



RECEIVED MAY 9 2000

NEW YORK STATE  
OFFICE OF TEMPORARY AND DISABILITY ASSISTANCE  
40 North Pearl Street, Albany, New York 12243-0001

George E. Pataki  
*Governor*

Brian J. Wing  
*Commissioner*

---

# Temporary and Disability Assistance Statistics

## December 1999

---

### Temporary Assistance

Temporary Assistance recipients totaled 865,249 in December 1999, decreasing 9,205 (-1.1%) from the previous month. Expenditures for Temporary Assistance increased \$1.7 million (+1.0%) over November, totaling \$174,974,829.

For the Calendar Year 1999, Temporary Assistance expenditures totaled \$2.2 billion with a monthly average recipient count of 934,461. Current year costs decreased \$455.6 million (-17.2%) from 1998, while the monthly average number of individuals decreased 141,674 (-13.2%) in CY 1999.

### Food Stamps

Individuals receiving Food Stamps benefits totaled 1,440,806 in December 1999, decreasing 9,375 (-0.6%) from the previous month. Total value of Food Stamps benefits was \$118,731,713 in December, increasing \$1.0 million (+0.9%) over November.

For the Calendar Year 1999, Food Stamps recipients averaged 1,511,197 per month, decreasing 132,623 (-8.1%) from the previous year's monthly average. Total expenditures for CY 1999 were \$1.4 billion, decreasing \$82.9 million (-5.4%) from the previous year.

### Supplemental Security Income

For the month of December 1999, SSI recipients (including Mental Hygiene) totaled 613,245 decreasing 2,922 (-0.5%) from the previous month. Expenditures for December totaled \$264,085,923, decreasing \$5.0 million (-1.8%) from November 1999.

Year-end totals for 1999 for the SSI Program were as follows: monthly average recipients: 613,741; total expenditures: \$3,195,496,827. These were increases of +0.7% for recipients and +2.7 for expenditures over CY 1998.

**Note: Annual 1999 tables are contained in this issue.**

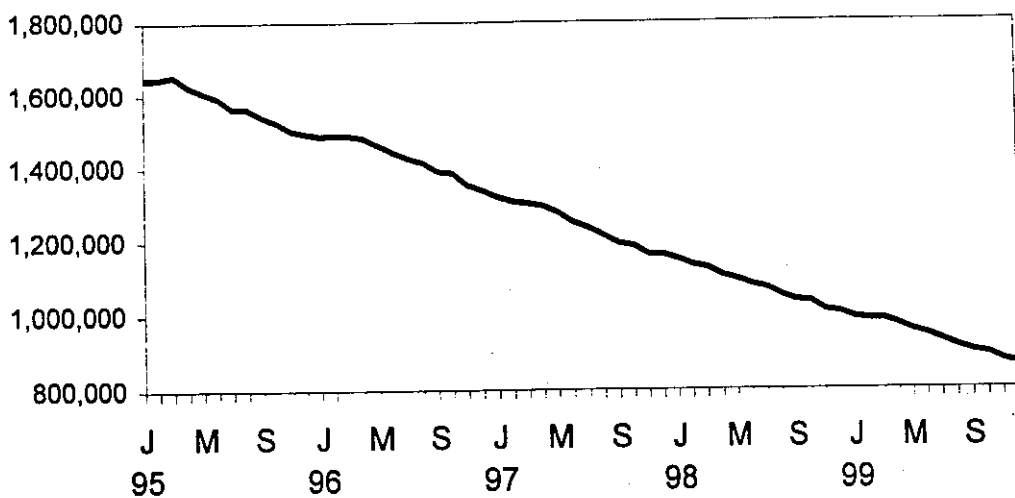
# Table of Contents

## Page Number

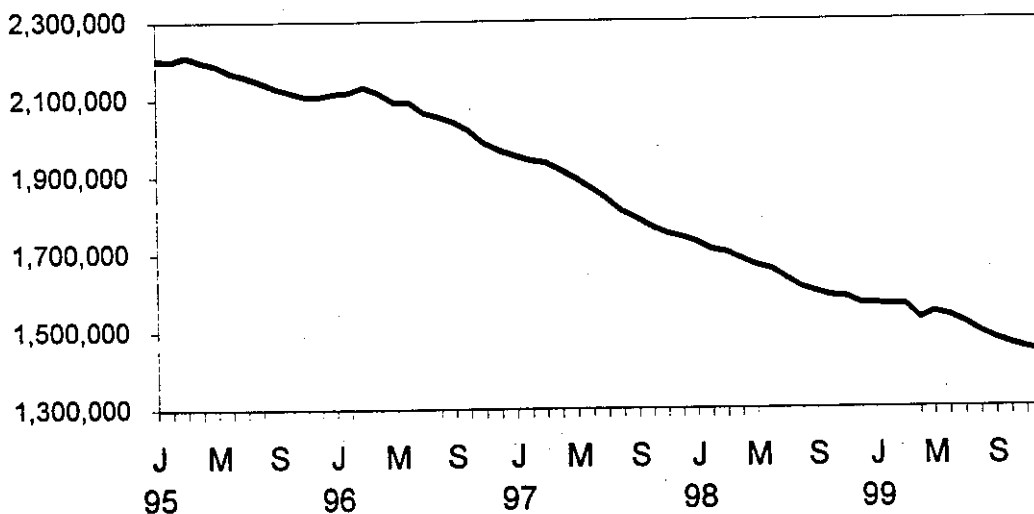
Graphs .....	4
Summary Tables .....	5
Temporary Assistance by Program Area .....	6
Temporary Assistance by Funding Source .....	10
Other Programs .....	18
1999 Summary .....	23

# NEW YORK STATE JANUARY 1995 - DECEMBER 1999

## TEMPORARY ASSISTANCE RECIPIENTS

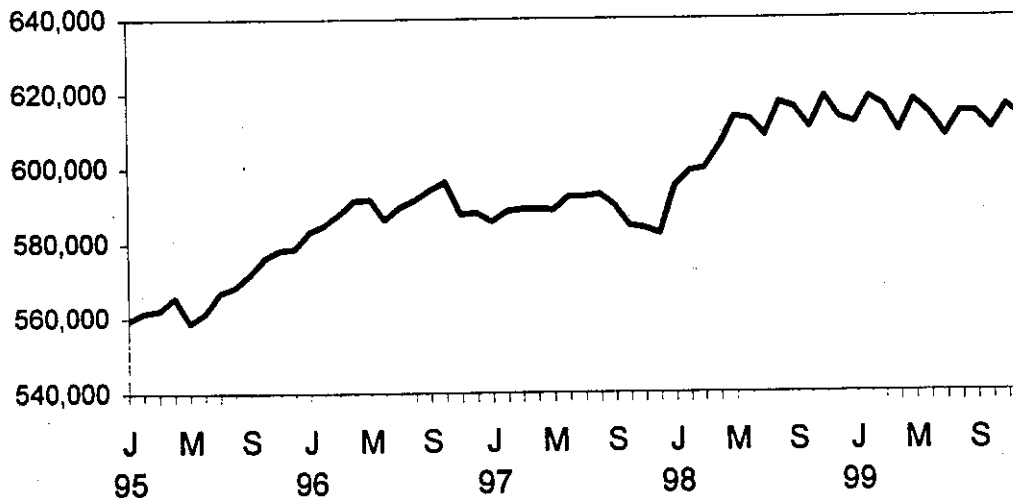


## FOOD STAMPS PERSONS



## SSI PERSONS

(INCLUDING MENTAL HYGIENE)



SELECTED SUMMARY PROGRAM DATA  
BY REGION

Table 1  
TEMPORARY AND DISABILITY ASSISTANCE CASES  
December 1999

Region	Cases				
	Temporary Assistance by Program			Supplemental Security Income	Food Stamps
	Total	Family Assistance	Safety Net Assistance		
New York State	394,737	270,151	124,586	602,092	712,205
New York City	286,199	194,246	91,953	387,254	470,930
Rest of State	108,538	75,905	32,633	214,838	241,275

Table 2  
TEMPORARY AND DISABILITY ASSISTANCE RECIPIENTS  
December 1999

Region	Recipients				
	Temporary Assistance by Program			Supplemental Security Income	Food Stamps
	Total	Family Assistance	Safety Net Assistance		
New York State	865,249	731,638	133,611	602,092	1,440,806
New York City	621,902	524,214	97,688	387,254	928,742
Rest of State	243,347	207,424	35,923	214,838	512,064

Table 3  
TEMPORARY AND DISABILITY ASSISTANCE EXPENDITURES  
December 1999

Region	Expenditures				
	Temporary Assistance by Program			Supplemental Security Income	Food Stamps
	Total	Family Assistance	Safety Net Assistance		
New York State	\$ 174,974,829	\$ 135,472,736	\$ 39,502,093	\$ 260,340,440	\$ 118,731,713
New York City	120,545,000	95,398,000	25,147,000	173,367,825	82,821,792
Rest of State	54,429,829	40,074,736	14,355,093	86,972,615	35,909,921

Note: NYC Temporary Assistance expenditures partially estimated.

Note: SSI data listed here do not include Mental Hygiene data. See Tables 17 - 19 for total SSI data.

Table 4  
**TEMPORARY ASSISTANCE**  
 Year to Year Monthly Comparison by Local District  
 Cases, Recipients and Expenditures  
 December 1999

Local District	December 1999			December 1998			December 1997		
	Cases	Recipients	Expenditures	Cases	Recipients	Expenditures	Cases	Recipients	Expenditures
New York State	394,737	865,249	\$ 174,974,829	451,115	1,005,246	\$ 202,373,323	528,392	1,163,962	\$ 243,652,811
New York City*	286,199	621,902	120,545,000	323,716	711,034	135,125,000	379,896	817,407	165,347,000
Rest of State	108,538	243,347	54,429,829	127,399	294,212	67,248,323	148,496	346,555	78,305,811
Albany	3,556	8,075	1,884,151	3,809	9,228	2,391,648	4,506	10,804	2,617,625
Allegany	644	1,546	242,247	808	1,933	318,411	1,021	2,503	420,569
Broome	2,461	5,714	1,109,793	2,840	6,837	1,399,537	3,488	8,198	1,661,636
Cattaraugus	731	1,580	281,588	903	2,119	349,437	1,110	2,569	454,974
Cayuga	449	986	187,801	535	1,222	222,557	673	1,545	288,873
Chautauqua	2,246	5,041	960,428	2,392	5,718	1,036,515	2,873	6,868	1,301,253
Chemung	947	2,255	361,179	1,185	2,754	435,987	1,515	3,603	642,806
Chenango	265	590	111,618	350	900	139,202	510	1,304	200,591
Clinton	561	1,085	215,221	696	1,449	257,134	1,000	2,107	383,425
Columbia	412	845	165,079	576	1,280	233,875	685	1,513	304,868
Cortland	419	967	211,833	503	1,271	248,620	627	1,616	326,946
Delaware	216	420	108,209	234	472	102,767	303	692	133,890
Dutchess	1,557	3,265	743,174	1,931	4,185	887,942	2,283	5,107	1,148,854
Erie	18,245	40,974	7,454,922	22,112	50,414	9,776,095	24,024	54,568	11,203,638
Essex	252	514	93,557	311	691	115,322	480	1,015	148,693
Franklin	361	699	132,659	551	1,125	186,934	630	1,828	318,434
Fulton	434	893	170,742	491	1,103	186,993	751	1,674	302,472
Genesee	290	655	138,643	302	729	151,251	367	852	161,027
Greene	401	846	161,279	490	1,110	206,639	623	1,415	281,072
Hamilton	12	15	6,288	26	51	8,114	29	46	12,046
Herkimer	388	872	144,496	427	1,015	164,139	481	1,151	208,581
Jefferson	1,279	2,769	590,319	1,624	3,571	736,522	1,936	4,364	877,322
Lewis	161	354	55,200	193	441	73,903	244	601	79,120
Livingston	496	1,016	216,171	631	1,252	262,317	649	1,318	271,796
Madison	186	343	84,237	209	418	83,775	270	571	126,226
Monroe	17,429	40,499	8,945,974	18,813	44,598	10,822,317	20,724	48,601	11,568,779
Montgomery	297	647	129,151	353	779	155,497	500	1,215	230,372
Nassau	5,527	11,362	3,164,925	6,542	13,790	3,348,861	7,813	16,656	4,244,228
Niagara	2,853	6,016	1,104,865	3,488	7,685	1,482,081	4,019	8,926	1,715,727
Oneida	2,863	7,203	1,235,792	3,571	8,951	1,658,817	3,780	9,627	1,721,064
Onondaga	6,123	14,339	2,644,835	7,660	18,621	3,923,627	9,219	22,843	4,725,123
Ontario	549	1,085	234,560	671	1,451	296,478	870	1,927	421,618
Orange	3,221	8,189	2,035,717	3,451	9,111	1,843,988	4,014	11,085	2,200,157
Orleans	469	1,081	242,255	473	1,048	211,708	546	1,225	258,451
Oswego	926	2,173	414,357	1,182	2,877	496,496	1,732	4,261	746,383
Otsego	120	218	77,060	198	392	80,320	251	567	109,607
Putnam	119	198	81,857	139	251	66,055	191	341	161,624
Rensselaer	1,287	2,899	583,905	1,446	3,423	644,296	1,883	4,468	881,383
Rockland	1,404	3,905	775,425	1,605	4,510	989,511	1,971	5,490	1,172,479
St. Lawrence	1,282	2,726	508,770	1,599	3,506	688,108	2,227	5,013	937,316
Saratoga	268	445	132,807	325	582	133,291	468	948	212,845
Schenectady	1,173	2,786	550,760	1,294	3,262	616,229	1,811	4,650	953,077
Schoharie	91	183	43,968	122	247	53,165	201	421	95,989
Schuyler	101	210	40,442	141	319	58,548	148	327	59,838
Seneca	170	357	72,004	187	421	79,549	240	563	104,578
Steuben	1,120	2,357	461,722	1,373	3,205	528,974	1,748	4,158	696,842
Suffolk	7,923	17,019	5,012,485	9,754	21,786	7,016,018	11,529	27,063	7,514,483
Sullivan	578	1,315	290,662	761	1,802	329,896	930	2,293	436,408
Tioga	346	768	134,966	397	945	164,746	567	1,298	233,761
Tompkins	733	1,443	360,182	731	1,497	337,762	861	1,771	402,597
Ulster	1,419	2,856	656,373	1,753	3,755	841,722	2,101	4,605	1,081,594
Warren	226	420	110,220	261	559	114,279	300	639	142,160
Washington	371	710	164,694	512	1,061	219,618	729	1,576	330,668
Wayne	581	1,272	248,919	766	1,709	325,208	1,031	2,432	473,635
Westchester	11,697	25,768	8,014,640	13,407	30,194	9,635,713	14,404	32,916	10,419,009
Wyoming	204	382	82,230	193	388	81,246	263	526	120,808
Yates	99	197	42,473	102	199	28,563	147	292	56,471

\* Expenditures partially estimated.

Note: Prior to January 1998, "Temporary Assistance" was known as "Public Assistance".

Table 5  
**TEMPORARY ASSISTANCE**  
 Cases, Recipients, Children, Adults and Expenditures by Local District  
 December 1999

Local District	Temporary Assistance				
	Cases	Recipients	Children	Adults	Expenditures
New York State	394,737	865,249	504,890	360,359	\$174,974,829
New York City*	286,199	621,902	355,943	265,959	120,545,000
Rest of State	108,538	243,347	148,947	94,400	54,429,829
Albany	3,556	8,075	4,945	3,130	1,884,151
Allegany	644	1,546	934	612	242,247
Broome	2,461	5,714	3,472	2,242	1,109,793
Cattaraugus	731	1,580	955	625	281,588
Cayuga	449	986	666	320	187,801
Chautauqua	2,246	5,041	3,080	1,961	960,428
Chemung	947	2,255	1,515	740	361,179
Chenango	265	590	372	218	111,618
Clinton	561	1,085	648	437	215,221
Columbia	412	845	524	321	165,079
Cortland	419	967	577	390	211,833
Delaware	216	420	254	166	108,209
Dutchess	1,557	3,265	2,116	1,149	743,174
Erie	18,245	40,974	24,224	16,750	7,454,922
Essex	252	514	290	224	93,557
Franklin	361	699	408	291	132,659
Fulton	434	893	523	370	170,742
Genesee	290	655	416	239	138,643
Greene	401	846	513	333	161,279
Hamilton	12	15	9	6	6,288
Herkimer	388	872	559	313	144,496
Jefferson	1,279	2,769	1,500	1,269	590,319
Lewis	161	354	201	153	55,200
Livingston	496	1,016	535	481	216,171
Madison	186	343	245	98	84,237
Monroe	17,429	40,499	24,729	15,770	8,945,974
Montgomery	297	647	402	245	129,151
Nassau	5,527	11,362	7,232	4,130	3,164,925
Niagara	2,853	6,016	3,665	2,351	1,104,865
Oneida	2,863	7,203	4,541	2,662	1,235,792
Onondaga	6,123	14,339	9,204	5,135	2,644,835
Ontario	549	1,085	624	461	234,560
Orange	3,221	8,189	5,518	2,671	2,035,717
Orleans	469	1,081	653	428	242,255
Oswego	926	2,173	1,416	757	414,357
Otsego	120	218	148	70	77,060
Putnam	119	198	118	80	81,857
Rensselaer	1,287	2,899	1,758	1,141	583,905
Rockland	1,404	3,905	2,572	1,333	775,425
St. Lawrence	1,282	2,726	1,577	1,149	508,770
Saratoga	268	445	331	114	132,807
Schenectady	1,173	2,786	1,917	869	550,760
Schoharie	91	183	112	71	43,968
Schuyler	101	210	131	79	40,442
Seneca	170	357	227	130	72,004
Steuben	1,120	2,357	1,364	993	461,722
Suffolk	7,923	17,019	10,624	6,395	5,012,485
Sullivan	578	1,315	877	438	290,662
Tioga	346	768	480	288	134,966
Tompkins	733	1,443	812	631	360,182
Ulster	1,419	2,856	1,796	1,060	656,373
Warren	226	420	246	174	110,220
Washington	371	710	419	291	164,694
Wayne	581	1,272	805	467	248,919
Westchester	11,697	25,768	14,845	10,923	8,014,640
Wyoming	204	382	199	183	82,230
Yates	99	197	124	73	42,473

\*Expenditures partially estimated.

Table 6  
**FAMILY ASSISTANCE**  
 Cases, Recipients, Children, Adults and Expenditures by Local District  
 December 1999

Local District	Family Assistance				
	Cases	Recipients	Children	Adults	Expenditures
New York State	270,151	731,638	499,663	231,975	\$135,472,736
New York City*	194,246	524,214	353,740	170,474	95,398,000
Rest of State	75,905	207,424	145,923	61,501	40,074,736
Albany	2,624	7,073	4,880	2,193	1,407,088
Allegany	495	1,394	930	464	191,849
Broome	1,807	4,990	3,423	1,567	828,449
Cattaraugus	536	1,358	933	425	223,429
Cayuga	354	880	654	226	149,397
Chautauqua	1,663	4,410	3,037	1,373	769,736
Chemung	760	2,049	1,491	558	296,873
Chenango	202	513	363	150	87,373
Clinton	384	886	628	258	145,205
Columbia	294	717	514	203	122,095
Cortland	329	873	577	296	168,810
Delaware	139	326	241	85	62,005
Dutchess	1,089	2,717	2,009	708	554,635
Erie	12,744	35,298	24,132	11,166	5,554,433
Essex	181	441	289	152	71,675
Franklin	238	565	398	167	90,665
Fulton	307	758	519	239	119,771
Genesee	202	562	408	154	98,656
Greene	301	742	505	237	124,478
Hamilton	7	10	9	1	2,216
Herkimer	290	771	554	217	114,305
Jefferson	878	2,314	1,462	852	437,778
Lewis	108	298	196	102	39,883
Livingston	329	836	524	312	151,057
Madison	145	296	240	56	64,614
Monroe	11,748	33,585	23,576	10,009	6,345,480
Montgomery	209	558	402	156	92,848
Nassau	3,802	9,473	7,062	2,411	2,350,920
Niagara	2,043	5,149	3,603	1,546	830,511
Oneida	2,116	6,393	4,496	1,897	951,138
Onondaga	4,553	12,654	9,083	3,571	2,052,506
Ontario	357	883	614	269	156,713
Orange	2,478	7,408	5,494	1,914	1,662,319
Orleans	354	962	648	314	184,544
Oswego	728	1,966	1,410	556	316,684
Otsego	80	172	141	31	55,822
Putnam	70	142	106	36	50,477
Rensselaer	955	2,560	1,751	809	411,878
Rockland	880	3,330	2,543	787	530,511
St. Lawrence	936	2,361	1,560	801	394,092
Saratoga	199	373	328	45	87,574
Schenectady	912	2,485	1,879	606	433,084
Schoharie	65	155	112	43	35,096
Schuyler	76	185	131	54	31,555
Seneca	126	303	217	86	52,875
Steuben	752	1,968	1,346	622	325,411
Suffolk	5,193	14,054	10,372	3,682	3,839,531
Sullivan	430	1,132	843	289	225,353
Tioga	292	712	471	241	112,841
Tompkins	470	1,160	791	369	239,273
Ulster	1,005	2,372	1,729	643	477,255
Warren	133	326	241	85	59,447
Washington	269	604	409	195	120,792
Wayne	418	1,096	797	299	183,602
Westchester	7,656	21,360	14,536	6,824	5,504,313
Wyoming	131	307	199	108	54,154
Yates	63	159	117	42	29,662

\*Expenditures partially estimated.

Table 7  
**SAFETY NET ASSISTANCE**  
 Cases, Recipients, Children, Adults and Expenditures by Local District  
 December 1999

Local District	Safety Net Assistance				
	Cases	Recipients	Children	Adults	Expenditures
New York State	124,586	133,611	5,227	128,384	\$39,502,093
New York City*	91,953	97,688	2,203	95,485	25,147,000
Rest of State	32,633	35,923	3,024	32,899	14,355,093
Albany	932	1,002	65	937	477,063
Allegany	149	152	4	148	50,398
Broome	654	724	49	675	281,344
Cattaraugus	195	222	22	200	58,159
Cayuga	95	106	12	94	38,404
Chautauqua	583	631	43	588	190,692
Chemung	187	206	24	182	64,306
Chenango	63	77	9	68	24,245
Clinton	177	199	20	179	70,016
Columbia	118	128	10	118	42,984
Cortland	90	94	0	94	43,023
Delaware	77	94	13	81	46,204
Dutchess	468	548	107	441	188,539
Erie	5,501	5,676	92	5,584	1,900,489
Essex	71	73	1	72	21,882
Franklin	123	134	10	124	41,994
Fulton	127	135	4	131	50,971
Genesee	88	93	8	85	39,987
Greene	100	104	8	96	36,801
Hamilton	5	5	0	5	4,072
Herkimer	98	101	5	96	30,191
Jefferson	401	455	38	417	152,541
Lewis	53	56	5	51	15,317
Livingston	167	180	11	169	65,114
Madison	41	47	5	42	19,623
Monroe	5,681	6,914	1,153	5,761	2,600,494
Montgomery	88	89	0	89	36,303
Nassau	1,725	1,889	170	1,719	814,005
Niagara	810	867	62	805	274,354
Oneida	747	810	45	765	284,654
Onondaga	1,570	1,685	121	1,564	592,329
Ontario	192	202	10	192	77,847
Orange	743	781	24	757	373,398
Orleans	115	119	5	114	57,711
Oswego	198	207	6	201	97,673
Otsego	40	46	7	39	21,238
Putnam	49	56	12	44	31,380
Rensselaer	332	339	7	332	172,027
Rockland	524	575	29	546	244,914
St. Lawrence	346	365	17	348	114,678
Saratoga	69	72	3	69	45,233
Schenectady	261	301	38	263	117,676
Schoharie	26	28	0	28	8,872
Schuyler	25	25	0	25	8,887
Seneca	44	54	10	44	19,129
Steuben	368	389	18	371	136,311
Suffolk	2,730	2,965	252	2,713	1,172,954
Sullivan	148	183	34	149	65,309
Tioga	54	56	9	47	22,125
Tompkins	263	283	21	262	120,909
Ulster	414	484	67	417	179,118
Warren	93	94	5	89	50,773
Washington	102	106	10	96	43,902
Wayne	163	176	8	168	65,317
Westchester	4,041	4,408	309	4,099	2,510,327
Wyoming	73	75	0	75	28,076
Yates	36	38	7	31	12,811

\*Expenditures partially estimated.



Table 8  
 TEMPORARY ASSISTANCE BY FUNDING SOURCE  
 Cases, Recipients and Expenditures by Local District  
 December 1999

Local District	Total			Federally Participating - TANF Family Assistance and Safety Net - FP			Federally Non-Participating Safety Net Assistance-FNP		
	Cases	Recipients	Expenditures	Cases	Recipients	Expenditures	Cases	Recipients	Expenditures
New York State	394,737	865,249	\$174,974,829	271,552	735,575	\$136,357,761	123,185	129,674	\$38,617,068
New York City*	286,199	621,902	120,545,000	194,397	524,740	95,470,000	91,802	97,162	25,075,000
Rest of State	108,538	243,347	54,429,829	77,155	210,835	40,887,761	31,383	32,512	13,542,068
Albany	3,556	8,075	1,884,151	2,663	7,164	1,434,750	893	911	449,401
Allegany	644	1,546	242,247	495	1,394	191,849	149	152	50,398
Broome	2,461	5,714	1,109,793	1,835	5,052	843,122	626	662	266,671
Cattaraugus	731	1,580	281,588	545	1,383	226,123	186	197	55,465
Cayuga	449	986	187,801	359	896	150,874	90	90	36,927
Chautauqua	2,246	5,041	960,428	1,683	4,456	778,888	563	585	181,540
Chemung	947	2,255	361,179	764	2,065	298,590	183	190	62,589
Chenango	265	590	111,618	204	524	87,921	61	66	23,697
Clinton	561	1,085	215,221	393	913	149,489	168	172	65,732
Columbia	412	845	165,079	298	729	124,279	114	116	40,800
Cortland	419	967	211,833	329	873	168,810	90	94	43,023
Delaware	216	420	108,209	145	345	64,332	71	75	43,877
Dutchess	1,557	3,265	743,174	1,120	2,801	569,224	437	464	173,950
Erie	18,245	40,974	7,454,922	12,754	35,331	5,560,650	5,491	5,643	1,894,272
Essex	252	514	93,557	182	442	72,136	70	72	21,421
Franklin	361	699	132,659	242	578	92,800	119	121	39,859
Fulton	434	893	170,742	310	764	121,106	124	129	49,636
Genesee	290	655	138,643	203	563	98,700	87	92	39,943
Greene	401	846	161,279	303	747	125,711	98	99	35,568
Hamilton	12	15	6,288	7	10	2,216	5	5	4,072
Herkimer	388	872	144,496	290	771	114,305	98	101	30,191
Jefferson	1,279	2,769	590,319	897	2,367	445,577	382	402	144,742
Lewis	161	354	55,200	110	303	40,304	51	51	14,896
Livingston	496	1,016	216,171	335	851	152,769	161	165	63,407
Madison	186	343	84,237	146	300	65,365	40	43	18,811
Monroe	17,429	40,499	8,945,974	12,312	35,181	6,747,976	5,117	5,318	2,197,998
Montgomery	297	647	129,151	209	558	92,848	88	89	36,303
Nassau	5,527	11,362	3,164,925	3,859	9,623	2,390,964	1,668	1,739	773,961
Niagara	2,853	6,016	1,104,865	2,083	5,231	843,284	770	785	261,581
Oneida	2,863	7,203	1,235,792	2,141	6,455	965,135	722	748	270,657
Onondaga	6,123	14,339	2,644,835	4,574	12,710	2,062,453	1,549	1,629	582,382
Ontario	549	1,085	234,560	362	897	162,116	187	188	72,444
Orange	3,221	8,189	2,035,717	2,485	7,429	1,670,545	736	760	365,172
Orleans	469	1,081	242,255	354	962	184,544	115	119	57,711
Oswego	926	2,173	414,357	730	1,971	318,724	196	202	95,633
Otsego	120	218	77,060	84	182	58,049	36	36	19,011
Putnam	119	198	81,857	71	145	50,965	48	53	30,892
Rensselaer	1,287	2,899	583,905	959	2,566	412,969	328	333	170,936
Rockland	1,404	3,905	775,425	901	3,380	545,092	503	525	230,333
St. Lawrence	1,282	2,726	508,770	944	2,377	398,381	338	349	110,389
Saratoga	268	445	132,807	201	377	88,065	67	68	44,742
Schenectady	1,173	2,786	550,760	929	2,530	446,320	244	256	104,440
Schoharie	91	183	43,968	66	156	35,441	25	27	8,527
Schuyler	101	210	40,442	76	185	31,555	25	25	8,887
Seneca	170	357	72,004	132	319	56,318	38	38	15,686
Steuben	1,120	2,357	461,722	759	1,988	328,968	361	369	132,754
Suffolk	7,923	17,019	5,012,485	5,281	14,283	3,905,150	2,642	2,736	1,107,335
Sullivan	578	1,315	290,662	444	1,173	233,848	134	142	56,814
Tioga	346	768	134,966	293	713	113,005	53	55	21,961
Tompkins	733	1,443	360,182	476	1,176	242,547	257	267	117,635
Ulster	1,419	2,856	656,373	1,054	2,485	504,888	365	371	151,485
Warren	226	420	110,220	135	328	60,706	91	92	49,514
Washington	371	710	164,694	269	604	120,792	102	106	43,902
Wayne	581	1,272	248,919	421	1,106	184,676	160	166	64,243
Westchester	11,697	25,768	8,014,640	7,745	21,657	5,567,731	3,952	4,111	2,446,909
Wyoming	204	382	82,230	131	307	54,154	73	75	28,076
Yates	99	197	42,473	63	159	29,662	36	38	12,811

\*Expenditures partially estimated.

Table 9  
 TEMPORARY ASSISTANCE TO NEEDY FAMILIES (TANF) - FP BY PROGRAM  
 Cases, Recipients, Children, Adults and Expenditures by Local District  
 December 1999

Local District	Family Assistance					Safety Net Assistance - FP				
	Cases	Recipients	Children	Adults	Expenditures	Cases	Recipients	Children	Adults	Expenditures
New York State	270,151	731,638	499,663	231,975	\$135,472,736	1,401	3,937	2,349	1,588	\$885,025
New York City*	194,246	524,214	353,740	170,474	95,398,000	151	526	288	238	72,000
Rest of State	75,905	207,424	145,923	61,501	40,074,736	1,250	3,411	2,061	1,350	813,025
Albany	2,624	7,073	4,880	2,193	1,407,088	39	91	50	41	27,662
Allegany	495	1,394	930	464	191,849	0	0	0	0	0
Broome	1,807	4,990	3,423	1,567	828,449	28	62	32	30	14,673
Cattaraugus	536	1,358	933	425	223,429	9	25	16	9	2,694
Cayuga	354	880	654	226	149,397	5	16	9	7	1,477
Chautauqua	1,663	4,410	3,037	1,373	769,736	20	46	30	16	9,152
Chemung	760	2,049	1,491	558	296,873	4	16	11	5	1,717
Chenango	202	513	363	150	87,373	2	11	6	5	548
Clinton	384	886	628	258	145,205	9	27	17	10	4,284
Columbia	294	717	514	203	122,095	4	12	6	6	2,184
Cortland	329	873	577	296	168,810	0	0	0	0	0
Delaware	139	326	241	85	62,005	6	19	13	6	2,327
Dutchess	1,089	2,717	2,009	708	554,635	31	84	54	30	14,589
Erie	12,744	35,298	24,132	11,166	5,554,433	10	33	20	13	6,217
Essex	181	441	289	152	71,675	1	1	0	1	461
Franklin	238	565	398	167	90,665	4	13	9	4	2,135
Fulton	307	758	519	239	119,771	3	6	3	3	1,335
Genesee	202	562	408	154	98,656	1	1	0	1	44
Greene	301	742	505	237	124,478	2	5	3	2	1,233
Hamilton	7	10	9	1	2,216	0	0	0	0	0
Herkimer	290	771	554	217	114,305	0	0	0	0	0
Jefferson	878	2,314	1,462	852	437,778	19	53	34	19	7,799
Lewis	108	298	196	102	39,883	2	5	3	2	421
Livingston	329	836	524	312	151,057	6	15	7	8	1,712
Madison	145	296	240	56	64,614	1	4	3	1	751
Monroe	11,748	33,585	23,576	10,009	6,345,480	564	1,596	986	610	402,496
Montgomery	209	558	402	156	92,848	0	0	0	0	0
Nassau	3,802	9,473	7,062	2,411	2,350,920	57	150	88	62	40,044
Niagara	2,043	5,149	3,603	1,546	830,511	40	82	44	38	12,773
Oneida	2,116	6,393	4,496	1,897	951,138	25	62	35	27	13,997
Onondaga	4,553	12,654	9,083	3,571	2,052,506	21	56	33	23	9,947
Ontario	357	883	614	269	156,713	5	14	8	6	5,403
Orange	2,478	7,408	5,494	1,914	1,662,319	7	21	13	8	8,226
Orleans	354	962	648	314	184,544	0	0	0	0	0
Oswego	728	1,966	1,410	556	316,684	2	5	3	2	2,040
Otsego	80	172	141	31	55,822	4	10	6	4	2,227
Putnam	70	142	106	36	50,477	1	3	2	1	488
Rensselaer	955	2,560	1,751	809	411,878	4	6	5	1	1,091
Rockland	880	3,330	2,543	787	530,511	21	50	28	22	14,581
St. Lawrence	936	2,361	1,560	801	394,092	8	16	6	10	4,289
Saratoga	199	373	328	45	87,574	2	4	2	2	491
Schenectady	912	2,485	1,879	606	433,084	17	45	28	17	13,236
Schoharie	65	155	112	43	35,096	1	1	0	1	345
Schuyler	76	185	131	54	31,555	0	0	0	0	0
Seneca	126	303	217	86	52,875	6	16	9	7	3,443
Steuben	752	1,968	1,346	622	325,411	7	20	14	6	3,557
Suffolk	5,193	14,054	10,372	3,682	3,839,531	88	229	137	92	65,619
Sullivan	430	1,132	843	289	225,353	14	41	29	12	8,495
Tioga	292	712	471	241	112,841	1	1	0	1	164
Tompkins	470	1,160	791	369	239,273	6	16	8	8	3,274
Ulster	1,005	2,372	1,729	643	477,255	49	113	59	54	27,633
Warren	133	326	241	85	59,447	2	2	0	2	1,259
Washington	269	604	409	195	120,792	0	0	0	0	0
Wayne	418	1,096	797	299	183,602	3	10	6	4	1,074
Westchester	7,656	21,360	14,536	6,824	5,504,313	89	297	186	111	63,418
Wyoming	131	307	199	108	54,154	0	0	0	0	0
Yates	63	159	117	42	29,662	0	0	0	0	0

\*Expenditures partially estimated.

Table 10  
SAFETY NET ASSISTANCE - FNP  
Cases, Recipients, Children, Adults and Expenditures by Local District  
December 1999

Local District	Safety Net Assistance - FNP				
	Cases	Recipients	Children	Adults	Expenditures
New York State	123,185	129,674	2,878	126,796	\$38,617,068
New York City*	91,802	97,162	1,915	95,247	25,075,000
Rest of State	31,383	32,512	963	31,549	13,542,068
Albany	893	911	15	896	449,401
Allegany	149	152	4	148	50,398
Broome	626	662	17	645	266,671
Cattaraugus	186	197	6	191	55,465
Cayuga	90	90	3	87	36,927
Chautauqua	563	585	13	572	181,540
Chemung	183	190	13	177	62,589
Chenango	61	66	3	63	23,697
Clinton	168	172	3	169	65,732
Columbia	114	116	4	112	40,800
Cortland	90	94	0	94	43,023
Delaware	71	75	0	75	43,877
Dutchess	437	464	53	411	173,950
Erie	5,491	5,643	72	5,571	1,894,272
Essex	70	72	1	71	21,421
Franklin	119	121	1	120	39,859
Fulton	124	129	1	128	49,636
Genesee	87	92	8	84	39,943
Greene	98	99	5	94	35,568
Hamilton	5	5	0	5	4,072
Herkimer	98	101	5	96	30,191
Jefferson	382	402	4	398	144,742
Lewis	51	51	2	49	14,896
Livingston	161	165	4	161	63,402
Madison	40	43	2	41	18,872
Monroe	5,117	5,318	167	5,151	2,197,998
Montgomery	88	89	0	89	36,303
Nassau	1,668	1,739	82	1,657	773,961
Niagara	770	785	18	767	261,581
Oneida	722	748	10	738	270,657
Onondaga	1,549	1,629	88	1,541	582,382
Ontario	187	188	2	186	72,444
Orange	736	760	11	749	365,172
Orleans	115	119	5	114	57,711
Oswego	196	202	3	199	95,633
Otsego	36	36	1	35	19,011
Putnam	48	53	10	43	30,892
Rensselaer	328	333	2	331	170,936
Rockland	503	525	1	524	230,333
St. Lawrence	338	349	11	338	110,389
Saratoga	67	68	1	67	44,742
Schenectady	244	256	10	246	104,440
Schoharie	25	27	0	27	8,527
Schuyler	25	25	0	25	8,887
Seneca	38	38	1	37	15,686
Steuben	361	369	4	365	132,754
Suffolk	2,642	2,736	115	2,621	1,107,335
Sullivan	134	142	5	137	56,814
Tioga	53	55	9	46	21,961
Tompkins	257	267	13	254	117,635
Ulster	365	371	8	363	151,485
Warren	91	92	5	87	49,514
Washington	102	106	10	96	43,902
Wayne	160	166	2	164	64,243
Westchester	3,952	4,111	123	3,988	2,446,909
Wyoming	73	75	0	75	28,076
Yates	36	38	7	31	12,811

\*Expenditures partially estimated.

Table 11  
**SAFETY NET ASSISTANCE - FNP BY CASE SIZE CATEGORY**  
 Cases, Recipients, Children, Adults and Expenditures by Local District  
 December 1999

Local District	One Person					Multi-Person				
	Cases	Recipients	Children	Adults	Expenditures	Cases	Recipients	Children	Adults	Expenditures
New York State	See Note	See Note	See Note	See Note	See Note	See Note	See Note	See Note	See Note	See Note
New York City*	See Note	See Note	See Note	See Note	See Note	See Note	See Note	See Note	See Note	See Note
Rest of State	30,424	30,424	461	29,963	\$13,054,809	959	2,088	502	1,586	\$487,259
Albany	876	876	6	870	443,464	17	35	9	26	5,937
Allegany	146	146	3	143	49,120	3	6	1	5	1,278
Broome	601	601	7	594	248,065	25	61	10	51	18,606
Cattaraugus	176	176	3	173	53,053	10	21	3	18	2,412
Cayuga	90	90	3	87	36,927	0	0	0	0	0
Chautauqua	543	543	5	538	173,791	20	42	8	34	7,749
Chemung	176	176	7	169	60,624	7	14	6	8	1,965
Chenango	57	57	1	56	22,447	4	9	2	7	1,250
Clinton	164	164	3	161	64,561	4	8	0	8	1,171
Columbia	112	112	2	110	39,895	2	4	2	2	905
Cortland	86	86	0	86	41,660	4	8	0	8	1,363
Delaware	67	67	0	67	42,815	4	8	0	8	1,062
Dutchess	416	416	31	385	164,178	21	48	22	26	9,772
Erie	5,354	5,354	28	5,326	1,835,125	137	289	44	245	59,147
Essex	68	68	1	67	21,283	2	4	0	4	138
Franklin	117	117	1	116	39,672	2	4	0	4	187
Fulton	119	119	1	118	47,835	5	10	0	10	1,801
Genesee	83	83	3	80	38,505	4	9	5	4	1,438
Greene	97	97	3	94	35,031	1	2	2	0	537
Hamilton	5	5	0	5	4,072	0	0	0	0	0
Herkimer	96	96	4	92	29,551	2	5	1	4	640
Jefferson	364	364	3	361	137,197	18	38	1	37	7,545
Lewis	51	51	2	49	14,896	0	0	0	0	0
Livingston	158	158	4	154	61,037	3	7	0	7	2,365
Madison	37	37	0	37	14,583	3	6	2	4	4,289
Monroe	4,957	4,957	55	4,902	2,124,962	160	361	112	249	73,036
Montgomery	87	87	0	87	35,523	1	2	0	2	780
Nassau	1,612	1,612	30	1,582	745,371	56	127	52	75	28,590
Niagara	756	756	12	744	257,090	14	29	6	23	4,491
Oneida	696	696	4	692	259,575	26	52	6	46	11,082
Onondaga	1,481	1,481	45	1,436	553,622	68	148	43	105	28,760
Ontario	186	186	1	185	72,215	1	2	1	1	229
Orange	717	717	1	716	356,497	19	43	10	33	8,675
Orleans	111	111	2	109	56,057	4	8	3	5	1,654
Oswego	190	190	0	190	91,952	6	12	3	9	3,681
Otsego	36	36	1	35	19,011	0	0	0	0	0
Putnam	44	44	5	39	28,879	4	9	5	4	2,013
Rensselaer	324	324	2	322	167,551	4	9	0	9	3,385
Rockland	482	482	1	481	209,734	21	43	0	43	20,599
St. Lawrence	329	329	6	323	107,082	9	20	5	15	3,307
Saratoga	66	66	1	65	44,396	1	2	0	2	346
Schenectady	238	238	4	234	100,630	6	18	6	12	3,810
Schoharie	23	23	0	23	7,802	2	4	0	4	725
Schuyler	25	25	0	25	8,887	0	0	0	0	0
Seneca	38	38	1	37	15,686	0	0	0	0	0
Stauben	354	354	3	351	131,058	7	15	1	14	1,696
Suffolk	2,566	2,566	70	2,496	1,077,165	76	170	45	125	30,170
Sullivan	127	127	1	126	54,900	7	15	4	11	1,914
Tioga	51	51	5	46	21,214	2	4	4	0	747
Tompkins	249	249	7	242	114,662	8	18	6	12	2,973
Ulster	360	360	3	357	149,167	5	11	5	6	2,318
Warren	90	90	5	85	49,234	1	2	0	2	280
Washington	98	98	5	93	42,422	4	8	5	3	1,480
Wayne	154	154	2	152	58,252	6	12	0	12	5,991
Westchester	3,813	3,813	65	3,748	2,335,694	139	298	58	240	111,215
Wyoming	71	71	0	71	27,329	2	4	0	4	747
Yates	34	34	3	31	11,803	2	4	4	0	1,008

\*Expenditures partially estimated.

Note: A breakout of One-Person and Multi-Person cases is not available for New York City.

Table 12  
SAFETY NET ASSISTANCE - FNP - CASH TOTAL  
Cases, Recipients, Children, Adults and Expenditures by Local District  
December 1999

Local District	Safety Net Assistance - FNP - Cash Total				
	Cases	Recipients	Children	Adults	Expenditures
New York State	117,947	124,349	2,803	121,546	\$36,000,265
New York City*	91,802	97,162	1,915	95,247	25,075,000
Rest of State	26,145	27,187	888	26,299	10,925,265
Albany	892	910	15	895	449,222
Allegany	135	138	4	134	45,302
Broome	456	490	17	473	174,544
Cattaraugus	178	188	6	182	53,963
Cayuga	79	79	3	76	30,147
Chautauqua	511	532	13	519	163,145
Chemung	160	167	13	154	51,630
Chenango	53	58	2	56	20,843
Clinton	137	141	3	138	53,294
Columbia	97	99	4	95	29,346
Cortland	90	94	0	94	43,023
Delaware	61	65	0	65	36,890
Dutchess	286	311	39	272	102,232
Erie	5,419	5,571	72	5,499	1,870,720
Essex	62	64	1	63	19,864
Franklin	96	98	1	97	32,878
Fulton	106	111	1	110	42,168
Genesee	75	79	7	72	29,939
Greene	81	81	0	81	27,984
Hamilton	5	5	0	5	4,072
Herkimer	90	92	4	88	25,199
Jefferson	298	316	3	313	108,981
Lewis	44	44	2	42	13,226
Livingston	142	146	4	142	53,675
Madison	35	38	2	36	15,049
Monroe	3,075	3,234	144	3,090	1,223,341
Montgomery	86	87	0	87	36,170
Nassau	1,418	1,487	82	1,405	618,185
Niagara	519	529	11	518	159,687
Oneida	534	560	9	551	173,070
Onondaga	1,461	1,538	86	1,452	546,798
Ontario	132	133	2	131	44,263
Orange	639	662	10	652	290,357
Orleans	115	119	5	114	57,711
Oswego	173	179	3	176	79,822
Otsego	24	24	1	23	9,107
Putnam	25	30	6	24	13,789
Rensselaer	261	266	2	264	135,129
Rockland	262	275	1	274	108,812
St. Lawrence	308	318	11	307	99,179
Saratoga	57	58	1	57	32,693
Schenectady	180	192	10	182	67,973
Schoharie	23	25	0	25	7,944
Schuyler	22	22	0	22	7,858
Seneca	30	30	1	29	9,803
Steuben	321	329	4	325	118,772
Suffolk	2,235	2,325	104	2,221	885,129
Sullivan	94	102	5	97	33,191
Tioga	46	48	9	39	15,732
Tompkins	184	194	12	182	79,084
Ulster	274	280	7	273	106,932
Warren	75	76	5	71	29,231
Washington	93	97	10	87	37,372
Wayne	119	125	2	123	41,122
Westchester	3,672	3,822	122	3,700	2,324,045
Wyoming	65	67	0	67	22,886
Yates	35	37	7	30	12,742

\*Expenditures partially estimated.

Note: New York City data for Safety Net Assistance - FNP - Non-Cash is currently included in Safety Net Assistance - FNP - Cash.

Table 13  
**SAFETY NET ASSISTANCE - FNP - CASH BY CASE SIZE CATEGORY**  
 Cases, Recipients, Children, Adults and Expenditures by Local District  
 December 1999

Local District	One-Person					Multi-Person				
	Cases	Recipients	Children	Adults	Expenditures	Cases	Recipients	Children	Adults	Expenditures
New York State	See Note	See Note	See Note	See Note	See Note	See Note	See Note	See Note	See Note	See Note
New York City*	See Note	See Note	See Note	See Note	See Note	See Note	See Note	See Note	See Note	See Note
Rest of State	25,258	25,258	422	24,836	\$10,481,411	887	1,929	466	1,463	\$443,854
Albany	875	875	6	869	443,285	17	35	9	26	5,937
Allegany	132	132	3	129	44,024	3	6	1	5	1,278
Broome	432	432	7	425	156,398	24	58	10	48	18,146
Cattaraugus	169	169	3	166	51,677	9	19	3	16	2,286
Cayuga	79	79	3	76	30,147	0	0	0	0	0
Chautauqua	492	492	5	487	155,492	19	40	8	32	7,653
Chemung	153	153	7	146	49,665	7	14	6	8	1,965
Chenango	49	49	0	49	19,593	4	9	2	7	1,250
Clinton	133	133	3	130	52,123	4	8	0	8	1,171
Columbia	95	95	2	93	28,441	2	4	2	2	905
Cortland	86	86	0	86	41,660	4	8	0	8	1,363
Delaware	57	57	0	57	35,828	4	8	0	8	1,062
Dutchess	267	267	21	246	93,578	19	44	18	26	8,654
Erie	5,282	5,282	28	5,254	1,811,573	137	289	44	245	59,147
Essex	60	60	1	59	19,726	2	4	0	4	138
Franklin	94	94	1	93	32,691	2	4	0	4	187
Fulton	101	101	1	100	40,367	5	10	0	10	1,801
Genesee	72	72	2	70	28,858	3	7	5	2	1,081
Greene	81	81	0	81	27,984	0	0	0	0	0
Hamilton	5	5	0	5	4,072	0	0	0	0	0
Herkimer	89	89	4	85	24,797	1	3	0	3	402
Jefferson	282	282	2	280	102,477	16	34	1	33	6,504
Lewis	44	44	2	42	13,226	0	0	0	0	0
Livingston	139	139	4	135	51,310	3	7	0	7	2,365
Madison	32	32	0	32	10,760	3	6	2	4	4,289
Monroe	2,948	2,948	54	2,894	1,165,787	127	286	90	196	57,554
Montgomery	85	85	0	85	35,390	1	2	0	2	780
Nassau	1,364	1,364	30	1,334	589,971	54	123	52	71	28,214
Niagara	509	509	8	501	155,926	10	20	3	17	3,761
Oneida	508	508	3	505	161,988	26	52	6	46	11,082
Onondaga	1,395	1,395	45	1,350	518,465	66	143	41	102	28,333
Ontario	131	131	1	130	44,034	1	2	1	1	229
Orange	621	621	0	621	282,110	18	41	10	31	8,247
Orleans	111	111	2	109	56,057	4	8	3	5	1,654
Oswego	167	167	0	167	76,141	6	12	3	9	3,681
Otsego	24	24	1	23	9,107	0	0	0	0	0
Putnam	21	21	1	20	11,776	4	9	5	4	2,013
Rensselaer	257	257	2	255	131,744	4	9	0	9	3,385
Rockland	249	249	1	248	103,588	13	26	0	26	5,224
St. Lawrence	300	300	6	294	96,086	8	18	5	13	3,093
Saratoga	56	56	1	55	32,347	1	2	0	2	346
Schenectady	174	174	4	170	64,163	6	18	6	12	3,810
Schoharie	21	21	0	21	7,219	2	4	0	4	725
Schuyler	22	22	0	22	7,858	0	0	0	0	0
Seneca	30	30	1	29	9,803	0	0	0	0	0
Steuben	314	314	3	311	117,076	7	15	1	14	1,696
Suffolk	2,163	2,163	61	2,102	858,568	72	162	43	119	26,561
Sullivan	87	87	1	86	31,277	7	15	4	11	1,914
Tioga	44	44	5	39	14,985	2	4	4	0	747
Tompkins	176	176	6	170	76,111	8	18	6	12	2,973
Ulster	269	269	2	267	104,614	5	11	5	6	2,318
Warren	74	74	5	69	28,951	1	2	0	2	280
Washington	89	89	5	84	35,892	4	8	5	3	1,480
Wayne	113	113	2	111	35,131	6	12	0	12	5,991
Westchester	3,540	3,540	64	3,476	2,215,621	132	282	58	224	108,424
Wyoming	63	63	0	63	22,139	2	4	0	4	747
Yates	33	33	3	30	11,734	2	4	4	0	1,008

\*Expenditures partially estimated.

Note: New York City data for Safety Net Assistance - FNP - Non-Cash is currently included in Safety Net Assistance - FNP - Cash. A breakout of One-Person and Multi-Person data is not available for New York City.

Table 14  
**SAFETY NET ASSISTANCE - FNP - NON-CASH TOTAL**  
 Cases, Recipients, Children, Adults and Expenditures by Local District  
 December 1999

Local District	Safety Net Assistance - FNP - Non-Cash Total				
	Cases	Recipients	Children	Adults	Expenditures
New York State	See Note	See Note	See Note	See Note	See Note
New York City*	See Note	See Note	See Note	See Note	See Note
Rest of State	5,238	5,325	75	5,250	\$2,616,803
Albany	1	1	0	1	179
Allegany	14	14	0	14	5,096
Broome	170	172	0	172	92,127
Cattaraugus	8	9	0	9	1,502
Cayuga	11	11	0	11	6,780
Chautauqua	52	53	0	53	18,395
Chemung	23	23	0	23	10,959
Chenango	8	8	1	7	2,854
Clinton	31	31	0	31	12,438
Columbia	17	17	0	17	11,454
Cortland	0	0	0	0	0
Delaware	10	10	0	10	6,987
Dutchess	151	153	14	139	71,718
Erie	72	72	0	72	23,552
Essex	8	8	0	8	1,557
Franklin	23	23	0	23	6,981
Fulton	18	18	0	18	7,468
Genesee	12	13	1	12	10,004
Greene	17	18	5	13	7,584
Hamilton	0	0	0	0	0
Herkimer	8	9	1	8	4,992
Jefferson	84	86	1	85	35,761
Lewis	7	7	0	7	1,670
Livingston	19	19	0	19	9,727
Madison	5	5	0	5	3,823
Monroe	2,042	2,084	23	2,061	974,657
Montgomery	2	2	0	2	133
Nassau	250	252	0	252	155,776
Niagara	251	256	7	249	101,894
Oneida	188	188	1	187	97,587
Onondaga	88	91	2	89	35,584
Ontario	55	55	0	55	28,181
Orange	97	98	1	97	74,815
Orleans	0	0	0	0	0
Oswego	23	23	0	23	15,811
Otsego	12	12	0	12	9,904
Putnam	23	23	4	19	17,103
Rensselaer	67	67	0	67	35,807
Rockland	241	250	0	250	121,521
St. Lawrence	30	31	0	31	11,210
Saratoga	10	10	0	10	12,049
Schenectady	64	64	0	64	36,467
Schoharie	2	2	0	2	583
Schuyler	3	3	0	3	1,029
Seneca	8	8	0	8	5,883
Steuben	40	40	0	40	13,982
Suffolk	407	411	11	400	222,206
Sullivan	40	40	0	40	23,623
Tioga	7	7	0	7	6,229
Tompkins	73	73	1	72	38,551
Ulster	91	91	1	90	44,553
Warren	16	16	0	16	20,283
Washington	9	9	0	9	6,530
Wayne	41	41	0	41	23,121
Westchester	280	289	1	288	122,864
Wyoming	8	8	0	8	5,190
Yates	1	1	0	1	69

\*Expenditures partially estimated.

Note: New York City data for Safety Net Assistance - FNP - Non-Cash is currently included in Safety Net Assistance - FNP - Cash.

Table 15  
SAFETY NET ASSISTANCE - FNP - NON-CASH BY CASE SIZE CATEGORY  
Cases, Recipients, Children, Adults and Expenditures by Local District

December 1999

Local District	One-Person					Multi-Person				
	Cases	Recipients	Children	Adults	Expenditures	Cases	Recipients	Children	Adults	Expenditures
New York State	See Note	See Note	See Note	See Note	See Note	See Note	See Note	See Note	See Note	See Note
New York City*	See Note	See Note	See Note	See Note	See Note	See Note	See Note	See Note	See Note	See Note
Rest of State	5,166	5,166	39	5,127	\$2,573,398	72	159	36	123	\$43,405
Albany	1	1	0	1	179	0	0	0	0	0
Allegany	14	14	0	14	5,096	0	0	0	0	0
Broome	169	169	0	169	91,667	1	3	0	3	460
Cattaraugus	7	7	0	7	1,376	1	2	0	2	126
Cayuga	11	11	0	11	6,780	0	0	0	0	0
Chautauqua	51	51	0	51	18,299	1	2	0	2	96
Chemung	23	23	0	23	10,959	0	0	0	0	0
Chenango	8	8	1	7	2,854	0	0	0	0	0
Clinton	31	31	0	31	12,438	0	0	0	0	0
Columbia	17	17	0	17	11,454	0	0	0	0	0
Cortland	0	0	0	0	0	0	0	0	0	0
Delaware	10	10	0	10	6,987	0	0	0	0	0
Dutchess	149	149	10	139	70,600	2	4	4	0	1,118
Erie	72	72	0	72	23,552	0	0	0	0	0
Essex	8	8	0	8	1,557	0	0	0	0	0
Franklin	23	23	0	23	6,981	0	0	0	0	0
Fulton	18	18	0	18	7,468	0	0	0	0	0
Genesee	11	11	1	10	9,647	1	2	0	2	357
Greene	16	16	3	13	7,047	1	2	2	0	537
Hamilton	0	0	0	0	0	0	0	0	0	0
Herkimer	7	7	0	7	4,754	1	2	1	1	238
Jefferson	82	82	1	81	34,720	2	4	0	4	1,041
Lewis	7	7	0	7	1,670	0	0	0	0	0
Livingston	19	19	0	19	9,727	0	0	0	0	0
Madison	5	5	0	5	3,823	0	0	0	0	0
Monroe	2,009	2,009	1	2,008	959,175	33	75	22	53	15,482
Montgomery	2	2	0	2	133	0	0	0	0	0
Nassau	248	248	0	248	155,400	2	4	0	4	376
Niagara	247	247	4	243	101,164	4	9	3	6	730
Oneida	188	188	1	187	97,587	0	0	0	0	0
Onondaga	86	86	0	86	35,157	2	5	2	3	427
Ontario	55	55	0	55	28,181	0	0	0	0	0
Orange	96	96	1	95	74,387	1	2	0	2	428
Orleans	0	0	0	0	0	0	0	0	0	0
Oswego	23	23	0	23	15,811	0	0	0	0	0
Otsego	12	12	0	12	9,904	0	0	0	0	0
Putnam	23	23	4	19	17,103	0	0	0	0	0
Rensselaer	67	67	0	67	35,807	0	0	0	0	0
Rockland	233	233	0	233	106,146	8	17	0	17	15,375
St. Lawrence	29	29	0	29	10,996	1	2	0	2	214
Saratoga	10	10	0	10	12,049	0	0	0	0	0
Schenectady	64	64	0	64	36,467	0	0	0	0	0
Schoharie	2	2	0	2	583	0	0	0	0	0
Schuyler	3	3	0	3	1,029	0	0	0	0	0
Seneca	8	8	0	8	5,883	0	0	0	0	0
Steuben	40	40	0	40	13,982	0	0	0	0	0
Suffolk	403	403	9	394	218,597	4	8	2	6	3,609
Sullivan	40	40	0	40	23,623	0	0	0	0	0
Tioga	7	7	0	7	6,229	0	0	0	0	0
Tompkins	73	73	1	72	38,551	0	0	0	0	0
Ulster	91	91	1	90	44,553	0	0	0	0	0
Warren	16	16	0	16	20,283	0	0	0	0	0
Washington	9	9	0	9	6,530	0	0	0	0	0
Wayne	41	41	0	41	23,121	0	0	0	0	0
Westchester	273	273	1	272	120,073	7	16	0	16	2,791
Wyoming	8	8	0	8	5,190	0	0	0	0	0
Yates	1	1	0	1	69	0	0	0	0	0

\*Expenditures partially estimated.

Note: New York City data for Safety Net Assistance - FNP - Non-Cash is currently included in Safety Net Assistance - FNP - Cash. A breakout of One-Person and Multi-Person data is not available for New York City.



Table 16

## FOOD STAMPS

Households, Persons and Value of Food Stamps Benefits by Local District  
December 1999

Local District	Total			Temporary Assistance			Non-Temporary Assistance		
	Households	Persons	Food Stamps Benefits	Households	Persons	Food Stamps Benefits	Households	Persons	Food Stamps Benefits
New York State	712,205	1,440,806	\$118,731,713	521,624	971,041	\$83,675,271	190,581	469,765	\$35,056,442
New York City	470,930	928,742	82,821,792	383,884	723,958	64,559,938	87,046	204,784	18,261,854
Rest of State	241,275	512,064	35,909,921	137,740	247,083	19,115,333	103,535	264,981	16,794,588
Albany	7,878	16,577	1,186,459	4,670	8,577	672,699	3,208	8,000	513,760
Allegany	1,866	4,023	256,734	970	1,731	123,459	896	2,292	133,275
Broome	5,784	11,981	795,468	3,264	5,852	434,893	2,520	6,129	360,575
Cattaraugus	2,786	5,678	350,635	1,193	1,773	129,703	1,593	3,905	220,932
Cayuga	1,917	4,220	283,938	740	1,092	81,820	1,177	3,128	202,118
Chautauqua	5,067	10,800	757,398	2,914	5,289	428,517	2,153	5,511	328,881
Chemung	2,479	5,421	351,164	1,302	2,253	166,860	1,177	3,168	184,304
Chenango	1,555	3,427	233,207	524	831	64,493	1,031	2,596	168,714
Clinton	2,750	5,372	357,074	1,286	1,712	124,430	1,464	3,660	232,644
Columbia	1,271	2,443	167,577	586	879	70,569	685	1,564	97,008
Cortland	1,293	2,851	200,149	615	1,002	75,481	678	1,849	124,668
Delaware	1,129	2,160	135,701	480	633	42,972	649	1,527	92,729
Dutchess	3,462	6,564	474,381	1,792	3,023	247,256	1,670	3,541	227,125
Erie	37,809	78,548	5,719,397	22,996	42,199	3,497,670	14,813	36,349	2,221,727
Essex	1,071	2,106	124,117	481	666	42,622	590	1,440	81,495
Franklin	1,556	3,083	205,951	691	918	65,903	865	2,165	140,048
Fulton	1,591	3,373	235,473	757	1,111	86,889	834	2,262	148,584
Genesee	1,138	2,352	150,904	540	856	64,602	598	1,496	86,302
Greene	1,174	2,375	163,747	573	926	74,985	601	1,449	88,762
Hamilton	144	212	10,635	22	23	1,315	122	189	9,320
Herkimer	1,705	3,648	236,268	707	1,078	77,709	998	2,570	158,559
Jefferson	3,417	7,655	514,904	1,718	2,881	218,235	1,699	4,774	296,669
Lewis	748	1,628	110,997	293	445	31,960	455	1,183	79,000
Livingston	1,403	2,732	187,890	670	1,088	89,074	733	1,644	98,000
Madison	1,360	2,745	181,178	540	655	43,191	820	2,090	137,987
Monroe	26,373	57,973	4,013,020	19,336	38,188	2,878,706	7,037	19,785	1,134,314
Montgomery	1,632	3,647	262,506	599	908	68,451	1,033	2,739	194,055
Nassau	10,078	18,717	1,342,264	6,508	10,968	845,466	3,570	7,749	496,798
Niagara	5,938	12,431	861,429	3,507	6,388	498,872	2,431	6,043	362,557
Oneida	8,923	19,472	1,365,810	4,263	7,603	587,716	4,660	11,869	778,094
Onondaga	12,153	27,810	1,961,350	7,125	14,460	1,076,898	5,028	13,350	884,452
Ontario	1,853	3,543	229,812	881	1,342	101,222	972	2,201	128,590
Orange	7,433	19,031	1,416,027	3,424	7,275	585,316	4,009	11,756	830,711
Orleans	1,155	2,592	179,429	581	1,051	88,247	574	1,541	91,182
Oswego	3,255	7,973	546,758	1,350	2,322	172,199	1,905	5,651	374,559
Otsego	1,128	2,109	134,501	428	496	34,348	700	1,613	100,153
Putnam	455	676	39,653	262	323	19,193	193	353	20,460
Rensselaer	3,626	7,654	538,911	1,742	2,904	217,869	1,884	4,750	321,042
Rockland	4,484	14,272	1,045,529	1,930	3,864	242,741	2,554	10,408	802,788
St. Lawrence	3,341	6,920	456,641	1,809	2,999	221,865	1,532	3,921	234,776
Saratoga	2,533	5,040	357,521	811	911	65,025	1,722	4,129	292,496
Schenectady	3,660	8,053	546,375	1,734	2,964	219,918	1,926	5,089	326,457
Schoharie	689	1,365	90,199	268	346	22,561	421	1,019	67,638
Schuyler	403	869	54,233	172	266	20,201	231	603	34,032
Seneca	824	1,583	95,088	313	439	28,411	511	1,144	66,677
Steuben	2,832	6,255	415,000	1,442	2,477	195,492	1,390	3,778	219,508
Suffolk	14,938	29,024	2,081,785	9,466	16,453	1,263,692	5,472	12,571	818,093
Sullivan	1,877	3,803	300,053	927	1,413	124,525	950	2,390	175,528
Tioga	950	2,202	142,588	453	747	57,259	497	1,455	85,327
Tompkins	1,868	3,754	251,897	959	1,535	109,707	909	2,219	142,190
Ulster	3,686	6,831	464,995	2,017	3,107	232,111	1,669	3,724	232,884
Warren	1,487	2,910	196,369	670	955	67,693	817	1,955	128,676
Washington	1,402	2,835	196,513	614	895	69,662	788	1,940	126,851
Wayne	2,039	3,859	258,376	985	1,532	119,514	1,054	2,327	138,860
Westchester	16,485	34,127	2,489,694	12,294	23,685	1,863,627	4,191	10,442	626,000
Wyoming	720	1,456	98,401	284	414	31,998	436	1,042	66,000
Yates	702	1,304	85,850	262	360	27,521	440	944	58,329

Note: Food Stamps households containing only SSI recipients are counted as TA in accordance with Federal reporting requirements.

Note: Rest of State data does not include the following FAP data: 114 households, 136 persons, and \$12,631 in expenditures.

Table 17  
**SUPPLEMENTAL SECURITY INCOME**  
 Recipients, Total Program Expenditures, Federal and State Shares, by Local District  
 December 1999

Local District	Recipients	Expenditures		
		Total	Federal	State
New York State*	613,245	\$264,085,923	\$217,473,158	\$46,612,765
New York City	387,254	173,367,825	146,305,679	27,062,146
Rest of State	214,838	86,972,615	68,780,274	18,192,341
Albany	6,312	2,597,727	2,022,526	575,201
Allegany	1,461	590,526	472,493	118,033
Broome	4,898	1,977,210	1,618,182	359,028
Cattaraugus	2,325	945,043	760,675	184,368
Cayuga	1,753	680,316	517,539	162,777
Chautauqua	3,889	1,578,738	1,267,014	311,724
Chemung	2,727	1,068,339	867,880	200,459
Chenango	1,283	495,458	413,490	81,968
Clinton	2,439	927,299	747,753	179,546
Columbia	1,521	593,244	445,170	148,074
Cortland	1,202	463,651	370,684	92,967
Delaware	1,151	430,883	335,867	95,016
Dutchess	4,279	1,810,772	1,357,028	453,744
Erie	25,014	10,699,400	8,698,544	2,000,856
Essex	915	361,545	263,519	98,026
Franklin	1,577	590,365	462,990	127,375
Fulton	1,629	599,001	468,907	130,094
Genesee	973	403,963	318,388	85,575
Greene	1,027	389,205	306,194	83,011
Hamilton	66	19,770	15,541	4,229
Herkimer	1,573	569,309	451,878	117,431
Jefferson	2,731	1,045,370	835,229	210,141
Lewis	620	231,155	186,803	44,352
Livingston	901	353,607	286,344	67,263
Madison	1,229	453,773	342,795	110,978
Monroe	16,727	7,108,456	5,760,600	1,347,856
Montgomery	1,305	467,237	367,793	99,444
Nassau	16,506	6,493,028	4,961,849	1,531,179
Niagara	4,787	2,000,707	1,598,764	401,943
Oneida	6,941	2,810,094	2,271,244	538,850
Onondaga	10,919	4,527,015	3,729,330	797,685
Ontario	1,463	625,995	498,029	127,966
Orange	5,909	2,335,528	1,877,023	458,505
Orleans	887	328,036	268,673	59,363
Oswego	2,829	1,092,583	906,368	186,215
Otsego	1,321	527,862	396,307	131,555
Putnam	713	284,099	202,302	81,797
Rensselaer	3,056	1,232,085	948,424	283,661
Rockland	4,229	1,737,904	1,259,139	478,765
St. Lawrence	3,617	1,435,292	1,180,134	255,158
Saratoga	2,406	874,869	683,385	191,484
Schenectady	3,483	1,418,935	1,134,731	284,204
Schoharie	707	263,373	187,459	75,914
Schuyler	497	191,873	148,438	43,435
Seneca	695	259,474	200,205	59,269
Steuben	2,777	1,092,947	897,811	195,136
Suffolk	20,727	8,511,695	6,439,080	2,072,615
Sullivan	2,550	1,029,310	739,541	289,769
Tioga	960	382,451	321,533	60,918
Tompkins	1,504	593,676	467,247	126,429
Ulster	3,949	1,570,861	1,230,852	340,009
Warren	1,389	523,919	418,324	105,595
Washington	1,365	494,893	387,255	107,638
Wayne	1,806	687,545	553,298	134,247
Westchester	14,235	5,780,846	4,584,044	1,196,802
Wyoming	617	249,235	202,236	46,999
Yates	467	165,123	125,423	39,700
Mental Hygiene	11,153	3,745,483	2,387,205	1,358,278

\* Only NYS includes Mental Hygiene

Table 18  
**SUPPLEMENTAL SECURITY INCOME**  
 SSI Recipients by Living Arrangement and Location  
 December 1999

Living Arrangement	New York State	New York City	Rest of State	Mental Hygiene
Living Alone	317,207	216,583	100,600	24
Living With Others	207,704	130,318	77,378	8
Living in Household of Another	24,638	15,542	9,094	2
Congregate Care Level I	6,505	657	554	5,294
Congregate Care Level II	35,676	13,889	21,291	496
Congregate Care Level III	297	87	210	0
Title XIX Institution	21,218	10,178	5,711	5,329
<b>Total</b>	<b>613,245</b>	<b>387,254</b>	<b>214,838</b>	<b>11,153</b>

Table 19  
**SUPPLEMENTAL SECURITY INCOME**  
 SSI Recipients by Living Arrangement and Category of Assistance  
 December 1999

Living Arrangement	Total	Category of Assistance		
		Aged	Blind	Disabled
Living Alone	317,207	101,770	1,771	213,666
Living With Others	207,704	17,832	1,160	188,712
Living in Household of Another	24,637	10,332	159	14,146
Congregate Care Level I	6,505	446	34	6,025
Congregate Care Level II	35,676	5,865	181	29,630
Congregate Care Level III	298	1	2	295
Title XIX Institution	21,218	3,856	127	17,235
<b>Total</b>	<b>613,245</b>	<b>140,102</b>	<b>3,434</b>	<b>469,709</b>

Table 20  
CHILD SUPPORT COLLECTIONS (IV-D)  
December 1999

Local District	Collections from Absent Parents		
	Total	TANF	Non-TANF
New York State	\$93,467,865	\$14,643,908	\$78,823,957
New York City	33,678,063	8,760,323	24,917,740
Rest of State	59,789,802	5,883,585	53,906,217
Albany	1,701,795	121,343	1,580,452
Allegany	394,138	68,193	325,945
Broome	1,109,433	76,767	1,032,666
Cattaraugus	677,498	62,903	614,595
Cayuga	613,932	35,178	578,754
Chautauqua	1,023,393	104,328	919,065
Chemung	747,049	44,703	702,346
Chenango	391,422	24,402	367,020
Clinton	606,157	31,497	574,660
Columbia	398,478	35,576	362,902
Cortland	359,027	19,986	339,041
Delaware	354,102	19,431	334,671
Dutchess	1,722,136	100,610	1,621,526
Erie	4,189,906	603,501	3,586,405
Essex	282,606	21,520	261,086
Franklin	418,832	19,771	399,061
Fulton	480,258	25,634	454,624
Genesee	390,212	26,206	364,006
Greene	355,019	24,341	330,678
Hamilton	39,100	1,581	37,519
Herkimer	507,736	27,324	480,412
Jefferson	894,087	82,475	811,612
Lewis	197,460	8,553	188,907
Livingston	494,566	35,039	459,527
Madison	401,243	15,615	385,628
Monroe	4,084,948	799,283	3,285,665
Montgomery	382,107	26,950	355,157
Nassau	4,851,699	387,109	4,464,590
Niagara	1,397,814	194,719	1,203,095
Oneida	1,120,046	144,559	975,487
Onondaga	2,964,900	302,340	2,662,560
Ontario	739,475	59,778	679,697
Orange	1,989,279	180,400	1,808,879
Orleans	279,340	26,258	253,082
Oswego	979,667	67,040	912,627
Otsego	362,667	12,325	350,342
Putnam	406,531	6,575	399,956
Rensselaer	1,068,185	86,083	982,102
Rockland	1,314,089	85,793	1,228,296
St. Lawrence	762,661	59,870	702,791
Saratoga	1,146,326	17,688	1,128,638
Schenectady	974,281	65,292	908,989
Schoharie	236,385	12,953	223,432
Schuyler	126,145	6,626	119,519
Seneca	288,404	12,729	275,675
Steuben	703,508	59,091	644,417
Suffolk	7,218,910	738,860	6,480,050
Sullivan	454,584	50,872	403,712
Tioga	349,335	23,670	325,665
Tompkins	456,159	31,605	424,554
Ulster	974,584	68,422	906,162
Warren	577,536	26,928	550,608
Washington	513,868	37,436	476,432
Wayne	655,784	27,318	628,466
Westchester	3,222,203	602,170	2,620,033
Wyoming	275,695	18,776	256,919
Yates	163,102	7,590	155,512

Note: Effective February 1999, collection amounts include collections made on behalf of other states.

# 1999 Summary

**The source for many of the Temporary Assistance statistics is the BICS payment system. This system was updated in July 1999 in response to welfare reform. As a result, the Temporary Assistance section of Temporary and Disability Statistics changed format in July 1999. The most noteworthy changes are improved identification of recipients as adults or children, and discontinuance of the separate PG-Interim reporting category. This 1999 Summary reflects the July 1999 changes and incorporates all PG-Interim data into the Safety Net-FNP Cash program.**

Table A-1

## Comparison of Monthly Average Cases and Recipients, and Annual Expenditures for 1999 and 1998

## 1999 SUMMARY

Program	1999	1998	Actual Change	Percent Change
<b>New York State</b>				(%)
<b>Temporary Assistance/Public Assistance</b>				
Cases	421,351	487,951	(66,600)	(13.65)
Recipients	934,461	1,076,135	(141,674)	(13.17)
Expenditures	\$ 2,195,545,518	\$ 2,651,154,279	(\$455,608,761)	(17.19)
<b>Food Stamps</b>				
Cases	739,643	796,391	(56,748)	(7.13)
Recipients	1,511,197	1,643,820	(132,623)	(8.07)
Expenditures	\$ 1,444,479,765	\$ 1,527,384,693	(\$82,904,928)	(5.43)
<b>Supplemental Security Income</b>				
Recipients	602,415	597,652	4,763	0.80
Expenditures	\$ 3,150,186,491	\$ 3,067,884,684	\$82,301,807	2.68
<b>New York City</b>				
<b>Temporary Assistance/Public Assistance</b>				
Cases	304,435	351,252	(46,817)	(13.33)
Recipients	668,231	759,662	(91,431)	(12.04)
Expenditures *	\$ 1,501,336,000	\$ 1,796,498,000	(\$295,162,000)	(16.43)
<b>Food Stamps</b>				
Cases	490,072	526,851	(36,779)	(6.98)
Recipients	978,323	1,058,745	(80,422)	(7.60)
Expenditures	\$ 1,000,779,732	\$ 1,048,628,624	(\$47,848,892)	(4.56)
<b>Supplemental Security Income</b>				
Recipients	385,452	380,066	5,386	1.42
Expenditures	\$ 2,088,377,422	\$ 2,022,085,845	\$66,291,577	3.28
<b>Rest of State</b>				
<b>Temporary Assistance/Public Assistance</b>				
Cases	116,916	136,699	(19,783)	(14.47)
Recipients	266,230	316,473	(50,243)	(15.88)
Expenditures	\$ 694,209,518	\$ 854,656,279	(\$160,446,761)	(18.77)
<b>Food Stamps</b>				
Cases	249,571	269,540	(19,969)	(7.41)
Recipients	532,874	585,075	(52,201)	(8.92)
Expenditures	\$ 443,700,033	\$ 478,756,069	(\$35,056,036)	(7.32)
<b>Supplemental Security Income</b>				
Recipients	216,963	217,586	(623)	(0.29)
Expenditures	\$ 1,061,809,069	\$ 1,045,798,839	\$16,010,230	1.53

\* Partially estimated.

Note: SSI data listed here do not include Mental Hygiene data. See Table A-10 for total SSI data.

Table A-2  
**TEMPORARY ASSISTANCE**  
 Year to Year Monthly Comparison by Local District  
 Monthly Average Cases and Recipients, and Annual Expenditures  
 1999 SUMMARY

Local District	1999			1998			Percentage Change		
	Cases	Recipients	Expenditures	Cases	Recipients	Expenditures	Cases (%)	Recipients (%)	Expenditures (%)
New York State	421,351	934,461	\$2,195,545,518	487,951	1,076,135	\$2,651,154,279	(13.65)	(13.17)	(17.19)
New York City*	304,435	668,231	1,501,336,000	351,252	759,662	1,796,498,000	(13.33)	(12.04)	(16.43)
Rest of State	116,916	266,230	694,209,518	136,699	316,473	854,656,279	(14.47)	(15.88)	(18.77)
Albany	3,643	8,536	23,253,838	4,110	9,824	30,449,216	(11.36)	(13.11)	(23.63)
Allegany	727	1,764	3,339,784	921	2,215	4,443,399	(21.06)	(20.36)	(24.84)
Broome	2,675	6,294	14,459,104	3,151	7,425	17,777,797	(15.11)	(15.23)	(18.67)
Cattaraugus	808	1,802	3,687,818	975	2,225	4,562,964	(17.13)	(19.01)	(19.18)
Cayuga	490	1,082	2,388,850	581	1,337	2,875,449	(15.66)	(19.07)	(16.92)
Chautauqua	2,297	5,313	11,134,451	2,574	6,092	13,657,441	(10.76)	(12.79)	(18.47)
Chemung	1,017	2,398	4,583,449	1,359	3,175	6,513,880	(25.17)	(24.47)	(29.64)
Chenango	308	748	1,496,276	414	1,034	1,959,323	(25.60)	(27.66)	(23.63)
Clinton	619	1,253	2,836,804	855	1,788	3,812,933	(27.60)	(29.92)	(25.60)
Columbia	482	1,025	2,273,679	649	1,429	3,137,519	(25.73)	(28.27)	(27.53)
Cortland	473	1,149	2,670,412	544	1,346	3,162,355	(13.05)	(14.64)	(15.56)
Delaware	218	426	1,056,193	252	536	1,252,182	(13.49)	(20.52)	(15.65)
Dutchess	1,729	3,651	9,557,053	2,116	4,629	12,448,137	(18.29)	(21.13)	(23.23)
Erie	20,068	45,623	98,142,754	23,063	52,316	118,183,201	(12.99)	(12.79)	(16.96)
Essex	273	585	1,247,157	394	845	1,737,883	(30.71)	(30.77)	(28.24)
Franklin	432	873	1,782,005	668	1,403	2,817,696	(35.33)	(37.78)	(36.76)
Fulton	454	980	2,025,724	621	1,395	2,883,608	(26.89)	(29.75)	(29.75)
Genesee	297	703	1,600,540	327	769	1,794,162	(9.17)	(8.58)	(10.79)
Greene	442	940	2,146,135	558	1,260	2,846,903	(20.79)	(25.40)	(24.62)
Hamilton	19	34	77,833	26	44	115,127	(26.92)	(22.73)	(32.39)
Herkimer	411	931	1,897,903	444	1,043	2,076,416	(7.43)	(10.74)	(8.60)
Jefferson	1,398	3,035	7,084,613	1,735	3,895	9,190,646	(19.42)	(22.08)	(22.91)
Lewis	182	392	732,343	200	454	868,468	(9.00)	(13.66)	(15.67)
Livingston	555	1,147	2,798,729	637	1,292	3,256,602	(12.87)	(11.22)	(14.06)
Madison	195	386	948,543	236	488	1,176,471	(17.37)	(20.90)	(19.37)
Monroe	18,218	42,708	114,533,964	19,659	46,273	138,113,172	(7.33)	(7.70)	(17.07)
Montgomery	329	713	1,642,582	405	931	2,033,895	(18.77)	(23.42)	(19.24)
Nassau	5,914	12,290	37,481,260	7,077	15,015	47,297,234	(16.43)	(18.15)	(20.75)
Niagara	3,149	6,853	15,047,176	3,711	8,160	18,713,564	(15.14)	(16.02)	(19.59)
Oneida	3,148	7,962	16,252,732	3,590	9,122	20,041,640	(12.31)	(12.72)	(18.91)
Onondaga	6,618	15,848	35,547,520	8,365	20,577	50,926,917	(20.88)	(22.98)	(30.20)
Ontario	616	1,299	3,149,734	772	1,699	4,045,050	(20.21)	(23.54)	(22.13)
Orange	3,212	8,520	21,220,331	3,595	9,702	23,259,596	(10.65)	(12.18)	(8.77)
Orleans	463	1,062	2,468,325	522	1,149	2,758,022	(11.30)	(7.57)	(10.50)
Oswego	1,044	2,494	5,245,397	1,370	3,283	6,742,313	(23.80)	(24.03)	(22.20)
Otsego	139	258	704,721	221	478	1,071,467	(37.10)	(46.03)	(34.23)
Putnam	130	228	1,042,372	161	296	1,162,439	(19.25)	(22.97)	(10.33)
Rensselaer	1,354	3,096	7,113,736	1,617	3,840	8,816,835	(16.26)	(19.38)	(19.32)
Rockland	1,486	4,162	10,153,582	1,775	4,992	12,766,164	(16.28)	(16.63)	(20.46)
St. Lawrence	1,426	3,065	6,319,716	1,858	4,100	8,650,245	(23.25)	(25.24)	(26.94)
Saratoga	278	475	1,445,724	388	748	2,014,557	(28.35)	(36.50)	(28.24)
Schenectady	1,261	3,072	6,959,899	1,511	3,812	8,958,391	(16.55)	(19.41)	(22.31)
Schoharie	114	229	655,426	171	350	886,424	(33.33)	(34.57)	(26.06)
Schuyler	133	278	643,003	151	330	703,162	(11.92)	(15.76)	(8.56)
Seneca	177	387	848,746	203	465	993,681	(12.81)	(16.77)	(14.59)
Steuben	1,232	2,735	5,574,312	1,571	3,670	7,355,551	(21.58)	(25.48)	(24.22)
Suffolk	8,760	19,017	65,526,082	10,506	24,071	83,504,732	(16.62)	(21.00)	(21.53)
Sullivan	628	1,467	3,260,066	830	1,992	4,293,781	(24.34)	(26.36)	(24.07)
Tioga	377	867	1,793,360	472	1,088	2,247,225	(20.13)	(20.31)	(20.20)
Tompkins	747	1,491	4,207,110	835	1,697	4,472,351	(10.54)	(12.14)	(5.93)
Ulster	1,563	3,247	8,756,579	1,899	4,124	11,516,292	(17.69)	(21.27)	(23.96)
Warren	239	505	1,255,216	292	627	1,553,264	(18.15)	(19.46)	(19.19)
Washington	443	884	2,267,408	618	1,335	3,200,780	(28.32)	(33.78)	(29.16)
Wayne	655	1,459	3,333,416	866	2,014	4,520,710	(24.36)	(27.56)	(26.26)
Westchester	12,556	27,924	105,119,375	13,939	31,592	117,497,272	(9.92)	(11.61)	(10.53)
Wyoming	192	363	937,308	215	438	977,631	(10.70)	(17.12)	(4.12)
Yates	103	202	481,350	124	244	562,134	(16.94)	(17.21)	(14.37)

\* Expenditures partially estimated.

Table A-3  
**FOOD STAMPS**  
 Year to Year Monthly Comparison by Local District  
 Monthly Average Households and Persons, and Annual Expenditures  
 1999 SUMMARY

Local District	1999			1998			Percentage Change		
	Cases	Recipients	Expenditures	Cases	Recipients	Expenditures	Cases (%)	Recipients (%)	Expenditures (%)
New York State	739,643	1,511,197	\$ 1,444,479,765	796,391	1,643,820	\$ 1,527,384,693	(7.13)	(8.07)	(5.43)
New York City	490,072	978,323	1,000,779,732	526,851	1,058,745	1,048,628,624	(6.98)	(7.60)	(4.56)
Rest of State	249,571	532,874	443,700,033	269,540	585,075	478,756,069	(7.41)	(8.92)	(7.32)
Albany	8,120	17,242	14,834,379	8,522	18,381	15,438,918	(4.72)	(6.20)	(3.92)
Allegany	1,911	4,179	3,143,375	2,096	4,641	3,505,961	(8.83)	(9.95)	(10.34)
Broome	6,065	12,698	10,144,643	6,649	13,926	10,956,686	(8.78)	(8.82)	(7.41)
Cattaraugus	2,879	5,952	4,468,660	3,084	6,536	4,909,206	(6.65)	(8.94)	(8.97)
Cayuga	1,970	4,302	3,431,487	2,107	4,765	3,682,648	(6.50)	(9.72)	(6.82)
Chautauqua	5,060	10,888	8,962,475	5,408	11,868	9,363,052	(6.43)	(8.26)	(4.28)
Chemung	2,516	5,530	4,220,679	2,853	6,383	4,841,499	(11.81)	(13.36)	(12.82)
Chenango	1,564	3,532	2,811,848	1,656	3,904	3,008,784	(5.56)	(9.53)	(6.55)
Clinton	2,809	5,552	4,426,515	3,032	6,189	5,025,407	(7.35)	(10.29)	(11.92)
Columbia	1,328	2,599	2,098,212	1,527	3,123	2,558,503	(13.03)	(16.78)	(17.99)
Cortland	1,357	2,997	2,461,752	1,424	3,200	2,609,185	(4.71)	(6.34)	(5.65)
Delaware	1,162	2,269	1,688,673	1,165	2,396	1,767,360	(0.26)	(5.30)	(4.45)
Dutchess	3,698	7,162	6,123,798	4,132	8,327	6,980,944	(10.50)	(13.99)	(12.26)
Erie	39,270	81,671	71,305,485	42,273	88,059	76,170,688	(7.10)	(7.25)	(6.39)
Essex	1,083	2,101	1,477,455	1,157	2,402	1,740,989	(6.40)	(12.53)	(15.14)
Franklin	1,615	3,286	2,579,037	1,869	3,929	3,153,176	(13.59)	(16.37)	(18.21)
Fulton	1,649	3,538	2,878,580	1,864	4,075	3,310,809	(11.53)	(13.18)	(13.06)
Genesee	1,160	2,483	1,933,729	1,206	2,604	2,007,189	(3.81)	(4.65)	(3.66)
Greene	1,203	2,454	2,017,592	1,306	2,808	2,281,050	(7.89)	(12.61)	(11.55)
Hamilton	142	218	140,981	157	257	167,504	(9.55)	(15.18)	(15.83)
Herkimer	1,757	3,833	2,963,939	1,809	4,062	3,114,113	(2.87)	(5.64)	(4.82)
Jefferson	3,532	7,995	6,360,978	3,774	8,772	6,964,136	(6.41)	(8.86)	(8.66)
Lewis	753	1,656	1,320,849	774	1,784	1,383,980	(2.71)	(7.17)	(4.56)
Livingston	1,489	2,914	2,396,244	1,575	3,189	2,528,761	(5.46)	(8.62)	(5.24)
Madison	1,341	2,757	2,133,096	1,447	3,061	2,410,713	(7.33)	(9.93)	(11.52)
Monroe	26,790	59,222	48,713,212	28,226	62,588	50,419,895	(5.09)	(5.38)	(3.38)
Montgomery	1,668	3,770	3,220,910	1,776	4,081	3,380,731	(6.08)	(7.62)	(4.73)
Nassau	10,477	19,630	16,712,308	11,135	21,537	17,992,626	(5.91)	(8.85)	(7.12)
Niagara	6,303	13,331	10,994,992	6,966	14,813	12,106,139	(9.52)	(10.00)	(9.18)
Oneida	9,174	20,168	16,702,383	9,740	21,722	17,897,549	(5.81)	(7.15)	(6.68)
Onondaga	12,798	29,160	24,484,975	14,526	33,709	28,462,610	(11.90)	(13.49)	(13.97)
Ontario	1,897	3,667	2,867,888	2,047	4,106	3,178,565	(7.33)	(10.69)	(9.77)
Orange	7,535	19,286	17,192,953	8,030	20,740	17,740,891	(6.16)	(7.01)	(3.09)
Orleans	1,176	2,660	2,137,271	1,207	2,683	2,091,853	(2.57)	(0.86)	2.17
Oswego	3,275	8,073	6,497,587	3,498	8,731	7,030,620	(6.38)	(7.54)	(7.58)
Otsego	1,180	2,271	1,727,623	1,322	2,650	1,995,668	(10.74)	(14.30)	(13.43)
Putnam	462	723	504,101	481	833	593,729	(3.95)	(13.21)	(15.10)
Rensselaer	3,885	8,248	6,974,108	4,482	9,774	8,151,578	(13.32)	(15.61)	(14.44)
Rockland	4,602	14,624	12,625,161	4,636	14,771	12,321,658	(0.73)	(1.00)	2.46
St. Lawrence	3,502	7,432	5,770,049	3,985	8,831	6,797,207	(12.12)	(15.84)	(15.11)
Saratoga	2,529	5,054	4,244,697	2,739	5,622	4,575,215	(7.67)	(10.10)	(7.22)
Schenectady	3,781	8,296	6,750,999	3,943	8,745	6,985,048	(4.11)	(5.13)	(3.35)
Schoharie	705	1,432	1,125,371	759	1,593	1,248,363	(7.11)	(10.11)	(9.85)
Schuyler	411	856	666,211	443	956	736,898	(7.22)	(10.46)	(9.59)
Seneca	805	1,537	1,095,634	805	1,564	1,090,766	0.00	(1.73)	0.45
Steuben	2,908	6,602	5,219,343	3,255	7,650	5,979,553	(10.66)	(13.70)	(12.71)
Suffolk	15,889	31,256	26,208,247	17,723	36,433	29,275,151	(10.35)	(14.21)	(10.48)
Sullivan	1,993	4,063	3,089,235	2,294	4,816	3,592,962	(13.12)	(15.64)	(14.02)
Tioga	1,003	2,354	1,833,664	1,160	2,761	2,091,835	(13.53)	(14.74)	(12.34)
Tompkins	1,907	3,838	3,086,338	2,013	4,100	3,300,615	(5.27)	(6.39)	(6.49)
Ulster	3,805	7,218	5,835,594	4,291	8,444	6,592,252	(11.33)	(14.52)	(11.48)
Warren	1,489	2,991	2,383,587	1,567	3,180	2,423,269	(4.98)	(5.94)	(1.64)
Washington	1,410	2,819	2,257,311	1,499	3,129	2,460,504	(5.94)	(9.91)	(8.26)
Wayne	2,123	4,082	3,236,643	2,263	4,480	3,513,610	(6.19)	(8.88)	(7.88)
Westchester	17,248	35,647	31,037,632	18,376	38,336	32,554,445	(6.14)	(7.01)	(4.66)
Wyoming	722	1,470	1,176,901	759	1,593	1,229,636	(4.87)	(7.72)	(4.29)
Yates	686	1,286	1,002,644	728	1,463	1,063,367	(5.77)	(12.10)	(5.71)



Table A-4  
**SUPPLEMENTAL SECURITY INCOME**  
 Year to Year Monthly Comparison by Local District  
 Monthly Average Recipients, and Annual Expenditures  
 1999 SUMMARY

Local District	1999		1998		Percentage Change	
	Recipients	Expenditures	Recipients	Expenditures	Recipients (%)	Expenditures (%)
New York State	613,741	\$ 3,195,486,827	609,197	\$ 3,112,325,501	0.75	2.67
New York City	385,452	2,088,377,422	380,066	2,022,085,845	1.42	3.28
Rest of State	216,963	1,061,799,069	217,586	1,045,798,839	(0.29)	1.53
Albany	6,407	31,893,525	6,335	31,234,426	1.14	2.11
Allegany	1,484	7,285,428	1,519	7,475,090	(2.30)	(2.54)
Broome	4,890	23,745,159	4,824	23,253,209	1.37	2.12
Cattaraugus	2,342	11,778,573	2,342	11,253,102	0.00	4.67
Cayuga	1,773	8,602,007	1,774	8,378,362	(0.06)	2.67
Chautauqua	3,929	19,179,422	4,033	19,444,795	(2.58)	(1.36)
Chemung	2,792	13,299,839	2,785	13,097,867	0.25	1.54
Chenango	1,281	5,747,246	1,288	5,592,926	(0.54)	2.76
Clinton	2,482	11,602,525	2,500	11,596,747	(0.72)	0.05
Columbia	1,528	7,341,135	1,506	7,057,355	1.46	4.02
Cortland	1,226	5,925,306	1,269	5,892,133	(3.39)	0.56
Delaware	1,165	5,239,267	1,181	5,180,837	(1.35)	1.13
Dutchess	4,305	21,361,194	4,323	20,818,983	(0.42)	2.60
Erie	25,404	130,301,949	25,637	128,803,375	(0.91)	1.16
Essex	908	4,181,454	906	4,049,024	0.22	3.27
Franklin	1,594	7,426,954	1,590	7,332,800	0.25	1.28
Fulton	1,694	7,445,181	1,728	7,563,779	(1.97)	(1.57)
Genesee	981	4,455,195	992	4,464,360	(1.11)	(0.21)
Greene	1,049	4,904,262	1,059	5,067,335	(0.94)	(3.22)
Hamilton	65	268,543	73	263,627	(10.96)	1.86
Herkimer	1,598	7,066,930	1,589	6,883,578	0.57	2.66
Jefferson	2,773	12,993,227	2,849	13,207,555	(2.67)	(1.62)
Lewis	639	2,924,144	632	2,771,752	1.11	5.50
Livingston	920	4,379,112	933	4,331,546	(1.39)	1.10
Madison	1,228	5,516,406	1,274	5,653,625	(3.61)	(2.43)
Monroe	16,936	86,971,062	17,021	86,898,268	(0.50)	0.08
Montgomery	1,344	5,827,075	1,371	5,846,575	(1.97)	(0.33)
Nassau	16,570	79,120,884	16,537	77,489,908	0.20	2.10
Niagara	4,865	23,807,503	4,923	23,636,644	(1.18)	0.72
Oneida	7,048	34,655,182	7,099	34,024,551	(0.72)	1.85
Onondaga	10,894	55,247,908	10,575	52,193,575	3.02	5.85
Ontario	1,480	7,112,202	1,460	6,922,059	1.37	2.75
Orange	5,969	28,720,406	6,005	28,705,018	(0.60)	0.05
Orleans	902	4,063,706	897	4,043,801	0.56	0.49
Oswego	2,816	13,339,337	2,779	13,069,505	1.33	2.06
Otsego	1,345	6,186,554	1,348	5,895,441	(0.22)	4.94
Putnam	723	3,531,750	735	3,534,960	(1.63)	(0.09)
Rensselaer	3,086	14,963,998	3,124	14,702,219	(1.22)	1.78
Rockland	4,252	21,350,076	4,286	21,064,378	(0.79)	1.36
St. Lawrence	3,681	17,439,836	3,730	17,587,341	(1.31)	(0.84)
Saratoga	2,433	10,875,700	2,380	10,455,593	2.23	4.02
Schenectady	3,502	17,336,927	3,509	16,910,312	(0.20)	2.52
Schoharie	718	3,200,849	718	3,149,115	0.00	1.64
Schuyler	497	2,305,503	482	2,282,255	3.11	1.02
Seneca	709	3,300,216	688	3,158,755	3.05	4.48
Steuben	2,804	13,748,039	2,829	13,610,900	(0.88)	1.01
Suffolk	20,914	102,670,748	20,953	101,396,957	(0.19)	1.26
Sullivan	2,551	12,554,793	2,580	12,426,179	(1.51)	1.04
Tioga	988	4,665,808	1,024	4,921,630	(3.52)	(5.20)
Tompkins	1,516	7,335,657	1,522	7,232,016	(0.39)	1.43
Ulster	3,990	19,642,393	4,038	19,296,945	(1.19)	1.79
Warren	1,418	6,419,330	1,405	6,193,226	0.93	3.65
Washington	1,348	6,281,540	1,352	6,139,004	(0.30)	2.32
Wayne	1,840	8,734,437	1,817	8,618,648	1.27	1.34
Westchester	14,258	70,402,175	14,316	68,604,657	(0.41)	2.62
Wyoming	625	2,925,114	636	2,864,285	(1.73)	2.12
Yates	484	2,198,378	496	2,255,931	(2.42)	(2.55)
Mental Hygiene	11,326	45,310,336	11,545	44,440,817	(1.90)	1.96

Note: Only New York State includes Mental Hygiene.

Table A-5  
**TEMPORARY ASSISTANCE**  
 Monthly Average Cases, Recipients, Children and Adults, and Annual Expenditures  
 by Local District  
 1999 SUMMARY

Local District	Temporary Assistance				Total Expenditures
	Monthly Average				
	Cases	Recipients	Children	Adults	
New York State	421,351	934,461	537,206	397,255	\$ 2,195,545,518
New York City*	304,435	668,231	374,745	293,486	1,501,336,000
Rest of State	116,916	266,230	162,461	103,769	694,209,518
Albany	3,643	8,536	5,283	3,253	23,253,838
Allegany	727	1,764	1,042	722	3,339,784
Broome	2,675	6,294	3,802	2,492	14,459,104
Cattaraugus	808	1,802	1,088	714	3,687,818
Cayuga	490	1,082	701	381	2,388,850
Chautauqua	2,297	5,313	3,289	2,024	11,134,451
Chemung	1,017	2,398	1,595	803	4,583,449
Chenango	308	748	479	269	1,496,276
Clinton	619	1,253	756	497	2,836,804
Columbia	482	1,025	618	407	2,273,679
Cortland	473	1,149	690	459	2,670,412
Delaware	218	426	265	161	1,056,193
Dutchess	1,729	3,651	2,293	1,358	9,557,053
Erie	20,068	45,623	26,816	18,807	98,142,754
Essex	273	585	330	255	1,247,157
Franklin	432	873	507	366	1,782,005
Fulton	454	980	587	393	2,025,724
Genesee	297	703	452	251	1,600,540
Greene	442	940	565	375	2,146,135
Hamilton	19	34	20	14	77,833
Herkimer	411	931	585	346	1,897,903
Jefferson	1,398	3,035	1,651	1,384	7,084,613
Lewis	182	392	221	171	732,343
Livingston	555	1,147	607	540	2,798,729
Madison	195	386	272	114	948,543
Monroe	18,218	42,708	26,087	16,621	114,533,964
Montgomery	329	713	433	280	1,642,582
Nassau	5,914	12,290	7,798	4,492	37,481,260
Niagara	3,149	6,853	4,172	2,681	15,047,176
Oneida	3,148	7,962	5,012	2,950	16,252,732
Onondaga	6,618	15,848	10,120	5,728	35,547,520
Ontario	616	1,299	761	538	3,149,734
Orange	3,212	8,520	5,702	2,818	21,220,331
Orleans	463	1,062	639	423	2,468,325
Oswego	1,044	2,494	1,605	889	5,245,397
Otsego	139	258	169	89	704,721
Putnam	130	228	131	97	1,042,372
Rensselaer	1,354	3,096	1,869	1,227	7,113,736
Rockland	1,486	4,162	2,857	1,305	10,153,582
St. Lawrence	1,426	3,065	1,757	1,308	6,319,716
Saratoga	278	475	347	128	1,445,724
Schenectady	1,261	3,072	2,094	978	6,959,899
Schoharie	114	229	139	90	655,426
Schuyler	133	278	163	115	643,003
Seneca	177	387	248	139	848,746
Steuben	1,232	2,735	1,566	1,169	5,574,312
Suffolk	8,760	19,017	11,795	7,222	65,526,082
Sullivan	628	1,467	973	494	3,260,066
Tioga	377	867	542	325	1,793,360
Tompkins	747	1,491	828	663	4,207,110
Ulster	1,563	3,247	2,041	1,206	8,756,579
Warren	239	505	299	206	1,255,216
Washington	443	884	514	370	2,267,408
Wayne	655	1,459	923	536	3,333,416
Westchester	12,556	27,924	16,052	11,872	105,119,375
Wyoming	192	363	190	173	937,308
Yates	103	202	121	81	481,350

\* Expenditures partially estimated.

Table A-6  
**FAMILY ASSISTANCE**  
 Monthly Average Cases, Recipients, Children and Adults, and Annual Expenditures  
 by Local District  
 1999 SUMMARY

Local District	Family Assistance				Total Expenditures
	Monthly Average				
	Cases	Recipients	Children	Adults	
New York State	284,985	784,265	529,345	254,920	\$1,686,546,273
New York City*	202,718	555,993	369,408	186,585	1,169,362,000
Rest of State	82,267	228,272	159,937	68,335	517,184,273
Albany	2,724	7,556	5,229	2,327	17,595,619
Allegany	557	1,587	1,040	547	2,719,759
Broome	1,971	5,520	3,765	1,755	11,055,149
Cattaraugus	603	1,577	1,074	503	2,881,205
Cayuga	384	966	690	276	1,873,141
Chautauqua	1,729	4,690	3,247	1,443	8,969,680
Chemung	815	2,176	1,577	599	3,732,535
Chenango	246	667	465	202	1,224,899
Clinton	444	1,060	740	320	2,049,820
Columbia	340	870	611	259	1,719,018
Cortland	364	1,036	689	347	2,101,262
Delaware	150	343	253	90	724,613
Dutchess	1,236	3,091	2,227	864	7,147,777
Erie	13,913	39,231	26,731	12,500	72,430,199
Essex	193	502	329	173	947,297
Franklin	298	724	496	228	1,296,474
Fulton	320	839	582	257	1,476,123
Genesee	215	616	447	169	1,188,382
Greene	329	820	558	262	1,680,030
Hamilton	14	29	20	9	55,082
Herkimer	312	829	582	247	1,531,449
Jefferson	974	2,568	1,619	949	5,227,778
Lewis	122	326	217	109	518,343
Livingston	375	953	599	354	2,007,878
Madison	155	343	269	74	746,117
Monroe	12,486	35,833	25,091	10,742	84,523,403
Montgomery	227	609	432	177	1,141,935
Nassau	4,108	10,323	7,662	2,661	27,667,711
Niagara	2,275	5,892	4,093	1,799	11,413,172
Oneida	2,326	7,050	4,959	2,091	12,599,225
Onondaga	4,954	14,071	10,045	4,026	28,017,602
Ontario	408	1,074	746	328	2,100,989
Orange	2,439	7,715	5,688	2,027	16,682,007
Orleans	340	935	636	299	1,919,751
Oswego	821	2,260	1,598	662	4,289,197
Otsego	97	211	164	47	489,372
Putnam	78	169	124	45	669,601
Rensselaer	998	2,728	1,861	867	5,281,202
Rockland	1,004	3,644	2,840	804	7,395,329
St. Lawrence	1,050	2,663	1,739	924	4,915,338
Saratoga	204	395	341	54	1,002,715
Schenectady	998	2,787	2,076	711	5,634,283
Schoharie	82	196	139	57	492,070
Schuyler	97	240	162	78	464,278
Seneca	132	329	236	93	642,986
Steuben	865	2,345	1,551	794	4,152,454
Suffolk	5,779	15,807	11,616	4,191	50,631,900
Sullivan	472	1,290	955	335	2,522,326
Tioga	310	795	537	258	1,467,933
Tompkins	487	1,215	816	399	2,840,129
Ulster	1,133	2,761	1,981	780	6,673,439
Warren	159	418	293	125	846,415
Washington	323	758	507	251	1,667,780
Wayne	475	1,269	917	352	2,493,550
Westchester	8,166	23,112	15,767	7,345	72,651,810
Wyoming	125	295	190	105	657,296
Yates	66	164	119	45	337,436

\* Expenditures partially estimated.

Note: Due to the inability to distinguish New York City federally-participating Safety Net cases from New York City Family Assistance cases until September 1999, Table A-6 includes data on New York City federally-participating Safety Net cases for January through August 1999.

Table A-7  
**SAFETY NET ASSISTANCE (includes PG-INTERIM)**  
 Monthly Average Cases, Recipients, Children and Adults, and Annual Expenditures  
 by Local District  
 1999 SUMMARY

Local District	Safety Net Assistance (includes PG-Interim)				Total Expenditures
	Monthly Average				
	Cases	Recipients	Children	Adults	
New York State	136,366	150,196	7,861	142,335	\$508,999,245
New York City*	101,717	112,238	5,337	106,901	331,974,000
Rest of State	34,649	37,958	2,524	35,434	177,025,245
Albany	919	980	54	926	5,658,219
Allegany	170	177	2	175	620,025
Broome	704	774	37	737	3,403,955
Cattaraugus	205	225	14	211	806,613
Cayuga	106	116	11	105	515,709
Chautauqua	568	623	42	581	2,164,771
Chemung	202	222	18	204	850,914
Chenango	62	81	14	67	271,377
Clinton	175	193	16	177	786,984
Columbia	142	155	7	148	554,661
Cortland	109	113	1	112	569,150
Delaware	68	83	12	71	331,580
Dutchess	493	560	66	494	2,409,276
Erie	6,155	6,392	85	6,307	25,712,555
Essex	80	83	1	82	299,860
Franklin	134	149	11	138	485,531
Fulton	134	141	5	136	549,601
Genesee	82	87	5	82	412,158
Greene	113	120	7	113	466,105
Hamilton	5	5	0	5	22,751
Herkimer	99	102	3	99	366,454
Jefferson	424	467	32	435	1,856,835
Lewis	80	86	4	82	214,000
Livingston	180	194	8	186	790,851
Madison	40	43	3	40	202,426
Monroe	5,732	6,875	996	5,879	30,010,561
Montgomery	102	104	1	103	500,647
Nassau	1,806	1,967	136	1,831	9,813,549
Niagara	874	961	79	882	3,634,004
Oneida	822	912	53	859	3,653,507
Onondaga	1,664	1,777	75	1,702	7,529,918
Ontario	208	225	15	210	1,048,745
Orange	773	805	14	791	4,538,324
Orleans	123	127	3	124	548,574
Oswego	223	234	7	227	956,200
Otsego	42	47	5	42	215,349
Putnam	52	59	7	52	372,771
Rensselaer	356	368	8	360	1,832,534
Rockland	482	518	17	501	2,758,253
St. Lawrence	376	402	18	384	1,404,378
Saratoga	74	80	6	74	443,009
Schenectady	283	285	18	287	1,325,606
Schoharie	32	33	0	33	163,356
Schuyler	36	38	1	37	178,725
Seneca	45	58	12	46	205,760
Steuben	367	390	15	375	1,421,858
Suffolk	2,981	3,210	179	3,031	14,894,182
Sullivan	156	177	18	159	737,740
Tioga	67	72	5	67	325,427
Tompkins	260	276	12	264	1,366,981
Ulster	430	486	60	426	2,083,140
Warren	80	87	6	81	408,801
Washington	120	126	7	119	599,628
Wayne	180	190	6	184	838,868
Westchester	4,390	4,812	285	4,527	32,467,565
Wyoming	67	68	0	68	280,012
Yates	37	38	2	36	143,914

\* Expenditures partially estimated.

Note: Due to the inability to distinguish New York City federally-participating Safety Net cases from New York City Family Assistance cases until September 1999, Table A-7 does not include data on New York City federally-participating Safety Net cases until September 1999.

Table A-8  
**TEMPORARY ASSISTANCE BY FUNDING SOURCE**  
 Monthly Average Cases and Recipients, and Annual Expenditures  
 1999 SUMMARY

Local District	Total			Federally Participating - TANF Family Assistance and Safety Net - FP			Federally Non-Participating Safety Net Assistance-FNP and PG-Interim		
	Cases	Recipients	Expenditures	Cases	Recipients	Expenditures	Cases	Recipients	Expenditures
New York State	421,351	934,461	\$2,195,545,518	286,178	787,618	\$1,695,761,003	135,173	146,843	\$499,784,515
New York City*	304,435	668,231	1,501,336,000	202,764	556,158	1,169,690,000	101,671	112,073	331,646,000
Rest of State	116,916	266,230	694,209,518	83,414	231,460	526,071,003	33,502	34,770	168,138,515
Albany	3,643	8,536	23,253,838	2,755	7,634	17,816,233	888	902	5,437,605
Allegany	727	1,764	3,339,784	557	1,588	2,720,740	170	176	619,044
Broome	2,675	6,294	14,459,104	1,994	5,572	11,185,282	681	722	3,273,822
Cattaraugus	808	1,802	3,687,818	607	1,590	2,896,069	201	212	791,749
Cayuga	490	1,082	2,388,850	390	981	1,902,533	100	101	486,317
Chautauqua	2,297	5,313	11,134,451	1,750	4,744	9,078,726	547	569	2,055,725
Chemung	1,017	2,398	4,583,449	821	2,196	3,760,160	196	202	823,289
Chenango	308	748	1,496,276	252	689	1,256,732	56	59	239,544
Clinton	619	1,253	2,836,804	455	1,083	2,103,114	164	170	733,690
Columbia	482	1,025	2,273,679	342	878	1,731,873	140	147	541,806
Cortland	473	1,149	2,670,412	364	1,036	2,101,262	109	113	569,150
Delaware	218	426	1,056,193	155	361	757,137	63	65	299,056
Dutchess	1,729	3,651	9,557,053	1,265	3,165	7,328,834	464	486	2,228,219
Erie	20,068	45,623	98,142,754	13,924	39,264	72,493,081	6,144	6,359	25,649,673
Essex	273	585	1,247,157	193	503	948,935	80	82	298,222
Franklin	432	873	1,782,005	303	740	1,316,869	129	133	465,136
Fulton	454	980	2,025,724	323	845	1,492,791	131	135	532,933
Genesee	297	703	1,600,540	216	617	1,189,445	81	86	411,095
Greene	442	940	2,146,135	331	826	1,696,830	111	114	449,305
Hamilton	19	34	77,833	14	29	55,082	5	5	22,751
Herkimer	411	931	1,897,903	312	829	1,531,616	99	102	366,287
Jefferson	1,398	3,035	7,084,613	991	2,613	5,326,501	407	422	1,758,112
Lewis	182	392	732,343	123	332	529,196	59	60	207,147
Livingston	555	1,147	2,798,729	378	963	2,022,168	177	184	776,561
Madison	195	386	948,543	156	347	753,355	39	39	195,188
Monroe	18,218	42,708	114,533,964	12,984	37,267	88,534,120	5,234	5,441	25,999,844
Montgomery	329	713	1,642,582	227	609	1,141,935	102	104	500,647
Nassau	5,914	12,290	37,481,260	4,165	10,483	28,129,735	1,749	1,807	9,351,525
Niagara	3,149	6,853	15,047,176	2,326	6,011	11,668,884	823	842	3,378,292
Oneida	3,148	7,962	16,252,732	2,352	7,120	12,756,884	796	842	3,495,848
Onondaga	6,618	15,848	35,547,520	4,972	14,124	28,137,942	1,646	1,724	7,409,578
Ontario	616	1,299	3,149,734	415	1,094	2,189,210	201	205	960,524
Orange	3,212	8,520	21,220,331	2,443	7,727	16,707,128	769	793	4,513,203
Orleans	463	1,062	2,468,325	340	936	1,925,929	123	126	542,396
Oswego	1,044	2,494	5,245,397	823	2,267	4,302,614	221	227	942,783
Otsego	139	258	704,721	101	219	510,370	38	39	194,351
Putnam	130	228	1,042,372	79	171	678,125	51	57	364,247
Rensselaer	1,354	3,096	7,113,736	1,002	2,736	5,296,990	352	360	1,816,746
Rockland	1,486	4,162	10,153,582	1,016	3,673	7,491,053	470	489	2,662,529
St. Lawrence	1,426	3,065	6,319,716	1,057	2,682	4,942,245	369	383	1,377,471
Saratoga	278	475	1,445,724	208	402	1,019,742	70	73	425,982
Schenectady	1,261	3,072	6,959,899	1,007	2,810	5,692,361	254	282	1,267,538
Schoharie	114	229	655,426	83	197	494,591	31	32	160,835
Schuyler	133	278	643,003	98	241	474,115	35	37	168,888
Seneca	177	387	848,746	138	346	682,723	39	41	166,023
Steuben	1,232	2,735	5,574,312	870	2,362	4,177,693	362	373	1,396,619
Suffolk	8,760	19,017	65,526,082	5,848	15,980	51,327,093	2,912	3,037	14,198,989
Sullivan	628	1,467	3,260,066	478	1,312	2,564,670	150	155	695,396
Tioga	377	867	1,793,360	312	799	1,482,710	65	68	310,650
Tompkins	747	1,491	4,207,110	492	1,227	2,863,131	255	284	1,343,979
Ulster	1,563	3,247	8,756,579	1,175	2,860	6,954,865	388	387	1,801,714
Warren	239	505	1,255,216	162	424	864,448	77	81	390,768
Washington	443	884	2,267,408	325	763	1,676,364	118	121	591,044
Wayne	655	1,459	3,333,416	479	1,278	2,510,087	176	181	823,329
Westchester	12,556	27,924	105,119,375	8,275	23,456	73,882,858	4,281	4,468	31,236,517
Wyoming	192	363	937,308	125	295	658,388	67	68	278,920
Yates	103	202	481,350	66	164	337,436	37	38	147,914

\* Expenditures partially estimated.

Table A-9  
**FOOD STAMPS**  
 Monthly Average Households and Persons, and Annual Expenditures  
 1999 SUMMARY

Local District	Total			Temporary Assistance			Non-Temporary Assistance		
	Households	Persons	Food Stamps Benefits	Households	Persons	Food Stamps Benefits	Households	Persons	Food Stamps Benefits
New York State	739,643	1,511,197	\$1,444,479,765	545,044	1,030,179	\$1,041,635,757	194,599	481,018	\$402,844,008
New York City	490,072	978,323	1,000,779,732	400,773	766,533	799,960,999	89,299	211,790	200,818,733
Rest of State	249,571	532,874	443,700,033	144,271	263,646	241,674,758	105,300	269,228	202,025,275
Albany	8,120	17,242	14,834,379	4,772	8,920	8,261,823	3,348	8,322	6,572,556
Allegany	1,911	4,179	3,143,375	1,034	1,919	1,606,367	877	2,260	1,537,008
Broome	6,065	12,698	10,144,643	3,460	6,315	5,644,806	2,605	6,383	4,499,837
Cattaraugus	2,879	5,952	4,468,660	1,235	1,918	1,705,659	1,644	4,034	2,763,001
Cayuga	1,970	4,302	3,431,487	776	1,178	1,034,824	1,194	3,124	2,396,663
Chautauqua	5,060	10,888	8,962,475	2,920	5,313	5,093,732	2,140	5,575	3,868,743
Chemung	2,516	5,530	4,220,679	1,311	2,270	2,009,105	1,205	3,260	2,211,574
Chenango	1,564	3,532	2,811,848	512	831	769,650	1,052	2,701	2,042,198
Clinton	2,809	5,552	4,426,515	1,307	1,763	1,545,894	1,502	3,789	2,880,621
Columbia	1,328	2,599	2,098,212	639	997	938,909	689	1,602	1,158,303
Cortland	1,357	2,997	2,461,752	677	1,154	1,050,502	680	1,843	1,411,250
Delaware	1,162	2,269	1,688,673	471	621	494,405	691	1,648	1,194,268
Dutchess	3,698	7,162	6,123,798	1,958	3,414	3,292,048	1,740	3,748	2,831,750
Erie	39,270	81,671	71,305,485	24,483	45,582	45,273,427	14,787	36,089	26,032,058
Essex	1,083	2,101	1,477,455	506	733	573,550	577	1,368	903,905
Franklin	1,615	3,286	2,579,037	728	1,018	902,976	887	2,268	1,676,061
Fulton	1,649	3,538	2,878,580	762	1,138	1,042,704	887	2,400	1,835,876
Genesee	1,160	2,483	1,933,729	525	814	738,281	635	1,669	1,195,448
Greene	1,203	2,454	2,017,592	579	945	890,549	624	1,509	1,127,043
Hamilton	142	218	140,981	26	35	29,372	116	183	111,609
Herkimer	1,757	3,833	2,963,939	708	1,079	935,340	1,049	2,754	2,028,599
Jefferson	3,532	7,995	6,360,978	1,790	3,054	2,739,295	1,742	4,941	3,621,683
Lewis	753	1,656	1,320,849	297	463	399,153	456	1,193	921,696
Livingston	1,489	2,914	2,396,244	726	1,194	1,159,024	763	1,720	1,237,220
Madison	1,341	2,757	2,133,096	524	645	513,551	817	2,112	1,619,545
Monroe	26,790	59,222	48,713,212	19,577	39,304	34,905,707	7,213	19,918	13,807,505
Montgomery	1,668	3,770	3,220,910	607	886	791,974	1,061	2,884	2,428,936
Nassau	10,477	19,630	16,712,308	6,832	11,747	10,751,808	3,645	7,883	5,960,500
Niagara	6,303	13,331	10,994,992	3,756	7,041	6,472,303	2,547	6,290	4,522,689
Oneida	9,174	20,168	16,702,383	4,513	8,240	7,546,610	4,661	11,928	9,155,773
Onondaga	12,798	29,160	24,484,975	7,802	16,282	14,195,743	4,996	12,878	10,289,232
Ontario	1,897	3,667	2,867,888	917	1,455	1,323,952	980	2,212	1,543,936
Orange	7,535	19,286	17,192,953	3,524	7,635	7,307,404	4,011	11,651	9,885,549
Orleans	1,176	2,660	2,137,271	568	1,042	1,002,625	608	1,618	1,134,646
Oswego	3,275	8,073	6,497,587	1,399	2,468	2,193,077	1,876	5,605	4,304,510
Otsego	1,180	2,271	1,727,623	444	522	421,171	736	1,749	1,308,452
Putnam	462	723	504,101	269	343	248,366	193	380	255,735
Rensselaer	3,885	8,248	6,974,108	1,819	3,078	2,772,151	2,066	5,170	4,201,957
Rockland	4,602	14,624	12,625,161	1,970	3,893	2,905,296	2,632	10,731	9,719,865
St. Lawrence	3,502	7,432	5,770,049	1,889	3,245	2,847,227	1,613	4,187	2,922,822
Saratoga	2,529	5,054	4,244,697	820	936	788,183	1,709	4,118	3,456,514
Schenectady	3,781	8,296	6,750,999	1,799	3,168	2,817,048	1,982	5,128	3,933,951
Schoharie	705	1,432	1,125,371	280	366	290,265	425	1,066	835,106
Schuyler	411	856	666,211	184	293	259,161	227	563	407,050
Seneca	805	1,537	1,095,634	309	452	341,949	496	1,085	753,685
Steuben	2,908	6,602	5,219,343	1,507	2,707	2,529,966	1,401	3,895	2,889,377
Suffolk	15,889	31,256	26,208,247	10,239	18,183	16,289,933	5,650	13,073	9,918,314
Sullivan	1,993	4,063	3,089,235	1,012	1,572	1,353,901	981	2,491	1,735,334
Tioga	1,003	2,354	1,833,664	471	819	740,496	532	1,535	1,093,168
Tompkins	1,907	3,838	3,086,338	974	1,562	1,350,563	933	2,276	1,735,775
Ulster	3,805	7,218	5,835,594	2,110	3,377	2,959,528	1,695	3,841	2,876,066
Warren	1,489	2,991	2,383,587	676	999	843,374	813	1,992	1,540,213
Washington	1,410	2,819	2,257,311	657	981	892,896	753	1,838	1,364,415
Wayne	2,123	4,082	3,236,643	1,036	1,657	1,541,654	1,087	2,425	1,694,989
Westchester	17,248	35,647	31,037,632	13,063	25,350	23,687,182	4,185	10,297	7,350,450
Wyoming	722	1,470	1,176,901	275	402	360,341	447	1,068	816,560
Yates	686	1,286	1,002,644	247	328	297,958	439	958	704,686

Note: Food Stamps households containing only SSI recipients are counted as "Temporary Assistance" in accordance with Federal reporting requirements.

Table A-10  
**SUPPLEMENTAL SECURITY INCOME**  
 Monthly Average Recipients, Total Annual Program Expenditures and Federal and State Shares  
 by Local District  
 1999 SUMMARY

Local District	Expenditures			
	Recipients	Total	Federal	State
New York State	613,741	\$3,195,496,827	\$2,631,661,428	\$563,835,399
New York City	385,452	2,088,377,422	1,761,931,588	326,445,834
Rest of State	216,963	1,061,809,069	840,720,071	221,088,998
Albany	6,407	31,893,525	24,850,187	7,043,338
Allegany	1,484	7,285,428	5,838,461	1,446,967
Broome	4,890	23,745,159	19,405,404	4,339,755
Cattaraugus	2,342	11,778,573	9,587,962	2,190,611
Cayuga	1,773	8,602,007	6,627,029	1,974,978
Chautauqua	3,929	19,179,422	15,432,869	3,746,553
Chemung	2,792	13,299,839	10,822,522	2,477,317
Chenango	1,281	5,747,246	4,755,322	991,924
Clinton	2,482	11,602,525	9,383,414	2,219,111
Columbia	1,528	7,341,135	5,528,742	1,812,393
Cortland	1,226	5,925,306	4,722,721	1,202,585
Delaware	1,165	5,239,267	4,079,750	1,159,517
Dutchess	4,305	21,361,194	15,913,335	5,447,859
Erie	25,404	130,301,949	106,019,213	24,282,736
Essex	908	4,181,454	3,081,669	1,099,785
Franklin	1,594	7,426,954	5,843,357	1,583,597
Fulton	1,694	7,445,181	5,862,582	1,582,599
Genesee	981	4,455,195	3,510,810	944,385
Greene	1,049	4,904,262	3,879,172	1,025,090
Hamilton	65	268,543	217,426	51,117
Herkimer	1,598	7,066,930	5,644,663	1,422,267
Jefferson	2,773	12,993,227	10,390,580	2,602,647
Lewis	639	2,924,144	2,358,549	565,595
Livingston	920	4,379,112	3,566,187	812,925
Madison	1,228	5,516,406	4,239,240	1,277,166
Monroe	16,936	86,971,062	70,509,292	16,461,770
Montgomery	1,344	5,827,075	4,582,428	1,244,647
Nassau	16,570	79,120,884	60,624,200	18,496,684
Niagara	4,865	23,807,503	18,951,434	4,856,069
Oneida	7,048	34,665,182	28,073,804	6,591,378
Onondaga	10,894	55,247,908	45,480,475	9,767,433
Ontario	1,480	7,112,202	5,692,817	1,419,385
Orange	5,969	28,720,406	23,002,901	5,717,505
Orleans	902	4,063,706	3,302,404	761,302
Oswego	2,816	13,339,337	11,083,458	2,255,879
Otsego	1,345	6,186,554	4,602,491	1,584,063
Putnam	723	3,531,750	2,507,406	1,024,344
Rensselaer	3,086	14,963,998	11,709,017	3,254,981
Rockland	4,252	21,350,076	15,437,922	5,912,154
St. Lawrence	3,681	17,439,836	14,402,022	3,037,814
Saratoga	2,433	10,875,700	8,559,733	2,315,967
Schenectady	3,502	17,336,927	13,812,010	3,524,917
Schoharie	718	3,200,849	2,296,876	903,973
Schuyler	497	2,305,503	1,791,250	514,253
Seneca	709	3,300,216	2,546,625	753,591
Steuben	2,804	13,748,039	11,320,715	2,427,324
Suffolk	20,914	102,670,748	77,665,137	25,005,611
Sullivan	2,551	12,554,793	9,017,647	3,537,146
Tioga	988	4,665,808	3,930,081	735,727
Tompkins	1,516	7,335,857	5,757,794	1,577,863
Ulster	3,990	19,842,393	15,470,460	4,171,933
Warren	1,418	6,419,330	5,205,916	1,213,414
Washington	1,348	6,281,540	4,948,858	1,332,682
Wayne	1,840	8,734,437	7,017,696	1,716,741
Westchester	14,258	70,402,175	55,803,760	14,598,415
Wyoming	625	2,925,114	2,359,858	565,256
Yates	484	2,198,378	1,692,418	505,960
Mental Hygiene	11,326	45,310,336	29,009,769	16,300,567

Note: Only New York State includes Mental Hygiene.