

RECEIVED APR - 1 1999



NEW YORK STATE
OFFICE OF TEMPORARY AND DISABILITY ASSISTANCE
40 North Pearl Street, Albany, New York 12243-0001

George E. Pataki
Governor

Brian J. Wing
Commissioner

Temporary and Disability Assistance Statistics

December 1998

Temporary Assistance

Temporary Assistance recipients totaled 1,005,246 in December 1998, decreasing 6,435 (-0.6%) from the previous month. Expenditures for Temporary Assistance increased \$6.7 million (+3.4%) over November, totaling \$202,373,323.

For the Calendar Year 1998, Temporary Assistance expenditures totaled \$2.7 billion with a monthly average recipient count of 1,076,135. Current year costs decreased \$392.6 million (-12.9%) from 1997, while the monthly average number of individuals decreased 166,936 (-13.4%) in CY 1998.

Food Stamps

Individuals receiving Food Stamps benefits totaled 1,567,750 in December 1998, decreasing 16,626 (-1.0%) from the previous month. Total value of Food Stamps benefits was \$125,435,385 in December, increasing only \$656 over November.

For the Calendar Year 1998, Food Stamps recipients averaged 1,643,820 per month, decreasing 206,069 (-11.1%) from the previous year's monthly average. Total expenditures for CY 1998 were \$1.5 billion, decreasing \$175.8 million (-10.3%) from the previous year.

Supplemental Security Income

For the month of December 1998, SSI recipients (including Mental Hygiene) totaled 613,250, decreasing 5,590 (-0.9%) from the previous month. Expenditures for December totaled \$260,691,803, decreasing \$2.9 million (-1.1%) from November 1998.

Year-end totals for 1998 for the SSI Program were as follows: monthly average recipients: 609,197; total expenditures: \$3,112,325,501. These were increases of +1.5% for recipients and +5.2 for expenditures over CY 1997.

Note: Annual 1998 tables are contained in this issue.

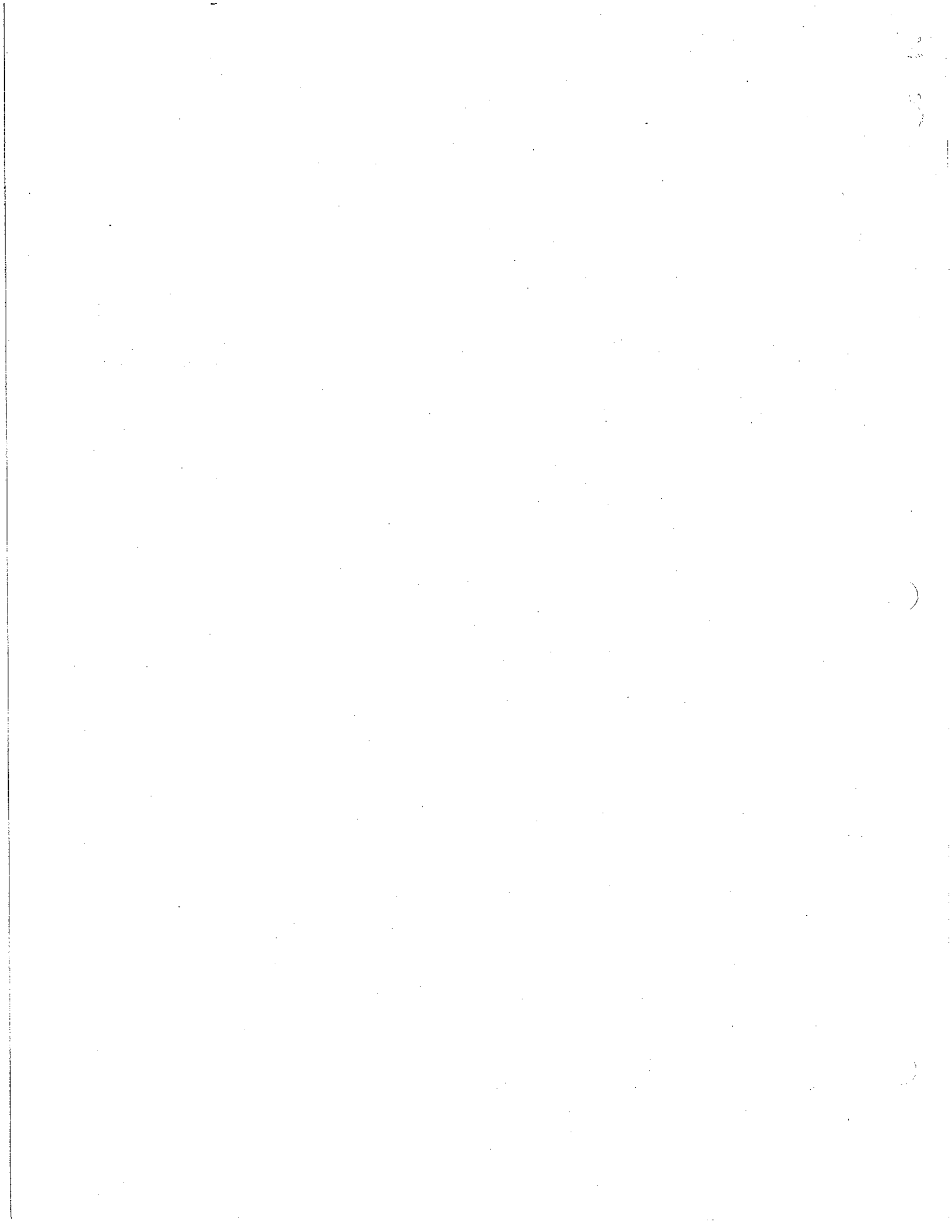


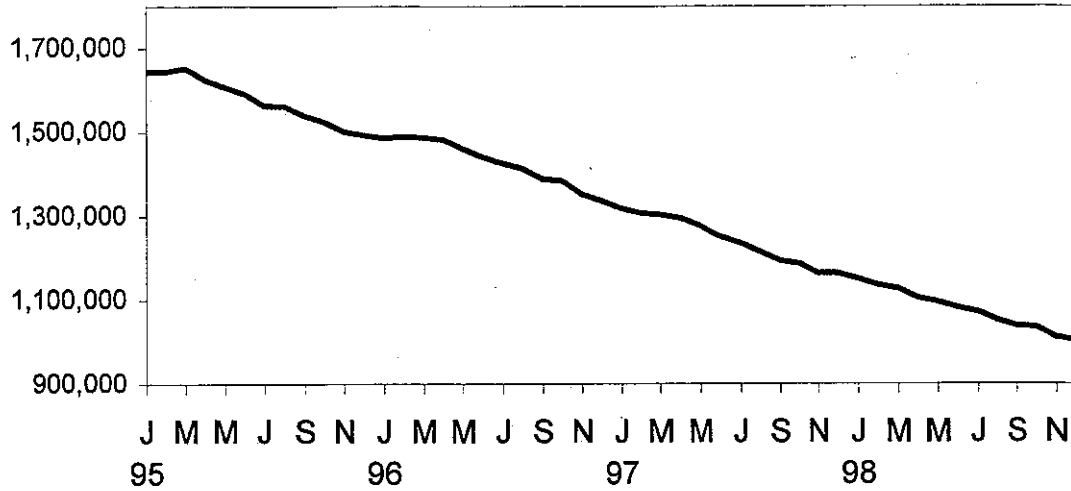
Table of Contents

Page Number

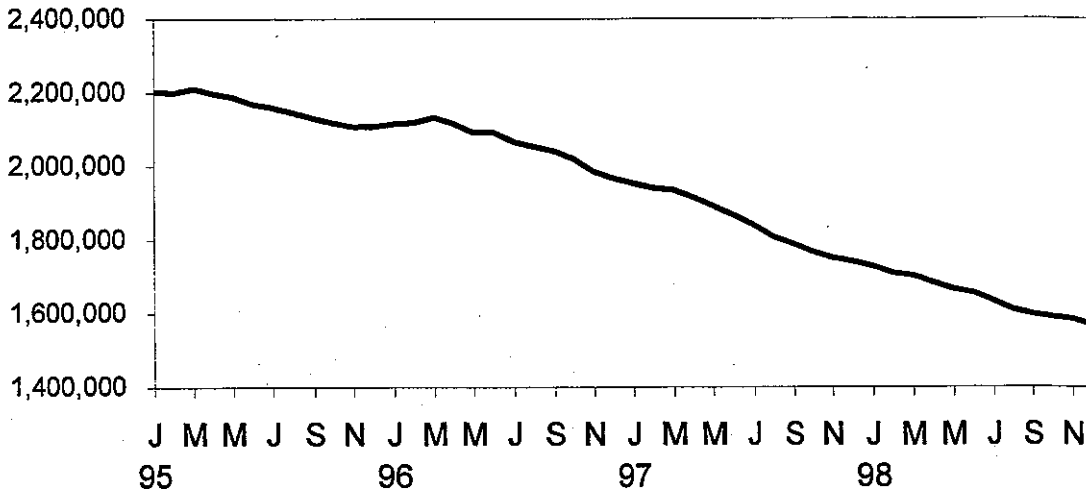
Graphs	4
Summary Tables	5
Temporary Assistance by Program Area	6
Temporary Assistance by Funding Source	11
Other Programs	19
1998 Summary Tables.....	27

NEW YORK STATE JANUARY 1995 - DECEMBER 1998

TEMPORARY ASSISTANCE RECIPIENTS

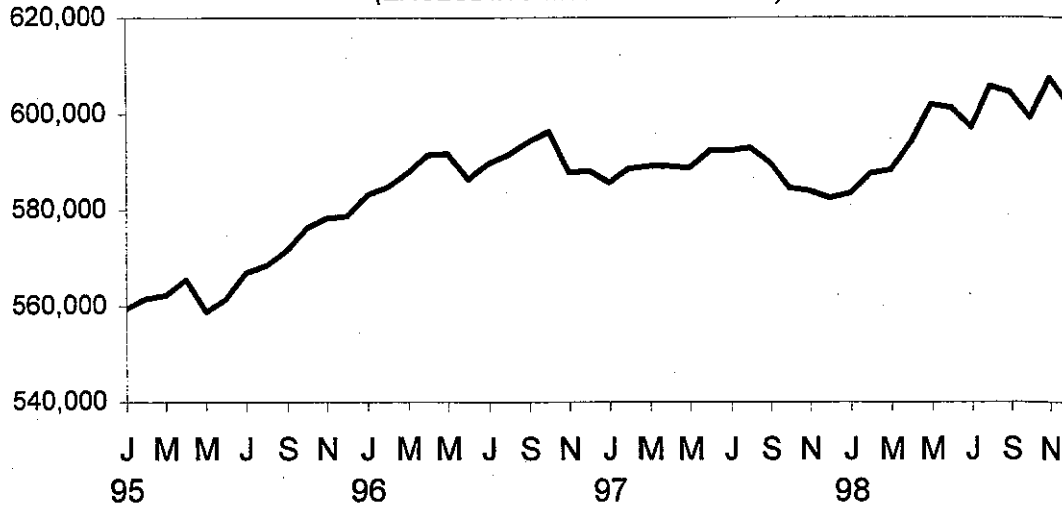


FOOD STAMPS PERSONS



SSI PERSONS

(EXCLUDING MENTAL HYGIENE)



SELECTED SUMMARY PROGRAM DATA
BY REGION

Table 1
TEMPORARY AND DISABILITY ASSISTANCE CASES
December 1998

Region	Cases					
	Temporary Assistance by Program				Supplemental Security Income	Food Stamps
	Total	Family Assistance	PG - Interim	Safety Net Assistance		
New York State	451,115	301,109	5,611	144,395	601,810	763,927
New York City	323,716	210,101	5,596	108,019	384,004	505,619
Rest of State	127,399	91,008	15	36,376	217,806	258,308

Table 2
TEMPORARY AND DISABILITY ASSISTANCE RECIPIENTS
December 1998

Region	Recipients					
	Temporary Assistance by Program				Supplemental Security Income	Food Stamps
	Total	Family Assistance	PG - Interim	Safety Net Assistance		
New York State	1,005,246	830,759	16,281	158,206	601,810	1,567,750
New York City	711,034	575,915	16,246	118,873	384,004	1,011,136
Rest of State	294,212	254,844	35	39,333	217,806	556,614

Table 3
TEMPORARY AND DISABILITY ASSISTANCE EXPENDITURES
December 1998

Region	Expenditures					
	Temporary Assistance by Program				Supplemental Security Income	Food Stamps
	Total	Family Assistance	PG - Interim	Safety Net Assistance		
New York State	\$ 202,373,323	\$ 154,061,217	\$ 2,685,688	\$ 45,626,418	\$ 256,996,691	\$ 125,435,385
New York City	135,125,000	102,344,000	2,681,000	30,100,000	169,435,648	86,702,176
Rest of State	67,248,323	51,717,217	4,688	15,526,418	87,561,043	38,733,209

Note: NYC Temporary Assistance expenditures partially estimated.

Note: Due to the ongoing welfare reform transition, New York City data for federally-participating Safety Net cases is included in Family Assistance.

Table 4
TEMPORARY ASSISTANCE
 Year to Year Monthly Comparison by Local District
 Cases, Recipients and Expenditures
 December 1998

Local District	December 1998			January 1997			January 1996		
	Cases	Recipients	Expenditures	Cases	Recipients	Expenditures	Cases	Recipients	Expenditures
New York State	451,115	1,005,246	\$ 202,373,323	593,733	1,319,967	\$ 268,923,159	671,320	1,487,248	\$ 308,727,888
New York City*	323,716	711,034	135,125,000	424,353	925,188	179,259,000	479,869	1,041,529	207,161,000
Rest of State	127,399	294,212	67,248,323	169,380	394,779	89,664,159	191,451	445,719	101,566,888
Albany	3,809	9,228	2,391,648	4,592	11,433	2,528,863	5,048	12,574	3,275,059
Allegany	808	1,933	318,411	1,184	2,811	546,366	1,311	3,246	610,569
Broome	2,840	6,837	1,399,537	4,338	9,993	2,039,928	5,392	12,179	2,583,366
Cattaraugus	903	2,119	349,437	1,314	3,033	526,351	1,373	3,197	541,372
Cayuga	535	1,222	222,557	798	1,823	367,414	916	2,120	407,698
Chautauqua	2,392	5,718	1,036,515	3,333	7,890	1,659,645	3,694	8,938	1,711,968
Chemung	1,185	2,754	435,987	1,765	4,036	742,999	1,987	4,635	822,459
Chenango	350	900	139,202	648	1,572	274,486	786	1,997	341,503
Clinton	696	1,449	257,134	1,097	2,405	421,280	1,177	2,607	461,306
Columbia	576	1,280	233,875	834	1,880	364,333	933	2,061	403,967
Cortland	503	1,271	248,620	744	1,844	403,599	810	2,027	424,219
Delaware	234	472	102,767	477	1,148	213,440	571	1,364	280,419
Dutchess	1,931	4,185	887,942	2,599	5,832	1,257,315	3,049	6,927	1,614,166
Erie	22,112	50,414	9,776,095	26,208	59,193	12,255,783	28,675	64,915	13,527,229
Essex	311	691	115,322	603	1,283	302,220	766	1,691	333,182
Franklin	551	1,125	186,934	956	2,087	370,866	1,146	2,511	461,262
Fulton	491	1,103	186,993	956	2,159	383,692	972	2,339	399,797
Genesee	302	729	151,251	492	1,196	255,283	567	1,359	254,850
Greene	490	1,110	206,639	716	1,594	314,090	846	1,833	369,984
Hamilton	26	51	8,114	30	69	12,028	27	51	8,861
Herkimer	427	1,015	164,139	620	1,552	252,845	737	1,887	299,615
Jefferson	1,624	3,571	736,522	2,152	4,913	1,007,414	2,406	5,538	1,100,334
Lewis	193	441	73,903	300	693	109,527	389	954	149,118
Livingston	631	1,252	262,317	905	1,938	414,566	1,109	2,348	519,920
Madison	209	418	83,775	390	903	175,941	516	1,221	224,126
Monroe	18,813	44,598	10,822,317	22,413	52,453	13,677,801	24,951	57,754	14,362,974
Montgomery	353	779	155,497	593	1,479	267,260	665	1,741	327,899
Nassau	6,542	13,790	3,348,861	9,412	19,989	5,269,365	11,373	23,891	6,415,225
Niagara	3,488	7,685	1,482,081	4,559	9,978	1,976,596	5,329	11,340	2,334,081
Oneida	3,571	8,951	1,658,817	3,994	10,066	2,070,744	4,627	11,569	2,224,041
Onondaga	7,660	18,621	3,923,627	10,440	25,734	5,415,336	11,886	28,891	6,161,367
Ontario	671	1,451	296,478	1,097	2,398	473,175	1,335	2,894	627,374
Orange	3,451	9,111	1,843,988	4,661	12,407	2,551,079	5,175	13,453	2,782,116
Orleans	473	1,048	211,708	664	1,507	299,381	767	1,769	343,386
Oswego	1,182	2,877	496,496	2,119	5,347	942,292	2,511	6,508	1,164,564
Otsego	198	392	80,320	358	853	161,636	475	1,184	224,945
Putnam	139	251	66,055	250	471	161,555	293	548	157,261
Rensselaer	1,446	3,423	644,296	2,131	4,861	988,864	2,452	5,735	1,152,954
Rockland	1,605	4,510	989,511	2,241	6,201	1,265,916	2,549	6,992	1,465,887
St. Lawrence	1,599	3,506	688,108	2,584	5,789	1,100,732	2,886	6,510	1,317,280
Saratoga	325	582	133,291	659	1,594	291,692	803	1,910	331,567
Schenectady	1,294	3,262	616,229	2,146	5,490	1,107,283	2,550	6,180	1,265,920
Schoharie	122	247	53,165	266	613	119,486	281	671	129,756
Schuyler	141	319	58,548	211	452	78,601	310	712	125,518
Seneca	187	421	79,549	371	915	173,587	324	760	148,486
Steuben	1,373	3,205	528,974	2,146	4,947	928,681	2,203	5,074	898,771
Suffolk	9,754	21,786	7,016,018	13,753	32,618	9,076,521	15,707	37,496	10,092,983
Sullivan	761	1,802	329,896	1,109	2,857	489,355	1,293	3,342	600,691
Tioga	397	945	164,746	705	1,660	335,450	848	2,085	407,488
Tompkins	731	1,497	337,762	1,066	2,192	471,946	1,286	2,640	623,778
Ulster	1,753	3,755	841,722	2,479	5,675	1,273,345	2,782	6,512	1,424,316
Warren	261	559	114,279	421	910	173,587	529	1,215	246,412
Washington	512	1,061	219,618	929	2,025	465,809	995	2,286	511,535
Wayne	766	1,709	325,208	1,297	2,938	627,433	1,416	3,243	717,919
Westchester	13,407	30,194	9,635,713	15,679	35,838	9,999,728	16,974	38,875	11,587,364
Wyoming	193	388	81,246	344	756	142,326	373	800	143,452
Yates	102	199	28,563	232	486	87,323	300	620	123,229

* Expenditures partially estimated.

Note: Prior to January 1998, "Temporary Assistance" was known as "Public Assistance".

Table 5
TEMPORARY ASSISTANCE
 Cases, Recipients, Children, Adults and Expenditures by Local District
 December 1998

Local District	Total				
	Cases	Recipients	Children	Adults	Expenditures
New York State	451,115	1,005,246	573,547	431,699	\$202,373,323
New York City*	323,716	711,034	395,102	315,932	135,125,000
Rest of State	127,399	294,212	178,445	115,767	67,248,323
Albany	3,809	9,228	5,779	3,449	2,391,648
Allegany	808	1,933	1,121	812	318,411
Broome	2,840	6,837	4,152	2,685	1,399,537
Cattaraugus	903	2,119	1,278	841	349,437
Cayuga	535	1,222	781	441	222,557
Chautauqua	2,392	5,718	3,481	2,237	1,036,515
Chemung	1,185	2,754	1,761	993	435,987
Chenango	350	900	572	328	139,202
Clinton	696	1,449	857	592	257,134
Columbia	576	1,280	772	508	233,875
Cortland	503	1,271	769	502	248,620
Delaware	234	472	293	179	102,767
Dutchess	1,931	4,185	2,566	1,619	887,942
Erie	22,112	50,414	29,322	21,092	9,776,095
Essex	311	691	391	300	115,322
Franklin	551	1,125	624	501	186,934
Fulton	491	1,103	651	452	186,993
Genesee	302	729	465	264	151,251
Greene	490	1,110	682	428	206,639
Hamilton	26	51	28	23	8,114
Herkimer	427	1,015	641	374	164,139
Jefferson	1,624	3,571	1,946	1,625	736,522
Lewis	193	441	253	188	73,903
Livingston	631	1,252	649	603	262,317
Madison	209	418	285	133	83,775
Monroe	18,813	44,598	27,316	17,282	10,822,317
Montgomery	353	779	473	306	155,497
Nassau	6,542	13,790	8,651	5,139	3,348,861
Niagara	3,488	7,685	4,582	3,103	1,482,081
Oneida	3,571	8,951	5,515	3,436	1,658,817
Onondaga	7,660	18,621	11,762	6,859	3,923,627
Ontario	671	1,451	853	598	296,478
Orange	3,451	9,111	6,066	3,045	1,843,988
Orleans	473	1,048	622	426	211,708
Oswego	1,182	2,877	1,834	1,043	496,496
Otsego	198	392	236	156	80,320
Putnam	139	251	139	112	66,055
Rensselaer	1,446	3,423	2,082	1,341	644,296
Rockland	1,605	4,510	3,130	1,380	989,511
St. Lawrence	1,599	3,506	1,981	1,525	688,108
Saratoga	325	582	404	178	133,291
Schenectady	1,294	3,262	2,214	1,048	616,229
Schoharie	122	247	152	95	53,165
Schuyler	141	319	187	132	58,548
Seneca	187	421	273	148	79,549
Steuben	1,373	3,205	1,784	1,421	528,974
Suffolk	9,754	21,786	13,490	8,296	7,016,018
Sullivan	761	1,802	1,160	642	329,896
Tioga	397	945	599	346	164,746
Tompkins	731	1,497	827	670	337,762
Ulster	1,753	3,755	2,314	1,441	841,722
Warren	261	559	313	246	114,279
Washington	512	1,061	615	446	219,618
Wayne	766	1,709	1,060	649	325,208
Westchester	13,407	30,194	17,367	12,827	9,635,713
Wyoming	193	388	207	181	81,246
Yates	102	199	118	81	28,563

*Expenditures partially estimated.

Table 6
FAMILY ASSISTANCE
Cases, Recipients, Children, Adults and Expenditures by Local District
December 1998

Local District	Family Assistance				
	Cases	Recipients	Children	Adults	Expenditures
New York State	301,109	830,759	556,974	273,785	\$154,061,217
New York City*	210,101	575,915	380,111	195,804	102,344,000
Rest of State	91,008	254,844	176,863	77,981	51,717,217
Albany	2,971	8,349	5,749	2,600	2,005,312
Allegany	625	1,735	1,118	617	261,534
Broome	2,147	6,090	4,144	1,946	1,129,127
Cattaraugus	677	1,873	1,272	601	280,008
Cayuga	422	1,103	776	327	177,162
Chautauqua	1,853	5,131	3,459	1,672	868,713
Chemung	937	2,480	1,745	735	358,468
Chenango	284	816	559	257	119,222
Clinton	506	1,241	845	396	192,461
Columbia	418	1,113	771	342	181,635
Cortland	399	1,165	769	396	209,411
Delaware	170	395	285	110	78,713
Dutchess	1,387	3,567	2,534	1,033	665,439
Erie	15,273	43,267	29,255	14,012	7,349,610
Essex	219	592	387	205	84,582
Franklin	386	956	623	333	139,439
Fulton	348	955	648	307	141,175
Genesee	232	656	463	193	120,690
Greene	378	995	681	314	165,309
Hamilton	19	43	28	15	6,369
Herkimer	337	922	641	281	136,855
Jefferson	1,145	3,045	1,914	1,131	556,867
Lewis	134	370	246	124	52,844
Livingston	420	1,025	643	382	189,974
Madison	165	373	285	88	67,247
Monroe	13,346	38,355	26,729	11,626	8,541,186
Montgomery	247	667	470	197	107,021
Nassau	4,615	11,766	8,606	3,160	2,494,542
Niagara	2,547	6,656	4,515	2,141	1,160,273
Oneida	2,582	7,875	5,481	2,394	1,312,129
Onondaga	5,823	16,650	11,713	4,937	3,200,660
Ontario	453	1,209	836	373	195,692
Orange	2,611	8,241	6,050	2,191	1,441,733
Orleans	334	899	621	278	160,925
Oswego	937	2,624	1,832	792	413,416
Otsego	130	321	235	86	51,534
Putnam	87	196	138	58	42,678
Rensselaer	1,087	3,046	2,071	975	497,895
Rockland	1,140	4,026	3,128	898	773,476
St. Lawrence	1,182	3,056	1,966	1,090	544,108
Saratoga	236	489	401	88	92,351
Schenectady	1,051	3,001	2,208	793	503,843
Schoharie	91	215	150	65	41,380
Schuyler	107	283	186	97	47,454
Seneca	144	374	269	105	60,539
Steuben	983	2,790	1,772	1,018	406,636
Suffolk	6,652	18,453	13,401	5,052	5,751,006
Sullivan	578	1,610	1,160	450	247,897
Tioga	333	878	597	281	142,869
Tompkins	480	1,225	817	408	221,771
Ulster	1,287	3,231	2,263	968	655,297
Warren	170	455	307	148	79,076
Washington	390	928	609	319	164,802
Wayne	557	1,486	1,055	431	245,964
Westchester	8,779	25,094	17,112	7,982	6,505,611
Wyoming	128	322	207	115	54,435
Yates	69	166	118	48	20,852

*Expenditures partially estimated.

Note: Due to the ongoing welfare reform transition, New York City data for federally-participating Safety Net cases is included in Family Assistance.

Table 7
PREDETERMINATION GRANT - INTERIM
 Cases, Recipients, Children, Adults and Expenditures by Local District
 December 1998

Local District	Predetermination Grant - Interim				
	Cases	Recipients	Children	Adults	Expenditures
New York State	5,611	16,281	9,667	6,614	\$2,685,688
New York City*	5,596	16,246	9,655	6,591	2,681,000
Rest of State	15	35	12	23	4,688
Albany	0	0	0	0	0
Allegany	0	0	0	0	0
Broome	0	0	0	0	0
Cattaraugus	0	0	0	0	0
Cayuga	0	0	0	0	0
Chautauqua	0	0	0	0	0
Chemung	0	0	0	0	0
Chenango	0	0	0	0	0
Clinton	0	0	0	0	0
Columbia	0	0	0	0	0
Cortland	0	0	0	0	0
Delaware	0	0	0	0	0
Dutchess	0	0	0	0	0
Erie	2	3	1	2	254
Essex	0	0	0	0	0
Franklin	0	0	0	0	0
Fulton	0	0	0	0	0
Genesee	0	0	0	0	0
Greene	0	0	0	0	0
Hamilton	0	0	0	0	0
Herkimer	0	0	0	0	0
Jefferson	0	0	0	0	0
Lewis	0	0	0	0	0
Livingston	0	0	0	0	0
Madison	0	0	0	0	0
Monroe	5	10	3	7	253
Montgomery	0	0	0	0	0
Nassau	1	3	3	0	799
Niagara	0	0	0	0	0
Oneida	0	0	0	0	0
Onondaga	0	0	0	0	0
Ontario	0	0	0	0	0
Orange	2	4	4	0	651
Orleans	0	0	0	0	0
Oswego	0	0	0	0	0
Otsego	0	0	0	0	0
Putnam	0	0	0	0	0
Rensselaer	1	1	0	1	27
Rockland	0	0	0	0	0
St. Lawrence	0	0	0	0	0
Saratoga	0	0	0	0	0
Schenectady	0	0	0	0	0
Schoharie	0	0	0	0	0
Schuyler	0	0	0	0	0
Seneca	0	0	0	0	0
Steuben	0	0	0	0	0
Suffolk	4	14	1	13	2,704
Sullivan	0	0	0	0	0
Tioga	0	0	0	0	0
Tompkins	0	0	0	0	0
Ulster	0	0	0	0	0
Warren	0	0	0	0	0
Washington	0	0	0	0	0
Wayne	0	0	0	0	0
Westchester	0	0	0	0	0
Wyoming	0	0	0	0	0
Yates	0	0	0	0	0

*Expenditures partially estimated.

Table 8
SAFETY NET ASSISTANCE
Cases, Recipients, Children, Adults and Expenditures by Local District
December 1998

Local District	Safety Net Assistance				
	Cases	Recipients	Children	Adults	Expenditures
New York State	144,395	158,206	6,906	151,300	\$45,626,418
New York City*	108,019	118,873	5,336	113,537	30,100,000
Rest of State	36,376	39,333	1,570	37,763	15,526,418
Albany	838	879	30	849	386,336
Allegany	183	198	3	195	56,877
Broome	693	747	8	739	270,410
Cattaraugus	226	246	6	240	69,429
Cayuga	113	119	5	114	45,395
Chautauqua	539	587	22	565	167,802
Chemung	248	274	16	258	77,519
Chenango	66	84	13	71	19,980
Clinton	190	208	12	196	64,673
Columbia	158	167	1	166	52,240
Cortland	104	106	0	106	39,209
Delaware	64	77	8	69	24,054
Dutchess	544	618	32	586	222,503
Erie	6,837	7,144	66	7,078	2,426,231
Essex	92	99	4	95	30,740
Franklin	165	169	1	168	47,495
Fulton	143	148	3	145	45,818
Genesee	70	73	2	71	30,561
Greene	112	115	1	114	41,330
Hamilton	7	8	0	8	1,745
Herkimer	90	93	0	93	27,284
Jefferson	479	526	32	494	179,655
Lewis	59	71	7	64	21,059
Livingston	211	227	6	221	72,343
Madison	44	45	0	45	16,528
Monroe	5,462	6,233	584	5,649	2,280,878
Montgomery	106	112	3	109	48,476
Nassau	1,926	2,021	42	1,979	853,520
Niagara	941	1,029	67	962	321,808
Oneida	989	1,076	34	1,042	346,688
Onondaga	1,837	1,971	49	1,922	722,967
Ontario	218	242	17	225	100,786
Orange	838	866	12	854	401,604
Orleans	139	149	1	148	50,783
Oswego	245	253	2	251	83,080
Otsego	68	71	1	70	28,786
Putnam	52	55	1	54	23,377
Rensselaer	358	376	11	365	146,374
Rockland	465	484	2	482	216,035
St. Lawrence	417	450	15	435	144,000
Saratoga	89	93	3	90	40,940
Schenectady	243	261	6	255	112,386
Schoharie	31	32	2	30	11,785
Schuyler	34	36	1	35	11,094
Seneca	43	47	4	43	19,010
Steuben	390	415	12	403	122,338
Suffolk	3,098	3,319	88	3,231	1,262,308
Sullivan	183	192	0	192	81,999
Tioga	64	67	2	65	21,877
Tompkins	251	272	10	262	115,991
Ulster	466	524	51	473	186,425
Warren	91	104	6	98	35,203
Washington	122	133	6	127	54,816
Wayne	209	223	5	218	79,244
Westchester	4,628	5,100	255	4,845	3,130,102
Wyoming	65	66	0	66	26,811
Yates	33	33	0	33	7,711

*Expenditures partially estimated.

Note: Due to the ongoing welfare reform transition, New York City data for Federally-participating Safety Net cases is included in Family Assistance.

Table 9
TEMPORARY ASSISTANCE BY FUNDING SOURCE
 Cases, Recipients and Expenditures by Local District
 December 1998

Local District	Total			Federally Participating - TANF Family Assistance and Safety Net - FP			Federally Non- Participating Safety Net Assistance-FNP and PG-Interim		
	Cases	Recipients	Expenditures	Cases	Recipients	Expenditures	Cases	Recipients	Expenditures
New York State	451,115	1,005,246	\$202,373,323	301,918	833,045	\$154,600,742	149,197	172,201	\$47,772,581
New York City*	323,716	711,034	135,125,000	210,101	575,915	102,344,000	113,615	135,119	32,781,000
Rest of State	127,399	294,212	67,248,323	91,817	257,130	52,256,742	35,582	37,082	14,991,581
Albany	3,809	9,228	2,391,648	2,985	8,393	2,019,080	824	835	372,568
Allegany	808	1,933	318,411	625	1,735	261,534	183	198	56,877
Broome	2,840	6,837	1,399,537	2,147	6,090	1,129,127	693	747	270,410
Cattaraugus	903	2,119	349,437	678	1,874	280,292	225	245	69,145
Cayuga	535	1,222	222,557	425	1,111	178,406	110	111	44,151
Chautauqua	2,392	5,718	1,036,515	1,865	5,163	873,923	527	555	162,592
Chemung	1,185	2,754	435,987	945	2,504	361,290	240	250	74,697
Chenango	350	900	139,202	290	836	122,219	60	64	16,983
Clinton	696	1,449	257,134	516	1,261	196,280	180	188	60,854
Columbia	576	1,280	233,875	418	1,113	181,635	158	167	52,240
Cortland	503	1,271	248,620	399	1,165	209,411	104	106	39,209
Delaware	234	472	102,767	171	403	81,498	63	69	21,269
Dutchess	1,931	4,185	887,942	1,410	3,620	676,306	521	565	211,636
Errie	22,112	50,414	9,776,095	15,283	43,305	7,354,135	6,829	7,109	2,421,960
Essex	311	691	115,322	220	598	85,418	91	93	29,904
Franklin	551	1,125	186,934	387	957	139,764	164	168	47,170
Fulton	491	1,103	186,993	350	960	141,805	141	143	45,188
Genesee	302	729	151,251	233	659	121,042	69	70	30,209
Greene	490	1,110	206,639	380	998	166,558	110	112	40,081
Hamilton	26	51	8,114	19	43	6,369	7	8	1,745
Herkimer	427	1,015	164,139	338	923	136,986	89	92	27,153
Jefferson	1,624	3,571	736,522	1,164	3,095	566,500	460	476	170,022
Lewis	193	441	73,903	136	380	53,733	57	61	20,170
Livingston	631	1,252	262,317	422	1,033	191,048	209	219	71,269
Madison	209	418	83,775	166	374	67,452	43	44	16,323
Monroe	18,813	44,598	10,822,317	13,640	39,229	8,735,635	5,173	5,369	2,086,682
Montgomery	353	779	155,497	247	667	107,021	106	112	48,476
Nassau	6,542	13,790	3,348,861	4,638	11,829	2,513,316	1,904	1,961	835,545
Niagara	3,488	7,685	1,482,081	2,587	6,761	1,174,733	901	924	307,348
Oneida	3,571	8,951	1,658,817	2,600	7,918	1,319,524	971	1,033	339,293
Onondaga	7,660	18,621	3,923,627	5,848	16,714	3,212,522	1,812	1,907	711,105
Ontario	671	1,451	296,478	463	1,236	208,368	208	215	88,110
Orange	3,451	9,111	1,843,988	2,615	8,254	1,444,037	836	857	399,951
Orleans	473	1,048	211,708	336	902	163,920	137	146	47,788
Oswego	1,182	2,877	496,496	938	2,626	414,737	244	251	81,759
Otsego	198	392	80,320	132	324	52,872	66	68	27,448
Putnam	139	251	66,055	88	198	42,925	51	53	23,130
Rensselaer	1,446	3,423	644,296	1,094	3,063	500,565	352	360	143,731
Rockland	1,605	4,510	989,511	1,140	4,026	773,476	465	484	216,035
St. Lawrence	1,599	3,506	688,108	1,189	3,080	546,292	410	426	141,816
Saratoga	325	582	133,291	239	494	94,022	86	88	39,269
Schenectady	1,294	3,262	616,229	1,057	3,012	509,551	237	250	106,678
Schoharie	122	247	53,165	95	219	42,469	27	28	10,696
Schuyler	141	319	58,548	108	285	48,336	33	34	10,212
Seneca	187	421	79,549	147	381	63,410	40	40	16,139
Steuben	1,373	3,205	528,974	988	2,808	408,757	385	397	120,217
Suffolk	9,754	21,786	7,016,018	6,694	18,568	5,788,202	3,060	3,218	1,227,816
Sullivan	761	1,802	329,896	578	1,610	247,897	183	192	81,999
Tioga	397	945	164,746	336	883	145,010	61	62	19,736
Tompkins	731	1,497	337,762	486	1,240	227,013	245	257	110,749
Ulster	1,753	3,755	841,722	1,323	3,314	675,161	430	441	166,561
Warren	261	559	114,279	174	464	80,782	87	95	33,497
Washington	512	1,061	219,618	393	935	166,251	119	126	53,367
Wayne	766	1,709	325,208	560	1,495	246,982	206	214	78,226
Westchester	13,407	30,194	9,635,713	8,915	25,514	6,625,858	4,492	4,680	3,009,855
Wyoming	193	388	81,246	128	322	54,435	65	66	26,811
Yates	102	199	28,563	69	166	20,852	33	33	7,711

*Expenditures partially estimated.

Table 10
 TEMPORARY ASSISTANCE TO NEEDY FAMILIES (TANF) - FP BY PROGRAM
 Cases, Recipients, Children, Adults and Expenditures by Local District
 December 1998

Local District	Family Assistance					Safety Net Assistance - FP				
	Cases	Recipients	Children	Adults	Expenditures	Cases	Recipients	Children	Adults	Expenditures
New York State	301,109	830,759	556,974	273,785	\$154,061,217	See note	See note	See note	See note	See note
New York City*	210,101	575,915	380,111	195,804	102,344,000	See note	See note	See note	See note	See note
Rest of State	91,008	254,844	176,863	77,981	51,717,217	809	2,286	1,390	896	\$539,525
Albany	2,971	8,349	5,749	2,600	2,005,312	14	44	28	16	13,768
Allegany	625	1,735	1,118	617	261,534	0	0	0	0	0
Broome	2,147	6,090	4,144	1,946	1,129,127	0	0	0	0	0
Cattaraugus	677	1,873	1,272	601	280,008	1	1	1	0	284
Cayuga	422	1,103	776	327	177,162	3	8	5	3	1,244
Chautauqua	1,853	5,131	3,459	1,672	868,713	12	32	19	13	5,210
Chemung	937	2,480	1,745	735	358,468	8	24	15	9	2,822
Chenango	284	816	559	257	119,222	6	20	13	7	2,997
Clinton	506	1,241	845	396	192,461	10	20	11	9	3,819
Columbia	418	1,113	771	342	181,635	0	0	0	0	0
Cortland	399	1,165	769	396	209,411	0	0	0	0	0
Delaware	170	395	285	110	78,713	1	8	6	2	2,785
Dutchess	1,387	3,567	2,534	1,033	665,439	23	53	30	23	10,867
Erie	15,273	43,267	29,255	14,012	7,349,610	10	38	25	13	4,525
Essex	219	592	387	205	84,582	1	6	4	2	836
Franklin	386	956	623	333	139,439	1	1	1	0	325
Fulton	348	955	648	307	141,175	2	5	3	2	630
Genesee	232	656	463	193	120,690	1	3	2	1	352
Greene	378	995	681	314	165,309	2	3	1	2	1,249
Hamilton	19	43	28	15	6,369	0	0	0	0	0
Herkimer	337	922	641	281	136,855	1	1	0	1	131
Jefferson	1,145	3,045	1,914	1,131	556,867	19	50	28	22	9,633
Lewis	134	370	246	124	52,844	2	10	7	3	889
Livingston	420	1,025	643	382	189,974	2	8	5	3	1,074
Madison	165	373	285	88	67,247	1	1	0	1	205
Monroe	13,346	38,355	26,729	11,626	8,541,186	294	874	554	320	194,449
Montgomery	247	667	470	197	107,021	0	0	0	0	0
Nassau	4,615	11,766	8,606	3,160	2,494,542	23	63	38	25	18,774
Niagara	2,547	6,656	4,515	2,141	1,160,273	40	105	62	43	14,460
Oneida	2,582	7,875	5,481	2,394	1,312,129	18	43	27	16	7,395
Onondaga	5,823	16,650	11,713	4,937	3,200,660	25	64	38	26	11,862
Ontario	453	1,209	836	373	195,692	10	27	17	10	12,676
Orange	2,611	8,241	6,050	2,191	1,441,733	4	13	9	4	2,304
Orleans	334	899	621	278	160,925	2	3	1	2	2,995
Oswego	937	2,624	1,832	792	413,416	1	2	1	1	1,321
Otsego	130	321	235	86	51,534	2	3	1	2	1,338
Putnam	87	196	138	58	42,678	1	2	1	1	247
Rensselaer	1,087	3,046	2,071	975	497,895	7	17	10	7	2,670
Rockland	1,140	4,026	3,128	898	773,476	0	0	0	0	0
St. Lawrence	1,182	3,056	1,966	1,090	544,108	7	24	15	9	2,184
Saratoga	236	489	401	88	92,351	3	5	3	2	1,671
Schenectady	1,051	3,001	2,208	793	503,843	6	11	4	7	5,708
Schoharie	91	215	150	65	41,380	4	4	2	2	1,089
Schuyler	107	283	186	97	47,454	1	2	1	1	882
Seneca	144	374	269	105	60,539	3	7	4	3	2,871
Steuben	983	2,790	1,772	1,018	406,636	5	18	12	6	2,121
Suffolk	6,652	18,453	13,401	5,052	5,751,006	42	115	67	48	37,196
Sullivan	578	1,610	1,160	450	247,897	0	0	0	0	0
Tioga	333	878	597	281	142,869	3	5	2	3	2,141
Tompkins	480	1,225	817	408	221,771	6	15	9	6	5,242
Ulster	1,287	3,231	2,263	968	655,297	36	83	47	36	19,864
Warren	170	455	307	148	79,076	4	9	6	3	1,706
Washington	390	928	609	319	164,802	3	7	3	4	1,449
Wayne	557	1,486	1,055	431	245,964	3	9	5	4	1,018
Westchester	8,779	25,094	17,112	7,982	6,505,611	136	420	247	173	120,247
Wyoming	128	322	207	115	54,435	0	0	0	0	0
Yates	69	166	118	48	20,852	0	0	0	0	0

*Expenditures partially estimated.

Note: Due to the ongoing welfare reform transition, New York City data for Federally-participating Safety Net cases is included in Family Assistance

Table 11
SAFETY NET ASSISTANCE - FNP
Cases, Recipients, Children, Adults and Expenditures by Local District
December 1998

Local District	Safety Net Assistance - FNP				
	Cases	Recipients	Children	Adults	Expenditures
New York State	143,586	155,920	5,516	150,404	\$45,086,893
New York City*	108,019	118,873	5,336	113,537	30,100,000
Rest of State	35,567	37,047	180	36,867	14,986,893
Albany	824	835	2	833	372,568
Allegany	183	198	3	195	56,877
Broome	693	747	8	739	270,410
Cattaraugus	225	245	5	240	69,145
Cayuga	110	111	0	111	44,151
Chautauqua	527	555	3	552	162,592
Chemung	240	250	1	249	74,697
Chenango	60	64	0	64	16,983
Clinton	180	188	1	187	60,854
Columbia	158	167	1	166	52,240
Cortland	104	106	0	106	39,209
Delaware	63	69	2	67	21,269
Dutchess	521	565	2	563	211,636
Erie	6,827	7,106	41	7,065	2,421,706
Essex	91	93	0	93	29,904
Franklin	164	168	0	168	47,170
Fulton	141	143	0	143	45,188
Genesee	69	70	0	70	30,209
Greene	110	112	0	112	40,081
Hamilton	7	8	0	8	1,745
Herkimer	89	92	0	92	27,153
Jefferson	460	476	4	472	170,022
Lewis	57	61	0	61	20,170
Livingston	209	219	1	218	71,269
Madison	43	44	0	44	16,323
Monroe	5,168	5,359	30	5,329	2,086,429
Montgomery	106	112	3	109	48,476
Nassau	1,903	1,958	4	1,954	834,746
Niagara	901	924	5	919	307,348
Oneida	971	1,033	7	1,026	339,293
Onondaga	1,812	1,907	11	1,896	711,105
Ontario	208	215	0	215	88,110
Orange	834	853	3	850	399,300
Orleans	137	146	0	146	47,788
Oswego	244	251	1	250	81,759
Otsego	66	68	0	68	27,448
Putnam	51	53	0	53	23,130
Rensselaer	351	359	1	358	143,704
Rockland	465	484	2	482	216,035
St. Lawrence	410	426	0	426	141,816
Saratoga	86	88	0	88	39,269
Schenectady	237	250	2	248	106,678
Schoharie	27	28	0	28	10,696
Schuyler	33	34	0	34	10,212
Seneca	40	40	0	40	16,139
Steuben	385	397	0	397	120,217
Suffolk	3,056	3,204	21	3,183	1,225,112
Sullivan	183	192	0	192	81,999
Tioga	61	62	0	62	19,736
Tompkins	245	257	1	256	110,749
Ulster	430	441	4	437	166,561
Warren	87	95	0	95	33,497
Washington	119	126	3	123	53,367
Wayne	206	214	0	214	78,226
Westchester	4,492	4,680	8	4,672	3,009,855
Wyoming	65	66	0	66	26,811
Yates	33	33	0	33	7,711

*Expenditures partially estimated.

Table 12
SAFETY NET ASSISTANCE - FNP BY CASE SIZE CATEGORY
Cases, Recipients, Children, Adults and Expenditures by Local District
December 1998

Local District	One Person					Multi-Person				
	Cases	Recipients	Children	Adults	Expenditures	Cases	Recipients	Children	Adults	Expenditures
New York State	135,342	135,342	8	135,334	\$41,207,799	8,244	20,578	5,508	15,070	\$3,879,094
New York City*	101,000	101,000	0	101,000	26,827,000	7,019	17,873	5,336	12,537	3,273,000
Rest of State	34,342	34,342	8	34,334	14,380,799	1,225	2,705	172	2,533	606,094
Albany	814	814	0	814	368,635	10	21	2	19	3,933
Allegany	171	171	0	171	52,533	12	27	3	24	4,344
Broome	657	657	0	657	256,655	36	90	8	82	13,755
Cattaraugus	209	209	0	209	63,006	16	36	5	31	6,139
Cayuga	109	109	0	109	43,933	1	2	0	2	218
Chautauqua	501	501	0	501	154,929	26	54	3	51	7,663
Chemung	233	233	0	233	71,983	7	17	1	16	2,714
Chenango	56	56	0	56	15,897	4	8	0	8	1,086
Clinton	172	172	0	172	57,650	8	16	1	15	3,204
Columbia	149	149	0	149	49,588	9	18	1	17	2,652
Cortland	102	102	0	102	38,616	2	4	0	4	593
Delaware	58	58	0	58	19,925	5	11	2	9	1,344
Dutchess	501	501	1	500	198,228	20	64	1	63	13,408
Erie	6,605	6,605	0	6,605	2,340,036	222	501	41	460	81,670
Essex	89	89	0	89	29,329	2	4	0	4	575
Franklin	160	160	0	160	45,564	4	8	0	8	1,606
Fulton	139	139	0	139	44,703	2	4	0	4	485
Genesee	68	68	0	68	29,819	1	2	0	2	390
Greene	108	108	0	108	39,026	2	4	0	4	1,055
Hamilton	6	6	0	6	1,626	1	2	0	2	119
Herkimer	86	86	0	86	26,555	3	6	0	6	598
Jefferson	448	448	0	448	165,299	12	28	4	24	4,723
Lewis	53	53	0	53	18,924	4	8	0	8	1,246
Livingston	199	199	1	198	67,275	10	20	0	20	3,994
Madison	42	42	0	42	15,784	1	2	0	2	539
Monroe	5,003	5,003	2	5,001	2,011,138	165	356	28	328	75,291
Montgomery	102	102	0	102	45,375	4	10	3	7	3,101
Nassau	1,856	1,856	0	1,856	807,414	47	102	4	98	27,332
Niagara	881	881	0	881	298,984	20	43	5	38	8,364
Oneida	920	920	1	919	317,360	51	113	6	107	21,933
Onondaga	1,732	1,732	0	1,732	676,410	80	175	11	164	34,695
Ontario	201	201	0	201	85,403	7	14	0	14	2,707
Orange	816	816	0	816	389,588	18	37	3	34	9,712
Orleans	132	132	0	132	45,819	5	14	0	14	1,969
Oswego	237	237	0	237	78,185	7	14	1	13	3,574
Otsego	64	64	0	64	26,852	2	4	0	4	596
Putnam	49	49	0	49	21,964	2	4	0	4	1,166
Rensselaer	344	344	0	344	139,821	7	15	1	14	3,883
Rockland	447	447	0	447	206,203	18	37	2	35	9,832
St. Lawrence	397	397	0	397	137,478	13	29	0	29	4,338
Saratoga	84	84	0	84	38,313	2	4	0	4	956
Schenectady	227	227	0	227	102,764	10	23	2	21	3,914
Schoharie	26	26	0	26	10,450	1	2	0	2	246
Schuyler	32	32	0	32	9,738	1	2	0	2	474
Seneca	40	40	0	40	16,139	0	0	0	0	0
Steuben	374	374	0	374	116,413	11	23	0	23	3,804
Suffolk	2,936	2,936	2	2,934	1,166,593	120	268	19	249	58,519
Sullivan	176	176	0	176	78,659	7	16	0	16	3,340
Tioga	60	60	0	60	19,607	1	2	0	2	129
Tompkins	235	235	0	235	107,721	10	22	1	21	3,028
Ulster	422	422	0	422	160,432	8	19	4	15	6,129
Warren	79	79	0	79	30,805	8	16	0	16	2,692
Washington	113	113	0	113	50,944	6	13	3	10	2,423
Wayne	201	201	0	201	76,096	5	13	0	13	2,130
Westchester	4,324	4,324	1	4,323	2,858,908	168	356	7	349	150,947
Wyoming	64	64	0	64	25,994	1	2	0	2	817
Yates	33	33	0	33	7,711	0	0	0	0	0

*Expenditures partially estimated.

Table 13
SAFETY NET ASSISTANCE - FNP - CASH TOTAL
 Cases, Recipients, Children, Adults and Expenditures by Local District
 December 1998

Local District	Safety Net Assistance - FNP - Cash Total				
	Cases	Recipients	Children	Adults	Expenditures
New York State	141,090	153,391	5,507	147,884	\$43,807,893
New York City*	108,019	118,873	5,336	113,537	30,100,000
Rest of State	33,071	34,518	171	34,347	13,707,893
Albany	824	835	2	833	372,568
Allegany	183	198	3	195	56,877
Broome	683	737	8	729	263,545
Cattaraugus	223	241	5	236	68,473
Cayuga	108	109	0	109	42,983
Chautauqua	489	516	2	514	145,261
Chemung	232	242	1	241	68,922
Chenango	56	60	0	60	15,379
Clinton	168	176	1	175	55,153
Columbia	158	167	1	166	52,240
Cortland	104	106	0	106	39,209
Delaware	61	67	2	65	20,564
Dutchess	393	437	2	435	152,849
Erie	6,824	7,103	41	7,062	2,420,253
Essex	91	93	0	93	29,904
Franklin	164	168	0	168	47,170
Fulton	128	130	0	130	39,052
Genesee	64	65	0	65	26,914
Greene	105	107	0	107	33,960
Hamilton	7	8	0	8	1,745
Herkimer	86	89	0	89	25,091
Jefferson	413	429	4	425	142,751
Lewis	52	56	0	56	17,178
Livingston	205	215	1	214	68,609
Madison	39	40	0	40	13,692
Monroe	4,240	4,417	28	4,389	1,668,267
Montgomery	106	112	3	109	48,476
Nassau	1,731	1,783	4	1,779	723,129
Niagara	763	786	5	781	236,872
Oneida	772	830	6	824	238,047
Onondaga	1,780	1,874	11	1,863	692,023
Ontario	177	184	0	184	67,466
Orange	834	853	3	850	399,300
Orleans	135	144	0	144	47,370
Oswego	242	248	1	247	79,982
Otsego	56	58	0	58	16,199
Putnam	51	53	0	53	23,130
Rensselaer	275	283	1	282	99,232
Rockland	465	484	2	482	216,035
St. Lawrence	410	426	0	426	141,816
Saratoga	71	73	0	73	26,698
Schenectady	235	248	2	246	106,587
Schoharie	26	27	0	27	9,797
Schuyler	32	33	0	33	9,890
Seneca	35	35	0	35	13,032
Steuben	385	397	0	397	120,217
Suffolk	2,646	2,789	18	2,771	1,015,032
Sullivan	183	192	0	192	81,999
Tioga	56	57	0	57	16,239
Tompkins	233	244	0	244	102,526
Ulster	361	371	3	368	128,398
Warren	87	95	0	95	33,497
Washington	106	113	3	110	43,276
Wayne	185	193	0	193	61,525
Westchester	4,436	4,624	8	4,616	2,987,308
Wyoming	64	65	0	65	26,475
Yates	33	33	0	33	7,711

*Expenditures partially estimated.

Note: New York City data for Safety Net Assistance - FNP - Non-Cash is currently included in Safety Net Assistance - FNP - Cash.

Table 14
 SAFETY NET ASSISTANCE - FNP - CASH BY CASE SIZE CATEGORY
 Cases, Recipients, Children, Adults and Expenditures by Local District
 December 1998

Local District	One-Person					Multi-Person				
	Cases	Recipients	Children	Adults	Expenditures	Cases	Recipients	Children	Adults	Expenditures
New York State	132,876	132,876	8	132,868	\$39,943,509	8,214	20,515	5,499	15,016	\$3,864,384
New York City*	101,000	101,000	0	101,000	26,827,000	7,019	17,873	5,336	12,537	3,273,000
Rest of State	31,876	31,876	8	31,868	13,116,509	1,195	2,642	163	2,479	591,384
Albany	814	814	0	814	368,635	10	21	2	19	3,933
Allegany	171	171	0	171	52,533	12	27	3	24	4,344
Broome	647	647	0	647	249,790	36	90	8	82	13,755
Cattaraugus	208	208	0	208	62,719	15	33	5	28	5,754
Cayuga	107	107	0	107	42,765	1	2	0	2	218
Chautauqua	464	464	0	464	137,623	25	52	2	50	7,638
Chemung	225	225	0	225	66,208	7	17	1	16	2,714
Chenango	52	52	0	52	14,293	4	8	0	8	1,086
Clinton	160	160	0	160	51,949	8	16	1	15	3,204
Columbia	149	149	0	149	49,588	9	18	1	17	2,652
Cortland	102	102	0	102	38,616	2	4	0	4	593
Delaware	56	56	0	56	19,220	5	11	2	9	1,344
Dutchess	373	373	1	372	139,441	20	64	1	63	13,408
Erie	6,602	6,602	0	6,602	2,338,583	222	501	41	460	81,670
Essex	89	89	0	89	29,329	2	4	0	4	575
Franklin	160	160	0	160	45,564	4	8	0	8	1,606
Fulton	126	126	0	126	38,567	2	4	0	4	485
Genesee	63	63	0	63	26,524	1	2	0	2	390
Greene	103	103	0	103	32,905	2	4	0	4	1,055
Hamilton	6	6	0	6	1,626	1	2	0	2	119
Herkimer	83	83	0	83	24,493	3	6	0	6	598
Jefferson	401	401	0	401	138,028	12	28	4	24	4,723
Lewis	48	48	0	48	15,932	4	8	0	8	1,246
Livingston	195	195	1	194	64,615	10	20	0	20	3,994
Madison	38	38	0	38	13,153	1	2	0	2	539
Monroe	4,087	4,087	2	4,085	1,597,624	153	330	26	304	70,643
Montgomery	102	102	0	102	45,375	4	10	3	7	3,101
Nassau	1,687	1,687	0	1,687	698,611	44	96	4	92	24,518
Niagara	743	743	0	743	228,508	20	43	5	38	8,364
Oneida	725	725	1	724	217,236	47	105	5	100	20,811
Onondaga	1,701	1,701	0	1,701	657,781	79	173	11	162	34,242
Ontario	170	170	0	170	64,759	7	14	0	14	2,707
Orange	816	816	0	816	389,588	18	37	3	34	9,712
Orleans	130	130	0	130	45,401	5	14	0	14	1,969
Oswego	236	236	0	236	77,303	6	12	1	11	2,679
Otsego	54	54	0	54	15,603	2	4	0	4	596
Putnam	49	49	0	49	21,964	2	4	0	4	1,166
Rensselaer	268	268	0	268	95,349	7	15	1	14	3,883
Rockland	447	447	0	447	206,203	18	37	2	35	9,832
St. Lawrence	397	397	0	397	137,478	13	29	0	29	4,338
Saratoga	69	69	0	69	25,742	2	4	0	4	956
Schenectady	225	225	0	225	102,673	10	23	2	21	3,914
Schoharie	25	25	0	25	9,551	1	2	0	2	246
Schuyler	31	31	0	31	9,416	1	2	0	2	474
Seneca	35	35	0	35	13,032	0	0	0	0	0
Steuben	374	374	0	374	116,413	11	23	0	23	3,804
Suffolk	2,531	2,531	2	2,529	960,516	115	258	16	242	54,516
Sullivan	176	176	0	176	78,659	7	16	0	16	3,340
Tioga	55	55	0	55	16,110	1	2	0	2	129
Tompkins	224	224	0	224	99,818	9	20	0	20	2,708
Ulster	354	354	0	354	122,314	7	17	3	14	6,084
Warren	79	79	0	79	30,805	8	16	0	16	2,692
Washington	100	100	0	100	40,853	6	13	3	10	2,423
Wayne	180	180	0	180	59,395	5	13	0	13	2,130
Westchester	4,268	4,268	1	4,267	2,836,361	168	356	7	349	150,947
Wyoming	63	63	0	63	25,658	1	2	0	2	817
Yates	33	33	0	33	7,711	0	0	0	0	0

*Expenditures partially estimated.

Note: New York City data for Safety Net Assistance - FNP - Non-Cash is currently included in Safety Net Assistance - FNP - Cash.

Table 15
SAFETY NET ASSISTANCE - FNP - NON-CASH TOTAL
 Cases, Recipients, Children, Adults and Expenditures by Local District
 December 1998

Local District	Safety Net Assistance - FNP - Non-Cash Total				
	Cases	Recipients	Children	Adults	Expenditures
New York State	See Note	See Note	See Note	See Note	See Note
New York City*	See Note	See Note	See Note	See Note	See Note
Rest of State	2,496	2,529	9	2,520	\$1,279,000
Albany	0	0	0	0	0
Allegany	0	0	0	0	0
Broome	10	10	0	10	6,865
Cattaraugus	2	4	0	4	672
Cayuga	2	2	0	2	1,168
Chautauqua	38	39	1	38	17,331
Chemung	8	8	0	8	5,775
Chenango	4	4	0	4	1,604
Clinton	12	12	0	12	5,701
Columbia	0	0	0	0	0
Cortland	0	0	0	0	0
Delaware	2	2	0	2	705
Dutchess	128	128	0	128	58,787
Erie	3	3	0	3	1,453
Essex	0	0	0	0	0
Franklin	0	0	0	0	0
Fulton	13	13	0	13	6,136
Genesee	5	5	0	5	3,295
Greene	5	5	0	5	6,121
Hamilton	0	0	0	0	0
Herkimer	3	3	0	3	2,062
Jefferson	47	47	0	47	27,271
Lewis	5	5	0	5	2,992
Livingston	4	4	0	4	2,660
Madison	4	4	0	4	2,631
Monroe	928	942	2	940	418,162
Montgomery	0	0	0	0	0
Nassau	172	175	0	175	111,617
Niagara	138	138	0	138	70,476
Oneida	199	203	1	202	101,246
Onondaga	32	33	0	33	19,082
Ontario	31	31	0	31	20,644
Orange	0	0	0	0	0
Orleans	2	2	0	2	418
Oswego	2	3	0	3	1,777
Otsego	10	10	0	10	11,249
Putnam	0	0	0	0	0
Rensselaer	76	76	0	76	44,472
Rockland	0	0	0	0	0
St. Lawrence	0	0	0	0	0
Saratoga	15	15	0	15	12,571
Schenectady	2	2	0	2	91
Schoharie	1	1	0	1	899
Schuyler	1	1	0	1	322
Seneca	5	5	0	5	3,107
Steuben	0	0	0	0	0
Suffolk	410	415	3	412	210,080
Sullivan	0	0	0	0	0
Tioga	5	5	0	5	3,497
Tompkins	12	13	1	12	8,223
Ulster	69	70	1	69	38,163
Warren	0	0	0	0	0
Washington	13	13	0	13	10,091
Wayne	21	21	0	21	16,701
Westchester	56	56	0	56	22,547
Wyoming	1	1	0	1	336
Yates	0	0	0	0	0

*Expenditures partially estimated.

Note: New York City data for Safety Net Assistance - FNP - Non-Cash is currently included in Safety Net Assistance - FNP - Cash.

Table 16
 SAFETY NET ASSISTANCE - FNP - NON-CASH BY CASE SIZE CATEGORY
 Cases, Recipients, Children, Adults and Expenditures by Local District

December 1998

Local District	One-Person					Multi-Person				
	Cases	Recipients	Children	Adults	Expenditures	Cases	Recipients	Children	Adults	Expenditures
New York State	See Note	See Note	See Note	See Note	See Note	See Note	See Note	See Note	See Note	See Note
New York City*	See Note	See Note	See Note	See Note	See Note	See Note	See Note	See Note	See Note	See Note
Rest of State	2,466	2,466	0	2,466	\$1,264,290	30	63	9	54	\$14,710
Albany	0	0	0	0	0	0	0	0	0	0
Allegany	0	0	0	0	0	0	0	0	0	0
Broome	10	10	0	10	6,865	0	0	0	0	0
Cattaraugus	1	1	0	1	287	1	3	0	3	385
Cayuga	2	2	0	2	1,168	0	0	0	0	0
Chautauqua	37	37	0	37	17,306	1	2	1	1	25
Chemung	8	8	0	8	5,775	0	0	0	0	0
Chenango	4	4	0	4	1,604	0	0	0	0	0
Clinton	12	12	0	12	5,701	0	0	0	0	0
Columbia	0	0	0	0	0	0	0	0	0	0
Cortland	0	0	0	0	0	0	0	0	0	0
Delaware	2	2	0	2	705	0	0	0	0	0
Dutchess	128	128	0	128	58,787	0	0	0	0	0
Erie	3	3	0	3	1,453	0	0	0	0	0
Essex	0	0	0	0	0	0	0	0	0	0
Franklin	0	0	0	0	0	0	0	0	0	0
Fulton	13	13	0	13	6,136	0	0	0	0	0
Genesee	5	5	0	5	3,295	0	0	0	0	0
Greene	5	5	0	5	6,121	0	0	0	0	0
Hamilton	0	0	0	0	0	0	0	0	0	0
Herkimer	3	3	0	3	2,062	0	0	0	0	0
Jefferson	47	47	0	47	27,271	0	0	0	0	0
Lewis	5	5	0	5	2,992	0	0	0	0	0
Livingston	4	4	0	4	2,660	0	0	0	0	0
Madison	4	4	0	4	2,631	0	0	0	0	0
Monroe	916	916	0	916	413,514	12	26	2	24	4,648
Montgomery	0	0	0	0	0	0	0	0	0	0
Nassau	169	169	0	169	108,803	3	6	0	6	2,814
Niagara	138	138	0	138	70,476	0	0	0	0	0
Oneida	195	195	0	195	100,124	4	8	1	7	1,122
Onondaga	31	31	0	31	18,629	1	2	0	2	453
Ontario	31	31	0	31	20,644	0	0	0	0	0
Orange	0	0	0	0	0	0	0	0	0	0
Orleans	2	2	0	2	418	0	0	0	0	0
Oswego	1	1	0	1	882	1	2	0	2	895
Otsego	10	10	0	10	11,249	0	0	0	0	0
Putnam	0	0	0	0	0	0	0	0	0	0
Rensselaer	76	76	0	76	44,472	0	0	0	0	0
Rockland	0	0	0	0	0	0	0	0	0	0
St. Lawrence	0	0	0	0	0	0	0	0	0	0
Saratoga	15	15	0	15	12,571	0	0	0	0	0
Schenectady	2	2	0	2	91	0	0	0	0	0
Schoharie	1	1	0	1	899	0	0	0	0	0
Schuyler	1	1	0	1	322	0	0	0	0	0
Seneca	5	5	0	5	3,107	0	0	0	0	0
Steuben	0	0	0	0	0	0	0	0	0	0
Suffolk	405	405	0	405	206,077	5	10	3	7	4,003
Sullivan	0	0	0	0	0	0	0	0	0	0
Tioga	5	5	0	5	3,497	0	0	0	0	0
Tompkins	11	11	0	11	7,903	1	2	1	1	320
Ulster	68	68	0	68	38,118	1	2	1	1	45
Warren	0	0	0	0	0	0	0	0	0	0
Washington	13	13	0	13	10,091	0	0	0	0	0
Wayne	21	21	0	21	16,701	0	0	0	0	0
Westchester	56	56	0	56	22,547	0	0	0	0	0
Wyoming	1	1	0	1	336	0	0	0	0	0
Yates	0	0	0	0	0	0	0	0	0	0

*Expenditures partially estimated.

Note: New York City data for Safety Net Assistance - FNP - Non-Cash is currently included in Safety Net Assistance - FNP - Cash.

Table 17
FOOD STAMPS
Households, Persons and Value of Food Stamps Benefits by Local District
December 1998

Local District	Total			Temporary Assistance			Non-Temporary Assistance		
	Households	Persons	Food Stamps Benefits	Households	Persons	Food Stamps Benefits	Households	Persons	Food Stamps Benefits
New York State	763,927	1,567,750	\$125,435,385	568,978	1,083,120	\$90,958,601	194,949	484,630	\$34,476,784
New York City	505,619	1,011,136	86,702,176	417,525	802,298	69,329,994	88,094	208,838	17,372,182
Rest of State	258,308	556,614	38,733,209	151,453	280,822	21,628,607	106,855	275,792	17,104,602
Albany	8,116	17,215	1,229,781	4,695	8,642	677,410	3,421	8,573	552,371
Allegany	1,857	3,884	254,596	977	1,595	122,804	880	2,289	131,792
Broome	6,372	13,490	899,384	3,625	6,701	504,524	2,747	6,789	394,860
Cattaraugus	3,015	6,321	398,562	1,292	2,089	158,269	1,723	4,232	240,293
Cayuga	1,985	4,383	288,588	796	1,244	91,225	1,189	3,139	197,363
Chautauqua	5,006	10,710	737,124	2,821	4,953	406,794	2,185	5,757	330,330
Chemung	2,666	5,848	368,120	1,431	2,510	186,342	1,235	3,338	181,778
Chenango	1,589	3,662	241,034	579	1,010	78,192	1,010	2,652	162,842
Clinton	2,928	5,932	398,729	1,352	1,879	142,087	1,576	4,053	256,642
Columbia	1,425	2,880	194,072	704	1,182	94,644	721	1,698	99,428
Cortland	1,428	3,214	222,576	708	1,243	95,882	720	1,971	126,694
Delaware	1,141	2,302	142,943	474	671	46,891	667	1,631	96,052
Dutchess	3,876	7,570	546,604	2,101	3,767	304,025	1,775	3,803	242,579
Erie	40,660	84,668	6,238,302	26,149	49,046	4,105,622	14,511	35,622	2,132,680
Essex	1,085	2,160	133,118	528	784	53,884	557	1,376	79,234
Franklin	1,726	3,592	237,642	782	1,122	86,756	944	2,470	150,886
Fulton	1,692	3,623	244,568	817	1,276	97,078	875	2,347	147,490
Genesee	1,172	2,557	167,092	497	738	56,532	675	1,819	110,560
Greene	1,250	2,624	183,204	613	1,061	86,585	637	1,563	96,619
Hamilton	155	239	13,856	36	50	4,183	119	189	9,673
Herkimer	1,784	3,997	260,770	697	1,080	79,772	1,087	2,917	180,998
Jefferson	3,735	8,549	570,562	1,939	3,404	260,913	1,796	5,145	309,649
Lewis	784	1,805	118,327	305	487	35,262	479	1,318	83,065
Livingston	1,534	3,037	208,203	756	1,219	99,892	778	1,818	108,311
Madison	1,397	2,945	196,840	538	674	47,544	859	2,271	149,296
Monroe	27,242	60,516	4,152,379	20,287	40,676	3,022,571	6,955	19,840	1,129,808
Montgomery	1,676	3,804	265,716	623	939	69,287	1,053	2,865	196,429
Nassau	10,868	20,760	1,480,916	7,202	12,766	977,211	3,666	7,994	503,705
Niagara	6,655	14,166	976,273	4,028	7,593	586,931	2,627	6,573	389,342
Oneida	9,481	21,100	1,461,022	4,699	8,767	672,866	4,782	12,333	788,156
Onondaga	13,632	31,463	2,208,058	8,580	18,498	1,357,241	5,052	12,965	850,817
Ontario	1,964	3,859	252,688	958	1,588	120,475	1,006	2,271	132,213
Orange	7,680	19,930	1,457,933	3,621	7,997	620,068	4,059	11,933	837,865
Orleans	1,205	2,691	179,986	579	1,034	81,805	626	1,657	98,181
Oswego	3,359	8,475	567,898	1,458	2,714	203,201	1,901	5,761	364,697
Otsego	1,255	2,458	156,044	477	608	40,789	778	1,850	115,255
Putnam	464	762	45,126	272	356	23,764	192	406	21,362
Rensselaer	4,215	9,112	642,333	1,954	3,381	257,095	2,261	5,731	385,238
Rockland	4,681	14,838	1,061,514	2,028	4,142	263,151	2,653	10,696	798,363
St. Lawrence	3,698	8,128	525,675	2,028	3,600	264,456	1,670	4,528	261,219
Saratoga	2,593	5,272	364,145	852	1,024	71,612	1,741	4,248	292,533
Schenectady	3,709	8,166	555,794	1,816	3,265	245,495	1,893	4,901	310,299
Schoharie	723	1,505	103,474	293	410	28,266	430	1,095	75,208
Schuyler	453	974	63,285	205	346	25,587	248	628	37,698
Seneca	769	1,472	89,546	304	440	28,523	465	1,032	61,023
Steuben	3,023	6,975	460,641	1,618	2,982	233,630	1,405	3,993	227,011
Suffolk	16,855	33,890	2,359,664	10,867	19,921	1,484,652	5,988	13,969	875,012
Sullivan	2,207	4,562	291,855	1,131	1,806	133,560	1,076	2,756	158,295
Tioga	1,064	2,492	161,972	507	884	68,031	557	1,608	93,941
Tompkins	1,951	3,925	267,649	975	1,561	118,001	976	2,364	149,648
Ulster	3,930	7,526	513,834	2,150	3,409	256,333	1,780	4,117	257,501
Warren	1,523	3,106	204,733	672	1,000	68,728	851	2,106	136,005
Washington	1,446	2,968	199,843	697	1,137	86,501	749	1,831	113,242
Wayne	2,170	4,211	288,253	1,096	1,849	150,229	1,074	2,362	138,024
Westchester	18,007	37,372	2,692,338	13,742	26,948	2,088,377	4,265	10,424	603,961
Wyoming	720	1,515	100,897	279	418	31,644	441	1,097	69,253
Yates	712	1,414	87,128	243	336	25,315	469	1,078	61,813

Note: Food Stamps households containing only SSI recipients are counted as TA in accordance with Federal reporting requirements.

Note: Rest of State data does not include the following FAP data: 396 households, 524 persons, and \$38,094 in expenditures.

Table 18
SUPPLEMENTAL SECURITY INCOME
 Recipients, Total Program Expenditures, Federal and State Shares, by Local District
 December 1998

Local District	Recipients	Expenditures		
		Total	Federal	State
New York State*	613,250	\$260,691,803	\$214,676,970	\$46,014,833
New York City	384,004	169,435,648	142,911,085	26,524,563
Rest of State	217,806	87,561,043	69,375,728	18,185,315
Albany	6,449	2,663,505	2,084,913	578,592
Allegany	1,526	640,389	518,497	121,892
Broome	4,849	1,937,079	1,571,426	365,653
Cattaraugus	2,335	919,576	743,844	175,732
Cayuga	1,765	701,761	536,360	165,401
Chautauqua	3,989	1,555,234	1,248,819	306,415
Chemung	2,796	1,101,188	896,521	204,667
Chenango	1,295	462,452	384,349	78,103
Clinton	2,492	988,011	802,467	185,544
Columbia	1,531	598,326	454,497	143,829
Cortland	1,273	500,146	402,161	97,985
Delaware	1,189	444,899	343,642	101,257
Dutchess	4,284	1,730,251	1,276,691	453,560
Erie	25,709	10,757,531	8,776,246	1,981,285
Essex	905	355,959	267,427	88,532
Franklin	1,605	626,377	492,485	133,892
Fulton	1,725	637,987	505,779	132,208
Genesee	1,000	351,403	273,514	77,889
Greene	1,073	425,148	335,747	89,401
Hamilton	68	25,423	21,097	4,326
Herkimer	1,588	561,735	449,441	112,294
Jefferson	2,829	1,071,217	860,006	211,211
Lewis	626	218,650	176,096	42,554
Livingston	934	388,842	319,463	69,379
Madison	1,252	455,896	350,005	105,891
Monroe	17,052	7,450,206	6,077,204	1,373,002
Montgomery	1,388	496,835	391,093	105,742
Nassau	16,558	6,472,838	4,960,164	1,512,674
Niagara	4,909	1,943,319	1,535,190	408,129
Oneida	7,140	2,917,871	2,369,792	548,079
Onondaga	10,669	4,442,842	3,665,065	777,777
Ontario	1,481	553,058	444,679	108,379
Orange	6,003	2,438,397	1,961,984	476,413
Orleans	906	332,967	266,391	66,576
Oswego	2,794	1,063,298	880,230	183,068
Otsego	1,321	480,956	358,239	122,717
Putnam	737	290,789	206,311	84,478
Rensselaer	3,093	1,188,370	928,168	260,202
Rockland	4,235	1,724,268	1,241,123	483,145
St. Lawrence	3,729	1,470,270	1,211,715	258,555
Saratoga	2,414	878,140	692,726	185,414
Schenectady	3,499	1,437,126	1,142,814	294,312
Schoharie	720	289,121	214,681	74,440
Schuyler	484	169,690	132,167	37,523
Seneca	700	288,001	224,911	63,090
Steuben	2,841	1,140,687	942,172	198,515
Suffolk	20,947	8,433,877	6,372,946	2,060,931
Sullivan	2,593	1,057,536	758,301	299,235
Tioga	1,013	393,865	327,050	66,815
Tompkins	1,526	587,797	460,704	127,093
Ulster	4,003	1,615,666	1,272,995	342,671
Warren	1,426	546,826	444,803	102,023
Washington	1,371	516,768	405,119	111,649
Wayne	1,852	694,205	551,716	142,489
Westchester	14,215	5,730,326	4,531,365	1,198,961
Wyoming	622	236,387	189,661	46,726
Yates	478	159,756	122,756	37,000
Mental Hygiene	11,440	3,695,112	2,390,157	1,304,955

* Only NYS includes Mental Hygiene

Table 19
SUPPLEMENTAL SECURITY INCOME
 SSI Recipients by Living Arrangement and Location
 December 1998

Living Arrangement	New York State	New York City	Rest of State	Mental Hygiene
Living Alone	313,216	212,571	100,631	14
Living With Others	211,541	131,228	80,289	24
Living in Household of Another	25,849	16,327	9,521	1
Congregate Care Level I	6,863	695	607	5,561
Congregate Care Level II	34,761	13,592	20,989	180
Congregate Care Level III	347	103	244	0
Title XIX Institution	20,673	9,488	5,525	5,660
Total	613,250	384,004	217,806	11,440

Table 20
SUPPLEMENTAL SECURITY INCOME
 SSI Recipients by Living Arrangement and Category of Assistance
 December 1998

Living Arrangement	Total	Category of Assistance		
		Aged	Blind	Disabled
Living Alone	313,216	102,696	1,802	208,718
Living With Others	211,541	18,367	1,213	191,961
Living in Household of Another	25,849	10,735	156	14,958
Congregate Care Level I	6,863	531	37	6,295
Congregate Care Level II	34,761	6,088	168	28,505
Congregate Care Level III	347	1	1	345
Title XIX Institution	20,673	3,817	134	16,722
Total	613,250	142,235	3,511	467,504

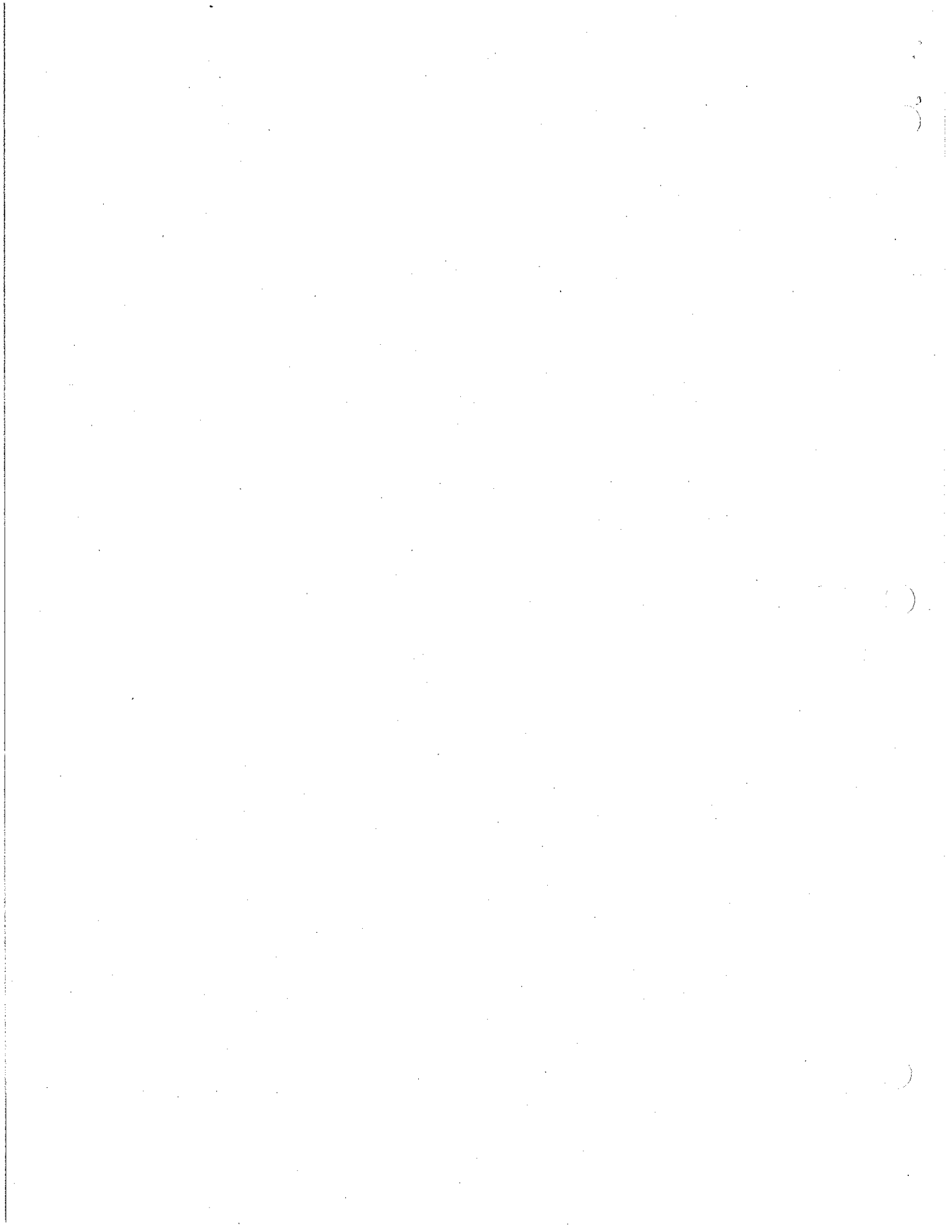
Table 21
Child Support Collections (IV-D)
December 1998

Local District	Collections from Absent Parents		
	Total	TANF	Non - TANF
New York State	\$76,182,735	\$13,243,095	\$62,939,640
New York City	27,316,781	7,228,119	20,088,662
Rest of State	48,865,954	6,014,976	42,850,978
Albany	1,388,676	139,781	1,248,895
Allegany	332,550	55,374	277,176
Broome	954,461	94,486	859,975
Cattaraugus	551,891	65,756	486,135
Cayuga	513,930	32,262	481,668
Chautauqua	901,301	119,107	782,194
Chemung	605,916	52,805	553,111
Chenango	339,148	22,441	316,707
Clinton	491,502	40,670	450,832
Columbia	308,283	32,786	275,497
Cortland	307,879	29,864	278,015
Delaware	270,396	12,748	257,648
Dutchess	1,368,843	117,243	1,251,600
Erie	3,423,270	668,924	2,754,346
Essex	244,949	29,207	215,742
Franklin	351,701	27,824	323,877
Fulton	390,481	24,835	365,646
Genesee	332,590	23,983	308,607
Greene	266,667	18,529	248,138
Hamilton	28,808	701	28,107
Herkimer	420,648	30,610	390,038
Jefferson	691,771	82,798	608,973
Lewis	164,377	7,878	156,499
Livingston	438,398	40,215	398,183
Madison	330,543	15,395	315,148
Monroe	3,405,632	772,651	2,632,981
Montgomery	362,100	35,188	326,912
Nassau	3,856,269	384,153	3,472,116
Niagara	1,193,127	222,261	970,866
Oneida	916,870	144,735	772,135
Onondaga	2,470,736	348,365	2,122,371
Ontario	588,944	51,466	537,478
Orange	1,604,190	143,232	1,460,958
Orleans	228,336	22,384	205,952
Oswego	832,861	74,236	758,625
Otsego	290,095	12,176	277,919
Putnam	320,576	15,850	304,726
Rensselaer	904,244	98,033	806,211
Rockland	1,103,526	82,436	1,021,090
St. Lawrence	615,140	79,610	535,530
Saratoga	908,863	17,950	890,913
Schenectady	785,253	71,148	714,105
Schoharie	200,906	8,811	192,095
Schuyler	98,257	3,873	94,384
Seneca	238,785	16,844	221,941
Steuben	612,553	84,945	527,608
Suffolk	5,711,816	759,412	4,952,404
Sullivan	371,365	56,595	314,770
Tioga	306,251	25,908	280,343
Tompkins	377,209	42,132	335,077
Ulster	781,960	61,245	720,715
Warren	469,814	21,028	448,786
Washington	450,243	38,032	412,211
Wayne	568,205	32,788	535,417
Westchester	2,476,754	476,970	1,999,784
Wyoming	258,440	17,558	240,882
Yates	137,655	6,739	130,916

Table 22
EMERGENCY ASSISTANCE
 Monthly Average Number of Cases and Recipients Receiving Assistance and Total Expenditures
 in the EAF and EAA Programs by Local District
 October - December 1998

Local District	Emergency Assistance to Families					Emergency Assistance to Adults				
	Monthly Average				Quarterly Expenditures	Monthly Average				Quarterly Expenditures
	Cases	Recipients	Children	Adults		Cases	Recipients	Children	Adults	
New York State	12,133	33,238	19,129	14,109	\$16,284,841	1,894	2,226	307	1,919	\$1,896,452
New York City*	8,401	24,171	14,300	9,871	12,007,435	499	594	87	507	533,828
Rest of State	3,732	9,067	4,829	4,238	4,277,406	1,395	1,632	220	1,412	1,362,624
Albany	78	176	88	88	176,964	34	38	5	33	39,090
Allegany	8	31	17	14	9,146	7	7	0	7	7,636
Broome	13	20	6	14	10,768	4	3	0	3	3,258
Cattaraugus	49	164	95	69	56,002	19	22	3	19	14,854
Cayuga	20	65	36	29	24,506	0	0	0	0	0
Chautauqua	39	132	73	59	67,952	24	31	4	27	24,166
Chemung	23	82	45	37	49,286	7	7	0	7	3,804
Chenango	12	32	15	17	13,516	1	1	0	1	652
Clinton	30	90	46	44	35,320	11	12	0	12	9,815
Columbia	6	16	8	8	5,560	2	3	0	3	2,493
Cortland	15	56	33	23	20,237	3	5	1	4	2,762
Delaware	27	103	58	45	40,381	6	6	0	6	7,033
Dutchess	29	78	42	36	42,958	15	15	0	15	29,825
Erie	58	180	107	73	77,135	106	107	4	103	93,799
Essex	5	14	7	7	3,018	1	2	0	2	876
Franklin	10	28	15	13	9,109	3	3	0	3	1,838
Fulton	13	45	26	19	17,911	5	4	0	4	5,344
Genesee	10	33	17	16	9,113	1	1	0	1	818
Greene	15	47	26	21	15,576	14	31	12	19	14,855
Hamilton	1	1	0	1	157	0	0	0	0	0
Herkimer	16	62	37	25	17,581	4	4	1	3	3,642
Jefferson	33	78	38	40	50,417	14	12	1	11	12,009
Lewis	3	10	5	5	2,961	1	1	0	1	56
Livingston	52	166	96	70	67,447	9	13	3	10	10,350
Madison	21	64	36	28	34,853	1	1	0	1	779
Monroe	62	149	100	49	96,036	86	90	5	85	134,483
Montgomery	16	50	29	21	17,328	3	3	0	3	3,309
Nassau	106	345	212	133	320,554	88	125	30	95	133,736
Niagara	18	59	37	22	33,548	5	5	1	4	5,970
Oneida	40	119	73	46	53,454	17	19	1	18	10,800
Onondaga	1,438	2,091	615	1,476	817,395	248	246	6	240	84,613
Ontario	12	38	22	16	13,372	3	3	0	3	2,180
Orange	12	34	19	15	19,420	65	30	2	28	101,931
Orleans	25	90	51	39	50,564	3	3	0	3	1,857
Oswego	22	79	50	29	28,962	3	5	2	3	2,638
Otsego	17	50	29	21	23,656	1	1	0	1	930
Putnam	5	13	7	6	14,893	5	7	2	5	8,529
Rensselaer	21	64	38	26	38,097	7	7	0	7	10,110
Rockland	22	64	39	25	113,951	54	92	32	60	62,422
St. Lawrence	28	66	25	41	28,795	4	4	0	4	4,311
Saratoga	33	101	57	44	59,209	4	9	4	5	4,241
Schenectady	47	154	91	63	76,218	87	105	6	99	74,341
Schoharie	14	34	17	17	18,647	2	3	1	2	3,077
Schuyler	7	24	12	12	7,440	1	1	0	1	488
Seneca	4	14	9	5	5,554	0	0	0	0	0
Steuben	13	42	25	17	49,793	1	1	0	1	783
Suffolk	272	927	570	357	451,313	313	404	60	344	258,129
Sullivan	4	11	6	5	9,643	9	14	3	11	8,663
Tioga	13	38	21	17	15,199	1	2	0	2	1,667
Tompkins	41	112	59	53	69,989	12	12	0	12	12,921
Ulster	23	57	29	28	28,868	6	7	2	5	5,420
Warren	7	23	12	11	9,104	1	1	0	1	1,169
Washington	9	34	19	15	10,330	3	3	0	3	2,543
Wayne	8	20	10	10	9,561	1	1	0	1	502
Westchester	791	2,331	1,540	791	909,765	70	100	29	71	131,107
Wyoming	9	32	18	14	11,144	0	0	0	0	0
Yates	7	29	16	13	7,730	0	0	0	0	0

* NYC caseload estimated.



1998 Summary

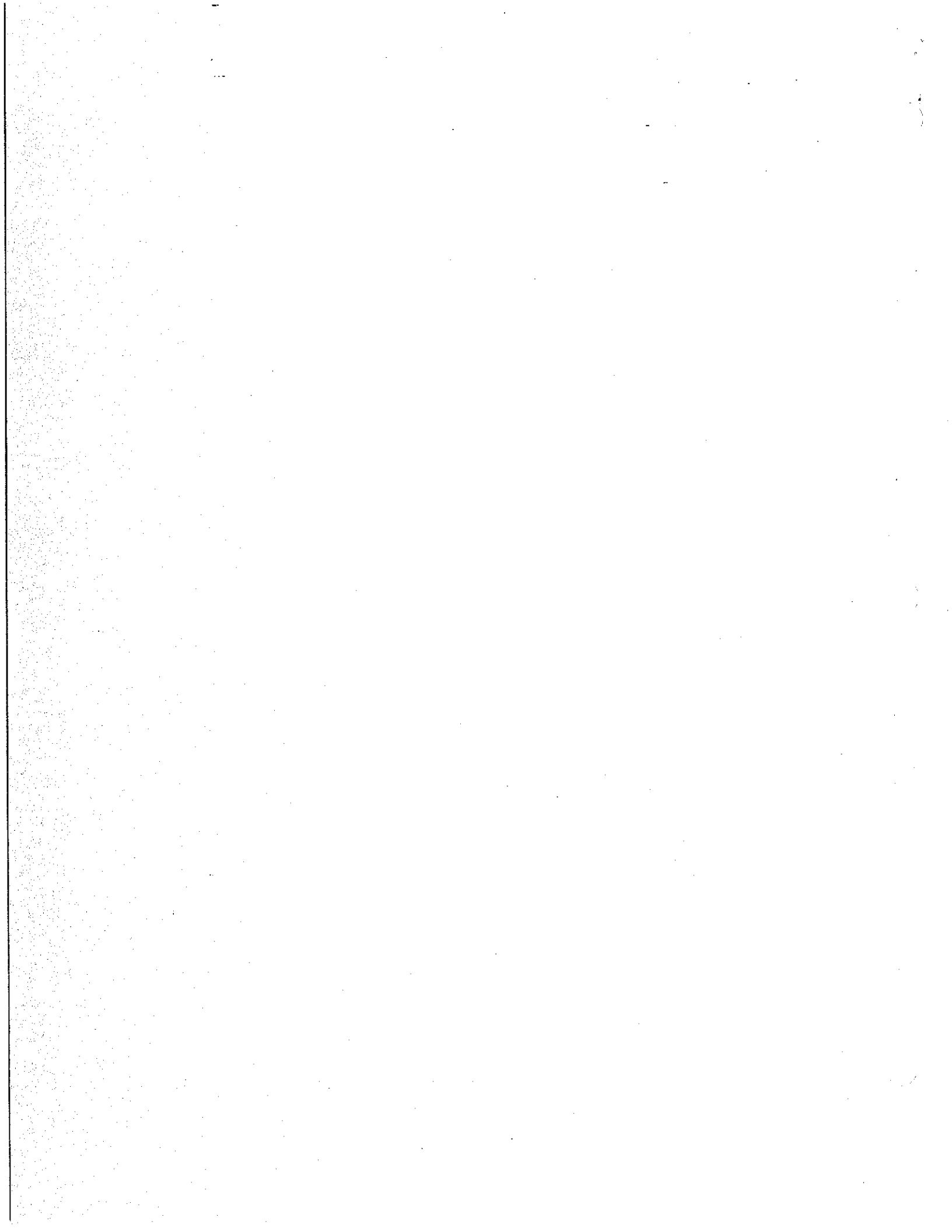


Table A-1

Comparison of Monthly Average Cases and Recipients, and Annual Expenditures for 1997 and 1998

1998 SUMMARY

Program	1998	1997	Actual Change	Percent Change
New York State				(%)
Temporary Assistance/Public Assistance				
Cases	487,951	562,156	(74,205)	(13.20)
Recipients	1,076,135	1,243,071	(166,936)	(13.43)
Expenditures	\$ 2,651,154,279	\$ 3,043,745,032	(\$392,590,753)	(12.90)
Supplemental Security Income				
Recipients	597,652	588,308	9,344	1.59
Expenditures	\$ 3,067,884,684	\$ 2,913,059,334	\$154,825,350	5.31
Food Stamps				
Cases	796,391	875,008	(78,617)	(8.98)
Recipients	1,643,820	1,849,889	(206,069)	(11.14)
Expenditures	\$ 1,527,384,693	\$ 1,703,232,408	(\$175,847,715)	(10.32)
New York City				
Temporary Assistance/Public Assistance				
Cases	351,252	402,927	(51,675)	(12.82)
Recipients	759,662	873,573	(113,911)	(13.04)
Expenditures	\$ 1,796,498,000	\$ 2,055,320,000	(\$258,822,000)	(12.59)
Supplemental Security Income				
Recipients	380,066	372,942	7,124	1.91
Expenditures	\$ 2,022,085,845	\$ 1,913,341,264	\$108,744,581	5.68
Food Stamps				
Cases	526,851	574,091	(47,240)	(8.23)
Recipients	1,058,745	1,189,200	(130,455)	(10.97)
Expenditures	\$ 1,048,628,624	\$ 1,157,119,073	(\$108,490,449)	(9.38)
Rest of State				
Temporary Assistance/Public Assistance				
Cases	136,699	159,229	(22,530)	(14.15)
Recipients	316,473	369,498	(53,025)	(14.35)
Expenditures	\$ 854,656,279	\$ 988,425,032	(\$133,768,753)	(13.53)
Supplemental Security Income				
Recipients	217,586	215,366	2,220	1.03
Expenditures	\$ 1,045,798,839	\$ 999,718,070	\$46,080,769	4.61
Food Stamps				
Cases	269,540	300,917	(31,377)	(10.43)
Recipients	585,075	660,689	(75,614)	(11.44)
Expenditures	\$ 478,756,069	\$ 546,113,335	(\$67,357,266)	(12.33)

Table A-2
TEMPORARY ASSISTANCE
 Year to Year Monthly Comparison by Local District
 Monthly Average Cases and Recipients, and Annual Expenditures
 1998 SUMMARY

Local District	1998			1997			Percentage Change		
	Cases	Recipients	Expenditures	Cases	Recipients	Expenditures	Cases (%)	Recipients (%)	Expenditures (%)
New York State	487,951	1,076,135	\$2,651,154,279	562,156	1,243,071	\$ 3,043,745,032	(13.20)	(13.43)	(12.90)
New York City*	351,252	759,662	1,796,498,000	402,927	873,573	2,055,320,000	(12.82)	(13.04)	(12.59)
Rest of State	136,699	316,473	854,656,279	159,229	369,498	988,425,032	(14.15)	(14.35)	(13.53)
Albany	4,110	9,824	30,449,216	4,557	11,008	31,221,046	(9.81)	(10.76)	(2.47)
Allegany	921	2,215	4,443,399	1,109	2,668	5,491,319	(16.95)	(16.98)	(19.08)
Broome	3,151	7,425	17,777,797	3,910	9,044	22,018,124	(19.41)	(17.90)	(19.26)
Cattaraugus	975	2,225	4,562,964	1,204	2,782	5,668,671	(19.02)	(20.02)	(19.51)
Cayuga	581	1,337	2,875,449	743	1,685	3,680,517	(21.80)	(20.65)	(21.87)
Chautauqua	2,574	6,092	13,657,441	3,102	7,300	16,402,146	(17.02)	(16.55)	(16.73)
Chemung	1,359	3,175	6,513,880	1,651	3,859	8,304,622	(17.69)	(17.72)	(21.56)
Chenango	414	1,034	1,959,323	541	1,322	2,581,985	(23.48)	(21.79)	(24.12)
Clinton	855	1,788	3,812,933	1,037	2,208	4,765,369	(17.55)	(19.02)	(19.99)
Columbia	649	1,429	3,137,519	798	1,752	4,041,234	(18.67)	(18.44)	(22.36)
Cortland	544	1,346	3,162,355	695	1,697	4,171,625	(21.73)	(20.68)	(24.19)
Delaware	252	536	1,252,182	385	906	1,908,992	(34.55)	(40.84)	(34.41)
Dutchess	2,116	4,629	12,448,137	2,501	5,545	14,498,223	(15.39)	(16.52)	(14.14)
Erie	23,063	52,316	118,183,201	25,083	56,645	131,709,230	(8.05)	(7.64)	(10.27)
Essex	394	845	1,737,883	530	1,105	2,442,727	(25.66)	(23.53)	(28.85)
Franklin	668	1,403	2,817,696	869	1,857	3,862,167	(23.13)	(24.45)	(27.04)
Fulton	621	1,395	2,883,608	850	1,925	3,913,294	(26.94)	(27.53)	(26.31)
Genesee	327	769	1,794,162	413	997	2,289,061	(20.82)	(22.87)	(21.62)
Greene	558	1,260	2,846,903	668	1,526	3,494,496	(16.47)	(17.43)	(18.53)
Hamilton	26	44	115,127	25	49	148,872	4.00	(10.20)	(22.67)
Herkimer	444	1,043	2,076,416	553	1,339	2,683,758	(19.71)	(22.11)	(22.63)
Jefferson	1,735	3,895	9,190,646	1,997	4,545	10,845,927	(13.12)	(14.30)	(15.26)
Lewis	200	454	868,468	270	621	1,095,342	(25.93)	(26.89)	(20.71)
Livingston	637	1,292	3,256,602	786	1,627	4,027,159	(18.96)	(20.59)	(19.13)
Madison	236	488	1,176,471	341	769	1,782,633	(30.79)	(36.54)	(34.00)
Monroe	19,659	46,273	138,113,172	21,669	50,574	149,920,893	(9.28)	(8.50)	(7.88)
Montgomery	405	931	2,033,895	554	1,379	2,849,247	(26.90)	(32.49)	(28.62)
Nassau	7,077	15,015	47,297,234	8,610	18,314	59,396,427	(17.80)	(18.01)	(20.37)
Niagara	3,711	8,160	18,713,564	4,308	9,438	21,620,740	(13.86)	(13.54)	(13.45)
Oneida	3,590	9,122	20,041,640	3,851	9,698	21,088,949	(6.78)	(5.94)	(4.97)
Onondaga	8,365	20,577	50,926,917	10,007	24,544	60,382,747	(16.41)	(16.16)	(15.66)
Ontario	772	1,699	4,045,050	1,022	2,198	5,398,256	(24.46)	(22.70)	(25.07)
Orange	3,595	9,702	23,259,596	4,279	11,511	27,977,008	(15.99)	(15.72)	(16.86)
Orleans	522	1,149	2,758,022	628	1,398	3,287,956	(16.88)	(17.81)	(16.12)
Oswego	1,370	3,283	6,742,313	1,895	4,647	9,720,310	(27.70)	(29.35)	(30.64)
Otsego	221	478	1,071,467	305	713	1,567,875	(27.54)	(32.96)	(31.66)
Putnam	161	296	1,162,439	241	438	1,627,139	(33.20)	(32.42)	(28.56)
Rensselaer	1,617	3,840	8,816,835	1,960	4,549	10,781,900	(17.50)	(15.59)	(18.23)
Rockland	1,775	4,992	12,766,164	2,103	5,834	14,362,332	(15.60)	(14.43)	(11.11)
St. Lawrence	1,858	4,100	8,650,245	2,398	5,317	11,406,984	(22.52)	(22.89)	(24.17)
Saratoga	388	748	2,014,557	572	1,282	2,929,568	(32.17)	(41.65)	(31.23)
Schenectady	1,511	3,812	8,958,391	1,981	5,037	11,880,571	(23.73)	(24.32)	(24.60)
Schoharie	171	350	886,424	245	537	1,339,697	(30.20)	(34.82)	(33.83)
Schuyler	151	330	703,162	169	363	789,272	(10.65)	(9.09)	(10.91)
Seneca	203	465	993,681	303	703	1,542,740	(33.00)	(33.85)	(35.59)
Steuben	1,571	3,670	7,355,551	1,943	4,444	9,310,453	(19.15)	(17.42)	(21.00)
Suffolk	10,506	24,071	83,504,732	12,779	29,952	98,019,290	(17.79)	(19.63)	(14.81)
Sullivan	830	1,992	4,293,791	1,005	2,523	5,324,524	(17.41)	(21.05)	(19.36)
Tioga	472	1,088	2,247,225	621	1,444	3,152,308	(23.99)	(24.65)	(28.71)
Tompkins	835	1,697	4,472,351	983	1,984	5,164,620	(15.06)	(14.47)	(13.40)
Ulster	1,899	4,124	11,516,292	2,269	5,135	13,562,554	(16.31)	(19.69)	(15.09)
Warren	292	627	1,553,264	349	752	1,829,633	(16.33)	(16.62)	(15.11)
Washington	618	1,335	3,200,780	836	1,830	4,495,486	(26.08)	(27.05)	(28.80)
Wayne	866	2,014	4,520,710	1,238	2,850	6,777,564	(30.05)	(29.33)	(33.30)
Westchester	13,939	31,592	117,497,272	14,990	34,308	125,462,427	(7.01)	(7.92)	(6.35)
Wyoming	215	438	977,631	311	650	1,563,864	(30.87)	(32.62)	(37.49)
Yates	124	244	562,134	187	371	843,159	(33.69)	(34.23)	(33.33)

* Expenditures partially estimated.

Note: Prior to January 1998, "Temporary Assistance" was known as "Public Assistance".

Table A-3
FOOD STAMPS
 Year to Year Monthly Comparison by Local District
 Monthly Average Households and Persons, and Annual Expenditures
 1998 SUMMARY

Local District	1998			1997			Percentage Change		
	Cases	Recipients	Expenditures	Cases	Recipients	Expenditures	Cases (%)	Recipients (%)	Expenditures (%)
New York State	796,391	1,643,820	\$1,527,384,693	875,008	1,849,889	\$ 1,703,232,408	(8.98)	(11.14)	(10.32)
New York City	526,851	1,058,745	1,048,628,624	574,091	1,189,200	1,157,119,073	(8.23)	(10.97)	(9.38)
Rest of State	269,540	585,075	478,756,069	300,917	660,689	546,113,335	(10.43)	(11.44)	(12.33)
Albany	8,522	18,381	15,438,918	9,319	20,155	17,153,049	(8.55)	(8.80)	(9.99)
Allegany	2,096	4,641	3,505,961	2,359	5,359	4,149,418	(11.15)	(13.40)	(15.51)
Broome	6,649	13,926	10,956,686	7,613	16,316	13,063,567	(12.66)	(14.65)	(16.13)
Cattaraugus	3,084	6,536	4,909,206	3,299	7,146	5,390,149	(6.52)	(8.54)	(8.92)
Cayuga	2,107	4,765	3,682,648	2,410	5,639	4,354,771	(12.57)	(15.50)	(15.43)
Chautauqua	5,408	11,868	9,363,052	6,064	13,529	10,728,571	(10.82)	(12.28)	(12.73)
Chemung	2,853	6,383	4,841,499	3,260	7,352	5,706,995	(12.48)	(13.18)	(15.17)
Chenango	1,656	3,904	3,008,784	1,787	4,239	3,306,818	(7.33)	(7.90)	(9.01)
Clinton	3,032	6,189	5,025,407	3,306	6,943	5,487,306	(8.29)	(10.86)	(8.42)
Columbia	1,527	3,123	2,558,503	1,725	3,651	3,006,575	(11.48)	(14.46)	(14.90)
Cortland	1,424	3,200	2,609,185	1,666	3,737	3,086,890	(14.53)	(14.37)	(15.48)
Delaware	1,165	2,396	1,767,360	1,347	2,906	2,176,179	(13.51)	(17.55)	(18.79)
Dutchess	4,132	8,327	6,980,944	4,763	9,839	8,352,418	(13.25)	(15.37)	(16.42)
Erie	42,273	88,059	76,170,688	45,088	94,391	82,384,927	(6.24)	(6.71)	(7.54)
Essex	1,157	2,402	1,740,989	1,337	2,904	2,137,220	(13.46)	(17.29)	(18.54)
Franklin	1,869	3,929	3,153,176	2,118	4,601	3,711,111	(11.76)	(14.61)	(15.03)
Fulton	1,864	4,075	3,310,809	2,162	4,813	3,989,333	(13.78)	(15.33)	(17.01)
Genesee	1,206	2,604	2,007,189	1,315	2,924	2,249,076	(8.29)	(10.94)	(10.75)
Greene	1,306	2,808	2,281,050	1,403	3,048	2,589,381	(6.91)	(7.87)	(11.91)
Hamilton	157	257	167,504	163	271	173,465	(3.68)	(5.17)	(3.44)
Herkimer	1,809	4,062	3,114,113	1,971	4,505	3,471,162	(8.22)	(9.83)	(10.29)
Jefferson	3,774	8,772	6,964,136	4,132	9,631	7,564,776	(8.66)	(8.92)	(7.94)
Lewis	774	1,784	1,383,980	832	1,978	1,543,260	(6.97)	(9.81)	(10.32)
Livingston	1,575	3,189	2,528,761	1,773	3,711	2,998,222	(11.17)	(14.07)	(15.66)
Madison	1,447	3,061	2,410,713	1,582	3,453	2,720,629	(8.53)	(11.35)	(11.39)
Monroe	28,226	62,588	50,419,895	30,787	68,347	56,271,454	(8.32)	(8.43)	(10.40)
Montgomery	1,776	4,081	3,380,731	1,950	4,586	3,822,986	(8.92)	(11.01)	(11.57)
Nassau	11,135	21,537	17,992,626	13,170	25,859	21,920,615	(15.45)	(16.71)	(17.92)
Niagara	6,966	14,813	12,106,139	7,858	16,803	13,791,514	(11.35)	(11.84)	(12.22)
Oneida	9,740	21,722	17,897,549	10,481	23,421	19,350,814	(7.07)	(7.25)	(7.51)
Onondaga	14,526	33,709	28,462,610	16,605	38,545	32,519,038	(12.52)	(12.55)	(12.47)
Ontario	2,047	4,106	3,178,565	2,367	4,803	3,845,813	(13.52)	(14.51)	(17.35)
Orange	8,030	20,740	17,740,891	9,113	23,428	20,132,294	(11.88)	(11.47)	(11.88)
Orleans	1,207	2,683	2,091,853	1,312	2,939	2,300,581	(8.00)	(8.71)	(9.07)
Oswego	3,498	8,731	7,030,620	3,967	10,074	8,287,212	(11.82)	(13.33)	(15.16)
Otsego	1,322	2,650	1,995,668	1,460	3,089	2,358,345	(9.45)	(14.21)	(15.38)
Putnam	481	833	593,729	609	1,064	802,193	(21.02)	(21.71)	(25.99)
Rensselaer	4,482	9,774	8,151,578	5,074	11,154	9,542,324	(11.67)	(12.37)	(14.57)
Rockland	4,636	14,771	12,321,658	5,135	15,918	13,286,324	(9.72)	(7.21)	(7.26)
St. Lawrence	3,985	8,831	6,797,207	4,676	10,639	8,327,646	(14.78)	(16.99)	(18.38)
Saratoga	2,739	5,622	4,575,215	3,010	6,416	5,137,233	(9.00)	(12.38)	(10.94)
Schenectady	3,943	8,745	6,985,048	4,591	10,203	8,404,009	(14.11)	(14.29)	(16.88)
Schoharie	759	1,593	1,248,363	851	1,900	1,462,390	(10.81)	(16.16)	(14.64)
Schuyler	443	956	736,898	475	1,072	845,604	(6.74)	(10.82)	(12.86)
Seneca	805	1,564	1,090,766	911	1,824	1,333,488	(11.64)	(14.25)	(18.20)
Steuben	3,255	7,650	5,979,553	3,671	8,757	6,988,199	(11.33)	(12.64)	(14.43)
Suffolk	17,723	36,433	29,275,151	20,903	43,939	35,827,411	(15.21)	(17.08)	(18.29)
Sullivan	2,294	4,816	3,592,962	2,561	5,449	4,194,754	(10.43)	(11.62)	(14.35)
Tioga	1,160	2,761	2,091,835	1,332	3,247	2,524,879	(12.91)	(14.97)	(17.15)
Tompkins	2,013	4,100	3,300,615	2,193	4,556	3,702,322	(8.21)	(10.01)	(10.85)
Ulster	4,291	8,444	6,592,252	4,892	10,130	7,891,063	(12.29)	(16.64)	(16.46)
Warren	1,567	3,180	2,423,269	1,733	3,707	2,870,602	(9.58)	(14.22)	(15.58)
Washington	1,499	3,129	2,460,504	1,691	3,714	3,008,620	(11.35)	(15.75)	(18.22)
Wayne	2,263	4,480	3,513,610	2,579	5,274	4,199,032	(12.25)	(15.05)	(16.32)
Westchester	18,376	38,336	32,554,445	20,492	43,259	36,987,959	(10.33)	(11.38)	(11.99)
Wyoming	759	1,593	1,229,636	871	1,878	1,442,006	(12.86)	(15.18)	(14.73)
Yates	728	1,463	1,063,367	803	1,654	1,239,343	(9.34)	(11.55)	(14.20)

Table A-4
SUPPLEMENTAL SECURITY INCOME
 Year to Year Monthly Comparison by Local District
 Monthly Average Recipients, and Annual Expenditures
 1998 SUMMARY

Local District	1998		1997		Percentage Change	
	Recipients	Expenditures	Recipients	Expenditures	Recipients (%)	Expenditures (%)
New York State	609,197	\$ 3,112,325,501	600,077	\$ 2,957,098,906	1.52	5.25
New York City	380,066	2,022,085,845	372,942	1,913,341,264	1.91	5.68
Rest of State	217,586	1,045,798,839	215,366	999,718,070	1.03	4.61
Albany	6,335	31,234,426	6,138	29,660,395	3.21	5.31
Allegany	1,519	7,475,090	1,487	7,092,030	2.15	5.40
Broome	4,824	23,253,209	4,752	21,886,012	1.52	6.25
Cattaraugus	2,342	11,253,102	2,315	10,589,203	1.17	6.27
Cayuga	1,774	8,378,362	1,790	8,045,037	(0.89)	4.14
Chautauqua	4,033	19,444,795	4,064	19,177,007	(0.76)	1.40
Chemung	2,785	13,097,867	2,724	12,501,357	2.24	4.77
Chenango	1,288	5,592,926	1,262	5,361,091	2.06	4.32
Clinton	2,500	11,596,747	2,462	11,154,919	1.54	3.96
Columbia	1,506	7,057,355	1,469	6,458,501	2.52	9.27
Cortland	1,269	5,892,133	1,279	5,655,905	(0.78)	4.18
Delaware	1,181	5,180,837	1,181	4,999,477	0.00	3.63
Dutchess	4,323	20,818,983	4,248	19,809,686	1.77	5.09
Erie	25,637	128,803,375	25,334	123,291,771	1.20	4.47
Essex	906	4,049,024	882	3,728,082	2.72	8.61
Franklin	1,590	7,332,800	1,572	6,869,012	1.15	6.75
Fulton	1,728	7,563,779	1,734	7,598,345	(0.35)	(0.45)
Genesee	992	4,464,360	989	4,261,360	0.30	4.76
Greene	1,059	5,067,335	1,032	4,575,098	2.62	10.76
Hamilton	73	263,627	77	265,597	(5.19)	(0.74)
Herkimer	1,589	6,883,578	1,603	6,827,423	(0.87)	0.82
Jefferson	2,849	13,207,555	2,879	12,998,192	(1.04)	1.61
Lewis	632	2,771,752	641	2,777,998	(1.40)	(0.22)
Livingston	933	4,331,546	919	4,124,929	1.52	5.01
Madison	1,274	5,653,625	1,266	5,449,545	0.63	3.74
Monroe	17,021	86,898,268	16,891	82,646,546	0.77	5.14
Montgomery	1,371	5,846,575	1,338	5,560,059	2.47	5.15
Nassau	16,537	77,489,908	16,378	74,180,583	0.97	4.46
Niagara	4,923	23,636,644	4,826	22,495,492	2.01	5.07
Oneida	7,099	34,024,551	7,005	32,130,757	1.34	5.89
Onondaga	10,575	52,193,575	10,379	48,871,813	1.89	6.80
Ontario	1,460	6,922,059	1,436	6,444,259	1.67	7.41
Orange	6,005	28,705,018	5,892	27,240,399	1.92	5.38
Orleans	897	4,043,801	910	3,991,068	(1.43)	1.32
Oswego	2,779	13,069,505	2,723	12,444,614	2.06	5.02
Otsego	1,348	5,895,441	1,347	5,759,317	0.07	2.36
Putnam	735	3,534,960	721	3,341,468	1.94	5.79
Rensselaer	3,124	14,702,219	3,097	14,209,787	0.87	3.47
Rockland	4,286	21,064,378	4,296	20,376,569	(0.23)	3.38
St. Lawrence	3,730	17,587,341	3,691	16,815,203	1.06	4.59
Saratoga	2,380	10,455,593	2,368	10,046,425	0.51	4.07
Schenectady	3,509	16,910,312	3,468	16,352,720	1.18	3.41
Schoharie	718	3,149,115	720	3,128,002	(0.28)	0.67
Schuyler	482	2,282,255	440	1,956,626	9.55	16.64
Seneca	688	3,158,755	671	2,949,302	2.53	7.10
Steuben	2,829	13,610,900	2,783	12,867,691	1.65	5.78
Suffolk	20,953	101,396,957	20,709	97,058,452	1.18	4.47
Sullivan	2,590	12,426,179	2,651	12,469,620	(2.30)	(0.35)
Tioga	1,024	4,921,630	983	4,453,949	4.17	10.50
Tompkins	1,522	7,232,016	1,508	6,830,926	0.93	5.87
Ulster	4,038	19,296,945	4,040	18,870,298	(0.05)	2.26
Warren	1,405	6,193,226	1,398	5,871,594	0.50	5.48
Washington	1,352	6,139,004	1,328	5,768,224	1.81	6.43
Wayne	1,817	8,618,648	1,771	7,884,262	2.80	9.31
Westchester	14,316	68,604,657	14,344	66,514,191	(0.20)	3.14
Wyoming	636	2,864,285	651	2,832,865	(2.30)	1.11
Yates	496	2,255,931	504	2,197,017	(1.59)	2.68
Mental Hygiene	11,545	44,440,817	11,769	44,039,572	(1.90)	0.91

Note: Only New York State includes Mental Hygiene.

Table A-5
TEMPORARY ASSISTANCE
 Monthly Average Cases, Recipients, Children and Adults, and Annual Expenditures
 by Local District
 1998 SUMMARY

Local District	Temporary Assistance				Total Expenditures
	Monthly Average				
	Cases	Recipients	Children	Adults	
New York State	487,951	1,076,135	613,016	463,119	\$2,651,154,279
New York City*	351,252	759,662	422,737	336,925	1,796,498,000
Rest of State	136,699	316,473	190,279	126,194	854,656,279
Albany	4,110	9,824	6,064	3,760	30,449,216
Allegany	921	2,215	1,262	953	4,443,399
Broome	3,151	7,425	4,391	3,034	17,777,797
Cattaraugus	975	2,225	1,320	905	4,562,964
Cayuga	581	1,337	840	497	2,875,449
Chautauqua	2,574	6,092	3,647	2,445	13,657,441
Chemung	1,359	3,175	1,986	1,189	6,513,880
Chenango	414	1,034	631	403	1,959,323
Clinton	855	1,788	1,028	760	3,812,933
Columbia	649	1,429	830	599	3,137,519
Cortland	544	1,346	809	537	3,162,355
Delaware	252	536	333	203	1,252,182
Dutchess	2,116	4,629	2,825	1,804	12,448,137
Erie	23,063	52,316	30,155	22,161	118,183,201
Essex	394	845	446	399	1,737,883
Franklin	668	1,403	766	637	2,817,696
Fulton	621	1,395	803	592	2,883,608
Genesee	327	769	488	281	1,794,162
Greene	558	1,260	741	519	2,846,903
Hamilton	26	44	21	23	115,127
Herkimer	444	1,043	648	395	2,076,416
Jefferson	1,735	3,895	2,122	1,773	9,190,646
Lewis	200	454	261	193	868,468
Livingston	637	1,292	676	616	3,256,602
Madison	236	488	332	156	1,176,471
Monroe	19,659	46,273	28,074	18,199	138,113,172
Montgomery	405	931	562	369	2,033,895
Nassau	7,077	15,015	9,329	5,686	47,297,234
Niagara	3,711	8,160	4,733	3,427	18,713,564
Oneida	3,590	9,122	5,644	3,478	20,041,640
Onondaga	8,365	20,577	12,855	7,722	50,926,917
Ontario	772	1,699	980	719	4,045,050
Orange	3,595	9,702	6,456	3,246	23,259,596
Orleans	522	1,149	682	467	2,758,022
Oswego	1,370	3,283	2,045	1,238	6,742,313
Otsego	221	478	302	176	1,071,467
Putnam	161	296	160	136	1,162,439
Rensselaer	1,617	3,840	2,304	1,536	8,816,835
Rockland	1,775	4,992	3,433	1,559	12,766,164
St. Lawrence	1,858	4,100	2,277	1,823	8,650,245
Saratoga	388	748	499	249	2,014,557
Schenectady	1,511	3,812	2,526	1,286	8,958,391
Schoharie	171	350	204	146	886,424
Schuyler	151	330	185	145	703,162
Seneca	203	465	290	175	993,681
Steuben	1,571	3,670	2,001	1,669	7,355,551
Suffolk	10,506	24,071	14,995	9,076	83,504,732
Sullivan	830	1,992	1,287	705	4,293,791
Tioga	472	1,088	662	426	2,247,225
Tompkins	835	1,697	933	764	4,472,351
Ulster	1,899	4,124	2,546	1,578	11,516,292
Warren	292	627	365	262	1,553,264
Washington	618	1,335	757	578	3,200,780
Wayne	866	2,014	1,230	784	4,520,710
Westchester	13,939	31,592	18,165	13,427	117,497,272
Wyoming	215	438	238	200	977,631
Yates	124	244	135	109	562,134

* Expenditures partially estimated.

Table A-6

FAMILY ASSISTANCE

Monthly Average Cases, Recipients, Children and Adults, and Annual Expenditures
by Local District
1998 SUMMARY

Local District	Family Assistance				Total Expenditures
	Monthly Average				
	Cases	Recipients	Children	Adults	
New York State	323,723	883,469	593,381	290,088	\$2,006,284,595
New York City*	225,651	609,126	405,032	204,094	1,340,545,000
Rest of State	98,072	274,343	188,349	85,994	665,739,595
Albany	3,158	8,831	6,039	2,792	24,812,202
Allegany	696	1,972	1,258	714	3,640,901
Broome	2,277	6,445	4,360	2,085	13,820,899
Cattaraugus	733	1,956	1,310	646	3,662,047
Cayuga	480	1,230	837	393	2,411,486
Chautauqua	1,964	5,431	3,621	1,810	11,493,154
Chemung	1,072	2,860	1,972	888	5,383,556
Chenango	320	926	623	303	1,635,513
Clinton	626	1,540	1,018	522	2,949,828
Columbia	463	1,230	826	404	2,390,232
Cortland	421	1,212	801	411	2,621,206
Delaware	191	468	330	138	994,854
Dutchess	1,538	3,981	2,786	1,195	9,629,124
Erie	15,792	44,463	29,858	14,605	88,619,450
Essex	262	702	440	262	1,258,890
Franklin	451	1,164	754	410	2,084,412
Fulton	442	1,206	798	408	2,211,873
Genesee	244	682	484	198	1,426,067
Greene	420	1,108	733	375	2,263,225
Hamilton	16	33	21	12	73,523
Herkimer	338	928	643	285	1,662,806
Jefferson	1,256	3,366	2,095	1,271	7,229,990
Lewis	137	383	256	127	634,670
Livingston	423	1,054	661	393	2,346,763
Madison	189	438	330	108	953,052
Monroe	13,985	40,039	27,730	12,309	109,372,231
Montgomery	290	810	560	250	1,486,924
Nassau	5,032	12,883	9,302	3,581	36,407,015
Niagara	2,694	7,069	4,683	2,386	14,587,379
Oneida	2,647	8,086	5,609	2,477	15,929,256
Onondaga	6,401	18,452	12,786	5,666	42,061,289
Ontario	538	1,448	967	481	2,921,065
Orange	2,763	8,800	6,412	2,388	18,775,864
Orleans	377	990	674	316	2,147,375
Oswego	1,089	2,975	2,030	945	5,623,026
Otsego	161	413	300	113	817,520
Putnam	104	235	159	76	844,302
Rensselaer	1,208	3,401	2,286	1,115	6,945,240
Rockland	1,222	4,133	3,174	959	9,646,430
St.Lawrence	1,353	3,519	2,230	1,289	6,816,225
Saratoga	286	640	496	144	1,471,692
Schenectady	1,261	3,539	2,515	1,024	7,700,640
Schoharie	121	294	199	95	679,268
Schuyler	108	283	184	99	541,162
Seneca	156	413	287	126	794,827
Steuben	1,110	3,177	1,988	1,189	5,668,736
Suffolk	7,409	20,737	14,883	5,854	68,107,384
Sullivan	647	1,796	1,280	516	3,416,238
Tioga	392	1,003	657	346	1,929,290
Tompkins	549	1,387	920	467	3,043,967
Ulster	1,424	3,605	2,509	1,096	9,224,035
Warren	208	533	360	173	1,165,157
Washington	465	1,171	750	421	2,464,341
Wayne	652	1,784	1,221	563	3,593,072
Westchester	9,284	26,553	17,973	8,580	84,232,097
Wyoming	143	363	236	127	707,250
Yates	84	203	135	68	410,575

* Expenditures partially estimated.

Note: Due to the ongoing welfare reform transition, New York City data for Federally-participating Safety Net cases is included in Family Assistance.

Table A-7
PREDETERMINATION GRANT - INTERIM
 Monthly Average Cases, Recipients, Children and Adults, and Annual Expenditures
 by Local District
 1998 SUMMARY

Local District	Predetermination Grant - Interim				Total Expenditures
	Monthly Average				
	Cases	Recipients	Children	Adults	
New York State	9,568	26,340	15,036	11,304	\$59,211,824
New York City*	9,108	25,121	14,354	10,767	56,879,000
Rest of State	460	1,219	682	537	2,332,824
Albany	10	12	3	9	88,590
Allegany	3	6	2	4	9,912
Broome	15	34	17	17	69,809
Cattaraugus	3	7	3	4	8,668
Cayuga	0	0	0	0	0
Chautauqua	6	11	5	6	12,190
Chemung	2	3	1	2	6,339
Chenango	1	1	0	1	2,111
Clinton	2	2	1	1	5,782
Columbia	1	3	1	2	3,066
Cortland	2	6	3	3	6,977
Delaware	0	0	0	0	1,140
Dutchess	2	8	5	3	10,210
Erie	125	314	156	158	638,675
Essex	1	1	1	0	710
Franklin	2	5	3	2	5,386
Fulton	1	1	0	1	2,262
Genesee	2	2	1	1	5,154
Greene	7	13	6	7	28,928
Hamilton	0	0	0	0	0
Herkimer	1	1	0	1	379
Jefferson	1	4	2	2	3,170
Lewis	1	1	0	1	1,949
Livingston	6	10	5	5	21,862
Madison	0	0	0	0	0
Monroe	49	85	34	51	240,325
Montgomery	0	0	0	0	0
Nassau	3	7	3	4	39,546
Niagara	6	10	5	5	23,996
Oneida	3	8	4	4	11,341
Onondaga	40	79	40	39	185,583
Ontario	1	1	0	1	981
Orange	8	42	31	11	45,257
Orleans	7	13	6	7	31,944
Oswego	1	3	1	2	3,987
Otsego	1	1	0	1	266
Putnam	0	0	0	0	0
Rensselaer	1	3	2	1	4,451
Röckland	45	307	234	73	333,583
St.Lawrence	5	13	6	7	9,928
Saratoga	1	1	0	1	184
Schenectady	1	2	1	1	6,377
Schoharie	0	0	0	0	0
Schuyler	1	2	1	1	677
Seneca	0	0	0	0	0
Steuben	3	5	2	3	10,356
Suffolk	21	52	27	25	122,748
Sullivan	3	8	5	3	15,798
Tioga	4	5	2	3	12,237
Tompkins	6	9	4	5	19,128
Ulster	3	5	3	2	16,817
Warren	0	0	0	0	0
Washington	3	6	3	3	15,378
Wayne	2	4	1	3	5,670
Westchester	47	102	51	51	242,530
Wyoming	1	1	1	0	467
Yates	0	0	0	0	0

* Expenditures partially estimated.

Table A-8

SAFETY NET ASSISTANCE
 Monthly Average Cases, Recipients, Children and Adults, and Annual Expenditures
 by Local District
 1998 SUMMARY

Local District	Safety Net Assistance				Total Expenditures
	Monthly Average				
	Cases	Recipients	Children	Adults	
New York State	154,660	166,326	4,599	161,727	\$585,657,860
New York City*	116,493	125,415	3,351	122,064	399,074,000
Rest of State	38,167	40,911	1,248	39,663	186,583,860
Albany	942	981	22	959	5,548,424
Allegany	222	237	2	235	792,586
Broome	859	946	14	932	3,887,089
Cattaraugus	239	262	7	255	892,249
Cayuga	101	107	3	104	463,963
Chautauqua	604	650	21	629	2,152,097
Chemung	285	312	13	299	1,123,985
Chenango	93	107	8	99	321,699
Clinton	227	246	9	237	857,323
Columbia	185	196	3	193	744,221
Cortland	121	128	5	123	534,172
Delaware	61	68	3	65	256,188
Dutchess	576	640	34	606	2,808,803
Erie	7,146	7,539	141	7,398	28,925,076
Essex	131	142	5	137	478,283
Franklin	215	234	9	225	727,898
Fulton	178	188	5	183	669,473
Genesee	81	85	3	82	362,941
Greene	131	139	2	137	554,750
Hamilton	10	11	0	11	41,604
Herkimer	105	114	5	109	413,231
Jefferson	478	525	25	500	1,957,486
Lewis	62	70	5	65	231,849
Livingston	208	228	10	218	887,977
Madison	47	50	2	48	223,419
Monroe	5,625	6,149	310	5,839	28,500,616
Montgomery	115	121	2	119	547,971
Nassau	2,042	2,125	24	2,101	10,850,673
Niagara	1,011	1,081	45	1,036	4,102,189
Oneida	940	1,028	31	997	4,101,043
Onondaga	1,924	2,046	29	2,017	8,680,045
Ontario	233	250	13	237	1,123,004
Orange	824	860	13	847	4,438,475
Orleans	138	146	2	144	578,703
Oswego	280	305	14	291	1,115,300
Otsego	59	64	2	62	253,681
Putnam	57	61	1	60	318,137
Rensselaer	408	436	16	420	1,867,144
Rockland	508	552	25	527	2,786,151
St. Lawrence	500	568	41	527	1,824,092
Saratoga	101	107	3	104	542,681
Schenectady	249	271	10	261	1,251,374
Schoharie	50	56	5	51	207,156
Schuyler	42	45	0	45	161,323
Seneca	47	52	3	49	198,854
Steuben	458	488	11	477	1,676,459
Suffolk	3,076	3,282	85	3,197	15,274,600
Sullivan	180	188	2	186	861,755
Tioga	76	80	3	77	305,698
Tompkins	280	301	9	292	1,409,256
Ulster	472	514	34	480	2,275,440
Warren	84	94	5	89	388,107
Washington	150	158	4	154	721,061
Wayne	212	226	8	218	921,968
Westchester	4,608	4,937	141	4,796	33,022,645
Wyoming	71	74	1	73	269,914
Yates	40	41	0	41	151,559

* Expenditures partially estimated.

Note: Due to the ongoing welfare reform transition, New York City data for Federally-participating Safety Net cases is included in Family Assistance.

Table A-9

TEMPORARY ASSISTANCE BY FUNDING SOURCE
 Monthly Average Cases and Recipients, and Annual Expenditures
 1998 SUMMARY

Local District	Total			Federally Participating - TANF Family Assistance and Safety Net - FP			Federally Non-Participating Safety Net Assistance-FNP and PG-Interim		
	Cases	Recipients	Expenditures	Cases	Recipients	Expenditures	Cases	Recipients	Expenditures
New York State	487,951	1,076,135	2,651,154,279	324,251	885,135	\$ 2,009,851,574	163,700	191,000	\$641,302,705
New York City*	351,252	759,662	1,796,498,000	225,651	609,126	1,340,545,000	125,601	150,536	455,953,000
Rest of State	136,699	316,473	854,656,279	98,600	276,009	669,306,574	38,099	40,464	185,349,705
Albany	4,110	9,824	30,449,216	3,166	8,857	24,893,376	944	967	5,555,840
Allegany	921	2,215	4,443,399	697	1,974	3,641,511	224	241	801,888
Broome	3,151	7,425	17,777,797	2,280	6,456	13,840,702	871	969	3,937,095
Cattaraugus	975	2,225	4,562,964	736	1,965	3,673,961	239	260	889,003
Cayuga	581	1,337	2,875,449	481	1,234	2,416,215	100	103	459,234
Chautauqua	2,574	6,092	13,657,441	1,975	5,459	11,537,741	599	633	2,119,700
Chemung	1,359	3,175	6,513,880	1,078	2,879	5,407,182	281	296	1,106,698
Chenango	414	1,034	1,959,323	323	937	1,645,357	91	97	313,966
Clinton	855	1,788	3,812,933	632	1,554	2,974,887	223	234	838,046
Columbia	649	1,429	3,137,519	464	1,233	2,393,115	185	196	744,404
Cortland	544	1,346	3,162,355	423	1,219	2,627,389	121	127	534,966
Delaware	252	536	1,252,182	192	471	1,002,084	60	65	250,098
Dutchess	2,116	4,629	12,448,137	1,558	4,035	9,756,230	558	594	2,691,907
Erie	23,063	52,316	118,183,201	15,830	44,640	88,842,825	7,233	7,676	29,340,376
Essex	394	845	1,737,883	263	708	1,262,594	131	137	475,289
Franklin	668	1,403	2,817,696	455	1,176	2,095,975	213	227	721,721
Fulton	621	1,395	2,883,608	444	1,213	2,214,985	177	182	668,623
Genesee	327	769	1,794,162	245	686	1,431,970	82	83	362,192
Greene	558	1,260	2,846,903	421	1,110	2,269,001	137	150	577,902
Hamilton	26	44	115,127	16	33	73,523	10	11	41,604
Herkimer	444	1,043	2,076,416	341	936	1,672,310	103	107	404,106
Jefferson	1,735	3,895	9,190,646	1,269	3,404	7,294,968	466	491	1,895,678
Lewis	200	454	868,468	138	389	641,665	62	65	226,803
Livingston	637	1,292	3,256,602	427	1,067	2,377,352	210	225	879,250
Madison	236	488	1,176,471	191	442	962,087	45	46	214,384
Monroe	19,659	46,273	138,113,172	14,123	40,458	110,457,379	5,536	5,815	27,655,793
Montgomery	405	931	2,033,895	291	812	1,489,479	114	119	544,416
Nassau	7,077	15,015	47,297,234	5,041	12,908	36,480,908	2,036	2,107	10,816,326
Niagara	3,711	8,160	18,713,564	2,715	7,132	14,677,081	996	1,028	4,036,483
Oneida	3,590	9,122	20,041,640	2,663	8,132	16,023,761	927	990	4,017,879
Onondaga	8,365	20,577	50,926,917	6,410	18,481	42,120,759	1,955	2,096	8,806,158
Ontario	772	1,699	4,045,050	544	1,466	2,969,312	228	233	1,075,738
Orange	3,595	9,702	23,259,596	2,766	8,811	18,790,639	829	891	4,468,957
Orleans	522	1,149	2,758,022	378	993	2,154,096	144	156	603,926
Oswego	1,370	3,283	6,742,313	1,095	2,995	5,642,980	275	288	1,099,333
Otsego	221	478	1,071,467	163	417	829,614	58	61	241,853
Putnam	161	296	1,162,439	105	237	846,303	56	59	316,136
Rensselaer	1,617	3,840	8,816,835	1,216	3,424	6,985,840	401	416	1,830,995
Rockland	1,775	4,992	12,766,164	1,228	4,166	9,686,192	547	826	3,079,972
St. Lawrence	1,858	4,100	8,650,245	1,372	3,586	6,892,089	486	514	1,758,156
Saratoga	388	748	2,014,557	287	643	1,479,409	101	105	535,148
Schenectady	1,511	3,812	8,958,391	1,266	3,554	7,733,040	245	258	1,225,351
Schoharie	171	350	886,424	125	303	692,161	46	47	194,263
Schuyler	151	330	703,162	109	284	542,414	42	46	160,748
Seneca	203	465	993,681	158	419	803,842	45	46	189,839
Steuben	1,571	3,670	7,355,551	1,113	3,189	5,678,482	458	481	1,677,069
Suffolk	10,506	24,071	83,504,732	7,431	20,807	68,298,520	3,075	3,264	15,206,212
Sullivan	830	1,992	4,293,791	648	1,798	3,416,880	182	194	876,911
Tioga	472	1,088	2,247,225	394	1,008	1,938,209	78	80	309,016
Tompkins	835	1,697	4,472,351	552	1,398	3,064,846	283	299	1,407,505
Ulster	1,899	4,124	11,516,292	1,447	3,660	9,375,313	452	464	2,140,979
Warren	292	627	1,553,264	211	541	1,181,093	81	86	372,171
Washington	618	1,335	3,200,780	468	1,177	2,474,200	150	158	726,580
Wayne	866	2,014	4,520,710	655	1,795	3,609,064	211	219	911,646
Westchester	13,939	31,592	117,497,272	9,353	26,770	84,904,573	4,586	4,822	32,592,699
Wyoming	215	438	977,631	144	365	708,516	71	73	269,115
Yates	124	244	562,134	84	203	410,575	40	41	151,559

* Expenditures partially estimated.

Table A-10
FOOD STAMPS
 Monthly Average Households and Persons, and Annual Expenditures
 1998 SUMMARY

Local District	Total			Temporary Assistance			Non-Temporary Assistance		
	Households	Persons	Food Stamps Benefits	Households	Persons	Food Stamps Benefits	Households	Persons	Food Stamps Benefits
New York State	796,391	1,643,820	\$1,527,384,693	591,826	1,129,876	\$1,102,700,051	204,565	513,944	\$424,684,642
New York City	526,851	1,058,745	1,048,628,624	433,659	831,140	832,230,470	93,192	227,605	216,398,154
Rest of State	269,540	585,075	478,756,069	158,167	298,736	270,469,581	111,373	286,339	208,286,488
Albany	8,522	18,381	15,438,918	5,082	9,750	8,838,759	3,440	8,631	6,600,159
Allegany	2,096	4,641	3,505,961	1,156	2,189	1,875,735	940	2,452	1,630,226
Broome	6,649	13,926	10,956,686	3,838	7,126	6,237,983	2,811	6,800	4,718,703
Cattaraugus	3,084	6,536	4,909,206	1,322	2,190	1,957,190	1,762	4,346	2,952,016
Cayuga	2,107	4,765	3,682,648	829	1,349	1,160,389	1,278	3,416	2,522,259
Chautauqua	5,408	11,868	9,363,052	3,118	5,795	5,352,949	2,290	6,073	4,010,103
Chemung	2,853	6,383	4,841,499	1,546	2,824	2,499,964	1,307	3,559	2,341,535
Chenango	1,656	3,904	3,008,784	583	1,029	957,818	1,073	2,875	2,050,966
Clinton	3,032	6,189	5,025,407	1,440	2,088	1,932,524	1,592	4,101	3,092,883
Columbia	1,527	3,123	2,558,503	762	1,313	1,251,019	765	1,810	1,307,484
Cortland	1,424	3,200	2,609,185	697	1,258	1,129,851	727	1,942	1,479,334
Delaware	1,165	2,396	1,767,360	481	694	588,786	684	1,702	1,178,574
Dutchess	4,132	8,327	6,980,944	2,274	4,277	4,010,927	1,858	4,050	2,970,017
Erie	42,273	88,059	76,170,688	27,003	50,765	50,035,157	15,270	37,294	26,135,531
Essex	1,157	2,402	1,740,989	581	910	742,562	576	1,492	998,427
Franklin	1,869	3,929	3,153,176	863	1,314	1,212,496	1,006	2,615	1,940,680
Fulton	1,864	4,075	3,310,809	903	1,457	1,349,430	961	2,618	1,961,379
Genesee	1,206	2,604	2,007,189	496	757	680,187	710	1,847	1,327,002
Greene	1,306	2,808	2,281,050	649	1,184	1,119,369	657	1,624	1,161,681
Hamilton	157	257	167,504	31	43	40,464	126	214	127,040
Herkimer	1,809	4,062	3,114,113	673	1,036	884,562	1,136	3,026	2,229,551
Jefferson	3,774	8,772	6,964,136	1,997	3,660	3,368,042	1,777	5,112	3,596,091
Lewis	774	1,784	1,383,980	303	489	408,256	471	1,295	975,724
Livingston	1,575	3,189	2,528,761	745	1,239	1,164,137	830	1,950	1,364,624
Madison	1,447	3,081	2,410,713	543	699	571,771	904	2,362	1,838,942
Monroe	28,226	62,588	50,419,895	20,832	42,099	36,680,224	7,394	20,489	13,739,671
Montgomery	1,776	4,081	3,380,731	654	1,039	916,904	1,122	3,042	2,463,827
Nassau	11,135	21,537	17,992,626	7,393	13,487	12,027,672	3,742	8,050	5,964,954
Niagara	6,966	14,813	12,106,139	4,145	7,671	7,042,422	2,821	7,142	5,063,717
Oneida	9,740	21,722	17,897,549	4,734	8,823	8,098,222	5,006	12,899	9,799,327
Onondaga	14,526	33,709	28,462,610	9,073	19,591	17,622,776	5,453	14,118	10,839,834
Ontario	2,047	4,106	3,178,565	1,010	1,737	1,567,044	1,037	2,369	1,611,521
Orange	8,030	20,740	17,740,891	3,843	8,591	7,864,537	4,187	12,149	9,876,354
Orleans	1,207	2,683	2,091,853	578	1,059	974,060	629	1,624	1,117,793
Oswego	3,498	8,731	7,030,620	1,566	2,929	2,689,884	1,932	5,802	4,340,736
Otsego	1,322	2,650	1,995,668	505	649	529,775	817	2,001	1,465,893
Putnam	481	833	593,729	280	390	303,252	201	443	290,477
Rensselaer	4,482	9,774	8,151,578	2,089	3,717	3,359,970	2,393	6,057	4,791,608
Rockland	4,636	14,771	12,321,658	2,020	4,334	3,219,817	2,616	10,437	9,101,841
St. Lawrence	3,985	8,831	6,797,207	2,166	4,000	3,523,182	1,819	4,831	3,274,025
Saratoga	2,739	5,622	4,575,215	917	1,175	991,385	1,822	4,447	3,583,830
Schenectady	3,943	8,745	6,985,048	2,007	3,761	3,349,919	1,936	4,984	3,635,129
Schoharie	759	1,593	1,248,363	328	475	397,345	431	1,118	851,018
Schuyler	443	956	736,898	196	336	293,444	247	620	443,454
Seneca	805	1,564	1,090,766	327	496	384,788	478	1,068	705,978
Steuben	3,255	7,650	5,979,553	1,768	3,406	3,121,166	1,487	4,244	2,858,387
Suffolk	17,723	36,433	29,275,151	11,509	21,884	18,661,336	6,214	14,549	10,613,815
Sullivan	2,294	4,816	3,592,962	1,205	1,991	1,709,922	1,089	2,825	1,883,040
Tioga	1,160	2,761	2,091,835	526	939	864,233	634	1,822	1,227,602
Tompkins	2,013	4,100	3,300,615	996	1,605	1,440,453	1,017	2,495	1,860,162
Ulster	4,291	8,444	6,592,252	2,384	4,023	3,398,888	1,907	4,421	3,193,364
Warren	1,567	3,180	2,423,269	683	992	805,530	884	2,188	1,617,739
Washington	1,499	3,129	2,460,504	769	1,309	1,187,370	730	1,820	1,273,134
Wayne	2,263	4,480	3,513,610	1,151	2,072	1,940,685	1,112	2,408	1,572,925
Westchester	18,376	38,336	32,554,445	14,055	27,905	25,418,164	4,321	10,431	7,136,281
Wyoming	759	1,593	1,229,636	291	462	403,610	468	1,131	826
Yates	728	1,463	1,063,367	252	354	311,275	476	1,109	752,092

Table A-11
SUPPLEMENTAL SECURITY INCOME
 Monthly Average Recipients, Total Annual Program Expenditures and Federal and State Shares
 by Local District
 1998 SUMMARY

Local District	Expenditures			
	Recipients	Total	Federal	State
New York State	609,197	\$3,112,325,501	\$2,562,274,602	\$550,050,899
New York City	380,066	2,022,085,845	1,705,280,271	316,805,574
Rest of State	217,586	1,045,798,839	828,099,271	217,699,568
Albany	6,335	31,234,426	24,354,905	6,879,521
Allegany	1,519	7,475,090	6,024,279	1,450,811
Broome	4,824	23,253,209	18,919,083	4,334,126
Cattaraugus	2,342	11,253,102	9,096,874	2,156,228
Cayuga	1,774	8,378,362	6,455,441	1,922,921
Chautauqua	4,033	19,444,795	15,650,373	3,794,422
Chemung	2,785	13,097,867	10,656,517	2,441,350
Chenango	1,288	5,592,926	4,646,068	946,858
Clinton	2,500	11,596,747	9,375,161	2,221,586
Columbia	1,506	7,057,355	5,315,394	1,741,961
Cortland	1,269	5,892,133	4,697,523	1,194,610
Delaware	1,181	5,180,837	3,998,413	1,182,424
Dutchess	4,323	20,818,983	15,412,818	5,406,165
Erie	25,637	128,803,375	105,070,120	23,733,255
Essex	906	4,049,024	2,991,634	1,057,390
Franklin	1,590	7,332,800	5,760,188	1,572,612
Fulton	1,728	7,563,779	5,988,084	1,575,695
Genesee	992	4,464,360	3,526,043	938,317
Greene	1,059	5,067,335	3,995,023	1,072,312
Hamilton	73	263,627	210,407	53,220
Herkimer	1,589	6,883,578	5,536,065	1,347,513
Jefferson	2,849	13,207,555	10,589,376	2,618,179
Lewis	632	2,771,752	2,227,690	544,062
Livingston	933	4,331,546	3,521,230	810,316
Madison	1,274	5,653,625	4,368,109	1,285,516
Monroe	17,021	86,898,268	70,519,033	16,379,235
Montgomery	1,371	5,846,575	4,566,045	1,280,530
Nassau	16,537	77,489,908	59,252,343	18,237,565
Niagara	4,923	23,636,644	18,718,659	4,917,985
Oneida	7,099	34,024,551	27,606,540	6,418,011
Onondaga	10,575	52,193,575	42,985,344	9,208,231
Ontario	1,460	6,922,059	5,594,231	1,327,828
Orange	6,005	28,705,018	23,054,183	5,650,835
Orleans	897	4,043,801	3,283,243	760,558
Oswego	2,779	13,069,505	10,837,470	2,232,035
Otsego	1,348	5,895,441	4,376,162	1,519,279
Putnam	735	3,534,960	2,488,822	1,046,138
Rensselaer	3,124	14,702,219	11,514,483	3,187,736
Rockland	4,286	21,064,378	15,213,845	5,850,533
St. Lawrence	3,730	17,587,341	14,583,605	3,003,736
Saratoga	2,380	10,455,593	8,187,190	2,268,403
Schenectady	3,509	16,910,312	13,455,323	3,454,989
Schoharie	718	3,149,115	2,302,318	846,797
Schuyler	482	2,282,255	1,791,258	490,997
Seneca	688	3,158,755	2,436,506	722,249
Steuben	2,829	13,610,900	11,201,462	2,409,438
Suffolk	20,953	101,396,957	76,706,156	24,690,801
Sullivan	2,590	12,426,179	8,897,091	3,529,088
Tioga	1,024	4,921,630	4,146,379	775,251
Tompkins	1,522	7,232,016	5,691,441	1,540,575
Ulster	4,038	19,296,945	15,187,270	4,109,675
Warren	1,405	6,193,226	4,984,728	1,208,498
Washington	1,352	6,139,004	4,822,209	1,316,795
Wayne	1,817	8,618,648	6,913,061	1,705,587
Westchester	14,316	68,604,657	54,310,084	14,294,573
Wyoming	636	2,864,285	2,307,291	556,994
Yates	496	2,255,931	1,778,678	477,253
Mental Hygiene	11,545	44,440,817	28,895,060	15,545,757

Note: Only New York State includes Mental Hygiene.

Table A-12
EMERGENCY ASSISTANCE
Monthly Average Number of Cases and Recipients Receiving Assistance and Total Expenditures
in the EAF and EAA Programs by Local District
1998 SUMMARY

Local District	Emergency Assistance to Families					Emergency Assistance to Adults				
	Monthly Average				Quarterly Expenditures	Monthly Average				Quarterly Expenditures
	Cases	Recipients	Children	Adults		Cases	Recipients	Children	Adults	
New York State	13,209	38,143	22,812	15,331	\$84,683,979	1,705	2,149	342	1,807	\$7,786,214
New York City*	10,411	30,362	18,270	12,092	67,922,508	532	671	108	563	2,485,667
Rest of State	2,798	7,781	4,542	3,239	16,761,471	1,173	1,478	234	1,244	5,300,547
Albany	58	144	80	64	481,753	31	35	4	31	155,684
Allegany	8	28	15	13	39,445	6	6	0	6	27,795
Broome	14	28	14	14	61,617	5	6	1	5	15,573
Cattaraugus	38	133	76	57	222,903	12	17	3	14	41,902
Cayuga	17	49	25	24	97,265	1	1	0	1	2,406
Chautauqua	32	107	58	49	202,749	18	24	3	21	74,598
Chemung	25	72	37	35	202,347	8	11	1	10	42,544
Chenango	10	26	13	13	48,563	1	1	0	1	4,038
Clinton	21	66	36	30	113,849	10	12	1	11	40,591
Columbia	6	17	9	8	26,981	2	4	1	3	11,714
Cortland	9	27	15	12	62,766	1	2	0	2	3,993
Delaware	23	86	50	36	149,451	4	5	1	4	14,936
Dutchess	29	72	38	34	203,147	11	11	0	11	73,497
Erie	68	209	123	86	527,177	107	114	8	106	350,894
Essex	5	14	7	7	25,755	1	1	0	1	4,480
Franklin	22	64	35	29	66,084	3	3	0	3	8,383
Fulton	15	50	28	22	81,925	4	4	0	4	19,005
Genesee	8	29	16	13	38,305	1	1	0	1	1,280
Greene	16	49	27	22	74,566	9	17	6	11	40,672
Hamilton	1	2	1	1	1,933	0	0	0	0	0
Herkimer	14	50	28	22	71,940	2	3	1	2	9,015
Jefferson	27	62	28	34	177,205	9	9	1	8	35,300
Lewis	5	17	10	7	33,592	1	1	0	1	1,100
Livingston	46	143	80	63	227,053	8	10	1	9	41,690
Madison	22	67	38	29	132,307	1	1	0	1	2,060
Monroe	93	238	162	76	635,279	91	95	6	89	627,619
Montgomery	22	73	42	31	108,305	3	3	0	3	12,866
Nassau	91	291	177	114	1,155,815	79	114	32	82	507,072
Niagara	18	47	27	20	105,252	7	8	1	7	27,851
Oneida	32	93	54	39	188,027	23	26	2	24	82,780
Onondaga	525	998	435	563	1,871,615	95	95	2	93	214,912
Ontario	14	45	26	19	101,481	3	4	1	3	18,275
Orange	13	36	21	15	94,682	33	25	2	23	200,576
Orleans	20	68	38	30	174,311	3	4	1	3	12,587
Oswego	19	60	36	24	124,400	3	4	1	3	11,881
Otsego	13	35	20	15	94,639	1	1	0	1	4,359
Putnam	6	17	9	8	53,060	4	6	2	4	40,074
Rensselaer	23	75	44	31	189,027	14	15	1	14	77,304
Rockland	22	64	40	24	433,590	51	87	31	56	249,125
St. Lawrence	25	57	23	34	98,975	3	5	1	4	14,508
Saratoga	29	90	51	39	265,812	5	9	3	6	21,803
Schenectady	26	80	45	35	183,041	66	81	6	75	220,271
Schoharie	11	29	15	14	82,051	2	4	1	3	13,569
Schuyler	6	18	9	9	60,062	1	1	0	1	738
Seneca	5	15	9	6	25,991	1	1	0	1	767
Steuben	16	53	31	22	218,673	2	2	0	2	6,359
Suffolk	298	993	615	378	2,491,104	324	449	77	372	1,287,989
Sullivan	7	15	9	6	47,398	7	9	1	8	30,879
Tioga	11	31	17	14	60,230	2	2	0	2	7,152
Tompkins	37	95	49	46	243,668	14	16	1	15	83,259
Ulster	23	47	21	26	122,948	5	6	1	5	24,299
Warren	7	20	11	9	46,782	1	1	0	1	5,324
Washington	9	23	11	12	42,036	3	4	0	4	16,427
Wayne	12	27	12	15	67,929	2	2	0	2	7,079
Westchester	814	2,394	1,572	822	3,940,206	67	98	29	69	445,437
Wyoming	6	20	11	9	31,542	1	1	0	1	800
Yates	6	23	13	10	30,862	1	1	0	1	3,322

* NYC caseload estimated.