

# NEW YORK STATE DEPARTMENT OF SOCIAL SERVICES

MARY JO BANE, COMMISSIONER

## SOCIAL STATISTICS

December 1991

---

**Note:** Annual 1991 tables are contained in this issue.

**Income Maintenance:** Recipients of Public Assistance totaled 1,478,675 in December 1991 increasing only 12,668 (+0.9%) over the previous month. Comparable expenditures totaled \$314,532,577 for December, \$12,362,317 million (+4.1%) over November 1991.

For calendar year 1991, monthly average recipients totaled 1,419,440, increasing 132,435 (+ 10.3%) over the previous year's monthly average. Public Assistance expenditures totaled \$3,558,003,950, increasing \$421.1 million over the 1990 total.

**Medical Assistance:** Expenditures for Medicaid during December 1991 totaled approximately \$1.3 billion, bringing the annual total to \$13.6 billion, an increase of 16.5% (\$1.9 billion) over expenditures reported for 1990. Medicaid payments were made for 1,568,740 beneficiaries during December 1991, the highest number ever reported for the program. Medicaid beneficiaries averaged 1,442,635 persons per month during 1991, an increase of 9.0% (119,193) from 1990.

Persons eligible for Medicaid services in December 1991 numbered 2,656,962, resulting in a monthly average of 2,568,517 for 1991, an increase of 8.8% (208,845) over 1990. This increase was due mainly to a 162,650 increase in monthly average eligibles who also were eligible for subsistence payments (AFDC, HR, SSI). Monthly average Medicaid Only eligibles increased by 46,194.

**Food Stamps:** Food Stamps recipients numbered 1,858,514 in December 1991, increasing 25,624 (+1.4%) over November 1991. Food Stamps expenditures totaled \$127,275,467 in December 1991, increasing \$2.0 million (+1.6%) over the previous month. These increases occurred in both the PA and NPA categories.

The monthly average of Food Stamps recipients in Calendar 1991 totaled 1,766,753, increasing 180,846 (+11.4%) from last year. Food Stamps expenditures for CY 1991 totaled \$1.4 billion, increasing \$235.5 million, (+20.9%) over CY 1990 expenditures.

**Supplemental Security Income:** In December 1991, SSI recipients totaled 444,309, increasing slightly over the previous month. SSI expenditures totaled \$153,678,733 in December, increasing \$3.1 million (+2.1%) over November 1991.

For Calendar year 1991, SSI totals were as follows: Monthly average recipients - 428,697; Total expenditures - \$1,750,005,805. Both of these totals are increases over CY 1990.

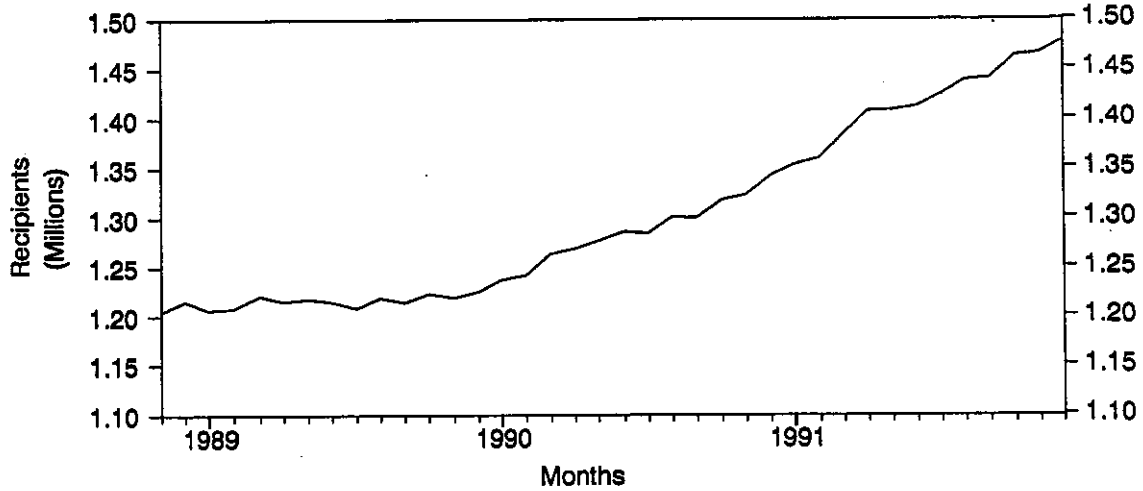
**Child Support Enforcement:** Collections for the quarter October - December 1991 were \$110,968,316, decreasing \$8.1 million (-6.8%) from the previous quarter, but increasing \$16.6 million (+17.6%) over the same quarter in 1990. For calendar year 1991, collections totaled \$442.4 million, increasing \$58.1 million (+15.1%) over the previous year.

Volume LIII, No. 12  
Date Issued: March 27, 1992

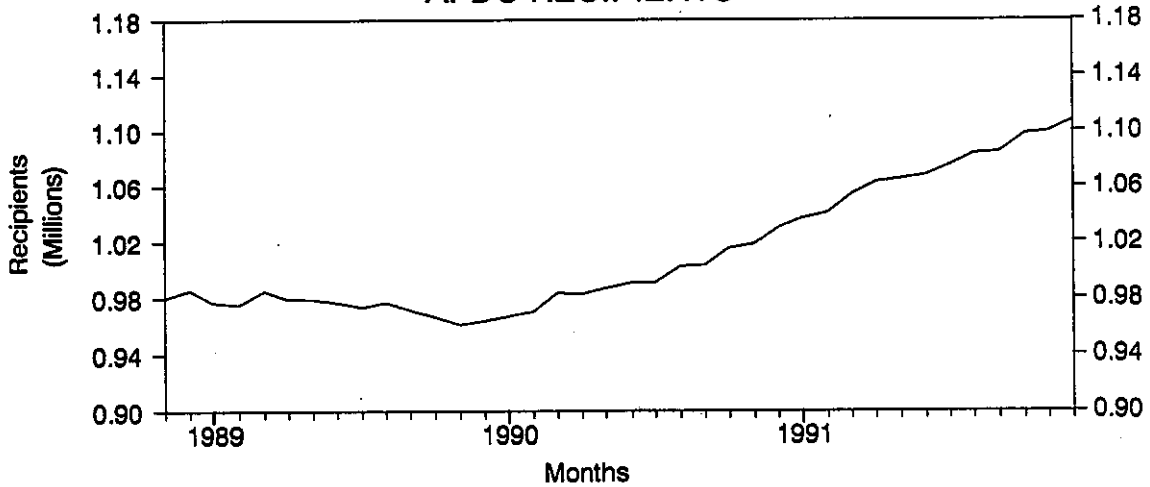
# NEW YORK STATE

November 1988 to December 1991

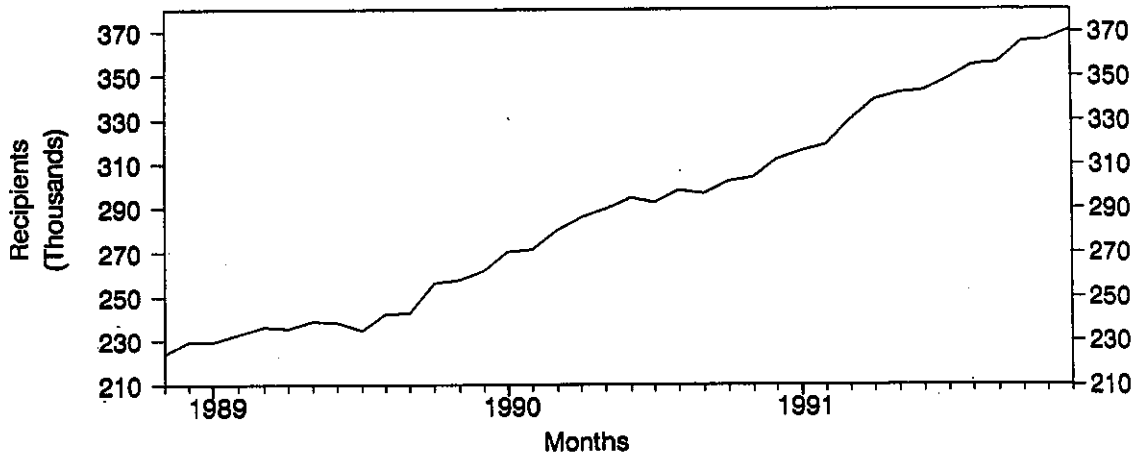
## PA RECIPIENTS



## AFDC RECIPIENTS



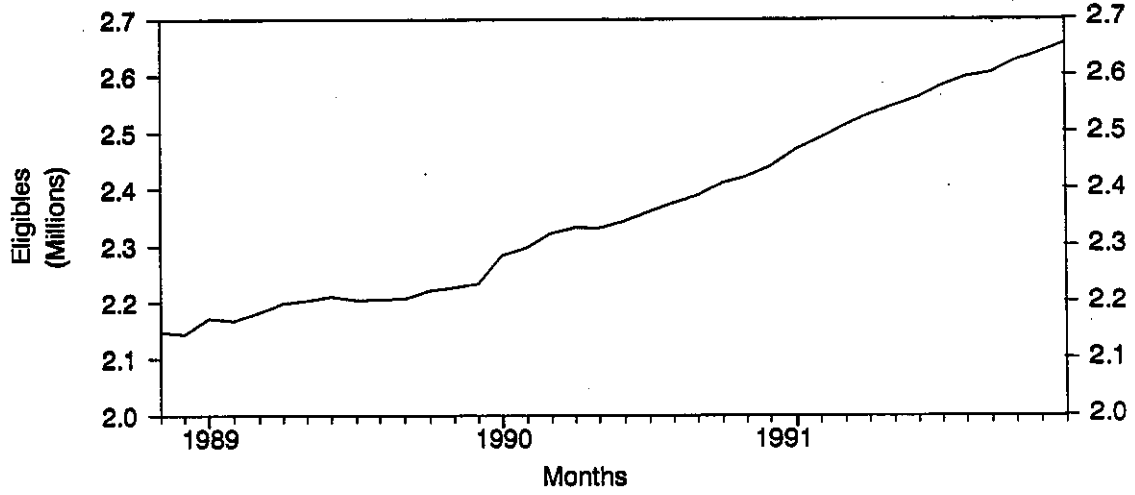
## HR RECIPIENTS



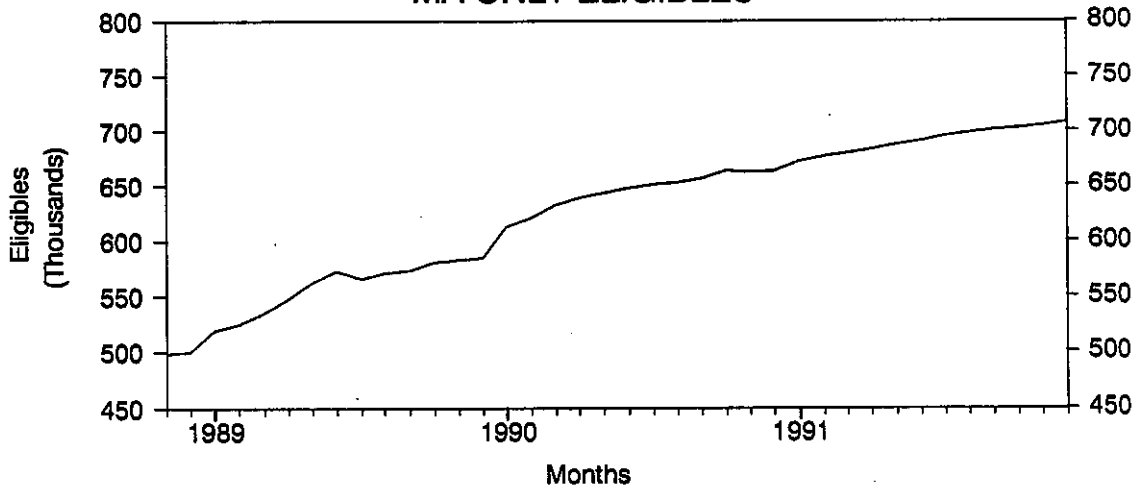
# NEW YORK STATE

November 1988 to December 1991

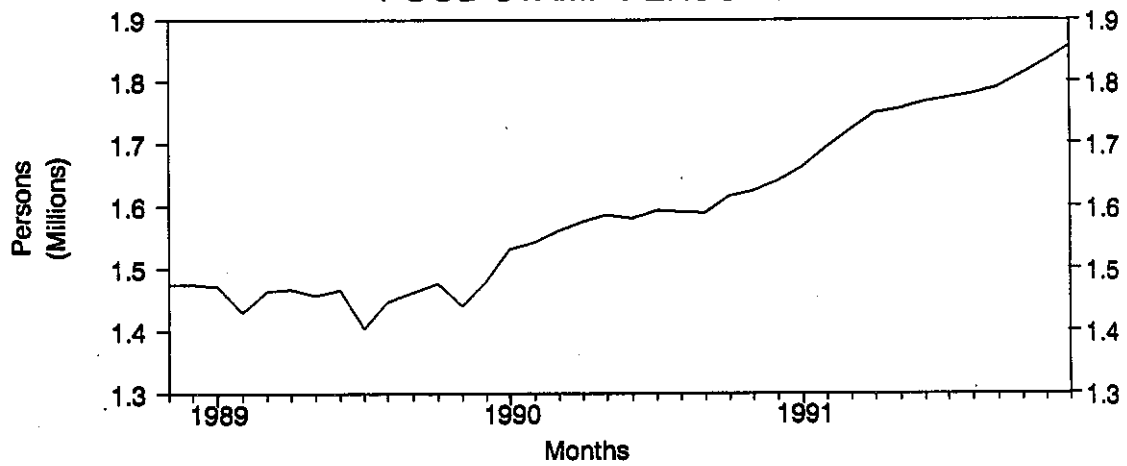
## TOTAL MA ELIGIBLES



## MA ONLY ELIGIBLES



## FOOD STAMP PERSONS



SELECTED SUMMARY PROGRAM DATA  
FOR LOCAL SOCIAL SERVICES DISTRICTS

Table 1  
PUBLIC ASSISTANCE CASES  
December 1991

Region	Cases					
	Aid to Families with Dependent Children			Home Relief	Supplemental Security Income	Food Stamps
	Total	Basic	Unemployed Parent			
New York State	393,520	379,151	14,369	295,847	432,766	839,324
New York City	256,634	253,008	3,626	213,312	269,273	540,303
Rest of State	136,886	126,143	10,743	82,535	163,493	299,021

Table 2  
PUBLIC ASSISTANCE RECIPIENTS  
December 1991

Region	Recipients					
	Aid to Families with Dependent Children			Home Relief	Supplemental Security Income	Food Stamps
	Total	Basic	Unemployed Parent			
New York State	1,107,742	1,046,596	61,146	370,933	432,766	1,858,514
New York City	708,268	692,601	15,667	268,972	269,273	1,169,257
Rest of State	399,474	353,995	45,479	101,961	163,493	689,257

Table 3  
PUBLIC ASSISTANCE EXPENDITURES  
December 1991

Region	Expenditures					
	Aid to Families with Dependent Children			Home Relief	Supplemental Security Income	Food Stamps
	Total	Basic	Unemployed Parent			
New York State	\$212,333,246	\$203,326,333	\$9,006,913	\$102,199,331	\$151,231,563	\$127,275,467
New York City	130,107,000	127,895,000	2,212,000	69,325,000	97,550,041	82,427,967
Rest of State	82,226,246	75,431,333	6,794,913	32,874,331	53,681,522	44,847,500

Table 4  
MEDICAL ASSISTANCE EXPENDITURES  
December 1991

Region	Medical Expenditures					
	Total	Inpatient Hospital	Nursing Home and ICF	Outpatient Hospital and Clinic	Personal Care and Home Health	All Other Medical
New York State	\$1,288,794,582	\$455,243,371	\$334,790,232	\$135,741,052	\$188,573,105	\$174,446,822
New York City	868,542,839	363,023,800	172,747,226	85,253,312	138,795,166	108,723,335
Rest of State	420,251,743	92,219,571	162,043,006	50,487,740	49,777,939	65,723,487

Table 5  
PUBLIC ASSISTANCE AND MEDICAL ASSISTANCE  
MONTHLY AVERAGE  
January - December 1991

Program	Recipients			Expenditures			Current Payments/ Recipient
	Current Year	Previous Year	Percent Change	Current Year	Previous Year	Percent Change	
<b>New York State</b>							
Total Income Maintenance	1,419,440	1,287,004	10.3	\$296,500,330	\$261,405,265	13.4	\$208.89
AFDC - Total	1,073,445	995,579	7.8	202,605,864	185,293,263	9.3	188.74
Basic	1,017,188	953,232	6.7	194,511,826	179,408,022	8.4	191.23
Unemployed Parent	56,257	42,347	32.8	8,094,038	5,885,241	37.5	143.88
Home Relief - Total	345,995	291,425	18.7	93,894,466	76,112,002	23.4	271.38
Family Cases	132,411	113,797	16.4	24,624,946	19,230,916	28.0	185.97
One-Person Cases	213,584	177,628	20.2	69,269,520	56,881,086	21.8	324.32
SSI	416,972	387,732	7.5	143,357,917	127,089,642	12.8	343.81
Food Stamps	1,766,754	1,585,908	11.4	113,685,389	94,061,507	20.9	64.35
M.A. Beneficiaries	1,442,635	1,323,442	9.0	1,129,821,653	968,126,915	16.7	783.17
<b>New York City</b>							
Total Income Maintenance	939,388	858,577	9.4	189,340,335	166,487,443	13.7	201.56
AFDC - Total	692,534	654,141	5.9	126,352,857	117,305,952	7.7	182.45
Basic	677,522	641,384	5.6	124,233,527	115,540,396	7.5	183.36
Unemployed Parent	15,012	12,757	17.7	2,119,330	1,765,556	20.0	141.18
Home Relief - Total	246,854	204,436	20.7	62,987,478	49,181,491	28.1	255.16
Family Cases	97,179	82,359	18.0	17,855,671	13,317,371	34.1	183.74
One-Person Cases	149,675	122,077	22.6	45,131,807	35,864,120	25.8	301.53
SSI	259,925	242,333	7.3	92,498,904	82,119,922	12.6	355.87
Food Stamps	1,114,076	1,016,728	9.6	73,411,043	61,639,808	19.1	65.89
M.A. Beneficiaries	914,165	848,181	7.8	760,591,414	658,300,490	15.5	832.01
<b>Rest of State</b>							
Total Income Maintenance	480,052	428,427	12.0	107,159,995	94,917,822	12.9	223.23
AFDC - Total	380,911	341,438	11.6	76,253,007	67,987,311	12.2	200.19
Basic	339,666	311,848	8.9	70,278,299	63,867,626	10.0	206.90
Unemployed Parent	41,245	29,590	39.4	5,974,708	4,119,685	45.0	144.86
Home Relief - Total	99,141	86,989	14.0	30,906,988	26,930,511	14.8	311.75
Family Cases	35,232	31,438	12.1	6,769,275	5,913,545	14.5	192.13
One-Person Cases	63,909	55,551	15.0	24,137,713	21,016,966	14.8	377.69
SSI	157,047	145,399	8.0	50,859,013	44,969,720	13.1	323.85
Food Stamps	652,678	569,180	14.7	40,274,346	32,421,699	24.2	61.71
M.A. Beneficiaries	528,470	475,261	11.2	369,230,239	309,826,425	19.2	698.68

Table 6  
INCOME MAINTENANCE  
Cases, recipients and expenditures, by social services district  
December 1991

Social Services District	Total AFDC & HR			Aid to Families With Dependent Children				
	Cases	Recipients	Expenditures	Cases	Recipients	Children	Adults	Expenditures
New York State	689,367	1,478,675	\$314,532,577	393,520	1,107,742	737,030	370,712	\$212,333,246
New York City*	469,946	977,240	199,432,000	256,634	708,268	476,303	231,965	130,107,000
Rest of State	219,421	501,435	115,100,577	136,886	399,474	260,727	138,747	82,226,246
Albany	6,239	14,060	3,095,153	3,867	11,143	7,372	3,771	2,200,903
Allegany	1,794	4,319	876,453	1,090	3,371	2,077	1,294	621,015
Broome	4,969	11,396	2,419,430	2,865	8,660	5,474	3,186	1,649,274
Cattaraugus	1,946	4,765	798,203	1,241	3,850	2,430	1,420	587,799
Cayuga	1,621	3,838	670,879	1,188	3,364	2,065	1,299	544,721
Chautauqua	4,725	11,139	1,967,159	2,883	8,763	5,572	3,191	1,402,576
Chemung	2,609	6,292	1,108,443	1,664	5,037	3,179	1,858	811,227
Chenango	873	2,313	359,093	605	1,948	1,233	715	280,210
Clinton	1,742	3,947	689,415	1,053	3,034	1,894	1,140	472,911
Columbia	1,131	2,646	506,662	741	2,164	1,357	807	375,088
Cortland	1,072	2,628	491,630	625	1,901	1,202	699	325,003
Delaware	912	2,172	422,176	539	1,608	1,009	599	285,358
Dutchess	3,772	8,243	1,841,937	2,315	6,599	4,304	2,295	1,277,061
Erie	33,406	73,478	14,903,614	20,120	58,165	37,762	20,403	10,377,860
Essex	986	2,290	406,653	559	1,785	1,096	689	270,633
Franklin	1,399	3,127	570,684	751	2,292	1,383	909	372,043
Fulton	1,314	2,993	559,055	765	2,254	1,429	825	373,904
Genesee	728	1,735	340,616	510	1,463	934	529	266,096
Greene	842	1,928	382,625	529	1,433	886	547	271,090
Hamilton	39	101	17,268	23	83	54	29	10,972
Herkimer	973	2,541	443,397	711	2,224	1,401	823	362,304
Jefferson	2,814	6,632	1,228,847	1,782	5,257	3,185	2,072	878,285
Lewis	480	1,275	199,700	292	1,019	627	392	143,315
Livingston	1,240	2,695	536,360	758	2,109	1,255	854	377,339
Madison	748	1,947	330,939	543	1,615	1,029	586	260,308
Monroe	25,552	58,774	15,380,920	16,394	48,178	32,522	15,656	11,366,161
Montgomery	905	2,367	398,848	614	1,928	1,267	661	300,677
Nassau	10,065	20,912	5,854,365	6,428	16,849	11,468	5,381	4,099,298
Niagara	6,051	13,114	2,698,529	3,688	10,272	6,490	3,782	1,877,323
Oneida	5,775	14,102	2,529,241	3,588	11,288	7,386	3,902	1,783,458
Onondaga	12,544	28,769	6,097,580	7,862	22,994	15,477	7,517	4,486,046
Ontario	1,851	4,089	815,497	1,136	3,255	2,004	1,251	574,370
Orange	5,541	14,115	2,939,265	3,481	10,688	7,300	3,388	2,074,568
Orleans	911	2,135	393,794	594	1,740	1,129	611	292,324
Oswego	2,624	6,712	1,191,869	1,777	5,547	3,478	2,069	904,924
Otsego	660	1,711	345,642	459	1,432	907	525	268,244
Putnam	396	779	242,349	228	585	365	220	134,006
Rensselaer	2,947	6,872	1,195,321	1,916	5,719	3,602	2,117	885,635
Rockland	2,734	7,063	1,673,549	1,642	4,867	3,312	1,555	1,141,547
St. Lawrence	3,414	7,876	1,543,278	1,963	6,005	3,564	2,441	1,041,308
Saratoga	1,233	3,038	515,443	861	2,520	1,603	917	398,444
Schenectady	2,949	6,837	1,338,674	1,865	5,482	3,579	1,903	940,445
Schoharie	470	1,134	169,773	274	859	527	332	116,859
Schuyler	402	915	168,228	264	748	440	308	127,138
Seneca	370	906	161,302	268	769	489	280	127,788
Steuben	2,441	5,809	1,021,533	1,490	4,524	2,797	1,727	723,699
Suffolk	20,100	47,464	13,299,020	13,702	39,519	26,324	13,195	10,275,635
Sullivan	1,390	3,591	578,606	946	2,954	1,970	984	446,412
Tioga	987	2,355	409,433	633	1,893	1,173	720	291,464
Tompkins	1,522	3,270	762,288	845	2,423	1,540	883	497,590
Ulster	3,062	7,130	1,618,314	2,070	5,921	3,856	2,065	1,219,587
Warren	581	1,438	266,284	430	1,255	794	461	214,065
Washington	971	2,315	467,281	662	1,887	1,174	713	358,619
Wayne	1,651	3,982	755,234	1,052	3,220	2,087	1,133	547,598
Westchester	19,999	41,132	14,705,317	11,135	31,262	20,825	10,437	9,630,384
Wyoming	451	1,073	191,401	307	903	556	347	145,621
Yates	498	1,156	206,008	293	847	513	334	137,714

\*Data partially estimated.

Table 7  
INCOME MAINTENANCE  
Cases, recipients and expenditures, by social services district  
December 1991

Social Services District	Aid to Families With Dependent Children									
	Basic Program					Unemployed Parent Program				
	Cases	Recipients	Children	Adults	Expenditures	Cases	Recipients	Children	Adults	Expenditures
New York State	379,151	1,046,596	702,726	343,870	\$203,326,333	14,369	61,146	34,304	26,842	\$9,006,913
New York City*	253,008	692,601	467,364	225,237	127,895,000	3,626	15,667	8,939	6,728	2,212,000
Rest of State	126,143	353,995	235,362	118,633	75,431,333	10,743	45,479	25,365	20,114	6,794,913
Albany	3,690	10,428	6,978	3,450	2,099,461	177	715	394	321	101,442
Allegany	886	2,509	1,594	915	488,525	204	862	483	379	132,490
Broome	2,441	6,826	4,437	2,389	1,375,172	424	1,834	1,037	797	274,102
Cattaraugus	1,026	2,940	1,916	1,024	475,904	215	910	514	396	111,895
Cayuga	1,023	2,751	1,737	1,014	458,244	165	613	328	285	86,477
Chautauqua	2,546	7,319	4,760	2,559	1,208,157	337	1,444	812	632	194,419
Chemung	1,411	3,987	2,606	1,381	678,183	253	1,050	573	477	133,044
Chenango	509	1,533	1,002	531	228,166	96	415	231	184	52,044
Clinton	906	2,474	1,601	873	395,590	147	560	293	267	77,321
Columbia	659	1,826	1,178	648	330,878	82	338	179	159	44,210
Cortland	527	1,489	969	520	268,158	98	412	233	179	56,845
Delaware	450	1,252	819	433	234,292	89	356	190	166	51,066
Dutchess	2,115	5,751	3,837	1,914	1,142,616	200	848	467	381	134,445
Erie	18,779	52,230	34,401	17,829	9,557,628	1,341	5,935	3,361	2,574	820,232
Essex	448	1,309	839	470	213,784	111	476	257	219	56,849
Franklin	601	1,682	1,058	624	290,513	150	610	325	285	81,530
Fulton	685	1,908	1,231	677	325,517	80	346	198	148	48,387
Genesee	467	1,272	820	452	241,576	43	191	114	77	24,520
Greene	493	1,292	813	479	250,619	36	141	73	68	20,471
Hamilton	17	55	38	17	7,346	6	28	16	12	3,626
Herkimer	568	1,613	1,050	563	278,116	143	611	351	260	84,188
Jefferson	1,493	4,102	2,577	1,525	712,693	289	1,155	608	547	165,592
Lewis	218	690	441	249	101,267	74	329	186	143	42,048
Livingston	628	1,629	1,010	619	305,449	130	480	245	235	71,890
Madison	485	1,383	905	478	229,309	58	232	124	108	30,999
Monroe	15,853	45,743	31,080	14,663	10,950,772	541	2,435	1,442	993	415,389
Montgomery	552	1,660	1,120	540	268,448	62	268	147	121	32,229
Nassau	6,303	16,300	11,151	5,149	4,001,997	125	549	317	232	97,301
Niagara	3,404	9,078	5,830	3,248	1,722,752	284	1,194	660	534	154,571
Oneida	3,195	9,506	6,382	3,124	1,559,800	393	1,782	1,004	778	223,658
Onondaga	7,331	20,972	14,367	6,605	4,179,555	531	2,022	1,110	912	306,491
Ontario	1,014	2,740	1,719	1,021	505,921	122	515	285	230	68,449
Orange	3,314	9,963	6,888	3,075	1,965,657	167	725	412	313	108,911
Orleans	522	1,441	960	481	254,256	72	299	169	130	38,068
Oswego	1,467	4,290	2,793	1,497	733,373	310	1,257	685	572	171,551
Otsego	391	1,136	740	396	224,925	68	296	167	129	43,319
Putnam	218	548	347	201	127,336	10	37	18	19	6,670
Rensselaer	1,687	4,723	3,044	1,679	760,290	229	996	558	438	125,345
Rockland	1,537	4,376	3,013	1,363	1,054,239	105	491	299	192	87,308
St. Lawrence	1,494	4,118	2,550	1,568	767,156	469	1,887	1,014	873	274,152
Saratoga	780	2,199	1,436	763	358,427	81	321	167	154	40,017
Schenectady	1,734	4,929	3,265	1,664	867,899	131	553	314	239	72,546
Schoharie	235	693	436	257	97,876	39	166	91	75	18,983
Schuyler	220	583	358	225	103,726	44	165	82	83	23,412
Seneca	250	695	447	248	117,137	18	74	42	32	10,651
Steuben	1,264	3,579	2,289	1,290	599,391	226	945	508	437	124,308
Suffolk	13,012	36,493	24,612	11,881	9,621,948	690	3,026	1,712	1,314	653,687
Sullivan	873	2,631	1,783	848	410,558	73	323	187	136	35,854
Tioga	545	1,509	957	552	244,704	88	384	216	168	46,760
Tompkins	731	1,948	1,269	679	414,510	114	475	271	204	83,080
Ulster	1,920	5,286	3,502	1,784	1,119,620	150	635	354	281	99,967
Warren	391	1,095	709	386	194,657	39	160	85	75	19,408
Washington	587	1,577	1,008	569	313,655	75	310	166	144	44,964
Wayne	930	2,667	1,770	897	470,857	122	553	317	236	76,741
Westchester	10,799	29,843	20,025	9,818	9,279,401	336	1,419	800	619	350,983
Wyoming	266	737	469	268	128,042	41	166	87	79	17,579
Yates	253	687	426	261	115,285	40	160	87	73	22,429

\*Data partially estimated.

Table 8  
INCOME MAINTENANCE  
Cases, recipients and expenditures, by social services district  
December 1991

Social Services District	Home Relief							
	Total		Family		One-Person	Expenditures		
	Cases	Recipients	Cases	Recipients	Cases	Total	Family	One-Person
New York State	295,847	370,933	65,882	140,968	229,965	\$102,199,331	\$26,772,704	\$75,426,627
New York City*	213,312	268,972	49,754	105,414	163,558	69,325,000	19,645,000	49,680,000
Rest of State	82,535	101,961	16,128	35,554	66,407	32,874,331	7,127,704	25,746,627
Albany	2,372	2,917	395	940	1,977	894,250	189,573	704,677
Allegany	704	948	208	452	496	255,438	78,643	176,795
Broome	2,104	2,736	519	1,151	1,585	770,156	215,937	554,219
Cattaraugus	705	915	161	371	544	210,404	56,459	153,945
Cayuga	433	474	72	113	361	126,158	19,455	106,703
Chautauqua	1,842	2,376	546	1,080	1,296	564,583	192,423	372,160
Chemung	945	1,255	256	566	689	297,216	81,676	215,540
Chenango	268	365	90	187	178	78,883	29,686	49,197
Clinton	689	913	170	394	519	216,504	61,997	154,507
Columbia	390	482	93	185	297	131,574	36,650	94,924
Cortland	447	727	172	452	275	166,627	77,781	88,846
Delaware	373	564	134	325	239	136,818	55,935	80,883
Dutchess	1,457	1,644	211	398	1,246	564,876	93,031	471,845
Erie	13,286	15,313	1,783	3,810	11,503	4,525,754	718,905	3,806,849
Essex	427	505	130	208	297	136,020	43,925	92,095
Franklin	648	835	142	329	506	198,641	49,584	149,057
Fulton	549	739	169	359	380	185,151	67,544	117,607
Genesee	218	272	51	105	167	74,520	18,112	56,408
Greene	313	495	115	297	198	111,535	47,845	63,690
Hamilton	16	18	2	4	14	6,296	296	6,000
Herkimer	262	317	74	129	188	81,093	24,014	57,079
Jefferson	1,032	1,375	284	627	748	350,562	115,179	235,383
Lewis	188	256	53	121	135	56,385	16,883	39,502
Livingston	482	586	116	220	366	159,021	40,442	118,579
Madison	205	332	98	225	107	70,631	37,225	33,406
Monroe	9,158	10,596	1,520	2,958	7,638	4,014,759	733,593	3,281,166
Montgomery	291	439	87	235	204	98,171	35,626	62,545
Nassau	3,637	4,063	557	983	3,080	1,755,067	277,503	1,477,564
Niagara	2,363	2,842	433	912	1,930	821,206	172,135	649,071
Oneida	2,187	2,814	447	1,074	1,740	745,783	190,731	555,052
Onondaga	4,682	5,775	944	2,037	3,738	1,611,534	363,872	1,247,662
Ontario	715	834	131	250	584	241,127	50,065	191,062
Orange	2,060	3,427	462	1,829	1,598	864,697	250,545	614,152
Orleans	317	395	91	169	226	101,470	31,054	70,416
Oswego	847	1,165	268	586	579	286,945	104,619	182,326
Otsego	201	279	75	153	126	77,398	31,368	46,030
Putnam	168	194	42	68	126	108,343	34,249	74,094
Rensselaer	1,031	1,153	103	225	928	309,686	34,342	275,344
Rockland	1,092	2,196	380	1,484	712	532,002	214,063	317,939
St. Lawrence	1,451	1,871	440	860	1,011	501,970	175,158	326,812
Saratoga	372	518	109	255	263	116,999	41,614	75,385
Schenectady	1,084	1,355	229	500	855	398,229	93,123	305,106
Schoharie	196	275	65	144	131	52,914	17,858	35,056
Schuyler	138	167	42	71	96	41,090	13,866	27,224
Seneca	102	137	30	65	72	33,514	10,127	23,387
Steuben	951	1,285	260	594	691	297,834	94,166	203,668
Suffolk	6,398	7,945	1,203	2,750	5,195	3,023,385	643,470	2,379,915
Sullivan	444	637	131	324	313	132,194	50,905	81,289
Tioga	354	462	116	224	238	117,969	41,378	76,591
Tompkins	677	847	199	369	478	264,698	82,944	181,754
Ulster	992	1,209	259	476	733	398,727	100,389	298,338
Warren	151	183	26	58	125	52,219	10,140	42,079
Washington	309	428	107	226	202	108,662	43,131	65,531
Wayne	599	762	153	316	446	207,636	55,098	152,538
Westchester	8,864	9,870	1,067	2,073	7,797	5,074,933	720,699	4,354,234
Wyoming	144	170	44	70	100	45,780	17,369	28,411
Yates	205	309	64	168	141	68,294	23,304	44,990

\*Data partially estimated.



Table 9  
FOOD STAMPS  
Household, persons and value of redeemed ATP's by social services district  
December 1991

Social Services District	Total			Public Assistance			Non-Public Assistance		
	Household	Persons	ATP Value	Household	Persons	ATP Value	Household	Persons	ATP Value
New York State	839,324	1,858,514	\$127,275,467	686,669	1,438,910	\$102,278,541	152,655	419,604	\$24,996,926
New York City	540,303	1,169,257	82,427,967	471,821	978,453	69,953,826	68,482	190,804	12,474,141
Rest of State	299,021	689,257	44,847,500	214,848	460,457	32,324,715	84,173	228,800	12,522,785
Albany	9,197	20,120	1,376,350	5,970	12,286	894,175	3,227	7,834	482,175
Allegany	2,428	6,224	380,318	1,628	3,858	263,834	800	2,366	116,484
Broome	7,311	16,716	1,065,512	4,981	10,628	748,697	2,330	6,088	316,815
Cattaraugus	3,214	8,230	494,504	1,803	4,017	277,311	1,411	4,213	217,193
Cayuga	2,760	7,161	455,176	1,402	3,209	224,656	1,358	3,952	230,520
Chautauqua	6,383	15,620	990,933	4,357	9,950	701,911	2,026	5,670	289,022
Chemung	3,581	8,717	544,397	2,438	5,566	386,868	1,143	3,151	157,529
Chenango	1,655	4,365	267,490	866	2,060	148,327	789	2,305	119,163
Clinton	3,312	7,442	482,962	1,998	3,788	279,850	1,314	3,654	203,112
Columbia	1,857	4,149	268,882	1,120	2,369	173,505	737	1,780	95,377
Cortland	1,608	3,974	251,847	1,042	2,333	166,204	566	1,641	85,643
Delaware	1,566	3,906	239,981	919	2,034	141,222	647	1,872	98,759
Dutchess	4,612	10,169	694,683	3,462	7,398	546,026	1,150	2,771	148,657
Erie	47,170	101,764	7,093,867	35,543	73,810	5,505,963	11,627	27,954	1,587,904
Essex	1,604	3,715	227,779	1,031	2,162	152,240	573	1,553	75,539
Franklin	2,131	5,111	339,916	1,353	2,819	209,429	778	2,292	130,487
Fulton	2,064	4,915	320,634	1,401	2,914	217,284	663	2,001	103,350
Genesee	1,277	3,089	190,078	734	1,585	112,400	543	1,504	77,678
Greene	1,301	2,934	189,596	789	1,633	117,386	512	1,301	72,210
Hamilton	120	309	20,546	44	91	6,312	76	218	14,234
Herkimer	1,893	4,760	293,537	1,046	2,287	161,375	847	2,473	132,162
Jefferson	4,126	10,552	665,549	2,638	5,887	417,487	1,488	4,665	248,062
Lewis	810	2,309	145,835	422	1,038	76,227	388	1,271	69,608
Livingston	1,832	4,093	263,766	1,188	2,424	177,391	644	1,669	86,375
Madison	1,577	3,871	238,367	797	1,724	116,949	780	2,147	121,418
Monroe	30,173	67,745	4,353,369	25,938	55,158	3,723,641	4,235	12,587	629,728
Montgomery	1,773	4,649	299,699	881	1,925	139,586	892	2,724	160,113
Nassau	12,071	24,276	1,526,434	9,466	18,818	1,232,023	2,605	5,458	294,411
Niagara	8,426	18,884	1,249,161	5,747	11,955	870,333	2,679	6,929	378,828
Oneida	9,758	23,245	1,518,525	6,218	13,348	981,003	3,540	9,897	537,522
Onondaga	15,095	36,206	2,429,663	11,433	25,615	1,857,848	3,662	10,591	571,815
Ontario	2,526	5,688	371,548	1,774	3,828	275,101	752	1,860	96,447
Orange	7,696	20,209	1,348,027	5,148	12,249	861,820	2,548	7,960	486,207
Orleans	1,373	3,290	197,337	847	1,801	123,067	526	1,489	74,270
Oswego	3,646	9,740	650,649	2,400	5,745	428,718	1,246	3,995	221,931
Otsego	1,429	3,502	221,472	736	1,575	107,584	693	1,927	113,888
Putnam	398	820	52,734	273	544	38,282	125	276	14,452
Rensselaer	4,787	10,976	738,305	3,072	6,428	478,252	1,715	4,548	260,053
Rockland	4,134	12,624	807,993	2,653	6,388	383,759	1,481	6,236	424,234
St. Lawrence	4,683	11,896	760,904	2,992	6,775	495,375	1,691	5,121	265,529
Saratoga	2,580	6,427	409,189	1,296	2,750	197,333	1,284	3,677	211,856
Schenectady	4,537	10,137	693,429	3,237	6,725	500,933	1,300	3,412	192,496
Schoharie	986	2,434	153,655	483	997	68,472	503	1,437	85,183
Schuyler	598	1,613	99,681	326	771	55,923	272	842	43,758
Seneca	755	1,633	97,388	397	811	55,845	358	822	41,543
Steuben	3,562	9,205	601,394	2,319	5,342	390,212	1,243	3,863	211,182
Suffolk	23,282	52,876	3,201,892	18,609	41,602	2,605,353	4,673	11,274	596,539
Sullivan	2,268	5,688	355,309	1,415	3,291	228,238	853	2,397	127,071
Tioga	1,415	3,765	232,267	843	1,964	137,610	572	1,801	94,657
Tompkins	2,156	4,757	306,670	1,503	3,057	212,543	653	1,700	94,127
Ulster	4,682	10,277	616,698	3,187	6,611	418,663	1,495	3,666	198,035
Warren	1,468	3,563	210,438	726	1,438	94,853	742	2,125	115,585
Washington	1,512	3,722	229,791	919	1,945	133,498	593	1,777	96,293
Wayne	2,418	5,565	364,487	1,646	3,665	266,738	772	1,900	97,749
Westchester	21,611	45,159	2,972,494	18,463	37,454	2,594,132	3,148	7,705	378,362
Wyoming	883	2,188	132,343	434	909	64,590	449	1,279	67,753
Yates	951	2,283	142,050	495	1,103	80,358	456	1,180	61,692

Table 10 (Part I)  
 MEDICAL ASSISTANCE  
 Number of Medical Assistance Eligibles by Category of Eligibility by Social Services District  
 December 1991

Social Services District	Medical and Subsistence						
	Total M.A. Eligibles	SSI Aged	SSI Blind and Disabled	ADC Adults	ADC Children	HR Adults	HR Children
New York State	2,656,962	158,200	295,797	347,438	789,963	272,055	84,918
New York City	1,668,541	112,076	168,570	220,292	511,968	196,496	62,145
Rest of State	988,421	46,124	127,227	127,146	277,995	75,559	22,773
Albany	25,025	1,101	3,393	3,269	7,705	2,335	622
Allegany	7,881	290	849	1,182	2,120	611	247
Broome	22,510	961	2,523	2,926	5,924	2,071	696
Cattaraugus	11,067	522	1,193	1,261	2,552	691	233
Cayuga	8,706	514	874	1,177	2,208	405	84
Chautauqua	20,967	795	2,285	2,899	5,852	1,707	647
Chemung	12,683	332	1,855	1,639	3,417	869	309
Chenango	5,918	280	646	661	1,321	244	127
Clinton	9,636	589	1,273	990	1,972	665	230
Columbia	5,940	347	869	757	1,503	363	130
Cortland	5,482	248	714	679	1,330	423	251
Delaware	5,105	359	686	538	1,034	362	210
Dutchess	16,701	853	2,591	2,082	4,604	1,364	276
Erie	126,133	4,489	16,308	19,071	40,518	12,748	2,772
Essex	4,996	232	514	594	1,096	374	107
Franklin	7,122	393	947	830	1,444	614	189
Fulton	7,296	371	938	747	1,501	492	248
Genesee	4,709	242	586	466	974	202	70
Greene	4,372	265	560	522	965	274	136
Hamilton	416	29	45	25	46	13	2
Herkimer	7,004	326	962	741	1,459	254	60
Jefferson	13,459	527	1,716	1,913	3,540	961	392
Lewis	3,397	151	403	363	649	173	62
Livingston	5,249	170	598	736	1,330	396	148
Madison	5,257	293	679	516	1,102	193	113
Monroe	87,148	3,264	9,660	13,700	34,277	7,974	2,136
Montgomery	6,388	344	885	574	1,346	265	151
Nassau	59,297	4,900	9,086	5,218	12,247	3,231	723
Niagara	25,059	945	2,714	3,397	7,109	2,363	618
Oneida	31,421	1,383	4,683	3,512	8,014	2,086	702
Onondaga	51,485	1,622	6,395	6,788	16,921	4,283	1,413
Ontario	7,365	324	835	1,137	2,203	657	168
Orange	30,414	1,391	3,055	3,054	7,702	1,968	1,289
Orleans	4,718	173	545	542	1,167	276	103
Oswego	14,462	515	1,463	1,898	3,733	788	280
Otsego	5,834	360	788	502	981	192	110
Putnam	2,521	112	415	222	388	166	36
Rensselaer	14,712	500	1,864	1,854	3,808	1,016	170
Rockland	20,391	1,522	2,317	1,455	3,407	1,024	1,090
St. Lawrence	16,271	897	1,978	2,109	3,615	1,334	391
Saratoga	9,793	434	1,475	827	1,661	320	139
Schenectady	14,727	549	1,970	1,817	3,996	1,065	372
Schoharie	3,322	212	401	315	558	165	64
Schuyler	2,281	135	234	278	467	127	20
Seneca	2,487	124	343	257	516	92	35
Steuben	12,321	445	1,715	1,607	3,085	931	394
Suffolk	84,623	4,673	12,699	12,347	27,734	4,400	1,191
Sullivan	9,074	560	1,524	914	2,087	418	217
Tioga	5,103	155	489	675	1,249	352	142
Tompkins	6,969	217	873	780	1,548	602	225
Ulster	15,167	667	2,470	2,013	4,221	1,040	292
Warren	5,118	283	805	437	892	150	49
Washington	5,486	332	745	641	1,263	302	108
Wayne	7,565	435	1,099	1,020	2,234	538	186
Westchester	74,148	3,733	9,081	10,074	22,299	8,305	1,456
Wyoming	3,026	139	372	302	563	116	41
Yates	2,694	100	242	296	538	209	101

Table 10 (Part II)  
**MEDICAL ASSISTANCE**  
 Number of Medical Assistance Eligibles by Category of Eligibility by Social Services District  
 December 1991

Medical Only							Social Services District
Aged	Blind & Disabled	ADC Related Adults	ADC Related Children	HR Related Adults	HR Related Children	Other	
147,487	63,866	88,313	270,916	61,470	74,635	1,904	New York State
68,887	28,424	44,430	167,771	42,958	42,891	1,633	New York City
78,600	35,442	43,883	103,145	18,512	31,744	271	Rest of State
2,237	699	802	2,042	252	566	2	Albany
417	233	461	978	202	290	1	Allegany
2,020	776	982	2,395	514	722	0	Broome
918	304	759	1,825	362	445	2	Cattaraugus
694	298	670	1,253	177	347	5	Cayuga
1,534	549	1,174	2,201	439	868	17	Chautauqua
887	391	719	1,691	217	357	0	Chemung
419	200	454	1,033	182	319	32	Chenango
660	357	733	1,495	304	368	0	Clinton
578	254	275	568	80	216	0	Columbia
396	162	294	654	89	241	1	Cortland
391	142	364	733	92	194	0	Delaware
1,492	667	609	1,287	118	758	0	Dutchess
7,675	3,799	3,907	10,425	2,157	2,263	1	Erie
461	213	333	789	127	156	0	Essex
444	313	460	993	192	303	0	Franklin
669	287	500	1,090	172	281	0	Fulton
439	180	384	827	72	209	58	Genesee
482	137	222	549	120	139	1	Greene
39	38	28	103	43	5	0	Hamilton
678	236	478	1,102	236	433	39	Herkimer
814	382	761	1,793	274	346	40	Jefferson
234	138	284	648	107	185	0	Lewis
433	176	323	712	70	157	0	Livingston
460	165	423	903	151	259	0	Madison
4,844	2,135	1,900	5,513	626	1,114	5	Monroe
580	350	369	1,024	184	295	21	Montgomery
8,642	3,291	2,879	6,817	725	1,528	10	Nassau
1,841	763	1,235	2,926	530	614	4	Niagara
2,478	974	1,600	3,731	1,054	1,204	0	Oneida
3,068	1,673	1,841	5,389	973	1,116	3	Onondaga
608	192	315	749	68	101	8	Ontario
1,879	1,185	1,501	3,612	1,056	2,722	0	Orange
350	193	332	757	95	184	1	Orleans
779	444	1,158	2,429	366	609	0	Oswego
485	215	493	1,100	193	415	0	Otsego
444	167	147	306	57	61	0	Putnam
1,517	596	867	1,834	268	417	1	Rensselaer
1,828	816	787	1,608	1,105	3,432	0	Rockland
995	435	1,095	2,278	461	683	0	St. Lawrence
1,048	639	788	1,628	312	522	0	Saratoga
1,542	540	619	1,617	327	313	0	Schenectady
234	122	309	580	132	230	0	Schoharie
166	83	192	372	75	132	0	Schuyler
248	113	182	426	38	113	0	Seneca
755	315	673	1,500	383	517	1	Steuben
7,140	3,964	2,527	5,866	682	1,398	2	Suffolk
655	342	480	1,245	174	454	4	Sullivan
356	154	353	809	162	206	1	Tioga
396	263	472	952	254	384	3	Tompkins
1,258	538	584	1,339	223	519	3	Ulster
543	293	468	869	121	208	0	Warren
510	212	316	816	86	155	0	Washington
539	211	366	736	65	133	3	Wayne
6,884	2,937	2,134	5,219	766	1,258	2	Westchester
311	103	276	584	104	115	0	Wyoming
206	88	226	425	98	165	0	Yates

Table 11 (Part I)  
 MEDICAL ASSISTANCE  
 Medical Assistance expenditures by major types of care  
 December 1991

Social Services District	Total Medical Expenditures	Hospital Inpatient	Hospital Outpatient	Free Standing Clinic	Skilled Nursing Facilities	Intermediate Care Facilities	Personal Care	Home Health Services
New York State	\$1,288,794,582	\$455,243,371	\$91,271,677	\$44,469,375	\$311,506,631	\$23,283,601	\$145,361,054	\$43,212,051
New York City	868,542,839	363,023,800	59,391,519	25,861,793	161,527,112	11,220,114	110,588,201	28,206,965
Rest of State	420,251,743	92,219,571	31,880,158	18,607,582	149,979,519	12,063,487	34,772,853	15,005,086
Albany	12,044,229	3,360,393	583,994	1,101,261	4,128,456	133,937	450,742	467,681
Allegany	1,766,077	466,223	113,778	53,711	554,211	18,531	99,394	62,770
Broome	8,059,641	1,542,613	600,619	147,214	3,385,996	158,925	444,505	639,205
Cattaraugus	2,870,829	621,724	131,506	151,899	1,008,640	51,049	122,518	190,233
Cayuga	1,708,045	(137,673)	97,932	157,529	977,227	(309)	33,171	38,911
Chautauqua	5,330,485	913,537	403,890	330,144	1,989,442	155,291	428,876	69,699
Chemung	3,298,378	180,333	280,763	122,960	1,380,123	139,155	108,364	313,368
Chenango	1,646,957	295,504	112,346	79,727	625,250	0	48,493	144,653
Clinton	2,169,647	596,920	95,137	77,167	809,471	34,405	42,824	8,163
Columbia	2,721,381	438,677	35,463	130,037	1,687,121	79,667	44,016	44,377
Cortland	1,570,190	451,398	54,858	69,352	407,470	15,314	99,327	69,939
Delaware	2,059,232	417,036	80,868	100,727	947,630	25,865	33,892	139,133
Dutchess	8,687,471	2,279,725	270,523	555,813	3,350,285	456,781	498,490	96,813
Erie	43,364,494	11,534,879	4,722,000	2,348,680	10,976,667	883,572	4,179,973	1,097,406
Essex	1,338,282	204,860	59,376	76,997	633,967	3,366	61,902	18,806
Franklin	2,577,214	325,725	121,295	134,047	669,286	36,670	353,083	470,655
Fulton	2,587,758	388,531	177,216	77,620	1,123,850	197,332	59,273	129,767
Genesee	1,740,269	265,878	81,168	83,840	703,490	67,460	75,217	174,106
Greene	1,673,773	228,416	34,653	68,957	941,275	12,369	91,213	29,414
Hamilton	121,281	14,561	1,461	3,352	52,809	0	17,243	12,986
Herkimer	2,310,035	305,531	132,841	49,667	1,265,584	8,786	42,825	35,662
Jefferson	4,020,762	980,942	165,561	281,775	1,441,462	53,937	86,100	200,611
Lewis	1,023,458	226,187	32,314	39,211	527,125	6,262	8,341	7,111
Livingston	1,516,709	329,433	85,566	59,269	712,036	17,174	9,569	12,726
Madison	1,847,613	490,917	90,706	25,203	813,726	18,815	0	90,503
Monroe	29,088,447	4,619,242	3,322,567	1,583,429	9,023,984	775,690	321,324	3,865,231
Montgomery	2,906,907	484,593	199,267	51,231	1,332,425	226,863	27,302	154,557
Nassau	49,523,064	10,705,395	1,824,245	1,108,574	20,433,407	1,869,766	7,770,273	468,280
Niagara	7,928,818	2,186,156	730,738	310,342	2,415,483	183,592	646,283	165,164
Oneida	9,499,579	2,166,852	655,384	408,057	3,774,154	114,717	212,262	332,008
Onondaga	19,824,664	4,644,934	2,052,413	1,009,598	7,269,219	140,741	469,882	1,034,201
Ontario	2,632,002	453,615	144,527	55,517	1,289,088	32,516	83,882	116,785
Orange	11,270,398	3,406,670	516,935	555,950	3,347,509	313,376	770,684	75,376
Orleans	1,192,606	198,293	67,433	89,720	484,639	70	33,910	71,611
Oswego	3,912,539	1,061,046	305,585	187,812	1,303,913	7,305	124,660	182,819
Otsego	1,590,064	233,505	137,020	45,949	739,355	13,594	28,009	39,803
Putnam	2,140,179	390,646	117,765	120,817	907,453	150,016	100,600	115,121
Rensselaer	5,983,588	1,007,147	452,477	251,643	2,840,585	108,492	276,625	100,314
Rockland	14,022,733	2,710,623	3,488,845	197,997	4,452,369	640,525	897,760	126,288
St. Lawrence	4,112,489	901,446	308,411	119,576	1,259,466	46,552	228,325	231,094
Saratoga	3,712,883	235,701	120,924	215,159	2,058,218	157,902	118,903	98,336
Schenectady	4,170,516	(536,506)	461,436	417,760	2,042,006	108,678	463,824	283,168
Schoharie	1,115,439	355,822	63,702	65,907	312,870	16,543	30,277	85,249
Schuyler	603,998	(47,879)	78,017	44,084	310,078	42,053	0	23,737
Seneca	877,139	141,291	47,658	92,251	380,986	12,416	(14,054)	8,576
Steuben	3,491,611	828,362	233,303	198,407	1,384,742	52,722	24,775	120,540
Suffolk	49,593,004	12,530,291	2,028,016	2,170,275	17,124,523	2,082,584	5,118,317	1,418,459
Sullivan	4,078,010	1,156,500	199,810	301,504	1,447,104	192,199	121,488	63,989
Tioga	1,628,489	286,498	48,636	39,973	668,542	19,202	15,036	298,403
Tompkins	2,224,924	680,669	71,139	152,598	780,213	43,247	19,115	54,719
Ulster	6,675,691	1,237,903	352,019	557,494	2,533,613	202,664	692,122	32,251
Warren	1,100,283	(508,407)	121,572	103,047	697,983	13,624	74,567	210,164
Washington	1,502,122	68,007	146,102	78,193	649,221	52,616	57,832	56,700
Wayne	2,316,613	401,548	186,641	110,925	1,031,591	21,771	26,782	95,111
Westchester	51,692,741	13,111,376	4,701,072	1,568,938	15,763,072	1,835,974	8,570,508	476,611
Wyoming	1,044,918	180,143	50,304	51,303	519,095	13,031	19,398	26,414
Yates	741,075	205,819	80,361	17,393	290,014	(1,908)	2,831	9,142

Table 11 (Part II)  
 MEDICAL ASSISTANCE  
 Medical Assistance Expenditures by Major Types of Care  
 December 1991

Drugs and Sickroom Supplies	Physicians	Dental	Transportation	Lab. and X-Ray	Family Planning	All Other	Social Services District
\$71,322,350	\$23,854,006	\$9,665,149	\$14,224,777	\$4,119,300	\$5,167,533	\$46,093,707	New York State
45,739,089	16,194,445	7,040,446	7,944,140	2,760,679	3,160,464	25,884,072	New York City
25,583,261	7,659,561	2,624,703	6,280,637	1,358,621	2,007,069	20,209,635	Rest of State
623,072	163,533	50,285	243,107	31,724	42,199	663,845	Albany
203,036	57,566	13,177	18,642	8,207	11,026	85,805	Allegany
589,238	191,384	60,031	59,678	37,684	24,293	178,256	Broome
269,842	117,279	28,963	37,492	15,556	14,653	109,475	Cattaraugus
222,483	94,764	37,629	24,737	14,514	22,765	124,365	Cayuga
472,000	155,207	52,109	70,080	30,149	23,117	236,944	Chautauqua
344,484	98,272	41,256	8,063	21,891	39,879	219,467	Chemung
142,562	68,336	9,649	39,261	8,804	15,183	57,189	Chenango
299,068	40,535	28,842	6,662	20,309	22,787	87,357	Clinton
130,583	53,199	6,233	9,825	6,757	6,219	49,207	Columbia
137,841	55,585	20,747	45,953	10,008	43,489	88,909	Cortland
123,067	41,930	15,510	28,498	7,492	3,344	94,240	Delaware
422,162	122,995	33,777	155,270	24,259	79,130	341,448	Dutchess
3,173,556	760,644	345,384	643,881	132,929	226,753	2,338,170	Erie
156,266	41,471	7,283	11,018	6,475	7,251	49,244	Essex
231,602	70,939	10,135	35,990	11,502	11,519	94,766	Franklin
193,858	67,543	22,199	46,201	8,694	11,280	84,394	Fulton
97,156	46,575	12,088	15,128	4,427	8,564	105,172	Genesee
93,433	34,283	10,695	22,130	8,545	8,627	89,763	Greene
12,384	3,058	849	42	307	136	2,093	Hamilton
213,212	61,550	17,013	18,306	7,593	17,163	134,302	Herkimer
323,531	158,930	32,742	32,532	17,288	91,506	153,852	Jefferson
77,960	29,012	9,483	15,734	4,004	4,739	35,911	Lewis
126,603	38,550	11,982	34,083	6,924	21,067	51,727	Livingston
140,888	54,810	13,801	24,613	8,797	11,193	63,641	Madison
1,806,941	416,079	80,218	672,135	208,905	202,862	2,189,840	Monroe
184,587	53,475	19,807	66,536	8,994	15,850	81,420	Montgomery
1,950,364	312,885	186,515	474,358	50,025	55,498	2,313,479	Nassau
614,950	202,306	69,815	157,589	27,664	53,375	165,361	Niagara
836,792	252,316	91,703	71,418	49,944	129,334	404,638	Oneida
996,847	444,057	74,912	312,967	55,970	129,873	1,189,050	Onondaga
194,091	78,508	16,159	53,705	16,308	12,109	85,192	Ontario
803,182	266,490	124,739	301,319	41,079	41,556	705,533	Orange
106,779	43,480	4,670	7,941	8,730	13,805	61,525	Orleans
307,062	126,413	31,299	87,324	10,677	38,798	137,826	Oswego
155,191	53,631	18,536	29,496	4,981	11,944	79,050	Otsego
81,283	21,780	2,348	54,902	4,028	2,913	70,507	Putnam
376,901	110,878	30,172	98,410	15,098	27,444	287,402	Rensselaer
512,547	276,989	89,464	110,281	21,389	13,075	484,581	Rockland
471,107	162,301	42,280	47,637	28,975	24,063	241,256	St. Lawrence
316,472	94,036	20,366	24,063	15,047	16,014	221,742	Saratoga
375,081	108,954	11,737	73,457	17,899	27,917	315,105	Schenectady
105,309	20,752	8,605	8,989	6,332	8,520	26,562	Schoharie
64,634	23,977	7,032	13,406	2,343	3,105	39,411	Schuyler
90,195	21,652	6,808	33,544	2,953	4,658	48,205	Seneca
274,426	123,799	29,734	29,863	20,047	30,291	140,600	Steuben
2,395,910	680,338	364,058	770,075	94,206	115,996	2,699,956	Suffolk
239,279	85,447	25,383	42,067	14,190	18,040	171,010	Sullivan
103,057	43,004	8,816	18,685	6,708	5,185	66,744	Tioga
165,873	82,628	19,407	37,542	9,273	28,319	80,182	Tompkins
404,247	133,847	34,659	61,392	25,703	37,367	370,410	Ulster
174,223	32,999	6,290	7,475	6,016	6,598	154,132	Warren
165,247	46,701	15,084	20,567	6,120	7,460	132,175	Washington
181,518	51,774	13,872	41,044	12,499	16,744	124,791	Wayne
2,166,535	608,965	260,650	888,217	102,762	128,202	1,509,848	Westchester
82,480	29,743	8,638	12,748	3,784	3,263	44,574	Wyoming
60,264	21,407	9,065	4,559	5,133	9,009	27,986	Yates

Table 12  
**SUPPLEMENTAL SECURITY INCOME**  
 Recipients, total program expenditures, federal and state shares, by social services district  
 December 1991

Social Services District	Recipients	Expenditures		
		Total	Federal	State
New York State*	444,309	\$153,678,733	\$117,595,146	\$36,083,587
New York City	269,273	97,550,041	77,818,474	19,731,567
Rest of State	163,493	53,681,522	38,500,584	15,180,938
Albany	4,223	1,391,662	966,656	425,006
Allegany	1,039	344,149	259,824	84,325
Broome	3,377	1,075,449	784,759	290,690
Cattaraugus	1,692	512,533	374,457	138,076
Cayuga	1,297	421,273	273,233	148,040
Chautauqua	2,977	997,753	732,290	265,463
Chemung	2,020	666,639	501,347	165,292
Chenango	857	236,302	173,517	62,785
Clinton	1,779	526,708	393,867	132,841
Columbia	1,177	382,803	258,510	124,293
Cortland	917	305,998	216,319	89,679
Delaware	1,023	299,299	212,605	86,694
Dutchess	3,286	1,088,256	677,882	410,374
Erie	19,197	6,604,704	5,012,370	1,592,334
Essex	740	211,449	137,756	73,693
Franklin	1,259	359,094	253,511	105,583
Fulton	1,260	368,839	247,550	121,289
Genesee	799	237,057	170,292	66,765
Greene	766	231,852	166,864	64,988
Hamilton	71	18,072	13,950	4,122
Herkimer	1,257	373,426	268,294	105,132
Jefferson	2,160	659,491	482,049	177,442
Lewis	526	161,563	109,511	52,052
Livingston	707	207,783	152,616	55,167
Madison	929	281,889	201,228	80,661
Monroe	12,034	4,199,858	3,036,427	1,163,431
Montgomery	1,162	344,307	237,907	106,400
Nassau	13,326	4,392,538	3,088,476	1,304,062
Niagara	3,507	1,151,921	807,086	344,835
Oneida	5,568	1,847,240	1,369,650	477,590
Onondaga	7,543	2,494,955	1,900,269	594,686
Ontario	1,109	332,284	237,094	95,190
Orange	4,207	1,321,792	980,741	341,051
Orleans	691	211,167	160,244	50,923
Oswego	1,870	591,502	437,287	154,215
Otsego	1,103	326,290	221,181	105,109
Putnam	533	179,836	116,752	63,084
Rensselaer	2,307	744,026	527,342	216,684
Rockland	3,705	1,300,570	818,075	482,495
St. Lawrence	2,749	850,598	659,932	190,666
Saratoga	1,735	514,919	364,773	150,146
Schenectady	2,482	808,638	587,098	221,540
Schoharie	571	172,011	107,306	64,705
Schuyler	359	108,693	68,527	40,166
Seneca	449	143,891	92,613	51,278
Steuben	2,081	629,753	463,874	165,879
Suffolk	16,435	5,773,612	3,977,492	1,796,120
Sullivan	2,048	730,495	444,432	286,063
Tioga	626	192,885	147,160	45,725
Tompkins	1,070	346,790	246,404	100,386
Ulster	2,977	965,445	695,621	269,824
Warren	1,103	303,434	221,284	82,150
Washington	1,058	327,410	235,021	92,389
Wayne	1,436	419,782	302,293	117,489
Westchester	11,482	3,758,115	2,743,970	1,014,145
Wyoming	491	134,308	93,230	41,078
Yates	341	98,414	69,766	28,648
Mental Hygiene	11,543	2,447,170	1,276,088	1,171,082

\* Only NYS includes Mental Hygiene

Table 13

## SUPPLEMENTAL SECURITY INCOME

## SSI Recipients by Living Arrangement and Location

December 1991

Living Arrangement	New York State	New York City	Rest of State	Mental Hygiene
Living Alone	233,472	152,899	80,537	36
Living with Others	130,092	81,417	48,659	16
Living in Household of Another	30,442	19,179	11,254	9
Congregate Care Level I	6,714	778	779	5,157
Congregate Care Level II	30,306	11,281	19,020	5
Congregate Care Level III	718	251	467	0
Title XIX Institution	19,001	7,209	5,380	6,412
Total	450,745	273,014	166,096	11,635
Adjustments *	(6,436)			
Adjusted Total	444,309			

Table 14

## SUPPLEMENTAL SECURITY INCOME

## SSI Recipients by Living Arrangement and Category of Assistance

December 1991

Living Arrangement	Total	Category of Assistance		
		Aged	Blind	Disabled
Living Alone	233,472	85,652	2,065	145,755
Living with Others	130,092	16,502	1,436	112,154
Living in Household of Another	30,442	12,995	286	17,161
Congregate Care Level I	6,714	828	40	5,846
Congregate Care Level II	30,306	6,976	155	23,175
Congregate Care Level III	718	3	3	712
Title XIX Institution	19,001	4,924	132	13,945
Total	450,745	127,880	4,117	318,748
Adjustments *	(6,436)			
Adjusted Total	444,309			

\* Adjustments represent the net change in caseload made during the month but effective in prior periods.

Table 15

## PUBLIC ASSISTANCE

Reasons for openings for Home Relief and  
Aid to Families with Dependent Children cases

NEW YORK STATE

October - December 1991

Program	Total cases opened	Transferred from another program	Cases added to subsistence rolls				
			Total	Percentage distribution by reason			
				Health	Family	Financial	Legal
Total	NA	NA	NA	NA	NA	NA	NA
HR	NA	NA	NA	NA	NA	NA	NA
AFDC	NA	NA	NA	NA	NA	NA	NA

\*\* INFORMATION TO BE SUPPLIED AT A LATER DATE! \*\*

Table 16

## PUBLIC ASSISTANCE

Reasons for closings for Home Relief and  
Aid to Families with Dependent Children cases

NEW YORK STATE

October - December 1991

Program	Total cases closed	Transferred to another program	Cases that left subsistence rolls				
			Total	Percentage distribution by reason			
				Health	Family	Financial	Legal
Total	NA	NA	NA	NA	NA	NA	NA
HR	NA	NA	NA	NA	NA	NA	NA
AFDC	NA	NA	NA	NA	NA	NA	NA



Table 17  
EMERGENCY PROGRAMS  
Monthly average number of cases and recipients receiving assistance and  
total expenditures in the EAF and EAA programs, by social service district  
October - December 1991

Social Services District	Emergency Assistance to Families			Emergency Assistance to Adults	
	Monthly Average		Quarterly	Monthly Average	Quarterly
	Families	Recipients	Expenditures	Cases/Recipients	Expenditures
New York State	NA	NA	\$22,362,939	NA	\$1,641,449
New York City	NA	NA	17,221,762	NA	504,524
Rest of State	3,805	12,788	5,141,177	1,348	1,136,925
Albany	40	131	55,013	43	44,614
Allegany	14	60	15,726	10	6,365
Broome	44	175	44,223	12	10,822
Cattaraugus	26	103	21,586	10	5,223
Cayuga	27	112	25,403	1	911
Chautauqua	44	169	28,260	7	4,291
Chemung	58	210	62,526	10	7,766
Chenango	11	40	8,706	0	0
Clinton	23	85	15,474	2	1,757
Columbia	8	29	8,964	2	3,823
Cortland	31	118	32,124	5	4,095
Delaware	28	106	22,919	5	2,813
Dutchess	49	109	74,432	9	10,395
Erie	231	769	386,304	162	106,633
Essex	4	15	4,255	3	3,541
Franklin	23	66	19,046	1	848
Fulton	17	61	16,368	6	5,927
Genesee	14	51	10,977	1	1,087
Greene	22	77	21,446	5	3,549
Hamilton	1	4	3,210	0	0
Herkimer	10	39	9,020	1	1,130
Jefferson	23	86	23,844	8	8,831
Lewis	8	30	6,836	0	0
Livingston	39	127	42,220	5	4,756
Madison	19	66	18,116	1	734
Monroe	310	1,045	369,023	213	169,515
Montgomery	28	104	23,791	7	4,470
Nassau	90	282	169,263	52	63,926
Niagara	82	292	79,940	11	5,839
Oneida	117	432	111,846	33	24,144
Onondaga	364	1,210	546,261	205	108,748
Ontario	27	93	28,252	7	7,348
Orange	39	150	46,316	28	29,192
Orleans	21	79	19,314	3	1,839
Oswego	32	121	29,542	4	2,695
Otsego	20	76	25,710	4	4,120
Putnam	5	19	26,642	3	5,045
Rensselaer	9	46	9,112	12	12,589
Rockland	18	65	68,615	14	15,348
St. Lawrence	37	145	32,663	12	7,534
Saratoga	74	258	79,110	3	3,093
Schenectady	75	243	82,621	11	8,510
Schoharie	21	63	26,906	4	2,486
Schuyler	4	12	2,752	0	0
Seneca	23	6	1,923	0	0
Steuben	32	119	26,599	2	1,740
Suffolk	493	1,838	840,237	297	234,759
Sullivan	11	46	12,711	7	4,248
Tioga	23	93	24,866	2	1,316
Tompkins	32	103	42,021	17	18,296
Ulster	11	39	16,063	6	4,216
Warren	17	70	18,652	2	2,334
Washington	19	66	19,615	3	24,807
Wayne	20	73	19,528	2	442
Westchester	920	2,696	1,347,581	72	125,841
Wyoming	7	23	8,752	0	45
Yates	10	43	7,952	3	2,529

N. A. Not available

Table 18 (Part I)  
**MEDICAL ASSISTANCE**  
 Monthly Average of Medical Assistance Beneficiaries by Category of Eligibility  
 by Social Services District

OCTOBER - DECEMBER 1991

Social Services District	Monthly Average Beneficiaries	Federally Financially Participating					
		Medical and Subsistence					
		Total FFP	SSI Aged	SSI Blind & Disabled	ADC Adults	ADC Children	HR Children
New York State	1,493,884	1,313,073	110,163	205,865	202,368	380,586	39,222
New York City	946,930	814,997	77,553	117,538	131,660	252,330	27,987
Rest of State	546,954	498,076	32,610	88,327	70,708	128,256	11,235
Albany	14,144	12,777	816	2,440	1,757	3,326	279
Allegany	4,078	3,678	217	572	608	930	123
Broome	12,735	11,375	723	1,827	1,618	2,677	353
Cattaraugus	5,849	5,300	411	845	631	1,149	115
Cayuga	4,902	4,566	385	606	645	1,072	55
Chautauqua	10,496	9,402	599	1,550	1,484	2,336	298
Chemung	8,531	7,950	266	1,382	856	2,716	262
Chenango	3,233	2,982	218	463	345	598	63
Clinton	5,146	4,682	441	885	542	905	113
Columbia	3,064	2,848	239	546	333	580	57
Cortland	3,051	2,793	201	504	348	621	126
Delaware	2,849	2,622	274	465	317	497	126
Dutchess	9,447	8,668	599	1,841	1,145	2,051	104
Erie	69,218	61,790	3,184	11,323	10,667	18,627	1,278
Essex	2,652	2,404	175	383	317	463	49
Franklin	3,736	3,377	297	720	441	594	66
Fulton	3,967	3,635	271	684	397	687	103
Genesee	2,609	2,420	184	407	273	445	35
Greene	2,350	2,166	177	340	264	429	55
Hamilton	217	201	20	26	11	19	1
Herkimer	3,747	3,456	242	651	377	632	40
Jefferson	6,993	6,364	403	1,193	900	1,466	188
Lewis	1,709	1,569	109	283	163	250	32
Livingston	2,857	2,631	138	410	417	647	70
Madison	2,968	2,782	226	465	265	495	60
Monroe	51,027	45,923	2,455	7,065	9,118	16,808	1,101
Montgomery	3,689	3,406	251	632	321	644	94
Nassau	33,530	31,520	3,026	6,123	2,914	5,816	310
Niagara	13,840	12,286	756	1,936	1,921	3,104	287
Oneida	16,312	14,772	1,028	3,039	1,795	3,192	325
Onondaga	27,469	25,002	1,117	4,195	3,797	7,633	645
Ontario	3,950	3,585	259	593	589	919	77
Orange	16,446	15,032	978	2,031	1,787	3,613	760
Orleans	2,609	2,404	120	396	327	505	59
Oswego	7,084	6,540	389	964	908	1,568	139
Otsego	3,006	2,847	272	527	245	455	45
Putnam	1,498	1,368	83	317	123	175	15
Rensselaer	7,956	7,264	363	1,296	972	1,596	77
Rockland	10,966	10,063	981	1,683	775	1,615	514
St. Lawrence	8,330	7,517	713	1,325	1,039	1,493	189
Saratoga	5,656	5,331	316	994	462	744	61
Schenectady	8,512	7,740	386	1,423	1,033	1,794	193
Schoharie	1,661	1,540	156	274	160	233	33
Schuyler	1,372	1,261	116	190	160	282	21
Seneca	1,417	1,351	97	268	125	232	23
Steuben	6,368	5,817	336	1,197	780	1,346	173
Suffolk	48,850	46,103	3,137	8,926	6,885	13,261	659
Sullivan	4,852	4,546	379	1,105	457	811	98
Tioga	2,359	2,160	111	327	290	472	55
Tompkins	3,689	3,287	147	639	424	720	126
Ulster	9,043	8,361	449	1,701	1,185	2,219	154
Warren	3,043	2,894	222	559	264	450	30
Washington	3,226	3,008	253	548	359	643	74
Wayne	4,196	3,925	361	787	591	1,003	91
Westchester	42,440	36,818	2,383	6,272	5,570	10,334	681
Wyoming	1,690	1,584	102	267	166	253	22
Yates	1,504	1,344	83	175	185	288	59

Table 18 (Part II)  
 MEDICAL ASSISTANCE  
 Monthly Average of Medical Assistance Beneficiaries by Category of Eligibility  
 by Social Services District

OCTOBER - DECEMBER 1991

Federally Financially Participating (cont.)					Federally Non-Participating			Services District
Medical Only					Total FNP	Medical and Subsistence HR Adults	Medical Only HR-Related Adults	
Aged	Blind & Disabled	ADC-Related Adults	ADC-Related Children	HR-Related Children				
122,728	49,433	53,943	128,246	35,326	186,895	156,924	31,349	New York State
56,261	22,572	30,157	84,430	20,829	135,369	114,315	21,756	New York City
66,467	26,861	23,786	43,816	14,497	51,526	42,609	9,593	Rest of State
1,989	556	518	981	324	1,449	1,282	190	Albany
346	188	238	395	134	419	335	94	Allegany
1,765	581	657	1,092	377	1,451	1,170	335	Broome
716	229	363	771	183	575	398	193	Cattaraugus
559	236	353	589	182	355	270	90	Cayuga
1,288	402	488	815	336	1,151	954	207	Chautauqua
739	290	348	1,042	227	619	525	110	Chemung
339	141	285	484	136	279	159	89	Chenango
523	261	386	593	154	499	350	160	Clinton
496	200	138	206	103	229	191	44	Columbia
339	139	180	301	105	280	235	50	Cortland
326	106	182	300	94	239	194	49	Delaware
1,309	507	322	512	394	815	751	76	Dutchess
6,700	2,942	2,190	4,624	1,007	7,714	6,724	1,080	Erie
382	171	146	300	65	263	196	71	Essex
383	243	223	374	133	387	293	109	Franklin
554	202	231	433	143	350	257	99	Fulton
390	121	220	318	95	203	116	35	Genesee
413	99	128	240	59	194	142	57	Greene
35	33	22	37	1	16	5	11	Hamilton
573	173	244	416	187	313	165	121	Herkimer
709	290	399	773	173	661	484	148	Jefferson
191	106	146	244	79	148	93	58	Lewis
352	127	158	297	64	234	207	29	Livingston
415	123	256	438	114	204	125	85	Madison
4,139	1,717	1,288	2,433	495	5,373	5,000	448	Monroe
464	243	215	486	134	301	166	113	Montgomery
6,965	2,310	1,250	2,608	541	2,128	1,772	409	Nassau
1,656	651	696	1,233	313	1,630	1,354	299	Niagara
2,125	724	849	1,460	470	1,622	1,149	490	Oneida
2,757	1,380	1,101	2,247	499	2,567	2,097	509	Onondaga
524	138	203	328	44	388	349	41	Ontario
1,565	881	820	1,440	1,448	1,484	1,066	447	Orange
321	158	185	308	85	220	169	55	Orleans
660	328	535	906	279	573	411	173	Oswego
379	155	238	444	151	171	96	79	Otsego
357	127	61	114	26	137	111	31	Putnam
1,305	453	429	686	192	720	592	133	Rensselaer
1,489	575	390	662	1,490	944	584	368	Rockland
871	319	545	895	283	858	647	224	St. Lawrence
888	516	436	718	314	354	192	173	Saratoga
1,317	424	367	796	170	805	629	190	Schenectady
186	90	152	207	83	134	85	52	Schoharie
144	69	77	169	71	124	84	44	Schuyler
212	87	114	192	35	72	54	20	Seneca
634	236	352	655	212	579	416	173	Steuben
5,925	3,006	1,570	2,659	665	2,999	2,602	460	Suffolk
522	227	287	563	197	324	252	86	Sullivan
297	104	155	302	89	206	148	62	Tioga
306	176	245	410	164	413	312	107	Tompkins
1,088	434	363	618	274	725	603	144	Ulster
439	213	279	399	117	167	103	67	Warren
407	164	182	386	70	232	187	49	Washington
466	154	214	294	52	295	274	25	Wayne
5,808	2,215	1,127	2,210	537	5,793	5,387	437	Westchester
275	75	142	267	59	112	70	45	Wyoming
164	73	120	176	73	175	123	57	Yates

Table 19 (Part 1)  
 MEDICAL ASSISTANCE  
 Medical Assistance Expenditures 1/ by Category of Eligibility by Social Services District

OCTOBER - DECEMBER 1991

Social Services District	Total M.A. Expenditures 2/	Federally Financially Participating					
		Medical and Subsistence					
		Total FFP	SSI Aged	SSI Blind & Disabled	ADC Adults	ADC Children	HR Children
New York State	\$3,474,717,926	\$3,071,310,760	\$340,275,206	\$659,074,288	\$185,631,862	\$253,839,882	\$32,841,815
New York City	2,357,887,088	2,029,396,647	273,667,626	455,137,514	128,030,695	180,412,113	25,485,921
Rest of State	1,116,830,838	1,041,914,113	66,607,580	203,936,774	57,601,167	73,427,769	7,355,894
Albany	30,018,019	27,917,614	1,699,907	5,993,576	1,360,420	1,989,334	203,090
Allegany	4,587,244	4,276,938	424,747	749,393	410,985	385,926	68,705
Broome	19,465,692	17,922,211	1,227,494	2,986,816	947,933	1,081,409	217,846
Cattaraugus	7,438,428	6,949,507	523,266	1,221,491	409,366	492,549	71,938
Cayuga	6,993,537	6,721,418	376,064	978,680	419,626	495,637	33,060
Chautauqua	14,782,254	13,752,053	816,712	2,500,448	934,250	1,162,526	130,808
Chemung	10,269,916	9,707,341	389,333	2,108,688	538,416	723,137	92,672
Chenango	4,046,195	3,816,128	239,709	606,673	213,490	264,336	26,228
Clinton	6,750,135	6,272,686	503,810	1,281,068	328,338	450,080	94,769
Columbia	6,581,880	6,285,320	345,107	922,575	210,838	258,257	24,430
Cortland	4,241,221	3,991,920	316,256	770,483	198,441	302,026	87,763
Delaware	5,291,277	5,054,798	310,646	889,504	241,076	609,891	80,617
Dutchess	22,511,238	20,765,199	1,848,419	4,344,607	1,123,583	1,115,893	157,088
Erie	115,419,476	105,235,320	6,385,388	25,364,485	8,000,992	9,021,006	648,256
Essex	3,794,767	3,510,879	165,706	639,171	164,164	198,425	31,416
Franklin	5,267,009	4,985,984	439,209	1,314,300	316,633	240,518	31,249
Fulton	7,000,936	6,710,446	279,314	1,279,801	258,146	301,519	61,531
Genesee	4,640,832	4,467,877	279,033	965,271	182,679	169,561	14,711
Greene	4,336,551	4,130,971	224,376	599,956	179,054	176,231	19,991
Hamilton	394,412	389,539	55,853	45,357	14,847	4,303	410
Herkimer	6,436,579	6,156,013	307,606	1,104,509	216,963	228,011	27,373
Jefferson	10,037,505	9,448,959	361,104	1,569,199	600,694	844,092	132,376
Lewis	2,626,806	2,482,469	105,723	446,131	133,503	88,141	15,518
Livingston	3,956,521	3,740,899	133,743	487,871	239,142	212,355	40,278
Madison	5,146,406	4,824,099	283,048	672,387	178,659	192,960	32,574
Monroe	81,024,748	73,985,806	5,040,493	14,756,229	7,037,717	8,764,721	614,196
Montgomery	6,874,531	6,618,140	292,626	1,177,642	231,186	378,303	77,771
Nassau	132,073,474	126,180,136	8,896,573	21,317,465	3,280,059	4,871,965	542,280
Niagara	21,766,330	19,864,208	1,202,391	3,896,423	1,478,194	1,522,965	123,739
Oneida	24,945,178	23,204,904	1,519,749	4,746,191	1,183,369	1,439,677	271,767
Onondaga	47,732,084	44,112,838	1,931,372	8,181,709	3,131,942	4,315,353	492,172
Ontario	7,224,733	6,720,009	493,875	1,029,468	391,530	386,348	63,919
Orange	30,136,193	27,697,577	1,750,786	5,296,221	1,687,222	2,527,892	194,113
Orleans	3,317,268	3,117,375	151,731	446,950	306,001	196,232	28,837
Oswego	9,785,280	9,265,476	481,978	1,612,338	569,653	671,159	151,813
Otsego	5,095,602	4,856,954	277,928	952,765	147,117	189,880	47,226
Putnam	5,479,856	5,146,052	211,101	1,341,598	105,055	78,084	26,459
Rensselaer	15,840,278	14,796,712	408,098	2,650,896	669,346	785,701	60,294
Rockland	30,158,545	28,699,561	2,670,819	6,027,885	711,367	686,627	161,657
St. Lawrence	10,601,180	9,955,029	965,926	2,043,320	680,913	712,014	122,250
Saratoga	11,448,037	11,067,663	517,848	1,873,341	286,741	439,003	145,169
Schenectady	18,137,761	17,214,637	658,248	3,147,661	963,505	1,181,852	146,282
Schoharie	2,794,437	2,630,832	181,603	475,392	142,297	94,509	23,623
Schuylar	2,110,548	2,033,665	143,239	272,833	96,933	165,729	17,298
Seneca	2,450,405	2,363,401	192,490	527,567	60,473	94,902	7,801
Steuben	8,450,030	7,969,193	350,819	1,797,490	469,474	663,383	106,659
Suffolk	136,983,664	131,031,455	8,273,127	24,649,190	7,207,114	10,382,746	596,821
Sullivan	10,016,472	9,493,509	694,595	2,385,346	505,197	672,024	76,318
Tioga	3,725,947	3,471,189	74,957	539,949	169,179	220,899	36,425
Tompkins	5,468,285	5,075,485	226,316	1,274,563	246,119	380,814	52,125
Ulster	16,968,814	15,934,230	992,051	3,605,138	776,126	776,432	78,077
Warren	4,980,631	4,779,617	183,512	893,456	202,767	143,606	15,871
Washington	4,997,274	4,799,986	236,100	1,146,489	201,961	227,484	29,985
Wayne	6,464,438	6,191,680	390,601	1,232,873	444,561	506,108	48,939
Westchester	133,143,498	119,757,482	8,997,868	24,159,838	6,191,564	8,720,072	559,478
Wyoming	2,747,442	2,653,874	97,502	412,032	105,327	91,448	19,432
Yates	1,853,039	1,708,850	59,685	224,076	98,920	131,714	72,401

1/ Expenditures exclude retroactive rate adjustments and non-MMIS payments to providers totaling \$168,982,708.  
 2/ Includes \$4,923,851 statewide not allocated to specific eligibility groups.

Table 19 (Part II)  
 MEDICAL ASSISTANCE  
 Medical Assistance Expenditures 1/ by Category of Eligibility by Social Services District

OCTOBER - DECEMBER 1991

Medical Only					Federally Non-Participating			Services District
Aged	Blind & Disabled	ADC-Related Adults	ADC-Related Children	HR-Related Children	Total FNP 2/	Medical and Subsistence HR Adults	Medical Only HR-Related Adults	
\$911,610,709	\$364,866,791	\$85,306,351	\$207,142,886	\$30,720,970	\$403,407,166	\$294,495,308	\$103,988,007	New York State
486,721,858	233,342,283	59,872,662	168,237,876	18,488,099	328,490,441	237,115,434	86,667,004	New York City
424,888,851	131,524,508	25,433,689	38,905,010	12,232,871	74,916,725	57,379,874	17,321,003	Rest of State
12,137,890	2,723,978	525,621	982,951	300,847	2,100,405	1,706,163	394,048	Albany
1,373,083	445,285	163,422	207,382	48,010	310,306	201,269	108,771	Allegany
8,515,502	1,552,289	473,768	670,458	248,696	1,543,481	1,130,915	412,562	Broome
3,018,659	473,387	258,763	360,147	119,941	488,921	309,785	179,136	Cattaraugus
2,870,133	805,669	271,486	377,641	93,422	272,119	193,348	74,493	Cayuga
5,889,746	1,237,209	384,527	437,757	258,070	1,030,201	709,127	319,784	Chautauqua
4,064,787	935,957	287,191	487,856	79,304	562,575	443,692	118,865	Chemung
1,649,121	312,023	205,889	245,851	52,808	230,067	106,040	85,602	Chenango
2,186,103	786,801	302,636	261,692	77,389	477,449	277,517	199,779	Clinton
3,161,196	1,075,603	114,785	117,703	54,826	296,560	204,816	91,744	Columbia
1,545,484	326,409	185,079	172,616	87,363	249,301	214,804	34,493	Cortland
2,092,928	395,185	212,635	168,800	53,516	236,479	198,563	37,916	Delaware
7,841,342	2,973,318	457,067	491,312	412,570	1,746,039	1,468,091	277,948	Dutchess
38,511,023	11,429,671	1,686,093	3,479,825	708,581	10,184,156	8,216,681	1,963,977	Erie
1,681,969	420,656	92,437	94,297	22,638	283,888	219,595	64,213	Essex
1,796,259	485,593	137,387	153,524	71,312	281,025	192,508	88,466	Franklin
3,225,004	788,474	175,907	239,094	101,656	290,490	231,276	59,188	Fulton
2,056,500	384,850	175,296	167,839	72,137	172,955	121,480	32,176	Genesee
2,243,151	427,367	116,972	120,085	23,788	205,580	142,872	62,612	Greene
115,345	119,266	14,789	19,254	115	4,873	2,671	2,203	Hamilton
3,189,916	427,713	240,210	257,432	156,280	280,566	133,535	90,251	Herkimer
3,859,825	1,156,462	385,097	479,704	60,406	588,546	393,247	166,481	Jefferson
921,280	501,417	86,591	146,676	37,489	144,337	73,435	70,892	Lewis
1,791,981	477,592	91,591	209,798	56,548	215,622	207,625	7,998	Livingston
2,482,872	402,598	202,170	223,156	153,675	322,307	114,836	207,470	Madison
25,999,863	7,996,548	1,035,968	2,236,778	503,293	7,038,942	5,966,263	1,066,980	Monroe
2,996,138	910,942	162,354	305,453	85,725	256,391	168,806	73,595	Montgomery
59,803,162	18,804,013	2,595,517	4,984,813	1,084,289	5,893,338	3,844,866	2,027,197	Nassau
8,151,377	1,841,822	584,360	851,398	211,539	1,902,122	1,475,274	426,026	Niagara
10,410,061	1,803,335	680,387	856,122	294,246	1,740,274	943,853	793,312	Oneida
17,135,955	5,782,489	1,031,737	1,654,825	455,284	3,619,246	2,846,103	769,391	Onondaga
3,480,639	228,508	159,578	467,411	18,733	504,724	462,526	40,535	Ontario
9,284,906	3,886,575	1,162,862	1,041,479	865,521	2,438,616	1,507,422	930,973	Orange
1,247,968	408,002	99,110	136,802	95,742	199,893	132,377	67,104	Orleans
3,353,638	1,010,649	548,680	576,247	289,321	519,804	303,999	215,580	Oswego
2,253,444	455,987	220,309	229,248	83,050	238,648	83,680	154,967	Otsego
2,430,433	671,320	85,011	191,106	5,885	333,804	212,351	121,349	Putnam
7,357,907	1,958,801	417,957	375,651	112,061	1,043,566	853,385	190,154	Rensselaer
12,300,514	4,043,074	635,875	686,252	775,491	1,458,984	994,926	464,059	Rockland
3,488,775	724,033	488,983	491,711	237,104	646,151	495,640	150,475	St. Lawrence
4,827,830	1,841,052	382,904	474,103	279,672	380,374	189,548	190,751	Saratoga
7,511,240	2,200,567	332,193	902,264	170,825	923,124	719,139	202,601	Schenectady
854,952	481,510	108,137	214,357	54,452	163,605	108,113	55,492	Schoharie
770,880	330,881	70,165	105,795	59,912	76,883	47,554	29,329	Schuyler
1,091,300	204,836	61,790	105,246	16,996	87,004	66,674	20,330	Seneca
3,169,828	545,806	270,652	335,438	259,644	480,837	297,172	183,665	Steuben
48,683,972	22,497,538	2,975,768	4,609,494	1,155,685	5,952,209	4,345,482	1,606,118	Suffolk
3,186,125	919,965	299,373	510,525	244,041	522,963	337,011	185,887	Sullivan
1,809,843	336,082	116,125	133,007	34,723	254,758	129,988	124,674	Tioga
1,685,466	540,622	247,404	323,578	98,478	392,800	309,498	82,523	Tompkins
6,736,619	1,830,494	368,013	476,149	295,131	1,034,584	791,991	242,593	Ulster
1,963,471	904,064	181,467	196,862	94,541	201,014	117,225	83,789	Warren
1,956,662	558,813	155,600	209,996	76,896	197,288	134,660	62,628	Washington
2,773,680	405,334	175,633	178,568	35,383	272,758	254,036	18,538	Wayne
47,826,059	15,885,894	2,368,511	4,258,406	789,792	13,386,016	11,839,282	1,538,799	Westchester
1,414,842	223,022	94,395	137,844	58,030	93,568	75,868	17,700	Wyoming
710,203	227,158	69,462	75,232	39,999	144,189	111,271	32,821	Yates

Note: Detail may not add to total due to rounding.

Table 20 (Part 1)  
**MEDICAL ASSISTANCE**  
 Medical Assistance Expenditures 1/ by Category of Service by Category of Eligibility  
 for New York State, New York City and Rest of State

OCTOBER - DECEMBER 1991

Category of Eligibility	Total Medical Expenditures	Hospital Inpatient	Hospital Outpatient	Free Standing Clinic	Skilled Nursing Facilities	Intermediate Care Facilities	Personal Care	Home Health Services
<b>New York State Total 2/</b>	<b>\$3,474,717,926</b>	<b>\$1,323,557,909</b>	<b>\$199,190,235</b>	<b>\$118,160,643</b>	<b>\$836,805,965</b>	<b>\$62,168,227</b>	<b>\$379,193,660</b>	<b>\$103,573,894</b>
<b>Total FFP</b>	<b>3,071,310,760</b>	<b>1,044,146,940</b>	<b>156,373,055</b>	<b>97,871,330</b>	<b>834,334,115</b>	<b>61,903,415</b>	<b>377,000,378</b>	<b>99,115,031</b>
Medical and Subsistence								
SSI Aged	340,275,206	65,831,602	3,194,636	2,731,830	57,396,434	234,346	142,952,834	25,826,778
SSI Blind and Disabled	659,074,288	282,268,156	51,133,892	37,636,072	45,581,678	35,037,585	67,866,215	27,202,296
ADC Adults	185,631,862	88,212,675	26,901,214	14,193,977	91,963	0	443,104	1,342,601
ADC Children	253,839,882	141,408,290	33,959,147	17,373,150	531,451	19,598	96,644	1,368,894
HR Children	32,841,815	19,781,662	3,850,123	2,138,402	40,522	0	106,235	326,245
<b>MA Only</b>								
Aged	911,610,709	65,649,658	1,809,286	1,625,004	643,362,480	1,828,836	138,411,261	30,508,033
Blind & Disabled	364,866,791	166,253,478	7,768,600	6,547,170	86,228,395	24,120,637	26,749,518	11,376,438
ADC-Related Adult	85,306,351	52,579,639	10,815,318	5,845,076	720,003	70,420	203,470	320,554
ADC-Related Children	207,142,886	142,321,318	14,276,595	8,024,355	277,695	544,622	153,375	733,676
HR-Related Children	30,720,970	19,840,462	2,664,244	1,756,294	103,494	47,371	17,722	109,516
<b>Total FNP 2/</b>	<b>403,407,166</b>	<b>279,410,969</b>	<b>42,817,180</b>	<b>20,289,313</b>	<b>2,471,850</b>	<b>264,812</b>	<b>2,193,282</b>	<b>4,458,863</b>
Medical and Subsistence								
HR Adults	294,495,308	186,847,902	38,107,877	18,704,722	456,597	0	1,678,793	4,049,404
<b>MA Only</b>	<b>103,988,007</b>	<b>90,220,589</b>	<b>4,568,628</b>	<b>1,516,147</b>	<b>488,872</b>	<b>43,295</b>	<b>233,003</b>	<b>327,960</b>
<b>HR-Related Adults</b>								
<b>New York City Total 2/</b>	<b>2,357,887,088</b>	<b>1,044,042,118</b>	<b>135,243,690</b>	<b>70,465,256</b>	<b>425,484,596</b>	<b>30,234,342</b>	<b>290,180,906</b>	<b>75,673,765</b>
<b>Total FFP</b>	<b>2,029,396,647</b>	<b>810,037,081</b>	<b>103,370,274</b>	<b>55,843,482</b>	<b>423,472,049</b>	<b>29,993,106</b>	<b>288,215,101</b>	<b>71,666,221</b>
Medical and Subsistence								
SSI Aged	273,667,626	56,062,839	2,353,913	1,541,554	40,012,254	138,330	122,518,156	20,144,006
SSI Blind and Disabled	455,137,514	220,013,715	32,769,671	19,685,136	31,140,059	17,061,999	51,952,336	19,885,431
ADC Adults	128,030,695	63,092,499	17,866,419	9,247,671	91,963	0	272,491	920,551
ADC Children	180,412,113	106,568,227	22,320,636	10,511,209	473,033	19,598	82,395	735,747
HR Children	25,485,921	16,090,411	2,669,117	1,526,667	41,758	0	95,704	264,139
<b>MA Only</b>								
Aged	486,721,858	44,082,948	1,245,889	1,057,472	306,931,579	987,529	96,323,343	21,582,446
Blind & Disabled	233,342,283	131,611,173	4,574,636	2,794,540	44,522,433	11,271,307	16,800,709	7,398,288
ADC-Related Adult	59,872,662	39,366,724	7,902,657	3,665,737	0	0	45,300	196,450
ADC-Related Children	168,237,876	120,551,804	10,072,408	4,757,671	190,180	514,343	114,139	509,953
HR-Related Children	18,488,099	12,596,741	1,594,928	1,055,825	68,790	0	10,528	29,205
<b>Total FNP 2/</b>	<b>328,490,441</b>	<b>234,005,037</b>	<b>31,873,416</b>	<b>14,621,774</b>	<b>2,012,547</b>	<b>241,236</b>	<b>1,965,805</b>	<b>4,007,544</b>
Medical and Subsistence								
HR Adults	237,115,434	154,609,722	28,418,711	13,512,077	409,854	0	1,495,888	3,702,068
<b>MA Only</b>	<b>86,667,004</b>	<b>77,089,393</b>	<b>3,321,436</b>	<b>1,056,946</b>	<b>139,776</b>	<b>19,719</b>	<b>188,730</b>	<b>252,348</b>
<b>HR-Related Adults</b>								
<b>Rest of State Total 2/</b>	<b>1,116,830,838</b>	<b>279,515,791</b>	<b>63,946,545</b>	<b>47,695,387</b>	<b>411,321,369</b>	<b>31,933,885</b>	<b>89,012,754</b>	<b>27,900,129</b>
<b>Total FFP</b>	<b>1,041,914,113</b>	<b>234,109,859</b>	<b>53,002,781</b>	<b>42,027,848</b>	<b>410,862,066</b>	<b>31,910,309</b>	<b>88,785,277</b>	<b>27,448,810</b>
Medical and Subsistence								
SSI Aged	66,607,580	9,768,763	840,723	1,190,276	17,384,180	96,016	20,434,678	5,682,772
SSI Blind and Disabled	203,936,774	62,254,441	18,364,221	17,950,936	14,441,619	17,975,586	15,913,879	7,316,860
ADC Adults	57,601,167	25,120,176	9,034,795	4,946,306	0	0	170,613	422,050
ADC Children	73,427,769	34,840,063	11,638,511	6,861,941	58,418	0	14,249	633,147
HR Children	7,355,894	3,691,251	1,181,006	611,735	(1,236)	0	10,531	62,106
<b>MA Only</b>								
Aged	424,888,851	21,566,710	563,397	567,532	336,430,901	841,307	42,087,918	8,925,587
Blind & Disabled	131,524,508	34,642,305	3,193,964	3,752,630	41,705,962	12,849,330	9,948,809	3,978,150
ADC-Related Adult	25,433,689	13,212,915	2,912,661	2,179,339	720,003	70,420	158,170	124,104
ADC-Related Children	38,905,010	21,769,514	4,204,187	3,266,684	87,515	30,279	39,236	223,723
HR-Related Children	12,232,871	7,243,721	1,069,316	700,469	34,704	47,371	7,194	80,311
<b>Total FNP 2/</b>	<b>74,916,725</b>	<b>45,405,932</b>	<b>10,943,764</b>	<b>5,667,539</b>	<b>459,303</b>	<b>23,576</b>	<b>227,477</b>	<b>451,319</b>
Medical and Subsistence								
HR Adults	57,379,874	32,238,180	9,689,166	5,192,645	46,743	0	182,905	347,334
<b>MA Only</b>	<b>17,321,003</b>	<b>13,131,196</b>	<b>1,247,192</b>	<b>459,201</b>	<b>349,096</b>	<b>23,576</b>	<b>44,273</b>	<b>75,612</b>
<b>HR-Related Adults</b>								

1/ Expenditures exclude retroactive rate adjustments and non-MMIS payments to providers totaling \$168,982,708.

2/ Includes \$4,923,851 statewide not allocated to specific eligibility groups.

Table 20 (Part II)  
**MEDICAL ASSISTANCE**  
 Medical Assistance Expenditures 1/ by Category of Service by Category of Eligibility  
 for New York State, New York City and Rest of State

OCTOBER - DECEMBER 1991

Drugs and Sickroom Supplies	Physicians	Dental	Transportation	Lab. and X-Ray	Family Planning	All Other	Category of Eligibility
\$188,241,171	\$67,258,538	\$27,644,679	\$38,151,619	\$11,208,931	\$14,881,397	\$104,681,058	New York State Total 2/
163,902,803	58,474,524	22,197,421	36,169,838	8,454,299	13,328,842	98,038,769	Total FFP Medical and Subsistence
29,879,013	842,172	1,113,924	6,022,115	240,676	5,240	4,003,606	SSI Aged
62,369,291	7,184,730	2,999,173	16,711,620	2,267,103	567,109	20,309,368	SSI Blind and Disabled
16,529,243	12,240,591	4,600,812	1,042,951	2,166,097	6,857,231	11,009,403	ADC Adults
13,671,246	18,569,888	7,801,698	821,717	1,545,594	1,530,866	15,141,699	ADC Children
1,548,172	1,980,094	1,035,829	95,616	232,330	404,572	1,302,013	HR Children
16,131,807	490,710	414,249	5,266,991	169,263	12,332	5,930,799	MA Only
15,555,606	1,610,253	487,748	5,634,332	605,738	87,097	11,841,781	Aged
2,825,424	6,419,266	999,514	137,839	534,381	3,012,175	823,272	Blind & Disabled
3,879,873	7,021,266	1,901,902	384,529	528,187	724,156	26,371,337	ADC-Related Adult
1,513,128	2,115,554	902,572	52,128	164,930	128,064	1,305,491	ADC-Related Children
24,338,368	8,784,014	5,447,258	1,981,781	2,754,632	1,552,555	6,642,289	Total FNP 2/ Medical and Subsistence
21,596,953	7,280,728	4,506,053	1,751,852	2,304,238	1,210,802	5,999,387	HR Adults
2,604,404	1,465,715	931,550	190,169	440,145	337,965	619,565	MA Only HR-Related Adults
121,754,496	44,916,816	20,299,022	22,587,251	7,371,701	9,131,635	61,161,494	New York City Total 2/
102,242,898	37,867,144	15,798,379	21,308,995	5,311,011	8,061,323	56,209,583	Total FFP Medical and Subsistence
21,490,842	726,420	944,874	5,096,389	203,635	4,886	2,429,528	SSI Aged
36,679,255	4,643,123	1,965,359	9,551,863	1,395,692	297,810	8,096,060	SSI Blind and Disabled
11,950,054	8,477,831	3,439,150	382,170	1,409,282	4,250,862	6,629,752	ADC Adults
9,992,037	12,276,936	5,670,967	163,229	1,063,740	824,781	9,709,578	ADC Children
1,186,248	1,397,438	855,148	27,757	163,330	243,495	924,709	HR Children
8,845,159	341,264	289,795	3,153,297	119,743	9,246	1,752,148	MA Only
7,355,643	821,281	255,597	2,756,376	313,471	61,293	2,805,536	Aged
1,383,135	4,064,992	659,910	37,160	232,418	1,923,133	395,046	Blind & Disabled
2,367,035	4,004,031	1,085,355	128,683	309,906	382,618	23,249,750	ADC-Related Adult
993,490	1,113,828	632,224	12,071	99,794	63,199	217,476	ADC-Related Children
18,911,598	7,049,672	4,440,643	1,278,256	2,060,690	1,070,312	4,951,911	Total FNP 2/ Medical and Subsistence
17,101,915	5,975,966	3,701,285	1,130,526	1,746,355	855,566	4,455,501	HR Adults
1,722,176	1,043,288	730,502	110,045	304,992	211,811	475,842	MA Only HR-Related Adults
67,086,675	22,341,722	7,405,657	15,564,368	3,837,230	5,749,762	43,519,564	Rest of State Total 2/
61,659,905	20,607,380	6,399,042	14,860,843	3,143,288	5,267,519	41,829,186	Total FFP Medical and Subsistence
8,388,171	115,752	169,050	925,726	37,041	354	1,574,078	SSI Aged
25,690,036	2,541,607	973,814	7,159,757	871,411	269,299	12,213,308	SSI Blind and Disabled
4,579,189	3,762,760	1,161,662	660,781	756,815	2,606,369	4,379,651	ADC Adults
3,679,209	6,292,952	2,130,731	658,488	481,854	706,085	5,432,121	ADC Children
361,924	582,656	180,681	67,859	69,000	161,077	377,304	HR Children
7,286,648	149,446	124,454	2,113,694	49,520	3,086	4,178,651	MA Only
8,199,963	786,972	232,151	2,877,956	292,267	25,804	9,036,245	Aged
1,442,289	2,354,274	339,604	100,679	301,963	1,089,042	428,226	Blind & Disabled
1,512,838	3,017,235	816,547	255,846	218,281	341,538	3,121,587	ADC-Related Adult
519,638	1,001,726	270,348	40,057	65,136	64,865	1,088,015	ADC-Related Children
5,426,770	1,734,342	1,006,615	703,525	693,942	482,243	1,690,378	Total FNP 2/ Medical and Subsistence
4,495,038	1,304,762	804,768	621,326	557,883	355,236	1,543,886	HR Adults
882,228	422,427	201,048	80,124	135,153	126,154	143,723	MA Only HR-Related Adults

Table 21  
Child Support Collections (IV-D)  
October - December 1991

Social Services District	Collections from Absent Parents		
	Total	AFDC	Non-AFDC
New York State	\$110,968,316	\$36,803,052	\$74,165,264
New York City	36,492,623	17,813,411	18,679,212
Rest of State	74,475,693	18,989,641	55,486,052
Albany	1,985,020	399,414	1,585,606
Allegany	533,102	177,686	355,416
Broome	1,815,471	337,256	1,478,215
Cattaraugus	732,825	159,752	573,073
Cayuga	708,171	135,246	572,925
Chautauqua	911,590	307,158	604,432
Chemung	999,773	204,508	795,265
Chenango	556,157	104,740	451,417
Clinton	598,700	121,759	476,941
Columbia	414,502	105,062	309,440
Cortland	568,257	93,871	474,386
Delaware	422,663	68,312	354,351
Dutchess	1,710,973	292,699	1,418,274
Erie	5,498,510	2,520,394	2,978,116
Essex	318,891	94,353	224,538
Franklin	529,101	80,839	448,262
Fulton	695,813	165,224	530,589
Genesee	521,106	125,656	395,450
Greene	393,017	44,373	348,644
Hamilton	36,751	3,844	32,907
Herkimer	710,957	120,724	590,233
Jefferson	1,147,019	170,826	976,193
Lewis	298,365	38,401	259,964
Livingston	563,874	119,440	444,434
Madison	564,796	122,613	442,183
Monroe	4,160,866	1,822,031	2,338,835
Montgomery	570,074	123,250	446,824
Nassau	6,149,092	1,092,845	5,056,247
Niagara	2,048,194	636,304	1,411,890
Oneida	1,691,713	489,262	1,202,451
Onondaga	3,650,976	950,835	2,700,141
Ontario	679,006	179,164	499,842
Orange	2,379,288	473,584	1,905,704
Orleans	434,649	101,621	333,028
Oswego	1,138,068	253,997	884,071
Otsego	429,948	75,358	354,590
Putnam	472,937	36,179	436,758
Rensselaer	1,617,112	295,137	1,321,975
Rockland	1,558,354	339,120	1,219,234
St. Lawrence	920,220	200,193	720,027
Saratoga	1,347,195	110,482	1,236,713
Schenectady	1,325,648	250,175	1,075,473
Schoharie	306,758	72,944	233,814
Schuyler	218,726	35,869	182,857
Seneca	278,722	38,956	239,766
Steuben	922,041	163,271	758,770
Suffolk	9,377,621	2,747,859	6,629,762
Sullivan	499,477	108,098	391,379
Tioga	511,268	89,307	421,961
Tompkins	660,593	146,552	514,041
Ulster	1,237,565	317,399	920,166
Warren	812,779	112,953	699,826
Washington	724,192	147,308	576,884
Wayne	873,484	151,448	722,036
Westchester	3,665,982	1,214,445	2,451,537
Wyoming	397,191	51,758	345,433
Yates	180,550	47,787	132,763



Table A  
Comparison of monthly average cases and persons and annual expenditures for 1988 and 1989  
1991 SUMMARY

Program	1991	1990	Actual Change	Percent Change
<b>NEW YORK STATE</b>				
Aid to Families with Dependent Children				
Cases	379,730	350,164	29,566	8.44%
Persons	1,073,445	995,580	77,865	7.82%
Expenditures	\$2,431,270,372	\$2,223,519,150	\$207,751,222	9.34%
Home Relief				
Cases	275,845	230,057	45,788	19.90%
Persons	345,995	291,425	54,570	18.73%
Expenditures	\$1,126,733,578	\$913,344,022	\$213,389,556	23.36%
Supplemental Security Income				
Persons	416,972	387,732	29,240	7.54%
Expenditures	\$1,720,294,996	\$1,525,075,707	195,219,289	12.80%
Food Stamps				
Cases	795,986	711,402	84,584	11.89%
Persons	1,766,753	1,585,909	180,844	11.40%
Expenditures	\$1,364,224,660	\$1,128,738,078	\$235,486,582	20.86%
Medical Assistance				
Persons	1,442,635	1,323,442	119,193	9.01%
Expenditures	\$13,557,859,833	\$11,617,522,981	\$1,940,336,852	16.70%
<b>NEW YORK CITY</b>				
Aid to Families with Dependent Children				
Cases	248,410	231,879	16,531	7.13%
Persons	692,534	654,141	38,393	5.87%
Expenditures	1,516,234,289	1,407,671,422	\$108,562,867	7.71%
Home Relief				
Cases	195,677	160,742	34,935	21.73%
Persons	246,854	204,436	42,418	20.75%
Expenditures	755,849,730	590,177,894	\$165,671,836	28.07%
Supplemental Security Income				
Persons	259,925	242,333	17,592	7.26%
Expenditures	1,109,986,843	985,439,067	\$124,547,776	12.64%
Food Stamps				
Cases	509,819	457,001	52,818	11.56%
Persons	1,114,076	1,016,729	97,347	9.57%
Expenditures	880,932,511	739,677,695	\$141,254,816	19.10%
Medical Assistance				
Persons	914,165	848,181	65,984	7.78%
Expenditures	9,127,096,965	7,899,605,877	\$1,227,491,088	15.54%
<b>REST OF STATE</b>				
Aid to Families with Dependent Children				
Cases	131,320	118,285	13,035	11.02%
Persons	380,911	341,439	39,472	11.56%
Expenditures	915,036,083	815,847,728	\$99,188,355	12.16%
Home Relief				
Cases	80,168	69,315	10,853	15.66%
Persons	99,141	86,989	12,152	13.97%
Expenditures	370,883,848	323,166,128	\$47,717,720	14.77%
Supplemental Security Income				
Persons	157,047	145,399	11,648	8.01%
Expenditures	610,308,153	539,636,640	\$70,671,513	13.10%
Food Stamps				
Cases	286,167	254,401	31,766	12.49%
Persons	652,677	569,180	83,497	14.67%
Expenditures	483,292,149	389,060,383	\$94,231,766	24.22%
Medical Assistance				
Persons	528,470	475,261	53,209	11.20%
Expenditures	4,430,762,868	3,717,917,104	\$712,845,764	19.17%

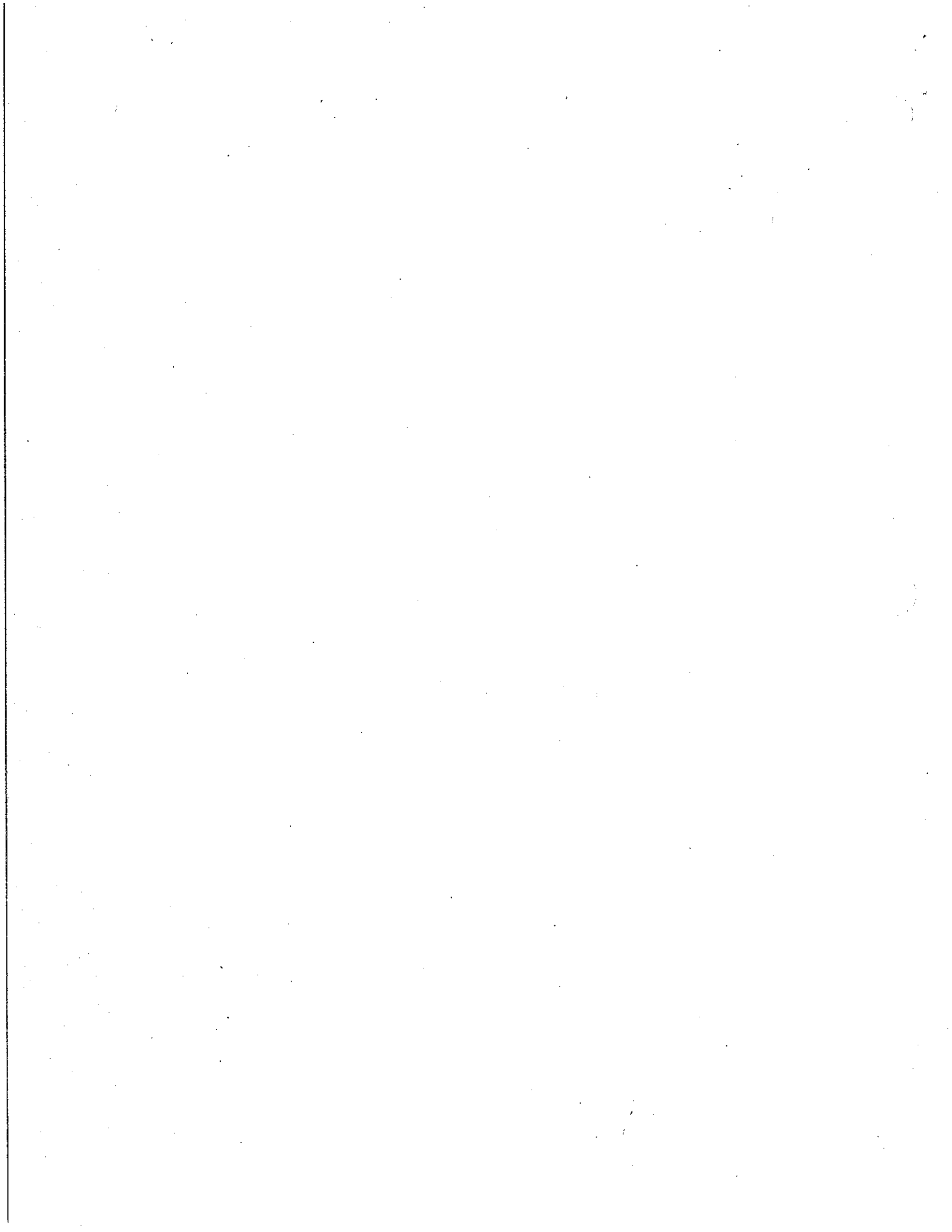


Table A.1  
Calendar Year Monthly Average Recipient Change For Major Social Services Programs By Social Services District

1991 versus 1990  
January - December

Social Services District	Total IM Recipients			Total ADC Recipients			Total HR Recipients		
	Current Year	Previous Year	Percent Change	Current Year	Previous Year	Percent Change	Current Year	Previous Year	Percent Change
New York State	1,419,440	1,287,005	10.29	1,073,445	995,580	7.82	345,995	291,425	18.72
New York City	939,388	858,577	9.41	692,534	654,141	5.87	246,854	204,436	20.75
Rest of State	480,052	428,428	12.05	380,911	341,439	11.56	99,141	86,989	13.97
Albany	12,558	10,279	22.17	10,041	8,432	19.08	2,517	1,847	36.28
Allegany	4,207	3,965	6.10	3,263	3,035	7.51	944	930	1.51
Broome	10,599	8,717	21.59	8,061	6,863	17.46	2,538	1,854	36.89
Cattaraugus	4,757	4,470	6.42	3,760	3,473	8.26	997	997	0.00
Cayuga	3,924	3,781	3.78	3,333	3,103	7.41	591	678	-12.83
Chautauqua	10,854	10,164	6.79	8,423	7,864	7.11	2,431	2,300	5.70
Chemung	6,041	5,495	9.94	4,785	4,425	8.14	1,256	1,070	17.38
Chenango	2,271	1,914	18.65	1,858	1,545	20.26	413	369	11.92
Clinton	3,782	3,324	13.78	2,862	2,548	12.32	920	776	18.56
Columbia	2,557	2,086	22.58	2,048	1,645	24.50	509	441	15.42
Cortland	2,567	2,235	14.85	1,876	1,681	11.60	691	554	24.73
Delaware	2,101	1,786	17.64	1,562	1,356	15.19	539	430	25.35
Dutchess	7,658	6,128	24.97	6,171	4,971	24.14	1,487	1,157	28.52
Erie	71,749	67,619	6.11	56,647	53,707	5.47	15,102	13,912	8.56
Essex	2,096	1,789	17.16	1,637	1,392	17.60	459	397	15.62
Franklin	2,941	2,729	7.77	2,141	1,938	10.47	800	791	1.14
Fulton	2,830	2,367	19.56	2,189	1,903	15.03	641	464	38.15
Genesee	1,735	1,478	17.39	1,462	1,246	17.34	273	232	17.67
Greene	1,697	1,459	16.31	1,308	1,163	12.47	389	296	31.42
Hamilton	99	86	15.12	81	64	26.56	18	22	-18.18
Herkimer	2,337	1,871	24.91	1,996	1,562	27.78	341	309	10.36
Jefferson	6,092	4,934	23.47	4,778	3,982	19.99	1,314	952	38.03
Lewis	1,210	1,143	5.86	928	875	6.06	282	268	5.22
Livingston	2,554	2,231	14.48	1,970	1,740	13.22	584	491	18.94
Madison	1,867	1,499	24.55	1,542	1,243	24.05	325	256	26.95
Monroe	57,338	53,572	7.03	46,783	43,785	6.85	10,555	9,787	7.85
Montgomery	2,325	1,933	20.28	1,886	1,625	16.06	439	308	42.53
Nassau	19,487	16,098	21.05	15,704	13,143	19.49	3,783	2,955	28.02
Niagara	12,932	12,333	4.86	10,004	9,468	5.66	2,928	2,865	2.20
Oneida	13,715	12,975	5.70	10,978	10,434	5.21	2,737	2,541	7.71
Onondaga	27,405	24,195	13.27	22,037	19,829	11.14	5,368	4,366	22.95
Ontario	3,753	3,072	22.17	2,963	2,443	21.29	790	629	25.60
Orange	13,178	11,012	19.67	9,913	8,249	20.17	3,265	2,763	18.17
Orleans	2,199	2,116	3.92	1,764	1,708	3.28	435	408	6.62
Oswego	6,324	5,430	16.46	5,152	4,425	16.43	1,172	1,005	16.62
Otsego	1,555	1,314	18.34	1,277	1,049	21.73	278	265	4.91
Putnam	783	605	29.42	563	476	18.28	220	129	70.54
Rensselaer	6,809	5,710	19.25	5,628	4,740	18.73	1,181	970	21.75
Rockland	6,876	6,277	9.54	4,664	4,194	11.21	2,212	2,083	6.19
St. Lawrence	7,686	7,113	8.06	5,744	5,215	10.14	1,942	1,898	2.32
Saratoga	2,737	2,245	21.92	2,279	1,854	22.92	458	391	17.14
Schenectady	6,561	5,129	27.92	5,241	4,186	25.20	1,320	943	39.98
Schoharie	1,090	968	12.60	846	754	12.20	244	214	14.02
Schuyler	843	671	25.63	674	509	32.42	169	162	4.32
Seneca	864	775	11.48	713	650	9.69	151	125	20.80
Steuben	5,508	4,893	12.57	4,306	3,848	11.90	1,202	1,045	15.02
Suffolk	44,283	38,288	15.66	36,679	31,649	15.89	7,604	6,639	14.54
Sullivan	3,306	2,743	20.52	2,666	2,153	23.83	640	590	8.47
Tioga	2,148	1,830	17.38	1,708	1,400	22.00	440	430	2.33
Tompkins	3,132	2,603	20.32	2,330	2,013	15.75	802	590	35.93
Ulster	7,006	6,306	11.10	5,777	5,077	13.79	1,229	1,229	0.00
Warren	1,435	1,196	19.98	1,215	1,018	19.35	220	178	23.60
Washington	2,183	1,773	23.12	1,764	1,433	23.10	419	340	23.24
Wayne	3,880	3,360	15.48	3,172	2,758	15.01	708	602	17.61
Westchester	39,515	36,594	7.98	30,109	28,223	6.68	9,406	8,371	12.36
Wyoming	1,013	918	10.35	833	736	13.18	180	182	-1.10
Yates	1,100	832	32.21	817	639	27.86	283	193	46.63

Table A.2  
Calendar Year Monthly Average Recipient Change for Major Social Services Programs by Social Services District

1991 versus 1990  
January - December

Social Services District	Total ADC Recipients			ADC-Basic			ADC-Unemployed		
	Current Year	Previous Year	Percent Change	Current Year	Previous Year	Percent Change	Current Year	Previous Year	Percent Change
New York State	1,073,445	995,580	7.82	1,017,187	953,232	6.71	56,258	42,348	32.84
New York City	692,534	654,141	5.87	677,522	641,384	5.63	15,012	12,757	17.68
Rest of State	380,911	341,439	11.56	339,665	311,848	8.92	41,246	29,591	39.39
Albany	10,041	8,432	19.08	9,463	8,115	16.61	578	317	82.33
Allegany	3,264	3,036	7.51	2,416	2,257	7.04	848	779	8.86
Broome	8,062	6,863	17.46	6,535	5,972	9.43	1,527	891	71.38
Cattaraugus	3,760	3,473	8.26	2,889	2,777	4.03	871	696	25.14
Cayuga	3,333	3,104	7.41	2,702	2,581	4.69	631	523	20.65
Chautauqua	8,423	7,864	7.11	7,085	6,692	5.87	1,338	1,172	14.16
Chemung	4,785	4,425	8.14	3,930	3,795	3.56	855	630	35.71
Chenango	1,858	1,545	20.26	1,487	1,258	18.20	371	287	29.27
Clinton	2,862	2,548	12.32	2,398	2,211	8.46	464	337	37.69
Columbia	2,048	1,645	24.50	1,697	1,466	15.76	351	179	96.09
Cortland	1,876	1,681	11.60	1,487	1,421	4.64	389	260	49.62
Delaware	1,562	1,356	15.19	1,250	1,183	5.66	312	173	80.35
Dutchess	6,171	4,971	24.14	5,475	4,630	18.25	696	341	104.11
Erie	56,644	53,704	5.47	51,151	49,302	3.75	5,493	4,402	24.73
Essex	1,637	1,392	17.60	1,209	1,046	15.58	428	346	23.70
Franklin	2,141	1,938	10.47	1,549	1,440	7.57	592	498	18.88
Fulton	2,190	1,903	15.03	1,823	1,609	13.30	367	294	24.83
Genesee	1,462	1,245	17.34	1,266	1,131	11.94	196	114	71.93
Greene	1,308	1,163	12.47	1,207	1,118	7.96	101	45	124.44
Hamilton	80	64	26.56	58	52	11.54	22	12	83.33
Herkimer	1,996	1,562	27.78	1,502	1,288	16.61	494	274	80.29
Jefferson	4,778	3,982	19.99	3,780	3,225	17.21	998	757	31.84
Lewis	928	875	6.06	640	607	5.44	288	268	7.46
Livingston	1,969	1,741	13.22	1,546	1,397	10.67	423	344	22.97
Madison	1,542	1,243	24.05	1,330	1,155	15.15	212	88	140.91
Monroe	46,783	43,785	6.85	44,461	41,728	6.55	2,322	2,057	12.88
Montgomery	1,886	1,625	16.06	1,656	1,513	9.45	230	112	105.36
Nassau	15,703	13,143	19.49	15,255	12,961	17.70	448	182	146.15
Niagara	10,005	9,469	5.66	8,950	8,551	4.67	1,055	918	14.92
Oneida	10,978	10,434	5.21	9,304	9,126	1.95	1,674	1,308	27.98
Onondaga	22,037	19,830	11.14	20,154	18,432	9.34	1,883	1,398	34.69
Ontario	2,962	2,443	21.29	2,477	2,117	17.01	485	326	48.77
Orange	9,914	8,250	20.17	9,281	7,939	16.90	633	311	103.54
Orleans	1,764	1,708	3.28	1,444	1,404	2.85	320	304	5.26
Oswego	5,152	4,425	16.43	3,949	3,596	9.82	1,203	829	45.11
Otsego	1,277	1,049	21.73	1,039	960	8.23	238	89	167.42
Putnam	563	475	18.28	505	450	12.22	58	25	132.00
Rensselaer	5,628	4,741	18.73	4,724	4,205	12.34	904	536	68.66
Rockland	4,664	4,194	11.21	4,266	3,887	9.75	398	307	29.64
St. Lawrence	5,744	5,215	10.14	3,962	3,744	5.82	1,782	1,471	21.14
Saratoga	2,280	1,854	22.92	2,047	1,712	19.57	233	142	64.08
Schenectady	5,241	4,186	25.20	4,690	3,876	21.00	551	310	77.74
Schoharie	845	753	12.20	692	646	7.12	153	107	42.99
Schuyler	674	509	32.42	513	422	21.56	161	87	85.06
Seneca	713	650	9.69	633	583	8.58	80	67	19.40
Steuben	4,306	3,848	11.90	3,349	3,080	8.73	957	768	24.61
Suffolk	36,679	31,649	15.89	34,318	30,399	12.89	2,361	1,250	88.88
Sullivan	2,666	2,153	23.83	2,389	2,030	17.68	277	123	125.20
Tioga	1,708	1,400	22.00	1,355	1,205	12.45	353	195	81.03
Tompkins	2,330	2,013	15.75	1,864	1,718	8.50	466	295	57.97
Ulster	5,777	5,077	13.79	5,075	4,612	10.04	702	465	50.97
Warren	1,215	1,018	19.35	1,052	952	10.50	163	66	146.97
Washington	1,765	1,432	23.10	1,491	1,277	16.76	274	155	76.77
Wayne	3,173	2,758	15.01	2,592	2,352	10.20	581	406	43.10
Westchester	30,109	28,223	6.68	28,937	27,476	5.32	1,172	747	56.89
Wyoming	833	735	13.18	695	652	6.60	138	83	66.27
Yates	817	640	27.86	671	515	30.29	146	125	16.80

Table A.3  
Calendar Year Monthly Average Recipient Change For Major Social Services Programs By Social Services District

1991 versus 1990  
January - December

Social Services District	Total HR Recipients			HR-Family			HR-One Person		
	Current Year	Previous Year	Percent Change	Current Year	Previous Year	Percent Change	Current Year	Previous Year	Percent Change
New York State	345,995	291,425	18.72	132,411	113,797	16.36	213,584	177,628	20.24
New York City	246,854	204,436	20.75	97,179	82,359	17.99	149,675	122,077	22.61
Rest of State	99,141	86,989	13.97	35,232	31,438	12.07	63,909	55,551	15.05
Albany	2,518	1,847	36.28	830	650	27.69	1,688	1,197	41.02
Allegany	944	929	1.51	439	443	-0.90	505	486	3.91
Broome	2,538	1,853	36.89	1,124	823	36.57	1,414	1,030	37.28
Cattaraugus	997	998	0.00	461	498	-7.43	536	500	7.20
Cayuga	591	679	-12.83	167	229	-27.07	424	450	-5.78
Chautauqua	2,431	2,300	5.70	1,197	1,129	6.02	1,234	1,171	5.38
Chemung	1,257	1,069	17.38	572	529	8.13	685	540	26.85
Chenango	413	368	11.92	233	219	6.39	180	149	20.81
Clinton	920	776	18.56	401	358	12.01	519	418	24.16
Columbia	509	441	15.42	229	207	10.63	280	234	19.66
Cortland	691	554	24.73	416	323	28.79	275	231	19.05
Delaware	539	430	25.35	335	283	18.37	204	147	38.78
Dutchess	1,487	1,157	28.52	382	351	8.83	1,105	806	37.10
Erie	15,093	13,906	8.56	3,807	3,567	6.77	11,286	10,339	9.19
Essex	460	398	15.62	200	194	3.09	260	204	27.45
Franklin	800	791	1.14	328	358	-8.38	472	433	9.01
Fulton	641	464	38.15	294	205	43.41	347	259	33.98
Genesee	272	233	17.67	114	114	0.00	158	119	32.77
Greene	389	297	31.42	228	169	34.91	161	128	25.78
Hamilton	18	22	-18.18	5	12	-58.33	13	10	30.00
Herkimer	342	309	10.36	147	148	-0.68	195	161	21.12
Jefferson	1,314	953	38.03	602	427	40.98	712	526	35.36
Lewis	283	268	5.22	140	142	-1.41	143	126	13.49
Livingston	585	491	18.94	239	206	16.02	346	285	21.40
Madison	326	256	26.95	209	177	18.08	117	79	48.10
Monroe	10,555	9,787	7.85	2,906	2,614	11.17	7,649	7,173	6.64
Montgomery	439	308	42.53	253	171	47.95	186	137	35.77
Nassau	3,783	2,955	28.02	896	773	15.91	2,887	2,182	32.31
Niagara	2,929	2,865	2.20	1,002	963	4.05	1,927	1,902	1.31
Oneida	2,737	2,541	7.71	1,001	829	20.75	1,736	1,712	1.40
Onondaga	5,368	4,366	22.95	1,949	1,640	18.84	3,419	2,726	25.42
Ontario	791	629	25.60	253	207	22.22	538	422	27.49
Orange	3,265	2,763	18.17	1,775	1,617	9.77	1,490	1,146	30.02
Orleans	436	408	6.62	181	155	16.77	255	253	0.79
Oswego	1,171	1,005	16.62	587	520	12.88	584	485	20.41
Otsego	277	264	4.91	169	178	-5.06	108	86	25.58
Putnam	221	129	70.54	82	48	70.83	139	81	71.60
Rensselaer	1,181	970	21.75	277	292	-5.14	904	678	33.33
Rockland	2,213	2,083	6.19	1,492	1,344	11.01	721	739	-2.44
St. Lawrence	1,942	1,898	2.32	957	925	3.46	985	973	1.23
Saratoga	458	391	17.14	228	199	14.57	230	192	19.79
Schenectady	1,320	944	39.98	528	413	27.85	792	531	49.15
Schoharie	244	214	14.02	124	106	16.98	120	108	11.11
Schuyler	169	162	4.32	76	93	-18.28	93	69	34.78
Seneca	151	125	20.80	80	66	21.21	71	59	20.34
Steuben	1,202	1,045	15.02	572	465	23.01	630	580	8.62
Suffolk	7,604	6,639	14.54	2,585	2,363	9.39	5,019	4,276	17.38
Sullivan	640	591	8.47	327	333	-1.80	313	258	21.32
Tioga	440	430	2.33	228	251	-9.16	212	179	18.44
Tompkins	802	591	35.93	343	241	42.32	459	350	31.14
Ulster	1,229	1,230	0.00	524	535	-2.06	705	695	1.44
Warren	220	178	23.60	90	85	5.88	130	93	39.78
Washington	419	339	23.24	217	182	19.23	202	157	28.66
Wayne	708	603	17.61	285	243	17.28	423	360	17.50
Westchester	9,406	8,372	12.36	1,923	1,635	17.61	7,483	6,737	11.07
Wyoming	180	182	-1.10	77	80	-3.75	103	102	0.98
Yates	283	193	46.63	146	111	31.53	137	82	67.07

Table A.4  
Calendar Year Monthly Average Recipient Change For Major Social Services Programs By Social Services District

1991 versus 1990  
January - December

Social Services District	Medical Assistance Eligibles			Medical Only Eligibles			Medical Assistance Beneficiaries *		
	Current Year	Previous Year	Percent Change	Current Year	Previous Year	Percent Change	Current Year	Previous Year	Percent Change
New York State	2,568,518	2,359,673	8.85	691,952	645,757	7.15	1,442,635	1,323,442	9.01
New York City	1,614,380	1,495,638	7.94	388,182	371,951	4.36	914,165	848,181	7.78
Rest of State	954,138	864,035	10.43	303,770	273,806	10.94	528,470	475,261	11.20
Albany	23,857	20,649	15.54	6,763	6,133	10.27	13,546	11,791	14.88
Allegany	7,690	7,119	8.02	2,460	2,233	10.17	4,012	3,668	9.38
Broome	21,641	19,195	12.74	7,431	7,009	6.02	12,137	10,889	11.46
Cattaraugus	10,787	9,932	8.61	4,448	3,933	13.09	5,731	5,351	7.10
Cayuga	8,538	7,889	8.23	3,310	2,826	17.13	4,836	4,423	9.34
Chautauqua	20,262	18,847	7.51	6,574	6,016	9.28	10,221	9,704	5.33
Chemung	12,495	11,702	6.78	4,260	4,024	5.86	8,446	7,487	12.81
Chenango	5,774	5,040	14.56	2,605	2,278	14.35	3,090	2,655	16.38
Clinton	9,354	8,497	10.09	3,885	3,554	9.31	5,068	4,630	9.46
Columbia	5,689	5,043	12.81	1,930	1,833	5.29	3,021	2,681	12.68
Cortland	5,301	4,820	9.98	1,771	1,690	4.79	3,060	2,759	10.91
Delaware	4,948	4,311	14.78	1,836	1,594	15.18	2,731	2,348	16.31
Dutchess	15,882	13,482	17.80	4,682	3,878	20.73	8,963	7,620	17.62
Erie	123,104	115,318	6.75	29,379	26,296	11.72	67,375	62,269	8.20
Essex	4,804	4,414	8.84	2,061	1,969	4.67	2,638	2,452	7.59
Franklin	6,803	6,289	8.17	2,529	2,322	8.91	3,563	3,327	7.09
Fulton	7,102	6,388	11.18	3,008	2,831	6.25	3,918	3,675	6.61
Genesee	4,506	3,967	13.59	2,037	1,766	15.35	2,531	2,223	13.86
Greene	4,165	3,718	12.02	1,650	1,520	8.55	2,282	2,054	11.10
Hamilton	417	387	7.75	256	242	5.79	236	209	12.92
Herkimer	6,722	5,772	16.46	3,133	2,699	16.08	3,654	3,100	17.87
Herkimer	12,685	10,898	16.40	4,304	3,822	12.61	6,688	5,678	17.79
Jefferson	3,258	2,950	10.44	1,582	1,370	15.47	1,711	1,532	11.68
Lewis	5,001	4,423	13.07	1,756	1,522	15.37	2,776	2,502	10.95
Livingston	5,152	4,486	14.85	2,343	2,035	15.14	2,873	2,482	15.75
Madison	85,036	78,984	7.66	15,888	14,502	9.56	49,453	45,743	8.11
Monroe	6,358	5,844	8.80	2,925	2,837	3.10	3,681	3,379	8.94
Montgomery	56,292	48,986	14.91	22,726	19,617	15.85	31,938	27,966	14.20
Nassau									
Niagara	24,665	23,331	5.72	7,853	7,327	7.18	13,553	12,613	7.45
Oneida	30,482	27,975	8.96	10,849	9,598	13.03	15,730	14,335	9.73
Onondaga	49,209	43,908	12.07	13,804	12,095	14.13	26,612	22,923	16.09
Ontario	6,921	6,057	14.26	1,954	1,788	9.28	3,731	3,284	13.61
Orange	29,191	25,454	14.68	11,753	10,509	11.84	15,967	13,530	18.01
Orleans	4,735	4,415	7.25	1,894	1,663	13.89	2,575	2,401	7.25
Oswego	13,845	12,216	13.33	5,604	4,867	15.14	6,917	6,185	11.84
Otsego	5,538	4,967	11.50	2,814	2,516	11.84	2,948	2,618	12.61
Putnam	2,380	1,994	19.36	1,071	901	18.87	1,452	1,248	16.35
Rensselaer	14,048	12,298	14.23	5,101	4,530	12.60	7,571	6,634	14.12
Rockland	19,803	18,014	9.93	9,161	8,268	10.80	10,910	9,838	10.90
St. Lawrence	15,856	14,837	6.87	5,791	5,396	7.32	8,116	7,570	7.21
Saratoga	9,493	8,329	13.98	4,965	4,318	14.98	5,540	4,789	15.68
Schenectady	14,022	12,145	15.45	4,850	4,433	9.41	8,030	6,941	15.69
Schoharie	3,144	2,839	10.74	1,507	1,338	12.63	1,645	1,478	11.30
Schuyler	2,131	1,815	17.41	919	783	17.37	1,274	1,069	19.18
Seneca	2,474	2,228	11.04	1,146	1,031	11.15	1,358	1,186	14.50
Steuben	11,854	10,692	10.87	4,101	3,737	9.74	6,207	5,732	8.29
Suffolk	81,077	72,440	11.92	21,127	19,261	9.69	45,801	40,189	13.96
Sullivan	8,673	7,743	12.01	3,373	3,151	7.05	4,705	4,259	10.47
Tioga	4,783	4,331	10.44	1,986	1,918	3.55	2,412	2,203	9.49
Tompkins	6,606	5,936	11.29	2,484	2,380	4.37	3,661	3,221	13.66
Ulster	14,800	13,503	9.61	4,394	4,065	8.09	8,708	7,853	10.89
Warren	4,962	4,434	11.91	2,433	2,176	11.81	3,005	2,582	16.38
Washington	5,381	4,718	14.05	2,120	1,909	11.05	3,169	2,717	16.64
Wayne	7,324	6,571	11.46	1,950	1,788	9.06	3,994	3,635	9.88
Westchester	71,519	66,406	7.70	18,527	17,165	7.93	40,658	37,722	7.78
Wyoming	2,983	2,776	7.46	1,513	1,386	9.16	1,675	1,559	7.44
Yates	2,616	2,313	13.10	1,194	1,158	3.11	1,458	1,279	14.00

\* Detail may not add to totals due to unduplication of beneficiaries across eligibility categories.

Table A.5  
Calendar Year Monthly Average Recipient Change For Major Social Services Programs By Social Services District

1991 versus 1990  
January - December

Social Services District	SSI Recipients			Food Stamp			Non Public Assistance Food Stamp		
	Current Year	Previous Year	Percent Change	Current Year	Previous Year	Percent Change	Current Year	Previous Year	Percent Change
New York State	416,972	387,732	7.54	1,766,753	1,585,909	11.40	392,010	354,574	10.56
New York City	259,925	242,333	7.26	1,114,076	1,016,729	9.57	179,337	176,715	1.48
Rest of State	157,047	145,399	8.01	652,677	569,180	14.67	212,673	177,859	19.57
Albany	4,099	3,834	6.91	18,732	13,578	37.96	7,594	5,641	34.62
Allegany	1,007	897	12.26	5,938	5,358	10.82	2,265	2,092	8.27
Broome	3,244	3,011	7.74	15,383	10,656	44.36	5,640	3,984	41.57
Cattaraugus	1,615	1,487	8.61	7,788	6,829	14.04	3,814	3,200	19.19
Cayuga	1,242	1,160	7.07	6,568	5,855	12.18	3,485	2,812	23.93
Chautauqua	2,797	2,546	9.86	14,636	13,538	8.11	5,109	4,636	10.20
Chemung	1,939	1,811	7.07	8,577	7,908	8.46	3,295	3,093	6.53
Chenango	833	784	6.25	4,153	3,556	16.79	2,145	1,875	14.40
Clinton	1,706	1,570	8.66	7,121	6,278	13.43	3,552	3,170	12.05
Columbia	1,117	1,037	7.71	3,933	3,306	18.97	1,677	1,468	14.24
Cortland	868	799	8.64	3,759	3,109	20.91	1,567	1,277	22.71
Delaware	990	893	10.86	3,730	3,088	20.79	1,787	1,459	22.48
Dutchess	3,210	3,131	2.52	9,287	7,071	31.34	2,464	1,891	30.30
Erie	18,360	17,059	7.61	98,301	90,414	8.72	25,882	20,710	24.96
Essex	723	689	4.93	3,409	2,910	17.15	1,418	1,253	13.17
Franklin	1,227	1,143	7.35	4,736	4,177	13.38	2,016	1,740	15.86
Fulton	1,207	1,105	9.23	4,642	3,860	20.26	1,950	1,561	24.92
Genesee	770	715	7.69	2,851	2,302	23.85	1,327	1,059	25.31
Greene	737	662	11.33	2,748	2,315	18.70	1,259	1,018	23.67
Hamilton	70	68	2.94	266	215	23.72	179	138	29.71
Herkimer	1,209	1,112	8.72	4,368	3,498	24.87	2,210	1,713	29.01
Jefferson	2,065	1,903	8.51	9,747	7,622	27.88	4,447	3,485	27.60
Lewis	514	481	6.86	2,209	2,019	9.41	1,217	1,069	13.84
Livingston	694	627	10.69	3,675	3,182	15.49	1,455	1,187	22.58
Madison	920	886	3.84	3,767	2,919	29.05	2,102	1,595	31.79
Monroe	11,481	10,477	9.58	66,978	65,208	2.71	11,673	10,490	11.28
Montgomery	1,119	1,058	5.77	4,583	3,966	15.56	2,654	2,404	10.40
Nassau	12,852	11,820	8.73	22,716	18,505	22.76	5,140	4,367	17.70
Niagara	3,366	3,106	8.37	18,277	16,775	8.95	6,559	5,739	14.29
Oneida	5,365	5,020	6.87	21,974	19,559	12.35	9,082	7,430	22.23
Onondaga	7,248	6,568	10.35	33,876	29,239	15.86	10,008	8,352	19.83
Ontario	1,080	1,020	5.88	5,084	4,194	21.22	1,658	1,341	23.64
Orange	3,990	3,670	8.72	18,700	15,416	21.30	7,261	6,198	17.15
Orleans	657	591	11.17	3,271	2,931	11.60	1,453	1,219	19.20
Oswego	1,791	1,697	5.54	9,207	7,517	22.48	3,734	3,017	23.77
Otsego	1,055	1,004	5.08	3,233	2,704	19.56	1,822	1,581	15.24
Putnam	505	464	8.84	970	822	18.00	325	287	13.24
Rensselaer	2,216	2,066	7.26	10,776	9,214	16.95	4,476	3,900	14.77
Rockland	3,608	3,335	8.19	11,969	10,666	12.22	5,720	4,947	15.63
St. Lawrence	2,622	2,407	8.93	11,119	10,258	8.39	4,590	4,223	8.69
Saratoga	1,674	1,576	6.22	5,832	4,731	23.27	3,348	2,714	23.36
Schenectady	2,381	2,247	5.96	9,317	7,001	33.08	3,182	2,449	29.93
Schoharie	547	504	8.53	2,267	1,838	23.34	1,270	963	31.88
Schuyler	346	328	5.49	1,401	1,142	22.68	722	607	18.95
Seneca	437	399	9.52	1,471	1,317	11.69	718	648	10.80
Steuben	1,982	1,846	7.37	8,729	7,810	11.77	3,752	3,400	10.35
Suffolk	15,788	14,422	9.47	48,857	41,408	17.99	10,222	8,657	18.08
Sullivan	1,959	1,776	10.30	5,081	4,229	20.15	2,257	1,907	18.35
Tioga	589	525	12.19	3,417	2,670	27.98	1,627	1,265	28.62
Tompkins	1,009	899	12.24	4,558	3,804	19.82	1,681	1,496	12.37
Ulster	2,842	2,613	8.76	9,643	8,081	19.33	3,173	2,500	26.92
Warren	1,051	969	8.46	3,249	2,645	22.84	1,808	1,451	24.60
Washington	1,028	969	6.09	3,582	3,001	19.36	1,747	1,521	14.86
Wayne	1,393	1,295	7.57	5,436	4,762	14.15	1,823	1,651	10.42
Westchester	11,110	10,586	4.95	42,755	38,796	10.20	7,183	6,187	16.10
Wyoming	479	448	6.92	1,970	1,713	15.00	1,115	901	23.75
Yates	314	284	10.56	2,055	1,695	21.24	1,034	921	12.27

Table B (Part I)  
**INCOME MAINTENANCE**  
 Monthly average cases and recipients and annual expenditures, by social services district  
 1991 SUMMARY

Social Services District	Total AFDC & HR			Aid to Families With Dependent Children				
	Cases	Recipients	Expenditures	Cases	Recipients	Children	Adults	Expenditures
New York State	655,575	1,419,440	\$3,558,003,950	379,730	1,073,445	716,101	357,344	\$2,431,270,372
New York City	444,087	939,388	2,272,084,019	248,410	692,534	466,536	225,998	1,516,234,289
Rest of State	211,488	480,052	1,285,919,931	131,320	380,911	249,565	131,346	915,036,083
Albany	5,544	12,558	33,107,388	3,503	10,040	6,687	3,353	23,685,431
Allegany	1,764	4,208	8,873,845	1,063	3,264	2,008	1,256	6,288,276
Broome	4,640	10,599	25,474,026	2,709	8,061	5,139	2,922	17,363,031
Cattaraugus	1,967	4,757	9,306,805	1,222	3,760	2,384	1,376	6,735,143
Cayuga	1,726	3,923	8,360,872	1,198	3,332	2,035	1,297	6,624,525
Chautauqua	4,642	10,853	22,193,515	2,791	8,422	5,371	3,051	15,620,895
Chemung	2,569	6,042	13,202,654	1,620	4,785	3,065	1,720	9,566,075
Chenango	886	2,271	4,474,640	591	1,858	1,181	677	3,426,569
Clinton	1,712	3,782	7,961,975	1,014	2,862	1,789	1,073	5,405,722
Columbia	1,101	2,558	5,664,564	708	2,049	1,281	768	4,129,273
Cortland	1,067	2,568	6,022,563	625	1,877	1,197	680	4,040,246
Delaware	865	2,100	4,506,334	523	1,561	988	573	3,073,546
Dutchess	3,504	7,658	21,557,162	2,182	6,171	4,059	2,112	14,889,242
Erie	32,686	71,737	168,391,678	19,630	56,644	36,848	19,796	117,044,647
Essex	908	2,097	4,474,581	526	1,637	1,005	632	3,051,331
Franklin	1,342	2,941	6,110,851	721	2,141	1,295	846	3,901,953
Fulton	1,231	2,831	5,949,691	743	2,190	1,388	802	4,084,775
Genesee	716	1,734	3,690,825	508	1,462	930	532	2,917,000
Greene	746	1,698	4,018,338	483	1,309	822	487	2,908,622
Hamilton	40	98	167,252	25	80	52	28	122,966
Herkimer	928	2,339	4,620,448	650	1,997	1,274	723	3,633,264
Jefferson	2,653	6,092	14,035,543	1,651	4,778	2,919	1,859	9,998,184
Lewis	479	1,212	2,141,087	276	929	586	343	1,489,211
Livingston	1,186	2,554	6,070,483	710	1,969	1,181	788	4,205,403
Madison	747	1,869	3,900,793	537	1,543	992	551	3,063,051
Monroe	25,083	57,337	166,615,881	15,941	46,782	31,546	15,236	121,032,750
Montgomery	879	2,325	4,405,696	600	1,886	1,245	641	3,304,032
Nassau	9,354	19,486	64,505,979	5,983	15,703	10,732	4,971	45,695,404
Niagara	6,002	12,934	31,252,992	3,603	10,005	6,353	3,652	21,583,131
Oneida	5,755	13,715	30,438,177	3,555	10,978	7,211	3,767	21,694,151
Onondaga	11,843	27,405	65,893,898	7,515	22,037	14,881	7,156	48,129,378
Ontario	1,711	3,754	8,999,178	1,037	2,963	1,830	1,133	6,270,461
Orange	5,165	13,179	32,817,234	3,245	9,914	6,792	3,122	23,440,421
Orleans	930	2,200	4,710,457	587	1,764	1,147	617	3,415,926
Oswego	2,544	6,322	13,582,377	1,681	5,151	3,252	1,899	10,245,038
Otsego	605	1,554	3,438,307	416	1,277	816	461	2,655,234
Putnam	405	784	2,958,491	225	563	344	219	1,725,119
Rensselaer	2,955	6,808	14,660,389	1,914	5,627	3,558	2,069	10,904,533
Rockland	2,682	6,876	19,658,565	1,566	4,663	3,202	1,461	13,162,069
St. Lawrence	3,415	7,686	15,717,913	1,915	5,744	3,442	2,302	10,531,430
Saratoga	1,122	2,737	5,746,602	797	2,279	1,469	810	4,471,731
Schenectady	2,820	6,562	15,759,967	1,794	5,242	3,435	1,807	11,153,473
Schoharie	460	1,090	2,524,917	277	846	523	323	1,778,498
Schuyler	378	843	1,830,527	236	674	407	267	1,332,142
Seneca	362	864	1,811,005	253	713	460	253	1,405,347
Steuben	2,325	5,508	11,399,578	1,434	4,306	2,688	1,618	8,125,846
Suffolk	19,060	44,284	146,559,277	12,815	36,680	24,555	12,125	112,875,227
Sullivan	1,311	3,306	7,143,732	877	2,666	1,780	886	5,509,252
Tioga	905	2,148	4,576,060	578	1,708	1,067	641	3,304,342
Tompkins	1,468	3,132	8,220,830	825	2,330	1,479	851	5,254,323
Ulster	3,003	7,006	19,264,992	2,013	5,777	3,771	2,006	14,499,353
Warren	598	1,435	3,370,437	429	1,215	762	453	2,654,103
Washington	937	2,184	5,189,514	621	1,765	1,102	663	3,860,593
Wayne	1,603	3,880	8,792,792	1,031	3,172	2,073	1,099	6,551,781
Westchester	19,237	39,516	165,306,574	10,767	30,110	20,156	9,954	108,015,740
Wyoming	441	1,012	2,150,825	295	832	508	324	1,594,636
Yates	481	1,101	2,338,855	286	818	503	315	1,592,232



Table B (Part II)  
INCOME MAINTENANCE  
Monthly average cases and recipients and annual expenditures, by social services district  
1991 SUMMARY

Social Services District	Aid to Families With Dependent Children									
	Basic Program					Unemployed Parent Program				
	Cases	Recipients	Children	Adults	Expenditures	Cases	Recipients	Children	Adults	Expenditures
New York State	366,473	1,017,187	684,490	332,697	\$2,334,141,920	13,257	56,258	31,611	24,647	\$97,128,452
New York City	244,971	677,522	457,933	219,589	1,490,802,329	3,439	15,012	8,603	6,409	25,431,960
Rest of State	121,502	339,665	226,557	113,108	843,339,591	9,818	41,246	23,008	18,238	71,696,492
Albany	3,364	9,463	6,367	3,096	22,670,526	139	577	320	257	1,014,905
Allegany	863	2,416	1,536	880	4,924,906	200	848	472	376	1,363,370
Broome	2,356	6,534	4,277	2,257	14,789,636	353	1,527	862	665	2,573,395
Cattaraugus	1,017	2,889	1,898	991	5,466,762	205	871	486	385	1,268,381
Cayuga	1,022	2,702	1,709	993	5,560,229	176	630	326	304	1,064,296
Chautauqua	2,480	7,084	4,618	2,466	13,595,086	311	1,338	753	585	2,025,809
Chemung	1,414	3,930	2,591	1,339	8,216,862	206	855	474	381	1,349,213
Chenango	503	1,487	977	510	2,861,977	88	371	204	167	564,592
Clinton	891	2,398	1,547	851	4,691,226	123	464	242	222	714,496
Columbia	625	1,698	1,091	607	3,579,710	83	351	190	161	549,563
Cortland	533	1,488	976	512	3,375,991	92	389	221	168	664,255
Delaware	447	1,249	818	431	2,577,755	76	312	170	142	495,791
Dutchess	2,017	5,475	3,679	1,796	13,592,963	165	696	380	316	1,296,279
Erie	18,379	51,151	33,730	17,421	108,259,436	1,251	5,493	3,118	2,375	8,785,211
Essex	425	1,209	773	436	2,387,223	101	428	232	196	664,108
Franklin	572	1,549	978	571	3,005,214	149	592	317	275	896,739
Fulton	655	1,823	1,179	644	3,545,079	88	367	209	158	539,696
Genesee	462	1,266	820	446	2,634,317	46	196	110	86	282,683
Greene	457	1,207	768	439	2,741,022	26	102	54	48	167,600
Hamilton	20	58	39	19	96,067	5	22	13	9	26,899
Herkimer	534	1,503	990	513	2,891,425	116	494	284	210	741,839
Jefferson	1,394	3,780	2,394	1,386	8,269,557	257	998	525	473	1,728,627
Lewis	212	641	421	220	1,092,363	64	288	165	123	396,848
Livingston	598	1,546	961	585	3,475,785	112	423	220	203	729,618
Madison	482	1,330	881	449	2,734,048	55	213	111	102	329,003
Monroe	15,422	44,460	30,180	14,280	116,493,001	519	2,322	1,366	956	4,539,749
Montgomery	547	1,656	1,116	540	2,992,335	53	230	129	101	311,697
Nassau	5,882	15,255	10,470	4,785	44,737,294	101	448	262	186	958,110
Niagara	3,341	8,950	5,777	3,173	19,935,373	262	1,055	576	479	1,647,758
Oneida	3,172	9,304	6,269	3,035	19,026,892	383	1,674	942	732	2,667,259
Onondaga	7,019	20,154	13,848	6,306	44,938,297	496	1,883	1,033	850	3,191,081
Ontario	923	2,478	1,561	917	5,487,989	114	485	269	216	782,472
Orange	3,094	9,281	6,438	2,843	22,202,019	151	633	354	279	1,238,402
Orleans	512	1,444	968	476	2,948,234	75	320	179	141	467,692
Oswego	1,386	3,949	2,586	1,363	8,269,035	295	1,202	666	536	1,976,003
Otsego	360	1,039	684	355	2,256,042	56	238	132	106	399,192
Putnam	210	505	313	192	1,567,550	15	58	31	27	157,569
Rensselaer	1,707	4,723	3,048	1,675	9,503,716	207	904	510	394	1,400,817
Rockland	1,480	4,265	2,961	1,304	12,284,109	86	398	241	157	877,960
St. Lawrence	1,472	3,963	2,483	1,480	7,753,557	443	1,781	959	822	2,777,873
Saratoga	734	2,046	1,347	699	4,097,375	63	233	122	111	374,356
Schenectady	1,662	4,690	3,123	1,567	10,257,904	132	552	312	240	895,569
Schoharie	240	693	440	253	1,528,935	37	153	83	70	249,563
Schuyler	195	513	323	190	1,074,301	41	161	84	77	257,841
Seneca	233	633	414	219	1,288,129	20	80	46	34	117,218
Steuben	1,203	3,349	2,165	1,184	6,666,945	231	957	523	434	1,458,901
Suffolk	12,276	34,319	23,215	11,104	106,859,808	539	2,361	1,340	1,021	6,015,419
Sullivan	811	2,389	1,626	763	5,059,901	66	277	154	123	449,351
Tioga	493	1,355	872	483	2,759,231	85	353	195	158	545,111
Tompkins	713	1,864	1,214	650	4,429,690	112	466	265	201	824,633
Ulster	1,844	5,075	3,386	1,689	13,055,598	169	702	385	317	1,443,755
Warren	388	1,052	678	374	2,370,411	41	163	84	79	283,692
Washington	552	1,491	960	531	3,377,410	69	274	142	132	483,183
Wayne	903	2,591	1,736	855	5,589,861	128	581	337	244	961,926
Westchester	10,497	28,938	19,482	9,456	104,691,006	270	1,172	674	498	3,324,734
Wyoming	260	694	434	260	1,418,380	35	138	74	64	176,256
Yates	249	671	422	249	1,384,098	37	147	81	66	208,134

Table B (Part III)  
 INCOME MAINTENANCE  
 Monthly average cases and recipients and annual expenditures, by social services district  
 1991 SUMMARY

Social Services District	Home Relief							
	Total		Family		One-Person	Expenditures		
	Cases	Recipients	Cases	Recipients	Cases	Total	Family	One-Person
New York State	275,845	345,995	62,261	132,411	213,584	\$1,126,733,578	\$295,499,348	\$831,234,230
New York City	195,677	246,854	46,002	97,179	149,675	755,849,730	214,268,051	541,581,679
Rest of State	80,168	99,141	16,259	35,232	63,909	370,883,848	81,231,297	289,652,551
Albany	2,041	2,518	353	830	1,688	9,421,957	1,951,705	7,470,252
Allegany	701	944	196	439	505	2,585,569	757,646	1,827,923
Broome	1,931	2,538	517	1,124	1,414	8,110,995	2,342,440	5,768,555
Cattaraugus	745	997	209	461	536	2,571,662	774,263	1,797,399
Cayuga	528	591	104	167	424	1,736,347	354,067	1,382,280
Chautauqua	1,851	2,431	617	1,197	1,234	6,572,620	2,410,482	4,162,138
Chemung	949	1,257	264	572	685	3,636,579	1,062,530	2,574,049
Chenango	295	413	115	233	180	1,048,071	426,806	621,265
Clinton	698	920	179	401	519	2,556,253	739,620	1,816,633
Columbia	393	509	113	229	280	1,535,291	480,123	1,055,168
Cortland	442	691	167	416	275	1,982,317	859,737	1,122,580
Delaware	342	539	138	335	204	1,432,788	649,997	782,791
Dutchess	1,322	1,487	217	382	1,105	6,667,920	1,111,824	5,556,096
Erie	13,056	15,093	1,770	3,807	11,286	51,347,031	8,329,146	43,017,885
Essex	382	460	122	200	260	1,423,250	471,864	951,386
Franklin	621	800	149	328	472	2,208,898	581,346	1,627,552
Fulton	488	641	141	294	347	1,864,916	649,109	1,215,807
Genesee	208	272	50	114	158	773,825	213,531	560,294
Greene	263	389	102	228	161	1,109,716	481,906	627,810
Hamilton	15	18	2	5	13	44,286	8,094	36,192
Herkimer	278	342	83	147	195	987,184	296,444	690,740
Jefferson	1,002	1,314	290	602	712	4,037,359	1,277,103	2,760,256
Lewis	203	283	60	140	143	651,876	208,972	442,904
Livingston	476	585	130	239	346	1,865,080	541,051	1,324,029
Madison	210	326	93	209	117	837,742	385,105	452,637
Monroe	9,142	10,555	1,493	2,906	7,649	45,583,131	8,033,476	37,549,655
Montgomery	279	439	93	253	186	1,101,664	422,258	679,406
Nassau	3,371	3,783	484	896	2,887	18,810,575	3,006,437	15,804,138
Niagara	2,399	2,929	472	1,002	1,927	9,669,861	2,107,961	7,561,900
Oneida	2,200	2,737	464	1,001	1,736	8,744,026	2,086,821	6,657,205
Onondaga	4,328	5,368	909	1,949	3,419	17,764,520	4,091,312	13,673,208
Ontario	674	791	136	253	538	2,728,717	586,998	2,141,719
Orange	1,920	3,265	430	1,775	1,490	9,376,813	2,639,965	6,736,848
Orleans	343	436	88	181	255	1,294,531	347,611	946,920
Oswego	863	1,171	279	587	584	3,337,339	1,232,696	2,104,643
Otsego	189	277	81	169	108	783,073	352,675	430,398
Putnam	180	221	41	82	139	1,233,372	307,098	926,274
Rensselaer	1,041	1,181	137	277	904	3,755,856	552,845	3,203,011
Rockland	1,116	2,213	395	1,492	721	6,496,496	2,628,888	3,867,608
St. Lawrence	1,500	1,942	515	957	985	5,186,483	1,887,456	3,299,027
Saratoga	325	458	95	228	230	1,274,871	445,147	829,724
Schenectady	1,026	1,320	234	528	792	4,606,494	1,158,178	3,448,316
Schoharie	183	244	63	124	120	746,419	249,666	496,753
Schuyler	142	169	49	76	93	498,385	180,006	318,379
Seneca	109	151	38	80	71	405,658	141,120	264,538
Steuben	891	1,202	261	572	630	3,273,732	1,079,069	2,194,663
Suffolk	6,245	7,604	1,226	2,585	5,019	33,684,050	7,624,476	26,059,574
Sullivan	434	640	121	327	313	1,634,480	596,430	1,038,050
Tioga	327	440	115	228	212	1,271,718	485,352	786,366
Tompkins	643	802	184	343	459	2,966,507	834,782	2,131,725
Ulster	990	1,229	285	524	705	4,765,639	1,447,090	3,318,549
Warren	169	220	39	90	130	716,334	175,340	540,994
Washington	316	419	114	217	202	1,328,921	505,424	823,497
Wayne	572	708	149	285	423	2,241,005	612,292	1,628,713
Westchester	8,470	9,406	987	1,923	7,483	57,290,834	7,604,269	49,686,565
Wyoming	146	180	43	77	103	556,189	183,813	372,376
Yates	195	283	58	146	137	746,623	259,435	487,188

Table C  
FOOD STAMPS  
Household, persons and value of redeemed ATP's by social services district  
1991 SUMMARY

Social Services District	Total			Public Assistance			Non-Public Assistance		
	Household	Persons	ATP Value	Household	Persons	ATP Value	Household	Persons	ATP Value
New York State	795,986	1,766,753	\$1,364,224,660	653,074	1,374,743	\$1,099,719,800	142,912	392,010	\$264,504,860
New York City	509,819	1,114,076	880,932,511	445,660	934,739	749,660,619	64,159	179,337	131,271,892
Rest of State	286,167	652,677	483,292,149	207,414	440,004	350,059,181	78,753	212,673	133,232,968
Albany	8,532	18,731	14,297,303	5,413	11,137	9,030,163	3,119	7,594	5,267,140
Allegany	2,341	5,938	4,404,868	1,558	3,673	3,033,475	783	2,265	1,371,393
Broome	6,742	15,383	11,499,278	4,556	9,743	8,031,640	2,186	5,640	3,467,638
Cattaraugus	3,067	7,788	5,670,241	1,772	3,974	3,325,528	1,295	3,814	2,344,713
Cayuga	2,543	6,568	5,032,601	1,360	3,083	2,639,595	1,183	3,485	2,393,006
Chautauqua	6,000	14,635	11,194,667	4,179	9,526	8,103,241	1,821	5,109	3,091,426
Chemung	3,509	8,577	6,024,444	2,327	5,282	4,123,655	1,182	3,295	1,900,789
Chenango	1,594	4,153	3,112,401	853	2,008	1,751,397	741	2,145	1,361,004
Clinton	3,180	7,121	5,125,734	1,913	3,569	2,951,313	1,267	3,552	2,174,421
Columbia	1,773	3,933	2,847,439	1,066	2,256	1,831,285	707	1,677	1,016,154
Cortland	1,514	3,759	2,849,128	976	2,192	1,860,329	538	1,567	988,799
Delaware	1,502	3,730	2,544,232	882	1,943	1,493,986	620	1,787	1,050,246
Dutchess	4,214	9,287	7,010,939	3,173	6,823	5,567,563	1,041	2,464	1,443,376
Erie	45,735	98,300	77,139,085	34,902	72,418	60,604,802	10,833	25,882	16,534,283
Essex	1,466	3,410	2,305,653	945	1,992	1,532,210	521	1,418	773,443
Franklin	2,007	4,736	3,488,827	1,314	2,720	2,236,934	693	2,016	1,251,893
Fulton	1,946	4,643	3,418,030	1,292	2,693	2,254,815	654	1,950	1,163,215
Genesee	1,181	2,850	2,132,890	704	1,523	1,318,624	477	1,327	814,266
Greene	1,200	2,748	2,009,801	724	1,489	1,215,298	476	1,259	794,503
Hamilton	106	266	183,571	45	87	67,411	61	179	116,160
Herkimer	1,778	4,369	3,237,961	1,013	2,159	1,808,183	765	2,210	1,429,778
Jefferson	3,807	9,747	6,645,981	2,418	5,300	4,116,942	1,389	4,447	2,529,039
Lewis	783	2,210	1,678,615	408	993	873,019	375	1,217	805,596
Livingston	1,663	3,674	2,876,244	1,100	2,219	1,968,969	563	1,455	907,275
Madison	1,530	3,767	2,764,946	788	1,665	1,340,936	742	2,102	1,424,010
Monroe	31,032	66,978	48,189,162	27,012	55,305	41,467,932	4,020	11,673	6,721,230
Montgomery	1,769	4,583	3,313,835	881	1,929	1,563,479	888	2,654	1,750,356
Nassau	11,468	22,715	15,634,751	8,984	17,575	12,574,527	2,484	5,140	3,060,224
Niagara	8,175	18,277	13,582,941	5,641	11,718	9,585,909	2,534	6,559	3,997,032
Oneida	9,328	21,974	16,054,073	6,090	12,892	10,577,556	3,238	9,082	5,476,517
Onondaga	14,130	33,876	27,182,370	10,651	23,868	20,641,925	3,479	10,008	6,540,445
Ontario	2,315	5,083	4,087,805	1,644	3,425	3,036,257	671	1,658	1,051,548
Orange	7,128	18,701	14,186,083	4,812	11,440	9,140,161	2,316	7,261	5,045,922
Orleans	1,369	3,270	2,380,231	852	1,817	1,502,236	517	1,453	877,995
Oswego	3,505	9,207	7,269,197	2,308	5,473	4,818,326	1,197	3,734	2,450,871
Otsego	1,329	3,233	2,234,402	663	1,411	1,087,538	666	1,822	1,146,864
Putnam	515	971	695,028	350	646	489,330	165	325	205,698
Rensselaer	4,689	10,776	7,998,489	3,023	6,300	5,230,026	1,666	4,476	2,768,463
Rockland	3,959	11,970	8,533,139	2,596	6,250	4,122,675	1,363	5,720	4,410,464
St. Lawrence	4,428	11,119	8,563,458	2,897	6,529	5,695,181	1,531	4,590	2,868,277
Saratoga	2,368	5,832	4,177,751	1,178	2,484	1,965,597	1,190	3,348	2,212,154
Schenectady	4,141	9,316	7,084,555	2,931	6,134	5,036,238	1,210	3,182	2,048,317
Schoharie	917	2,268	1,585,124	477	998	769,316	440	1,270	815,808
Schuyler	541	1,401	1,088,905	303	679	603,756	238	722	485,149
Seneca	703	1,471	1,073,436	378	753	630,406	325	718	443,030
Steuben	3,388	8,729	6,869,925	2,180	4,977	4,372,408	1,208	3,752	2,497,517
Suffolk	21,808	48,857	32,887,024	17,495	38,635	26,848,057	4,313	10,222	6,038,967
Sullivan	2,078	5,081	3,543,752	1,278	2,824	2,200,906	800	2,257	1,342,846
Tioga	1,308	3,418	2,541,000	776	1,791	1,509,539	532	1,627	1,031,461
Tompkins	2,047	4,558	3,565,752	1,423	2,877	2,422,606	624	1,681	1,143,146
Ulster	4,442	9,643	6,412,018	3,107	6,470	4,556,055	1,335	3,173	1,855,963
Warren	1,369	3,249	2,153,496	736	1,441	1,058,144	633	1,808	1,095,352
Washington	1,457	3,582	2,435,000	880	1,835	1,393,109	577	1,747	1,041,891
Wayne	2,373	5,436	4,179,745	1,619	3,613	3,082,540	754	1,823	1,097,205
Westchester	20,689	42,755	31,259,277	17,695	35,572	27,348,247	2,994	7,183	3,911,030
Wyoming	812	1,970	1,455,894	405	855	741,590	407	1,115	714,304
Yates	874	2,055	1,579,652	468	1,021	906,296	406	1,034	673,356

Table D (Part I)  
**MEDICAL ASSISTANCE**  
 Monthly average number of Medical Assistance eligibles by category of eligibility by social services district  
 1991 SUMMARY

Social Services District	Medical and Subsistence						
	Total M.A. Eligibles	SSI Aged	SSI Blind and Disabled	ADC Adults	ADC Children	HR Adults	HR Children
New York State	2,568,518	156,645	280,780	334,190	767,228	255,510	82,213
New York City	1,614,380	110,556	159,905	213,871	500,219	182,575	59,072
Rest of State	954,138	46,089	120,875	120,319	267,009	72,935	23,141
Albany	23,857	1,112	3,240	2,952	7,225	2,007	558
Allegany	7,690	290	801	1,154	2,099	633	252
Broome	21,642	948	2,405	2,686	5,557	1,908	706
Cattaraugus	10,788	525	1,127	1,205	2,508	704	270
Cayuga	8,539	518	811	1,161	2,158	477	104
Chautauqua	20,262	787	2,127	2,760	5,654	1,695	664
Chemung	12,497	334	1,763	1,558	3,320	894	367
Chenango	5,778	285	594	617	1,270	258	147
Clinton	9,355	590	1,191	936	1,875	634	244
Columbia	5,688	329	833	701	1,391	351	154
Cortland	5,302	257	653	637	1,296	427	262
Delaware	4,947	371	649	524	1,033	326	209
Dutchess	15,882	846	2,518	1,952	4,371	1,243	270
Erie	123,066	4,508	15,323	18,578	39,829	12,690	2,777
Essex	4,804	230	501	559	1,017	333	103
Franklin	6,804	399	919	798	1,377	598	183
Fulton	7,102	370	891	719	1,456	448	210
Genesee	4,508	242	553	455	960	186	74
Greene	4,165	262	521	468	898	233	133
Hamilton	419	28	44	23	49	15	3
Herkimer	6,722	337	898	659	1,346	267	83
Jefferson	12,685	527	1,606	1,724	3,199	915	409
Lewis	3,258	150	386	303	594	184	59
Livingston	5,002	175	559	693	1,267	393	159
Madison	5,152	295	666	471	1,071	191	115
Monroe	85,038	3,229	9,076	13,291	33,395	8,015	2,143
Montgomery	6,360	350	835	539	1,286	260	164
Nassau	56,293	4,825	8,771	4,812	11,502	2,963	693
Niagara	24,665	968	2,580	3,269	6,944	2,391	660
Oneida	30,484	1,397	4,418	3,338	7,704	2,047	730
Onondaga	49,209	1,640	6,073	6,380	16,136	3,856	1,320
Ontario	6,921	326	810	1,045	2,005	612	169
Orange	29,192	1,364	2,875	2,855	7,257	1,797	1,290
Orleans	4,736	165	529	542	1,195	297	114
Oswego	13,845	521	1,383	1,725	3,522	774	316
Otsego	5,538	359	744	451	892	171	108
Putnam	2,380	113	401	215	363	176	41
Rensselaer	14,048	506	1,756	1,795	3,719	986	186
Rockland	19,805	1,512	2,243	1,420	3,364	1,014	1,090
St. Lawrence	15,857	898	1,830	1,990	3,498	1,384	465
Saratoga	9,493	438	1,380	746	1,558	283	124
Schenectady	14,021	539	1,903	1,654	3,729	975	371
Schoharie	3,145	213	367	300	546	146	66
Schuyler	2,132	139	223	250	440	130	31
Seneca	2,475	129	323	229	497	98	52
Steuben	11,855	463	1,629	1,496	2,939	855	371
Suffolk	81,079	4,628	12,206	11,470	26,187	4,145	1,316
Sullivan	8,675	572	1,435	803	1,883	387	221
Tioga	4,782	154	448	602	1,149	319	124
Tompkins	6,608	214	819	762	1,546	569	213
Ulster	14,800	691	2,361	1,919	4,105	1,017	313
Warren	4,963	297	770	404	837	165	56
Washington	5,382	333	715	601	1,198	301	113
Wayne	7,325	446	1,046	992	2,207	496	187
Westchester	71,518	3,703	8,772	9,570	21,520	7,980	1,447
Wyoming	2,983	144	353	280	526	123	44
Yates	2,617	98	222	281	540	193	88

Table D (Part II)  
 MEDICAL ASSISTANCE  
 Monthly average number of Medical Assistance eligibles by category of eligibility by social services district  
 1991 SUMMARY

Medical Only							Social Services District
Aged	Blind & Disabled	ADC Related Adults	ADC Related Children	HR Related Adults	HR Related Children	Other	
145,989	62,499	86,986	261,563	59,017	73,732	2,166	New York State
68,294	27,940	44,689	164,794	39,987	40,586	1,892	New York City
77,695	34,559	42,297	96,769	19,030	33,146	274	Rest of State
2,234	702	814	2,076	300	636	1	Albany
417	229	433	884	212	284	2	Allegany
2,008	718	1,012	2,290	573	831	0	Broome
913	306	696	1,648	402	483	1	Cattaraugus
660	321	617	1,179	165	365	3	Cayuga
1,509	541	1,105	2,021	468	920	11	Chautauqua
884	385	685	1,625	239	442	1	Chemung
411	183	473	1,001	185	317	37	Chenango
643	337	751	1,439	327	387	1	Clinton
583	255	271	502	86	232	0	Columbia
392	173	278	590	101	236	0	Cortland
376	143	337	675	101	203	0	Delaware
1,463	650	568	1,141	114	744	2	Dutchess
7,621	3,705	3,852	9,857	2,085	2,239	2	Erie
451	218	326	727	150	189	0	Essex
432	294	403	868	215	318	0	Franklin
670	274	492	1,010	208	354	0	Fulton
437	183	345	709	75	233	56	Genesee
480	132	232	560	107	139	0	Greene
43	38	40	108	25	3	0	Hamilton
661	221	462	1,018	269	457	44	Herkimer
813	371	726	1,682	285	383	45	Jefferson
242	132	273	583	135	217	0	Lewis
425	169	301	644	68	149	0	Livingston
460	157	423	888	155	260	0	Madison
4,747	2,074	1,881	5,314	699	1,169	5	Monroe
590	376	370	1,058	211	294	27	Montgomery
8,541	3,156	2,646	6,098	757	1,523	6	Nassau
1,812	761	1,214	2,773	591	700	2	Niagara
2,435	920	1,574	3,497	1,097	1,326	1	Oneida
3,038	1,645	1,807	5,193	987	1,131	3	Onondaga
584	179	293	697	77	120	4	Ontario
1,854	1,160	1,486	3,468	1,060	2,725	1	Orange
361	182	331	716	113	191	0	Orleans
770	442	1,120	2,200	380	692	0	Oswego
480	210	481	1,056	182	403	1	Otsego
429	161	114	243	50	74	0	Putnam
1,502	583	743	1,550	261	460	1	Rensselaer
1,805	803	757	1,331	1,031	3,435	0	Rockland
964	422	1,070	2,149	453	733	1	St. Lawrence
1,015	634	793	1,567	338	617	0	Saratoga
1,501	533	575	1,576	341	324	0	Schenectady
229	119	288	543	109	219	0	Schoharie
170	78	153	308	73	137	0	Schuyler
256	115	191	423	44	118	0	Seneca
747	330	659	1,469	372	525	0	Steuben
7,115	3,812	2,455	5,573	716	1,454	2	Suffolk
663	315	497	1,239	186	472	2	Sullivan
350	138	330	747	165	255	1	Tioga
386	252	428	866	218	333	2	Tompkins
1,246	535	544	1,236	249	581	3	Ulster
522	279	458	838	125	212	0	Warren
506	212	341	805	88	169	0	Washington
524	206	337	686	58	139	1	Wayne
6,811	2,896	1,948	4,846	734	1,287	4	Westchester
315	102	287	575	101	133	0	Wyoming
199	92	211	404	114	174	1	Yates

Table E (Part 1)  
 MEDICAL ASSISTANCE  
 Medical Assistance expenditures by major types of care  
 1991 SUMMARY

Social Services District	Total Medical Expenditures	Hospital Inpatient	Hospital Outpatient	Free Standing Clinic	Skilled Nursing Facilities	Intermediate Care Facilities	Personal Care	Home Health Services
New York State	\$13,557,859,833	\$4,777,586,867	\$904,464,506	\$509,641,568	\$3,278,008,945	\$299,306,763	\$1,514,417,534	\$406,182,635
New York City	9,127,096,965	3,759,534,763	615,976,399	306,251,250	1,676,897,806	145,538,603	1,145,225,107	295,449,610
Rest of State	4,430,762,868	1,018,052,104	288,488,107	203,390,318	1,601,111,139	153,768,160	369,192,427	110,733,025
Albany	119,502,966	24,032,613	7,502,628	10,351,955	46,166,019	3,518,602	5,667,686	3,445,750
Allegany	18,546,485	4,065,855	1,223,449	941,625	6,046,731	394,200	905,636	680,787
Broome	76,669,286	15,009,411	6,403,719	2,863,710	31,792,501	2,088,180	3,838,551	2,634,652
Cattaraugus	31,740,977	6,693,782	1,435,259	1,817,355	11,399,733	1,202,056	1,359,440	1,264,314
Cayuga	28,282,307	7,678,814	1,056,244	1,971,183	10,723,973	88,573	493,600	647,622
Chautauqua	63,162,541	12,286,305	3,917,263	3,558,308	24,294,908	2,496,979	4,891,995	541,679
Chemung	42,125,507	8,108,406	2,917,896	1,571,706	17,296,906	1,945,320	1,144,679	1,187,800
Chenango	16,953,848	3,604,179	1,282,368	668,456	6,866,594	83,860	537,989	356,902
Clinton	27,203,739	7,408,805	954,589	1,345,626	9,383,265	590,360	751,512	839,895
Columbia	26,723,815	4,096,680	604,415	1,544,860	14,984,357	1,797,080	344,952	356,676
Cortland	17,360,892	4,791,509	570,411	1,426,279	4,109,909	145,570	1,328,037	782,621
Delaware	18,658,091	4,317,656	1,028,665	505,731	8,139,968	419,884	413,011	452,605
Dutchess	91,569,444	21,249,664	3,417,643	5,870,319	36,824,635	6,281,677	5,038,324	829,762
Erie	465,840,882	120,351,452	44,646,498	24,281,807	125,421,445	11,399,286	49,511,629	9,659,509
Essex	15,553,112	3,305,349	620,238	720,422	6,779,566	155,487	830,274	262,202
Franklin	20,745,187	3,741,617	604,641	1,327,804	6,537,771	324,335	2,272,435	1,261,041
Fulton	27,911,034	4,133,755	1,504,920	954,307	12,227,122	2,128,991	742,324	1,526,426
Genesee	18,418,024	3,546,003	872,308	902,532	7,488,640	913,542	551,134	662,583
Greene	17,679,640	3,071,088	503,591	635,682	8,985,395	727,503	748,598	430,818
Hamilton	1,678,775	243,117	41,497	33,596	789,602	10,745	133,780	191,489
Herkimer	24,874,869	3,882,892	1,624,096	651,585	13,085,183	196,464	580,841	388,761
Jefferson	37,547,870	8,054,133	1,634,714	1,715,732	15,576,839	376,997	512,542	1,537,001
Lewis	10,357,772	2,334,532	391,201	456,518	4,828,199	134,622	121,297	86,617
Livingston	16,220,350	2,941,348	854,091	685,401	8,131,335	415,918	186,398	160,564
Madison	19,386,153	4,343,540	893,711	834,226	8,803,287	253,890	1,563	840,982
Monroe	325,675,446	78,333,866	30,208,467	18,149,604	97,129,126	10,498,096	3,667,354	29,775,960
Montgomery	28,565,419	5,717,415	1,745,561	716,781	11,990,581	2,286,027	198,481	1,278,680
Nassau	518,997,609	113,004,608	18,047,062	14,472,456	208,794,841	21,413,791	81,414,806	4,698,022
Niagara	85,433,100	22,811,881	6,072,197	3,444,184	28,012,516	2,429,111	7,597,725	1,349,293
Oneida	99,996,396	19,342,847	8,668,497	3,414,240	41,396,497	1,602,926	2,427,965	2,895,799
Onondaga	189,939,480	40,786,721	18,421,519	9,264,678	70,938,314	2,830,786	3,932,581	11,391,700
Ontario	26,418,102	4,935,742	1,522,154	615,963	12,780,370	532,114	689,286	814,488
Orange	116,442,364	35,281,098	6,063,036	5,947,953	36,528,838	3,935,359	6,721,427	648,209
Orleans	13,242,625	2,669,823	736,589	930,639	5,191,041	112,125	404,687	647,844
Oswego	37,933,827	11,154,096	2,106,364	1,808,978	12,565,081	255,817	931,357	1,075,884
Otsego	19,821,731	4,199,760	1,553,967	469,320	9,131,042	394,320	225,653	337,888
Putnam	22,074,596	4,511,235	1,025,167	1,373,307	9,572,521	1,659,488	868,004	630,666
Rensselaer	64,674,276	11,338,694	4,384,761	3,232,480	29,828,967	2,539,680	2,225,535	1,006,769
Rockland	124,909,698	26,799,115	13,886,782	2,229,803	48,610,700	6,950,041	9,226,417	1,603,021
St. Lawrence	40,141,637	9,335,740	2,984,396	1,137,079	13,451,362	754,593	1,902,322	1,195,584
Saratoga	45,877,057	7,824,363	1,342,762	2,621,100	22,591,011	2,010,248	1,306,376	918,980
Schenectady	69,321,946	14,208,051	4,255,351	4,671,645	27,777,641	1,700,640	3,951,134	3,222,019
Schoharie	9,928,111	2,442,763	839,634	652,173	3,291,898	215,860	327,735	320,417
Schuyler	8,777,795	1,555,369	524,786	534,611	4,012,910	393,564	0	76,895
Seneca	9,311,338	1,443,528	611,757	789,598	4,190,639	200,314	75,760	119,042
Steuben	34,229,233	8,345,033	2,324,343	918,326	13,816,659	796,171	249,801	661,308
Suffolk	525,646,523	128,936,953	22,187,542	27,081,152	187,889,691	21,090,023	58,056,612	6,223,062
Sullivan	39,571,846	11,482,054	1,749,700	2,477,451	13,135,965	2,430,229	1,798,704	478,833
Tioga	15,037,482	2,796,794	703,699	716,193	7,006,586	327,450	318,850	678,148
Tompkins	20,847,877	5,063,321	838,264	2,164,048	6,965,484	584,213	220,059	601,126
Ulster	69,485,541	15,435,653	3,130,438	4,347,533	24,893,770	2,885,358	7,782,505	330,460
Warren	18,602,423	3,251,212	886,401	900,540	8,358,302	265,487	390,293	665,422
Washington	20,365,346	3,994,420	1,133,971	814,217	8,454,271	1,245,253	444,674	488,535
Wayne	24,848,354	5,295,559	2,254,932	699,212	10,901,609	456,878	359,117	530,959
Westchester	531,501,666	128,833,698	40,484,775	18,401,641	166,601,624	22,646,522	88,343,667	4,736,048
Wyoming	10,845,501	1,736,432	543,984	396,164	5,690,490	235,778	173,112	171,675
Yates	7,584,957	1,891,755	743,194	360,524	2,926,909	(223)	52,201	131,231

Table E (Part II)  
 MEDICAL ASSISTANCE  
 Medical Assistance expenditures by major types of care  
 1991 SUMMARY

Drugs and Sickroom Supplies	Physicians	Dental	Transportation	Lab. and X-Ray	Family Planning	All Other	Social Services District
\$733,113,534	\$275,080,737	\$109,347,518	\$169,360,405	\$65,821,472	\$50,817,888	\$464,709,461	New York State
479,636,466	184,585,079	81,204,184	90,217,243	48,081,438	30,034,144	268,464,873	New York City
253,477,068	90,495,658	28,143,334	79,143,162	17,740,034	20,783,744	196,244,588	Rest of State
6,087,521	2,043,908	551,256	2,138,629	544,066	415,386	7,036,947	Albany
1,903,273	743,303	159,994	381,957	123,081	132,767	843,827	Allegany
5,441,889	2,316,489	630,224	773,470	424,572	301,612	2,150,306	Broome
2,718,520	1,418,084	306,560	656,706	234,068	132,124	1,102,976	Cattaraugus
2,209,244	1,225,919	361,971	341,940	205,766	206,444	1,071,014	Cayuga
4,579,071	2,110,787	547,856	942,377	329,537	287,882	2,377,594	Chautauque
3,402,862	1,202,936	378,576	191,648	294,167	482,740	1,999,865	Chemung
1,338,962	743,925	93,623	476,383	117,780	145,198	637,629	Chenango
2,989,051	1,244,068	252,543	164,702	221,799	187,284	870,240	Clinton
1,251,677	579,950	95,536	282,464	90,930	75,027	619,211	Columbia
1,421,263	661,980	180,943	436,725	105,836	275,557	1,124,252	Cortland
1,316,370	587,946	111,158	236,895	79,376	62,954	985,872	Delaware
4,140,904	1,646,960	398,855	1,805,754	290,264	520,266	3,254,417	Dutchess
31,989,007	9,686,766	3,659,023	7,604,470	2,302,347	2,045,185	23,282,458	Erie
1,434,072	522,447	125,492	127,387	89,066	84,379	496,731	Essex
2,084,270	841,404	121,434	355,162	116,648	72,595	1,084,030	Franklin
1,964,134	827,968	223,069	476,433	105,328	122,101	974,156	Fulton
1,176,111	585,196	127,931	238,986	68,920	84,559	1,199,579	Genesee
1,126,816	457,410	143,632	191,826	79,582	70,375	507,324	Greene
131,048	47,561	9,271	2,294	7,291	7,901	29,583	Hamilton
1,913,781	565,182	176,093	437,686	112,835	322,897	936,573	Herkimer
3,045,790	1,772,906	311,398	507,101	279,164	947,764	1,275,789	Jefferson
886,664	324,276	78,562	187,612	72,235	60,482	394,955	Lewis
1,234,553	458,919	115,662	209,747	85,714	132,624	608,076	Livingston
1,265,458	696,007	126,948	252,625	118,593	154,595	800,728	Madison
17,553,428	4,341,455	822,430	7,589,534	1,571,629	1,772,458	24,262,039	Monroe
1,931,313	871,685	201,787	480,463	113,281	147,969	885,395	Montgomery
19,283,030	3,694,162	2,086,171	9,864,663	672,805	867,168	20,684,024	Nassau
6,273,083	2,560,248	890,793	1,370,275	513,260	589,184	1,519,350	Niagara
8,170,931	2,978,298	1,024,726	1,756,963	561,191	1,826,298	3,929,218	Oneida
9,759,182	4,185,764	804,935	3,622,871	960,632	1,726,565	11,313,232	Onondaga
1,787,210	828,575	221,262	441,126	124,297	256,709	868,806	Ontario
7,152,248	3,243,395	1,363,096	2,976,693	517,051	361,803	5,702,158	Orange
1,076,121	466,254	55,947	144,116	111,132	89,864	606,443	Orleans
3,119,979	1,578,755	315,916	1,035,089	209,015	399,785	1,377,711	Oswego
1,439,605	603,323	179,434	296,657	67,999	110,052	812,711	Otsego
763,387	238,998	30,808	543,238	62,807	20,798	774,172	Putnam
3,553,372	1,209,007	358,916	1,205,382	250,594	246,430	3,293,689	Rensselaer
5,163,424	2,563,058	923,665	1,483,561	331,986	190,389	4,947,736	Rockland
4,166,955	1,956,405	425,318	468,208	310,321	316,574	1,736,780	St. Lawrence
3,113,932	1,161,024	256,566	407,801	225,520	139,868	1,957,506	Saratoga
3,758,538	1,172,611	153,134	782,363	258,270	272,021	3,138,528	Schenectady
876,498	244,785	105,192	139,051	49,841	97,284	324,980	Schoharie
681,536	299,402	66,747	169,260	47,567	41,107	374,041	Schuyler
743,643	292,598	77,646	198,533	36,320	115,876	416,084	Seneca
3,024,997	1,367,818	329,134	423,613	236,769	354,632	1,380,629	Steuben
25,081,423	7,799,637	3,723,724	11,915,155	1,243,672	1,179,550	23,238,327	Suffolk
2,394,371	911,283	270,306	610,217	146,860	116,134	1,569,739	Sullivan
1,069,065	496,218	129,054	191,494	102,813	63,185	437,933	Tioga
1,622,372	1,012,231	222,116	343,865	133,577	319,274	757,927	Tompkins
3,944,761	1,395,322	365,051	820,376	277,952	280,487	3,595,875	Ulster
1,631,526	569,484	123,685	100,636	83,583	88,869	1,286,983	Warren
1,608,545	371,449	198,241	257,143	93,395	105,080	1,156,152	Washington
1,935,235	648,487	201,167	319,669	122,600	223,920	899,010	Wayne
22,145,307	7,513,435	2,760,686	9,548,712	1,703,295	1,025,456	16,756,800	Westchester
876,742	348,512	88,876	165,337	56,458	38,842	323,099	Wyoming
722,998	259,683	79,195	50,119	44,577	69,415	253,379	Yates

Table F  
**SUPPLEMENTAL SECURITY INCOME**  
 Monthly average number of recipients, total annual program expenditures and  
 federal and state shares, by social services district  
 1991 SUMMARY

Social Services District	Recipients	Expenditures		
		Total	Federal	State
New York State*	428,697	1,750,005,805	1,331,777,244	418,228,561
New York City	259,925	1,109,986,843	882,092,407	227,894,436
Rest of State	157,047	610,308,153	434,155,357	176,152,796
Albany	4,099	16,110,062	11,080,276	5,029,786
Allegany	1,007	3,890,892	2,899,572	991,320
Broome	3,244	11,777,544	8,429,889	3,347,655
Cattaraugus	1,615	5,862,136	4,230,282	1,631,854
Cayuga	1,242	4,612,514	2,986,647	1,625,867
Chautauqua	2,797	10,963,196	7,882,010	3,081,186
Chemung	1,939	7,469,590	5,553,480	1,916,110
Chenango	833	2,681,039	1,968,208	712,831
Clinton	1,706	6,102,297	4,538,745	1,563,552
Columbia	1,117	4,277,040	2,856,010	1,421,030
Cortland	868	3,329,694	2,301,205	1,028,489
Delaware	990	3,522,391	2,470,390	1,052,001
Dutchess	3,210	12,686,510	7,893,510	4,793,000
Erie	18,360	74,492,078	56,002,860	18,489,218
Essex	723	2,481,794	1,593,991	887,803
Franklin	1,227	4,074,537	2,867,852	1,206,685
Fulton	1,207	4,058,860	2,673,358	1,385,502
Genesee	770	2,680,039	1,891,597	788,442
Greene	737	2,588,228	1,849,275	738,953
Hamilton	70	194,403	142,450	51,953
Herkimer	1,209	4,338,764	3,095,764	1,243,000
Jefferson	2,065	7,674,299	5,593,152	2,081,147
Lewis	514	1,977,297	1,332,948	644,349
Livingston	694	2,462,036	1,799,990	662,046
Madison	920	3,317,213	2,332,541	984,672
Monroe	11,481	47,885,748	34,627,069	13,258,679
Montgomery	1,119	3,833,709	2,645,538	1,188,171
Nassau	12,852	50,554,233	35,496,435	15,057,798
Niagara	3,366	13,035,946	8,980,520	4,055,426
Oneida	5,365	20,610,161	15,074,805	5,535,356
Onondaga	7,248	28,051,422	21,101,406	6,950,016
Ontario	1,080	3,904,478	2,761,620	1,142,858
Orange	3,990	14,646,042	10,750,620	3,895,422
Orleans	657	2,431,720	1,852,822	578,898
Oswego	1,791	6,651,558	4,841,844	1,809,714
Otsego	1,055	3,801,016	2,537,874	1,263,142
Putnam	505	1,947,075	1,235,657	711,418
Rensselaer	2,216	8,418,858	5,887,776	2,531,082
Rockland	3,608	15,171,935	9,455,204	5,716,731
St. Lawrence	2,622	9,442,478	7,252,560	2,189,918
Saratoga	1,674	5,881,001	4,169,922	1,711,079
Schenectady	2,381	9,064,381	6,512,258	2,552,123
Schoharie	547	2,039,638	1,267,320	772,318
Schuyler	346	1,242,061	786,809	455,252
Seneca	437	1,620,114	1,070,450	549,664
Steuben	1,982	7,283,340	5,336,899	1,946,441
Suffolk	15,788	66,434,280	45,498,977	20,935,303
Sullivan	1,959	8,220,592	4,955,000	3,265,592
Tioga	589	2,130,959	1,624,951	506,008
Tompkins	1,009	3,901,472	2,744,362	1,157,110
Ulster	2,842	10,956,727	7,807,863	3,148,864
Warren	1,051	3,489,282	2,521,943	967,339
Washington	1,028	3,759,069	2,662,293	1,096,776
Wayne	1,393	4,844,258	3,464,569	1,379,689
Westchester	11,110	42,840,410	31,146,761	11,693,649
Wyoming	479	1,515,595	1,066,370	449,225
Yates	314	1,074,142	750,858	323,284
Mental Hygiene	11,725	29,710,809	15,529,480	14,181,329

\* Only NYS includes Mental Hygiene



Table G1

## SUPPLEMENTAL SECURITY INCOME

Monthly average number of SSI recipients  
by living arrangement and location

1991 SUMMARY

Living Arrangement	New York State	New York City	Rest of State	Mental Hygiene
Living Alone	225,913	147,938	77,950	25
Living with Others	123,261	77,796	45,447	18
Living in Household of Another	29,796	18,660	11,131	5
Congregate Care Level I	6,635	774	728	5,133
Congregate Care Level II	29,749	10,971	18,765	13
Congregate Care Level III	720	257	463	0
Title XIX Institution	19,014	7,066	5,313	6,635
Total	435,088	263,462	159,797	11,829
Adjustments *	(6,391)			
Adjusted Total	428,697			

Table G2

## SUPPLEMENTAL SECURITY INCOME

Monthly average number of SSI recipients  
by living arrangement and category of assistance

1991 SUMMARY

Living Arrangement	Total	Category of Assistance		
		Aged	Blind	Disabled
Living Alone	225,913	83,777	2,050	140,086
Living with Others	123,261	16,190	1,447	105,624
Living in Household of Another	29,796	12,622	288	16,886
Congregate Care Level I	6,635	821	37	5,777
Congregate Care Level II	29,750	6,996	159	22,595
Congregate Care Level III	720	1	3	716
Title XIX Institution	19,013	5,132	134	13,747
Total	435,088	125,539	4,118	305,431
Adjustments *	(6,391)			
Adjusted Total	428,697			

\* Adjustments represent the net change in caseload made during the month but effective in prior periods.

Table H  
EMERGENCY PROGRAMS  
Monthly average number of cases and recipients receiving assistance and  
total expenditures in the EAF and EAA programs, by social service district  
1991 SUMMARY

Social Services District	Emergency Assistance to Families			Emergency Assistance to Adults	
	Monthly Average		Quarterly	Monthly Average	Quarterly
	Families	Recipients	Expenditures	Cases/Recipients	Expenditures
New York State	NA	NA	\$93,162,731	NA	\$6,039,402
New York City	NA	NA	75,188,900	NA	1,899,649
Rest of State	NA	NA	17,973,831	1,158	4,139,753
Albany	36	117	214,936	34	142,527
Allegany	10	36	43,111	9	30,608
Broome	24	85	98,160	14	31,085
Cattaraugus	17	67	62,512	7	13,853
Cayuga	16	66	72,098	1	3,210
Chautauqua	33	122	93,141	5	14,968
Chemung	36	129	174,459	6	22,071
Chenango	6	23	23,410	0	92
Clinton	16	55	65,651	2	7,678
Columbia	7	23	28,216	1	6,318
Cortland	24	82	107,585	5	14,512
Delaware	19	68	90,335	6	14,090
Dutchess	48	117	321,660	11	50,891
Erie	NA	NA	893,339	145	448,643
Essex	4	17	16,550	2	5,929
Franklin	14	40	50,302	1	5,862
Fulton	10	35	53,921	3	11,413
Genesee	10	35	35,072	1	1,728
Greene	16	58	79,652	4	10,060
Hamilton	1	3	6,722	0	0
Herkimer	6	23	22,553	1	2,180
Jefferson	17	62	81,814	9	36,638
Lewis	7	24	21,231	0	397
Livingston	34	106	175,088	5	19,042
Madison	12	45	52,863	1	1,548
Monroe	162	527	896,389	210	662,723
Montgomery	20	73	82,268	3	10,844
Nassau	77	226	597,250	45	202,217
Niagara	54	188	234,314	10	27,591
Oneida	112	403	489,729	34	76,843
Onondaga	241	767	1,867,480	173	461,612
Ontario	23	77	104,448	5	21,453
Orange	23	87	264,376	21	113,177
Orleans	12	50	50,242	2	5,448
Oswego	25	96	106,648	3	9,743
Otsego	12	45	66,631	3	17,679
Putnam	6	20	77,991	2	15,846
Rensselaer	13	59	56,653	15	73,684
Rockland	19	61	354,658	13	39,202
St. Lawrence	19	74	76,947	8	20,709
Saratoga	47	163	227,735	5	14,519
Schenectady	63	197	334,596	13	66,932
Schoharie	19	64	166,176	2	6,513
Schuyler	5	14	17,157	0	5,442
Seneca	6	3	3,555	0	60
Steuben	19	66	84,361	2	5,894
Suffolk	339	1,107	3,063,783	220	729,160
Sullivan	7	27	38,408	5	11,505
Tioga	10	39	44,192	1	2,427
Tompkins	27	86	187,519	12	86,409
Ulster	7	25	41,798	5	19,356
Warren	14	51	75,618	2	10,473
Washington	18	63	94,921	2	29,918
Wayne	12	45	57,935	1	3,366
Westchester	891	2,602	5,271,484	65	482,546
Wyoming	4	14	19,264	0	1,055
Yates	9	34	34,924	3	10,064

N.A. Not available