



FAMILY INDEPENDENCE ADMINISTRATION

Seth W. Diamond, Executive Deputy Commissioner




James K. Whelan, Deputy Commissioner
Policy, Procedures, and Training

Lisa C. Fitzpatrick, Assistant Deputy Commissioner
Office of Procedures

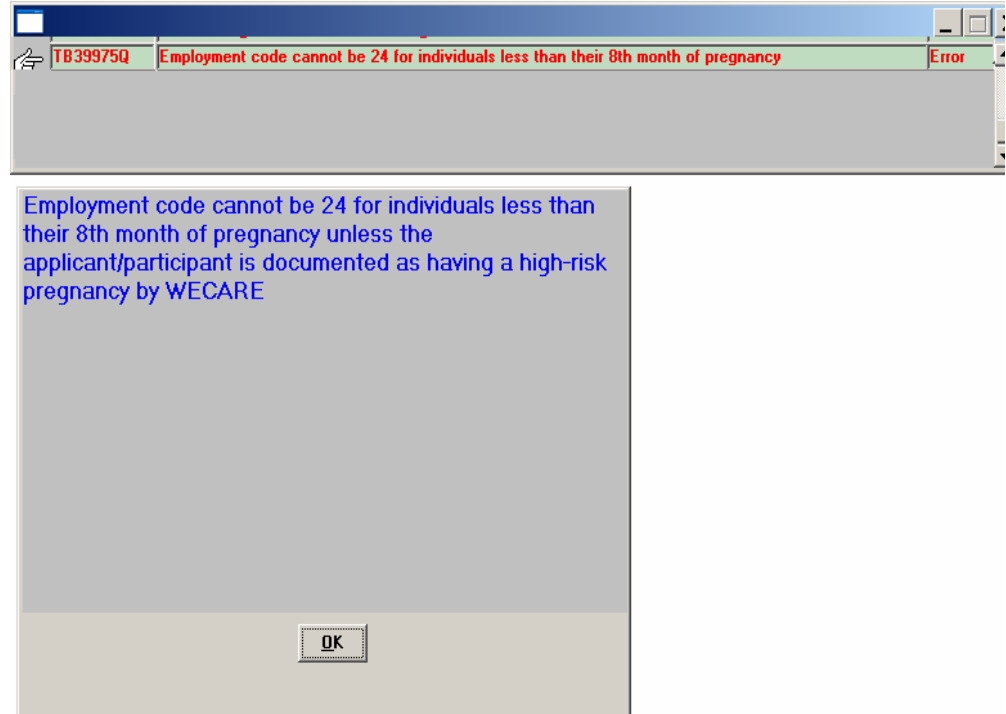
POLICY BULLETIN #09-135-SYS

USE OF THE APPROPRIATE EMPLOYMENT STATUS (ES) CODE FOR PREGNANT WOMEN

Date: December 16, 2009	Subtopic(s): Employment Status (ES) code 24
<p> This procedure can now be accessed on the FIAweb.</p>	<p>The purpose of this policy bulletin is to remind all Job Center staff when to use ES code 24 for pregnant women.</p> <p>ES code 20 should be used up until the eighth month of medically verified pregnancy.</p> <p>ES code 24 (Within 30 Days of Medically Verified Date of Delivery) is used for pregnant women 16 years of age and older who are in their eighth month of pregnancy.</p> <p>If the JOS/Worker inputs ES code 24 before the eighth month of pregnancy, the following POS error message will appear:</p>

HAVE QUESTIONS ABOUT THIS PROCEDURE?
Call 718-557-1313 then press 3 at the prompt followed by 1 or
send an e-mail to *FIA Call Center*

POS Error Message



High risk pregnancies

However, when WeCare verifies an applicant/participant as having a high risk pregnancy, a WeCare vendor enters Action Code **184P** in NYCWAY. This automatically changes the ES code **20** to ES code **24**.

Effective Immediately