



# OFFICE OF POLICY, PROCEDURES, AND TRAINING

## POLICY BULLETIN #23-46-OPE (This Policy Bulletin Replaces PB #19-21-OPE)

### MTA FARE INCREASE

Date: August 11, 2023	Subtopic(s): Carfare
<p>Revised</p> <p>See <a href="#">PB #09-74-OPE</a> for instructions on issuing one-way carfare for BEV appointments</p>	<p><b>Revision to the Original Policy Bulletin:</b></p> <p>This policy bulletin has been revised to inform Benefits Access Center (BAC) staff that effective August 20, 2023:</p> <ul style="list-style-type: none"> <li>• the Base Fare will increase to \$2.90;</li> <li>• the Single-Ride Ticket will increase to \$3.25;</li> <li>• the Weekly Unlimited Fare will increase to \$34; and</li> <li>• the Monthly Unlimited Fare has increased to \$132.</li> </ul> <p><b>Purpose</b></p> <p>The single-ride ticket (sold at MTA vending machines only) rate is \$3.25. The weekly and monthly MetroCard amounts are as follows:</p> <ul style="list-style-type: none"> <li>• \$34 for a weekly unlimited card</li> <li>• \$132 for a monthly unlimited card</li> </ul> <p><b>Note:</b> Excluding the unlimited MetroCards, BACs will issue carfare based on the \$2.90 Base Fare rate.</p> <p>Carfare can be issued for instances such as:</p> <ul style="list-style-type: none"> <li>• applicants complying with agency referrals to ancillary programs (e.g., Wellness, Comprehensive Assessment, Rehabilitation and Employment [WeCARE], and the Bureau of Eligibility Verification [BEV]) to meet eligibility requirements. <ul style="list-style-type: none"> <li>▪ for these appointments, carfare is issued through the Automated MetroCard Issuance System (AMIS). Refer to page 3.2 of the Disbursement section of the D&amp;C Manual for detailed instructions.</li> </ul> </li> </ul>

**HAVE QUESTIONS ABOUT THIS PROCEDURE?**

Request a Clearance in [Service NOW](#), or send an e-mail to [fiacallcenter2@dss.nyc.gov](mailto:fiacallcenter2@dss.nyc.gov), or Call 718-557-1313 then press 3 at the prompt followed by 1 or fax to: (917) 639-0298

Homeless individuals (Shelter Type Code **23**) are not eligible for apartment search carfare.

- homeless applicants sending and/or accompanying children to school, only when the applicant has been placed in temporary housing accommodations outside the five boroughs of New York City (e.g., in Long Island) and the child is attending school in one of the five boroughs and wishes to remain in the school district.

Issuance Code **29** is used for job search carfare.

- an applicant when they are referred to an employment related activity.

Revised

- a participant when they report to their assigned vendor until such time when the carfare is issued on a recurring basis via the Self-Sufficiency, Employment, Assessment and Management System (SEAMS). The benefit will appear on the Benefit Issuance (**NQCS5B**) screen in the Welfare Management System (WMS) as Special Grant Code **29** (Bi-Weekly Recurring WEP Carfare).

Revised

- applicants/participants residing in a Department of Homeless Services (DHS) shelter or a HRA Domestic Violence Shelter and searching for permanent housing (not to exceed three round trips per week [\$17.40/week]).

Avoid duplication of carfare allowances.

Before issuing apartment search carfare to homeless participants, the JOS/Worker must check the **NQCS5B** screen in WMS to ensure that the weekly job search and apartment search carfare allowances are not duplicated and together do not exceed the cost of a weekly unlimited MetroCard of \$34.

Revised

To determine if the participant is in receipt of job search carfare, check the **NQCS5B** screen for Special Grant Code **29**. If the participant is in receipt of job search carfare in an amount equal to a weekly unlimited MetroCard, no additional carfare needs to be issued. However, if the participant is only receiving pay per ride carfare for a concurrent assignment because the participant is working part-time, then their apartment search carfare must be reduced to the difference between the cost of a weekly unlimited MetroCard and the amount issued for job search expenses.

Example

Revised

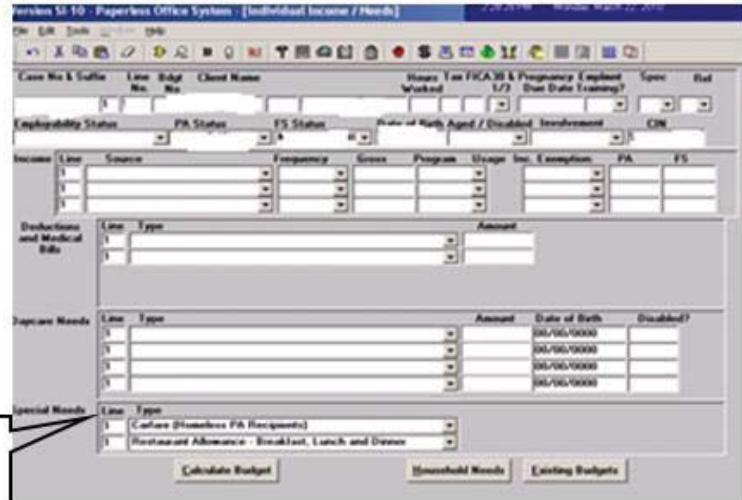
A homeless participant is currently engaged in a job search. They are receiving job search carfare in the amount of \$34 weekly. The cost for a weekly unlimited MetroCard is \$34. Therefore, they are not eligible for the apartment search carfare.

Apartment Search  
 Carfare is Special Needs  
 Type Code **25**.

Revised

**Individual  
 Income/Needs** screen.

To issue the carfare for an apartment search grant, the JOS/Worker must create and authorize a new WMS budget and enter Special Needs Type Code **25** Carfare (Homeless PA Recipients) in the **SPEC NDS: TY** field and the monthly amount (\$17.40 per week x 4.333 weeks per month = \$75.39) in the **SPEC NDS: AMT** field.



Revised

Although engagement carfare may start and stop on compliance issues and are issued on different cycles from apartment search carfare, individuals in homeless shelters cannot be issued duplicate carfare allowances, and together they cannot exceed the cost of a weekly unlimited MetroCard of \$34.

As is the case with shelter residents, carfare should only be issued in instances where the apartment search is monitored. JOS/Workers should therefore disallow apartment search carfare for homeless individuals (Shelter Type Code **23** [Undomiciled]). For Shelter Type **23** cases, the apartment search carfare allowances must be removed at recertification or at any other contact. For all other households, the JOS/Worker must remember to remove the apartment search carfare from the budget when the household moves into permanent housing, or when the household moves into other temporary housing where the apartment search is not monitored (i.e., non-DHS shelters, shared housing, etc.)

*Effective August 20, 2023*

**Reference:**

Temporary Assistance Source Book - Chapter 27, § A, Page 27-1

**Related Item:**

[PB #09-74-OPE](#)